

Hilco Industrial, LLC

# ONLINE AUCTION

*Machinery & equipment no longer needed in the continuing operations of*



## Die Casting Machinery & Support Equipment



**Online Bidding Begins: Monday, June 11<sup>th</sup> • 10AM**  
**Online Bidding Closes: Tuesday, June 19<sup>th</sup>**  
**Bedford Heights • OH**

*Sale being held in conjunction with*

**DIE CAST MACHINERY, LLC**

3246 West Monroe Street - Waukegan, IL 60085 - USA

1-847-360-9170

**Hilco Industrial, LLC**

Auctioneers • Liquidators • Appraisers

Ph 877-37-HILCO (44526) • Fx 248-254-9995

**www.hilcoind.com**

# HILCO INDUSTRIAL, LLC ONLINE AUCTION

Machinery & equipment no longer needed  
in the continuing operations of



## ONLINE BIDDING OPENS

**MONDAY, JUNE 11<sup>TH</sup>**  
**BEGINNING AT 10AM LOCAL TIME**

## ONLINE BIDDING CLOSES

**TUESDAY, JUNE 19<sup>TH</sup>**

PLEASE CHECK [WWW.HILCOIND.COM](http://WWW.HILCOIND.COM) FOR CLOSING TIMES

## PREVIEW DATE

**MONDAY, JUNE 11<sup>TH</sup>**  
**8:00 AM TO 4:00 PM**

TO SCHEDULE AN EARLIER INSPECTION, PLEASE CONTACT  
ED CERVAC AT 847-849-2935 OR EMAIL  
[ECERVAC@HILCOIND.COM](mailto:ECERVAC@HILCOIND.COM)

## ASSET LOCATION

**23901 AURORA RD.**  
**BEDFORD HEIGHTS, OH 44146**

## DIRECTIONS TO PREVIEW

From **Cleveland-Hopkins International Airport**: Exit airport and take the ramp to OH-237 N. Follow to I-480 E, continue to Exit 25A-25B-25C for Northfield Rd. Keep left at the fork and continue toward Mueti Dr. Take Exit 25C on the left for OH-8/OH-43/Northfield Rd. and merge onto Mueti Dr. Turn left on Bartlett Rd. and turn right onto Aurora Rd. Destination will be on the left.

## FURTHER INFORMATION

- An 18% buyer's premium will be charged on all assets. The buyer's premium will be reduced to 15% for payments made by cash, company check or wire transfer. Auction will be conducted in English, accepting U.S. currency only.
- Removal deadline will be posted on our website, with hours of removal between 8am to 4pm Monday thru Friday. Buyers with items left on site after deadline are subject to fines of \$500 per day.
- For further information on Machinery & Equipment, please contact Ed Cervac at 847-849-2935 or email [ecervac@hilcoind.com](mailto:ecervac@hilcoind.com)
- For Payments please contact Lesia Joseph at 616-732-1800 X19 or email [ljoseph@hilcoind.com](mailto:ljoseph@hilcoind.com) or Hilco Accounts Receivable at [hin\\_ar@hilcoind.com](mailto:hin_ar@hilcoind.com)
- For Customer Service, please contact Sandi Neely at 248-254-9999 X16 or email [sneely@hilcoind.com](mailto:sneely@hilcoind.com)



## **(20) HOT CHAMBER DIE CAST MACHINES**

- 1 - **TECHMIRE MODEL 44NT, 4X4 HOT CHAMBER ZINC DIE CAST MACHINE**, S/N 2000-44ZNT-849, with Technimire Controls
- 3 - **NATIONAL MODEL H-55ZXV VECTOR FORCELOCK, 64.8-TON HOT CHAMBER ZINC DIE CAST MACHINES**, S/N's 92-0104, 92-0110 and 92-0111 (1992), 12.25" Tie Bar Clearance, Each with Allen-Bradley SLC 5/03 SLC Control, Tie Bar Strain Gauges, Single Point Manual Die Height Adjustment, Hydraulic Bumper Plate Ejection, Auxiliary Hydraulic Core Circuit, Natural Gas-Fired Melting and Holding Furnaces, Under Mount Quench Tank, Incline Outfeed Conveyor, Roller Conveyors, Slide To Furnace Bath
- 1 - **KUX-WICKES MODEL BH-200, 200-TON HOT CHAMBER ZINC DIE CAST MACHINE**, S/N 1178, 18" Tie Bar Clearance, with Center and -4" Shot Positions,
- 1 - **KUX-WICKES MODEL BH-400, 400-TON HOT CHAMBER ZINC DIE CAST MACHINE**, S/N 1468, 24" Tie Bar Clearance, with Center Shot Position, Transfer Mechanism, Trim Press



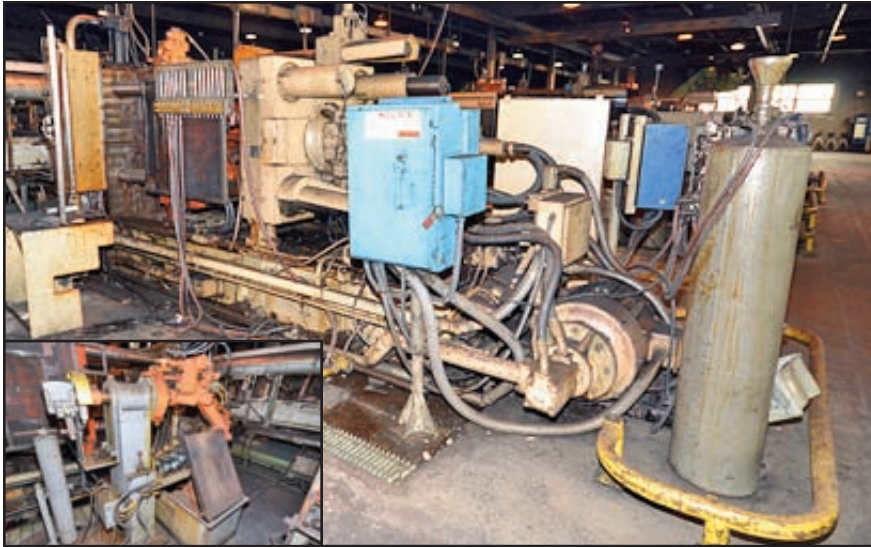
## (13 OF 20) HOT CHAMBER DIE CAST MACHINES



### (20) HOT CHAMBER DIE CAST MACHINES, CONTINUED

- 1 - B&T 500-TON HOT CHAMBER ZINC DIE CAST MACHINE, S/N N/A, 25-1/2" Tie Bar Clearance, with Center Shot Position, (2) Rotary Trim Knock-Off Degating Barrels
- 1 - KUX-WICKES MODEL BH-600, 600-TON HOT CHAMBER ZINC DIE CAST MACHINE, S/N 1379W (Rebuilt 2000); 28" Tie Bar Clearance; Allen-Bradley SLC 5/03 SLC, Upgraded Shot System, Robot, Trim Press
- 1 - KUX MODEL BH-600, 600-TON HOT CHAMBER ZINC DIE CAST MACHINE, S/N 1243W (Remanufactured 1992/1993), 28" Tie Bar Clearance, with Allen-Bradley PLC 5/20 PLC, Upgraded Shot System, Hydraulic Nozzle Clamping, Center Shot Position, Transfer Mechanism, Trim Press
- 3 - KUX MODEL HP-600, 600-TON HOT CHAMBER ZINC DIE CAST MACHINES, S/N's 1249W, 1250W and 1251W (Remanufactured 1992), 28" Tie Bar Clearance, with Allen-Bradley PLC 5/20 PLC and PanelView, Hydraulic Nozzle Clamping, Center and -6" Shot Position
- 1 - B&T MODEL 600-A, 600-TON HOT CHAMBER ZINC DIE CAST MACHINE, S/N 7019 (Rebuilt 1993), 29" Tie Bar Clearance, with Allen-Bradley PLC 5/20 PLC; Upgraded Shot System, Hydraulic Nozzle Clamping, Center and -6" Shot Position, Overton Engine Model Gamma Transfer, Trim Press

# (7 OF 20) HOT CHAMBER DIE CAST MACHINES, CONTINUED

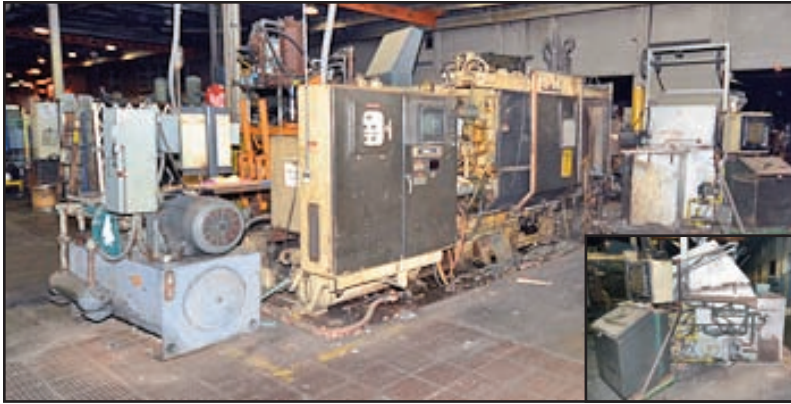


## (20) HOT CHAMBER DIE CAST MACHINES, CONT.

- 1 - B&T MODEL 600-Z, 600-TON HOT CHAMBER ZINC DIE CAST MACHINE, S/N N/A (Remanufactured 1993), 29" Tie Bar Clearance, with Allen-Bradley PLC 5/20 PLC, Upgraded Shot System, Hydraulic Nozzle Clamping, Center Shot Position, Transfer Mechanism, Trim Press
- 1 - B&T GREENLEE 600-TON HOT CHAMBER ZINC DIE CAST MACHINE, S/N 7018, 29" Tie Bar Clearance, with Allen-Bradley SLC 5/03 SLC Control and PanelView 550, Upgraded Shot System, Hydraulic Nozzle Clamping, Center and -6" Shot Position, QPC Oil Temperature Controller, Transfer Mechanism
- 1 - HPM CAST-MASTER MODEL D-600-Z, 600-TON HOT CHAMBER ZINC DIE CAST MACHINE, S/N N/A, 28" Tie Bar Clearance, with Allen-Bradley SLC 5/03 SLC Controls and PanelView 550, Upgraded Shot System, Hydraulic Nozzle Clamping System, Center Shot Position, Unimate Robot, Trim Press, Rotary Trim Knock-Off Barrel
- 1 - HPM MODEL D-600-Z, 600-TON HOT CHAMBER ZINC DIE CAST MACHINE, S/N N/A (Remanufactured 1993), 28" Tie Bar Clearance, with Allen-Bradley PLC 5/20 PLC and PanelView 1000, Upgraded Shot System, Hydraulic Nozzle Clamping, Center and -9" Shot Position
- 1 - HPM MODEL D-600-Z, 600-TON HOT CHAMBER ZINC DIE CAST MACHINE, S/N 67-22 (Remanufactured 1992/1993), 28" Tie Bar Clearance, with Allen-Bradley PLC 5/20 PLC and PanelView, Upgraded Shot System, Hydraulic Nozzle Clamping, Center Shot Position, Unimate Robot
- 1 - HPM MODEL D-600-Z, 600-TON HOT CHAMBER ZINC DIE CAST MACHINE, S/N 64-126 (Remanufactured 1993), 28" Tie Bar Clearance, with Allen-Bradley PLC 5/20 PLC, Upgraded Shot System, Hydraulic Nozzle Clamping, Center Shot Position, Transfer Mechanism, Trim Press
- 1 - ALPHA MODEL 600-Z, 600-TON HOT CHAMBER ZINC DIE CAST MACHINE, S/N 1680 (Remanufactured 1993), 29" Tie Bar Clearance, with Allen-Bradley PLC 5/20 PLC, Upgraded Shot System, Hydraulic Nozzle Clamping, Center Shot Position, Unimate Robot, Transfer Mechanism, (2) Trim Presses



# COLD CHAMBER DIE CAST MACHINES • FURNACES • TRIM PRESSES



## COLD CHAMBER DIE CAST MACHINES

- 1 – HPM MODEL II-600-A, 600-TON COLD CHAMBER DIE CAST MACHINE, S/N 85301 (1986), 29" Tie Bar Clearance, with Barber Coleman PLC, Center and -6" Shot Position, Auxiliary Hydraulic Core Circuit, Rimrock Model 205 Ladle and Model 310 Sprayer Reciprocator, Unimate Robot, Trim Press, Kemp Melting and Holding Furnace
- 1 – B&T 650-TON COLD CHAMBER DIE CAST MACHINE, S/N N/A, 32" Tie Bar Clearance, with Center Shot Position, Olmstead Shot and Die Close Valves, Piggyback Intensification System, Auxiliary Hydraulic Core Circuit, Unimate Robot, Thermocast Oil Temperature Controller, (Does Not Include Rimrock Model 305 Ladle)
- 1 – B&T 650-TON COLD CHAMBER DIE CAST MACHINE, S/N 7226, 32" Tie Bar Clearance, with Center Shot Position, Olmstead Shot and Die Close Valves, Piggyback Intensification System, Auxiliary Hydraulic Core Circuit, Unimate Robot, Trim Press, QPC Oil Temperature Controller, Gasmac Melting and Holding Furnace

## MOLTEN ZINC DISTRIBUTION SYSTEM

- 1 – KOZMA ZINC IMMERSION TUBE LAUNDER SYSTEM, with (1) 9-Tube Melt Furnace, (1) 7-Tube Melt Furnace, Approx. 220' of Distribution Trough

## FURNACES

- 1 – LINDBERG/MPH MODEL 62-GMH-4100 HOLDING FURNACE, S/N R-8178 (2001), 4,100-Lbs., 1,000,000-BTU, 1500°F Max., with Controls
- 8 – MISCELLANEOUS MELTING AND HOLDING FURNACES

## TRIM PRESSES

- 1 – METAL MECHANICS 30-TON VERTICAL TRIM PRESS, S/N 2636 (2003), 12" Stroke, 26" Daylight, 41" x 25" Between Tie Bars
- 1 – SAVAGE 30-TON VERTICAL TRIM PRESS, S/N 960; 16" Stroke, 30" Daylight, 37" x 20" Between Tie Bars
- 1 – HANNIFIN 25-TON VERTICAL TRIM PRESS, S/N F-88635-1
- 1 – METAL MECHANICS 10-TON VERTICAL TRIM PRESS, S/N 1953 (1995), 14" Stroke, 24" Daylight, 28" x 18" Between Tie Bars
- 5 – MISCELLANEOUS TRIM PRESSES

## MISCELLANEOUS DIE CAST

- 2 – RIMROCK MODEL 305 LADLES, with Triangle Controls
- 2 – AEC GLACIER SERIES CHILLER
- 1 – UNIMATE 5-AXIS PICK-AND-PLACE ROBOT
- CUSTOM DESIGNED TRANSFER MECHANISMS





## STAMPING PRESS

- 1 - **MINSTER MODEL #6, 60-TON OBI PRESS**, S/N 21194, Stroke 5", Shut Height 13", Adjustment 3", 90-SPM, Bed 32" x 21", Air Clutch, Autoset 1500 Plus Load Analyzer
- 2 - **LITTELL 600-LB. MOTORIZED UNCOILERS**; (1) Double-End

## CNC MACHINE TOOLS

- 1 - **CINCINNATI-MILACRON MODEL AVENGER 250T CNC TURNING CENTER**, S/N 3650 D0297-0009 (1997), Acramatic 2100 Control, 12-Position Turret, 10" Chuck, Spindle Bore 3.15", 20-HP
- 1 - **CINCINNATI-MILACRON MODEL ARROW 500 VERTICAL MACHINING CENTER**, S/N 7042 A00 96 1208 (1996), Acramatic A2100 Control, 60-8000 RPM, CAT#40 Taper, 21-Position ATC, Table 520mm x 700mm, X-Y-Z Travels 510mm, 10-HP (Spindle Rebuilt In 2011)
- 2 - **BRIDGEPORT MODEL V2XT, 3-AXIS CNC VERTICAL MILLS**, S/N XT-063 & XT-276, 2-HP, 9" x 42" Table

## MACHINE TOOLS

- 1 - **COLCHESTER 17" x 80" ENGINE LATHE**, S/N 7/0220/13496, 3" HIS, 20-1600 RPM, Inch & Metric Threading, Taper Attachment, 12" 3-Jaw Chuck, 10 HP
- 1 - **SUPERMAX MODEL LE 1338, 13" X 38" ENGINE LATHE**, S/N 17901-004, 1.25" HIS, 35-2000 RPM, Inch & Metric Threading, Taper Attachment, 6" 3-Jaw Chuck
- 1 - **SOUTH BEND MODEL CL81450, 12" X 48" ENGINE LATHE**, 1.5" HIS, Taper Attachment, 10" 3-Jaw Chuck
- 2 - **MICROCUT MODEL 1050, 3-HP VERTICAL MILLS**, 60-4200 RPM, 10" x 50" Table, 3-Axis Power Feeds, 2-Axis DRO
- 2 - **BRIDGEPORT 1-HP VERTICAL MILLS**, 80-2720 RPM, 9" x 36" Table
- 1 - **BRIDGEPORT 1/2-HP VERTICAL MILL**, S/N 24448, 9" x 36" Table
- 1 - **SUPERMAX MODEL YCM, 5-HP HORIZONTAL/VERTICAL MILL**, S/N 021414, 85-3800 RPM, 11" x 51" Table, 3-Axis DRO
- 1 - **VAN NORMAN 5-HP HORIZONTAL/VERTICAL MILL**, S/N 36-5263, 50-1500 RPM, 13" x 58" Table
- 1 - **Ooya MODEL RE-1225H, 4' X 12" RADIAL ARM DRILL**, S/N 0A7-3820, 38-1985 RPM, 26" x 18" x 16" Box Table
- 1 - **WALKER TURNER 4-SPINDLE GANG DRILL**, 10" Throat, 16" Centers, 17" x 69" Table
- 1 - **LELAND GIFFORD DRILL PRESS**, 13" Throat, 25.5" x 37" Table
- 1 - **WALKER TURNER DRILL PRESS**, S/N 11 2021, 10" Throat, 15" x 18" Table
- 1 - **DELTA DRILL PRESS**, S/N 11D 00245, 10" Throat, 14" x 18" Table
- 1 - **CHAMPION MODEL M-1601-A DRILL PRESS**, S/N 11D 00245, 500-3100 RPM, 6" Throat, 12" Diameter Table
- 2 - **SPEEDYCUT MODEL ST-0 5/16" VERTICAL TAPPING MACHINES**, 1.125" Stroke, 4.5" Throat, 80 SPM (Max.)



## GRINDERS

- 1 - CHEVALIER MODEL FSG-1020AD HYDRAULIC SURFACE GRINDER, S/N E182A004, 10" x 20" Electro-Magnetic Chuck, Dresser, Coolant
- 1 - HYDRABRASIVE MODEL 1218 HYDRAULIC SURFACE GRINDER, S/N 1218-81-HC, 8" x 20" Magnetic Chuck, Coolant
- 1 - BOYAR SCHULTZ MODEL 2A HYDRAULIC SURFACE GRINDER, S/N 818-20723-2A, 8" x 18" Electro-Magnetic Chuck, Coolant
- 1 - BROWN & SHARPE MODEL 2L, 6" X 18" SURFACE GRINDER, S/N 523-2-1180
- 1 - MAKINO MODEL C-40 TOOL & CUTTER GRINDER, S/N E49-6625, 1/2-HP Work Head, 3/4-HP Wheel Head
- 1 - HYBCO MODEL 1100 TAP GRINDER, S/N 7310
- 1 - FRIEDRICH DECKEL MODEL SO TOOL & CUTTER GRINDER, S/N 83124
- 1 - LISLE MODEL 91000 DRILL GRINDER

## ELECTRICAL DISCHARGE MACHINES

- 1 - SODICK MODEL CNC-1WH WIRE EDM, S/N 071, GW-40 Control & Power Supply
- 1 - HANSVEDT MODEL TRADESMAN RAM-TYPE EDM, Pulse 201 Power Supply, SM-155 Booster Module, 3-Axis DRO, 12" x 20" Table, 6" x 18" Magnetic Chuck
- 1 - EX-CELL-O RAM-TYPE EDM, S/N 2220108, XLO LECTRA-FORM Power Supply, 3-Axis DRO, 16" x 36" Table
- 1 - WESTHOFF MODEL VFM-1000 PRECISION EDM DRILL, S/N 961531

## FINISHING

- 1 - SWECO VIBRATORY FINISHING CELL INCLUDING: (1) Model FMD24LR 24-Cu. Ft. And (1) 10-Cu. Ft. Vibratory Finishers, S/N's 74292 & 892-S-01, With Exhaust Hoods, 24" x 60" Shaker Conveyor
- 2 - VIBRA FINISH VIBRATORY FINISHING CELLS, EACH WITH: (1) Model VF24B 24-Cu. Ft. And (1) Model VF10D 10-Cu. Ft. Vibratory Finishers, S/N's 24588, 24587, 10590 & 10589, With Exhaust Hoods, 30" x 60" CVC Shaker Conveyor
- 1 - VIBRA FINISH MODEL VF-24B VIBRATORY FINISHER, S/N 24587 (No Controls)
- 1 - ZERO BLAST MODEL BNP-65 BLAST CABINET, S/N 30002, 36" x 35" x 37"H Chamber
- 1 - 8" BELT GRINDER, Table 11" x 24"



## HYDRAULIC PRESSES & BROACHES

- 1 - DAKE MODEL 75H H-FRAME SHOP PRESS, S/N 182336, 75-Ton, 44" Between Housings
- 1 - KR WILSON MODEL #37 H-FRAME SHOP PRESS, S/N 2002, 50-Ton, 24" Between Housings
- 1 - BLACKHAWK H-FRAME SHOP PRESS, S/N B369766, 52" Between Housings
- 2 - DENISON 8-TON HYDRAULIC GAP FRAME PRESSES, 14" x 22" Bed
- 1 - HYDRAULIC GAP FRAME PRESS, 20" Stroke (Approx.), 17" x 22" Bed, 15-HP
- 1 - HANNIFIN HYDRAULIC GAP FRAME PRESS, 20" Stroke (Approx.), 17" x 22" Bed
- 1 - AMERICAN MODEL V-1 1/2 - 4 HYDRAULIC BROACH, S/N 3579, 4-Ton, 20" Stroke (Approx.), 15.5" x 10" Bed

## SHEAR & SAWS

- 1 - ROPER WHITNEY PEXTO MODEL 10-H-86, 5' x 10-GA. HYDRAULIC SHEAR, S/N 122-10-86, 36" Back Gauge, 36" Squaring Arm
- 1 - GROB MODEL 1624 VERTICAL BAND SAW, S/N 522, Blade Welder, 24" Throat, 24" x 28" Table
- 1 - KALAMAZOO 8" x 16" HORIZONTAL BAND SAW
- 1 - 10" MANUAL ABRASIVE CHOP SAW

## ASSEMBLY MACHINES & ACCESSORIES

- 21 – BODINE MODEL #42 DIAL-TYPE DRILLING/TAPPING & INSERTION MACHINES
- 6 – BODINE MODEL #48 DIAL-TYPE DRILLING/TAPPING & INSERTION MACHINES
- 2 – KAUFMAN DIAL-TYPE TAPPING MACHINES
- 5 – MOORFEED VIBRATORY BOWL FEEDERS, Models 72403; 72103; 72104; 71504; 15" to 24"
- 2 – PART SEPARATORS: (1) 28" Diameter with Bin Stand and Vibrating Shoot; (1) 16" Diameter
- 1 – AUTOMATION DEVICES 17" DIAMETER VIBRATORY BOWL FEEDER
- 1 – HENDRICKS 18" DIAMETER VIBRATORY BOWL FEEDER

## LIFT TRUCKS & MAN LIFTS

- 1 – YALE MODEL L83F-120-SB8-101, 10,000-LB. LP GAS LIFT TRUCK, S/N P204503, Cushion Tire, Lift Height 177"
- 1 – YALE MODEL K51T60, 6,000-LB. ELECTRIC LIFT TRUCK, S/N 532188, Cushion Tire, Boom Attachment, 2-Stage Mast
- 1 – CLARK MODEL ECA27, 4,600-LB. ELECTRIC LIFT TRUCK, S/N E138-0003-5677FA, Cushion Tire, Lift Height 188", Side Shift
- 1 – BAKER MODEL C1831-2098, 4,000-LB. ELECTRIC LIFT TRUCK, S/N 67155, Cushion Tire, Single Stage Mast
- 1 – CLARK MODEL ECA20, 3,375-LB. ELECTRIC LIFT TRUCK, S/N E138-0066-4511FA, Cushion Tire, Lift Height 188", Side Shift
- 2 – BAKER MODEL K1820-1556, 3,000-LB. ELECTRIC LIFT TRUCK, Cushion Tire, 2-Stage Mast, Side Shift
- 2 – YALE MODEL K68C-020-G36S-090, 2,000-LB. ELECTRIC STAND-UP LIFT TRUCK, S/N P-200042 & P-203125, Cushion Tire, Lift Height 168"
- 1 – SKYJACK MODEL SJII 3220 ELECTRIC SCISSOR LIFT, S/N 60272, Lift Height 20', Capacity. 800-Lb.
- 1 – GROVE MODEL PM31DC ELECTRIC MAN LIFT, S/N 31 161 (1998), Lift Height 31', Capacity. 350-Lb.
- 1 – POWER BOSS MODEL TSS-82 RIDING-TYPE FLOOR SCRUBBER, S/N 7071064, LP Gas

## PLANT SUPPORT EQUIPMENT

- 1 – GARDNER-DENVER MODEL ELECTRA-SAVER 125-HP ROTARY SCREW AIR COMPRESSOR, S/N M65271, Auto Sentry ES Control, 100 PSIG
- 1 – INGERSOLL-RAND MODEL XLE 125-HP RECIPROCATING AIR COMPRESSOR, S/N JH3875, 100 PSI
- 1 – CETCO MODEL CE200GA WASTEWATER FILTER SYSTEM, S/N 9C2ASLJ183
- 1 – AAF MODEL OPTIFLOW 4RC16 PULSE-JET CARTRIDGE DUST COLLECTOR, S/N 99-2677, (16) Cartridges, 25 HP Blower
- 1 – LINDBERG MODEL 11-EC-152418-12 ELECTRIC OVEN, S/N 23506, 1250°F, 15" x 24" x 18" Chamber
- 17 – SELF DUMPING HOPPERS
- APPROX. (350) STACKABLE BINS, 32" x 36" x 18" High

## WELDERS & PLANT SUPPORT

- 4 – LINCOLN MODEL IDEALARC WELDERS, Models TM-400/400; TIG-300/300; SP250 and 250
  - 1 – HOBART MODEL R-300-S WELDER, S/N 79WS08647
- PRODUCTION & PLANT SUPPORT EQUIPMENT INCLUDING; Tooling, Die Carts, Perishable Tooling, Vises, Chucks, Index Heads, Rotary Tables, Micrometers, Shop Carts, Work Benches, Welding Tables, Hand Tools, Portable Stairs, Shop Fans, Power Vise With Pipe Dies, Assorted Steel & Racks, Double End Grinders & Buffers, Etc.

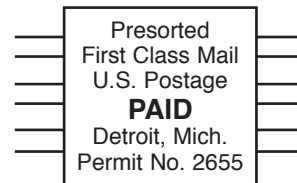


# Hilco Industrial, LLC

Auctioneers • Liquidators • Appraisers

## Headquarters

31555 W. Fourteen Mile Road, Suite 207  
Farmington Hills, MI 48334  
Ph: 877-37-HILCO (44526)  
Fx: 248.254.9995  
www.hilcoind.com



Forwarding Service Requested

# HILCO ONLINE AUCTION

Machinery & equipment no longer needed in the continuing operations of



## Die Casting Machinery & Support Equipment



**Online Bidding Begins: Monday, June 11<sup>th</sup> • 10AM**  
**Online Bidding Closes: Tuesday, June 19<sup>th</sup>**  
**Bedford Heights • OH**

### Terms of Sale

An 18% buyer's premium will be charged on all assets. The buyer's premium will be reduced to 15% for payments made by cash, company check or wire transfer. Everything will be sold to the highest bidder for cash, in accordance with the Auctioneer's customary "Terms of Sale", copies of which will be posted on the premises of the sale and subject to additional terms announced the day of sale. All items will be sold "as is, where-is" without any warranties, expressed or implied. Although obtained from sources deemed reliable, the Auctioneer makes no warranty or guarantee to the accuracy of the information herein contained. Bidders are encouraged to thoroughly inspect the items on which they intend to bid prior to sale. Absolutely no items will be removed until the day after the conclusion of the sale and payment is made in full. Subject to additions, deletions and prior sale.

**Payment:** ALL PURCHASES MUST BE PAID IN FULL ON THE DAY OF THE AUCTION. If you intend to pay by wire transfer, we will accept payment the day after the sale ONLY IF a deposit of 25% of total purchases is made on the day of the sale. Contact our office for wire transfer instructions. Only cash, wire transfer or certified check, payable to Hilco Industrial, LLC will be accepted. Company checks payable to Hilco Industrial, LLC will be accepted only if accompanied by a bank letter of guarantee, (see sample letter below). All sales are subject to sales tax. Purchasers claiming exemptions from taxes must provide proof satisfactory to the Auctioneer of their entitlement to claim such exemptions.

### Sample Bank Letter

(Bank Name) unconditionally guarantees payment to Hilco Industrial, LLC from (Company Name). This guarantee will be valid for purchases made at the Auction of Halex on June 11-19, 2012.

Follow Us on: [facebook](#) [twitter](#)

