



DIE CAST
MACHINERY
LLC

(847) 360-9170

World Leader in Used Die Casting Machinery!

HOME

RECENT
ADDITIONS

INDUSTRY
SERVICES

JOIN OUR
MAILING LIST

SELL US
YOUR MACHINE

If we can be of any assistance or if you have any questions,
please don't hesitate to contact us at (847) 360-9170.

You may also visit our website at
<https://www.diecastmachinery.com>

Thank you!

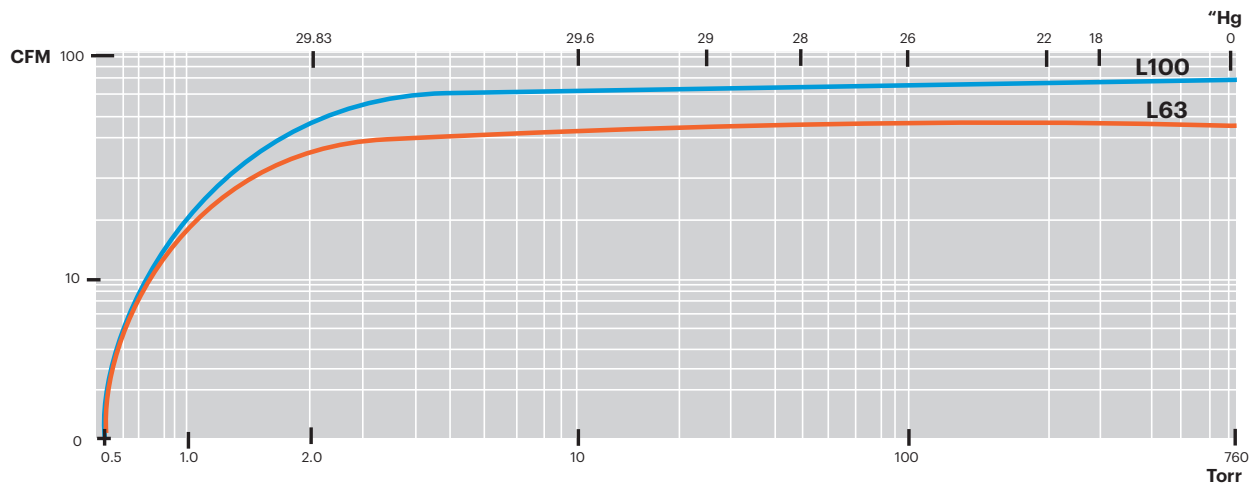
FEATURES

- o Composite vane material for long life
- o Oil level sight glass
- o Vibraton isolators
- o Anti-suck back valve
- o Integral exhaust filters
- o TEFC high-efficiency tri-voltage motor (208-230-460V 50/60)
- o Wire mesh inlet screen

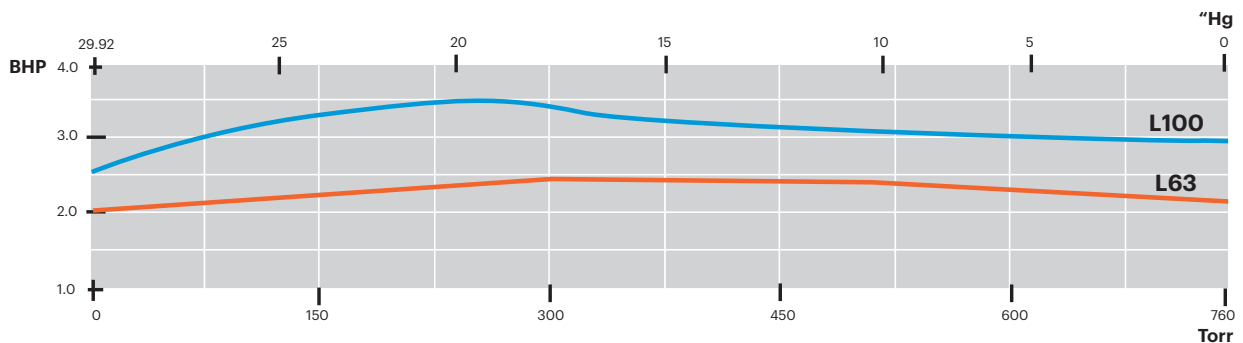


Airtech's L-Series rotary vane oil-flooded vacuum pump is a real workhorse. Reliability and durability are ensured by its simple design. Our L-Series Pump has integral exhaust filters, vibration isolators, and composite vane material which promotes longevity. The Airtech pump has an operating capacity range of 7-460 CFM while obtaining an end vacuum of 0.5 Torr.

PERFORMANCE CURVES



POWER CONSUMPTION



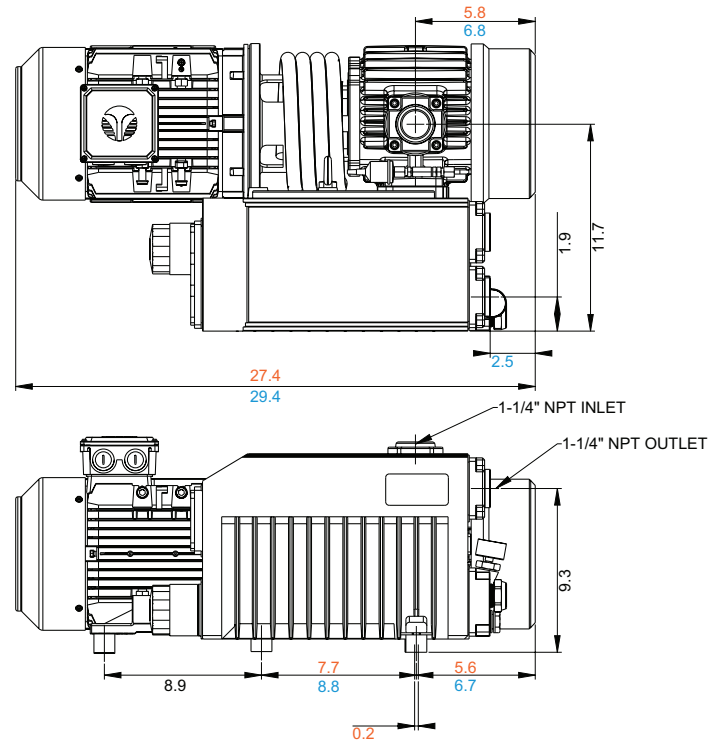
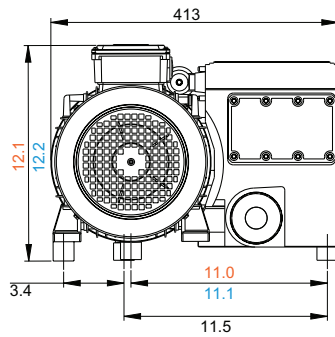
AIRTECH, INC.

RUTHERFORD, NJ 07070
WWW.AIRTECHUSA.COM
TEL: (888) 222-9940
FAX: (201) 569-1696

Specifications are subject to change without notice. Please contact factory for specification updates.

DIMENSIONS (INCHES)

L63
L100



PERFORMANCE DATA

Model	L63	L100
Free Air Displacement [CFM]	45	70
Motor Capacity (HP)	3.0	5.0
Speed (RPM)	1725	1725
Sound Level [dB (A)]	70	70
End Vacuum (Torr)	0.5	0.5
Weight with motor (lbs.)	175	185
Oil Quantity (Qts.)	2	2

AIRTECH, INC.

RUTHERFORD, NJ 07070
WWW.AIRTECHUSA.COM
TEL: (888) 222-9940
FAX: (201) 569-1696