

E.I. DUPONT DE NEMOURS

- NOTES:
- 1.) SEPERATE AC TERMINALS FROM DC TERMINALS
 - 2.) ALL CABLES/CONDUCTORS SHALL BE IDENTIFIED WITH PERMANENT TAGS MATCHING THE SCHEMATIC. NO HANDWRITTEN LABELS
 - 3.) WIRING: CONTROL WIRING (120 VAC) - 14# AWG. CU.
MOTOR LEADS MINIMUM - 12# AWG. CU.
SIGNAL CABLE - 16# TWSH.
 - 4.) FUSES TO BE BUSSMAN LPS CLASS RK1
 - 5.) ----- DUPONT WIRING
----- BUDZAR WIRING

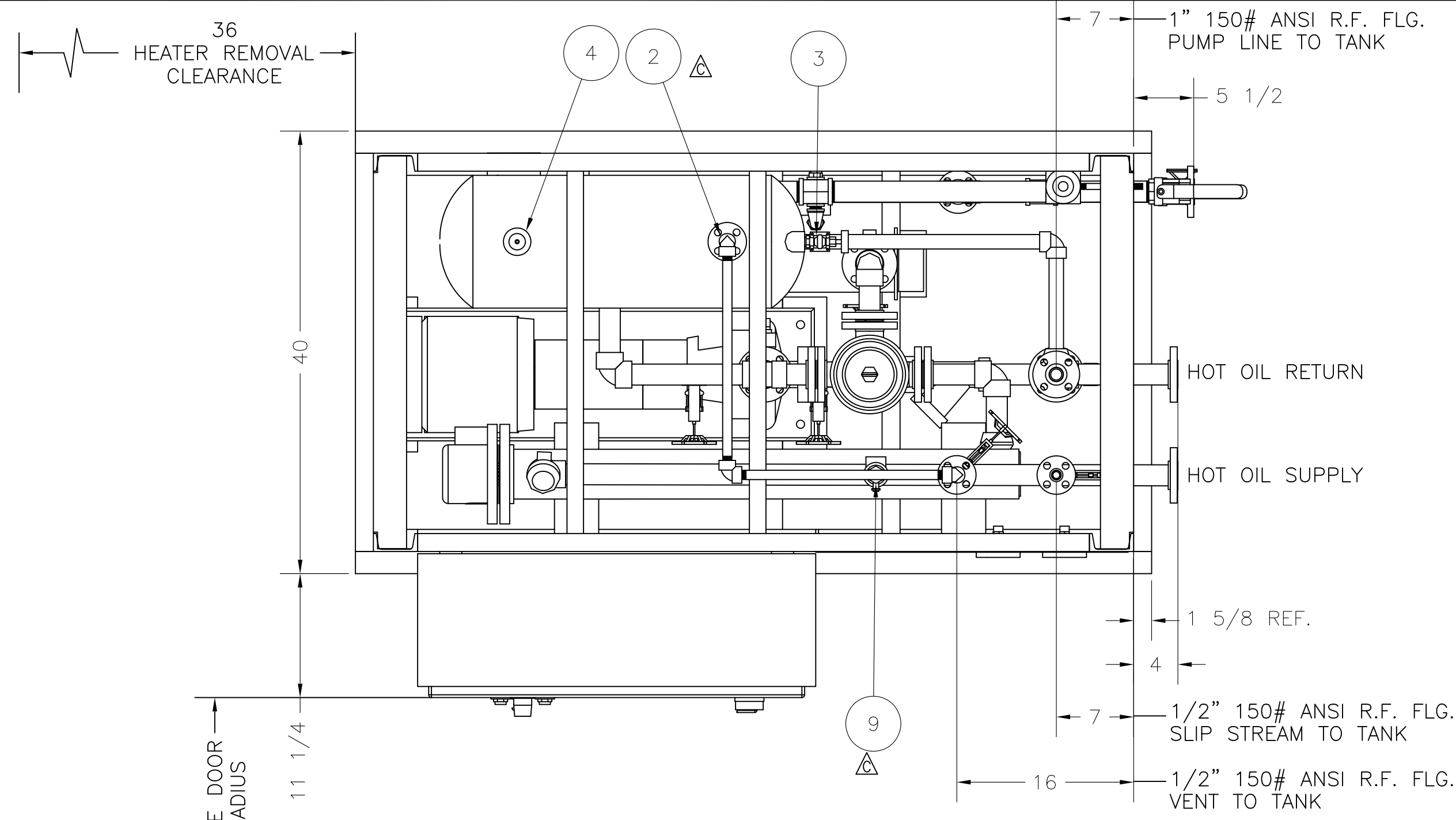
- 5.) 3-WAY VALVE FAILS TO COOLING
- 6.) PROVIDE 10% SPARE TERMINALS
- 7.) ⊕= INDICATES BUDZAR SUPPLIED TERMINAL BLOCK.

BUDZAR INDUSTRIES INC.
 PHONE: (440-918-0505) FAX: (440-918-0606) EMAIL: ENGINEERING@BUDZAR.COM

The information contained in this drawing, including the design and principles of construction disclosed, is the property of Budzar Industries, Incorporated and is confidential. All patent and design rights are reserved by Budzar Industries. This drawing, or the information contained herein, may not be reproduced in whole or in part, loaned, or otherwise communicated to any third party without the expressed written consent of Budzar Industries. Acceptance of this drawing will be construed as an agreement to the above.

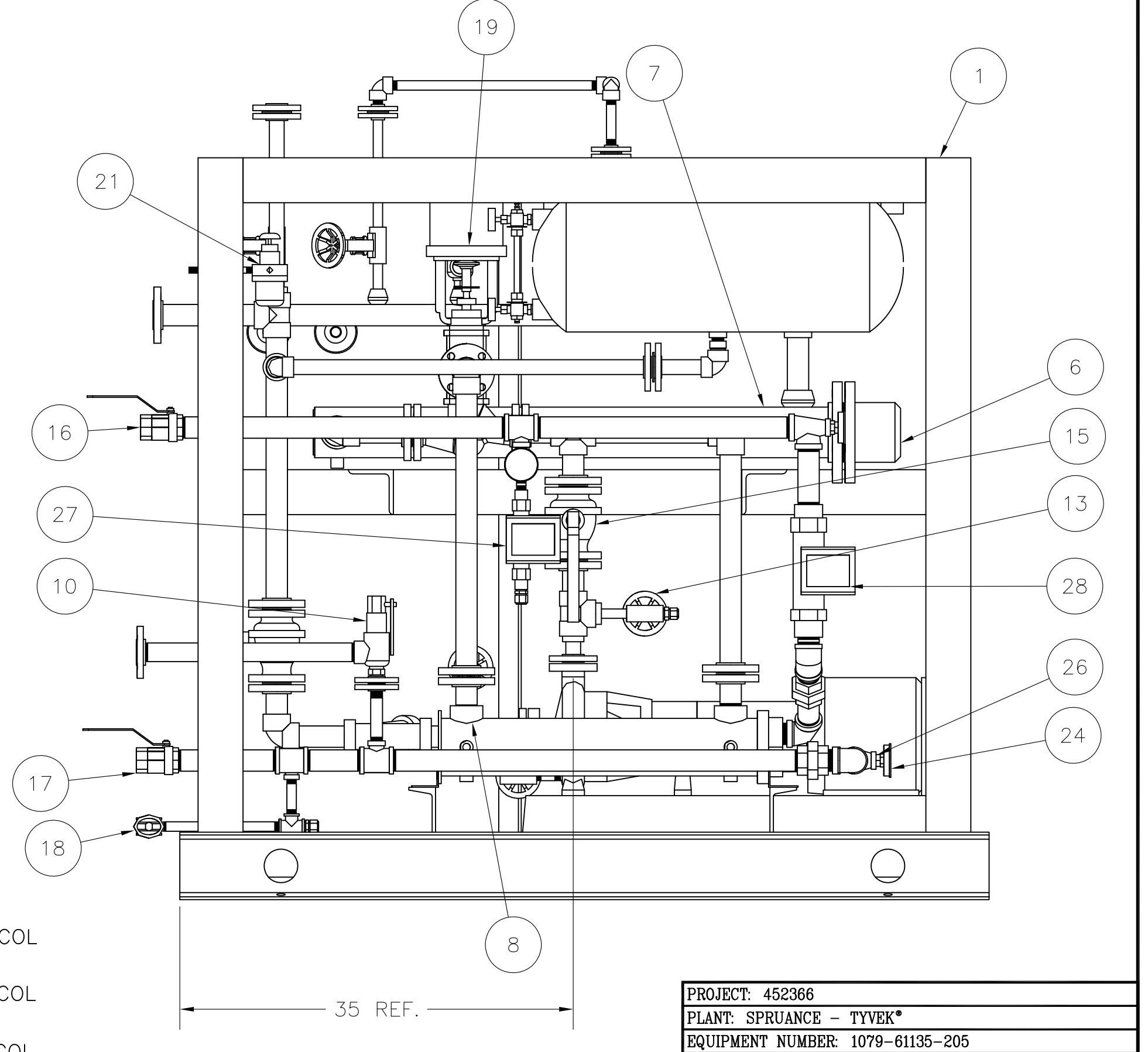
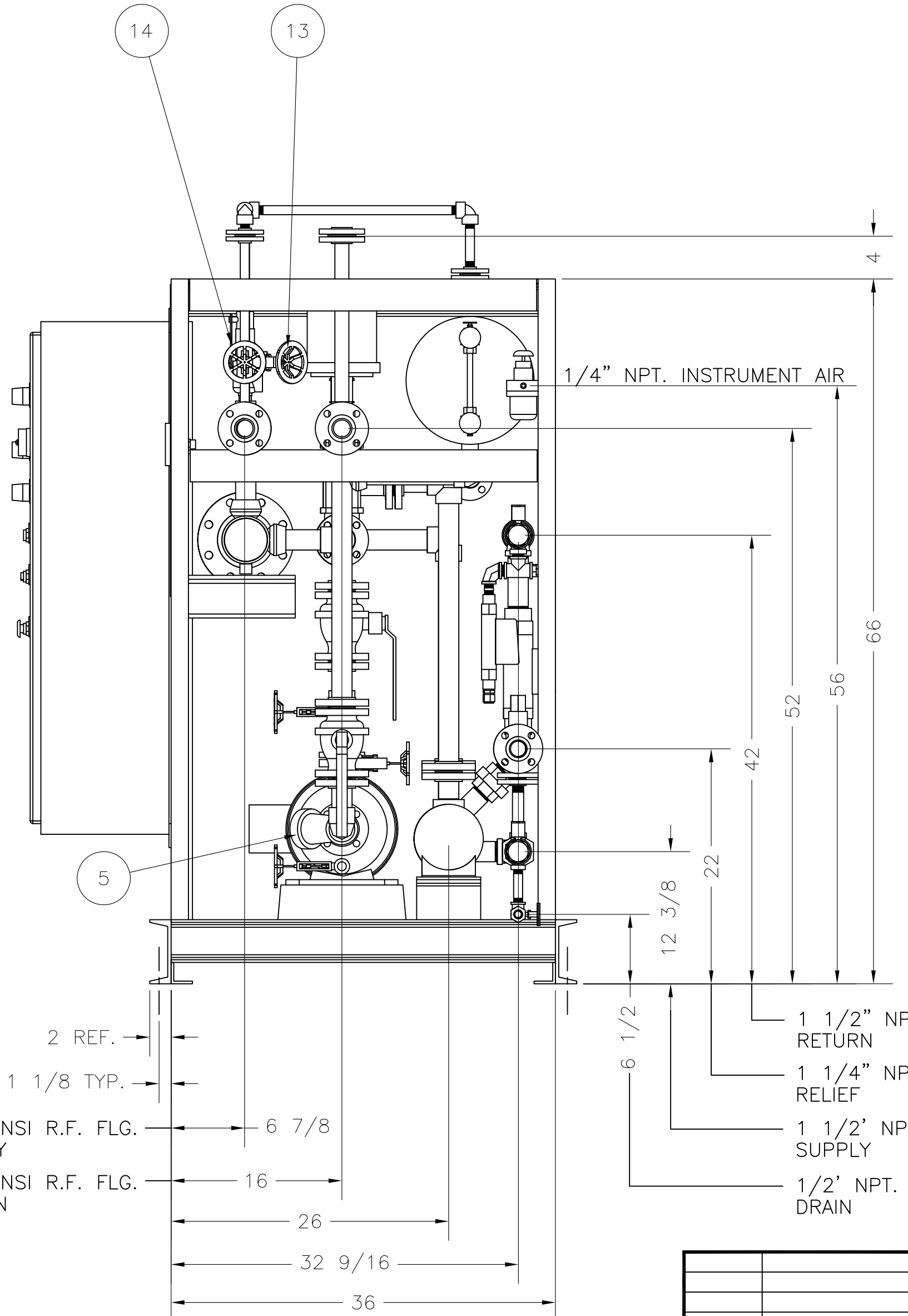
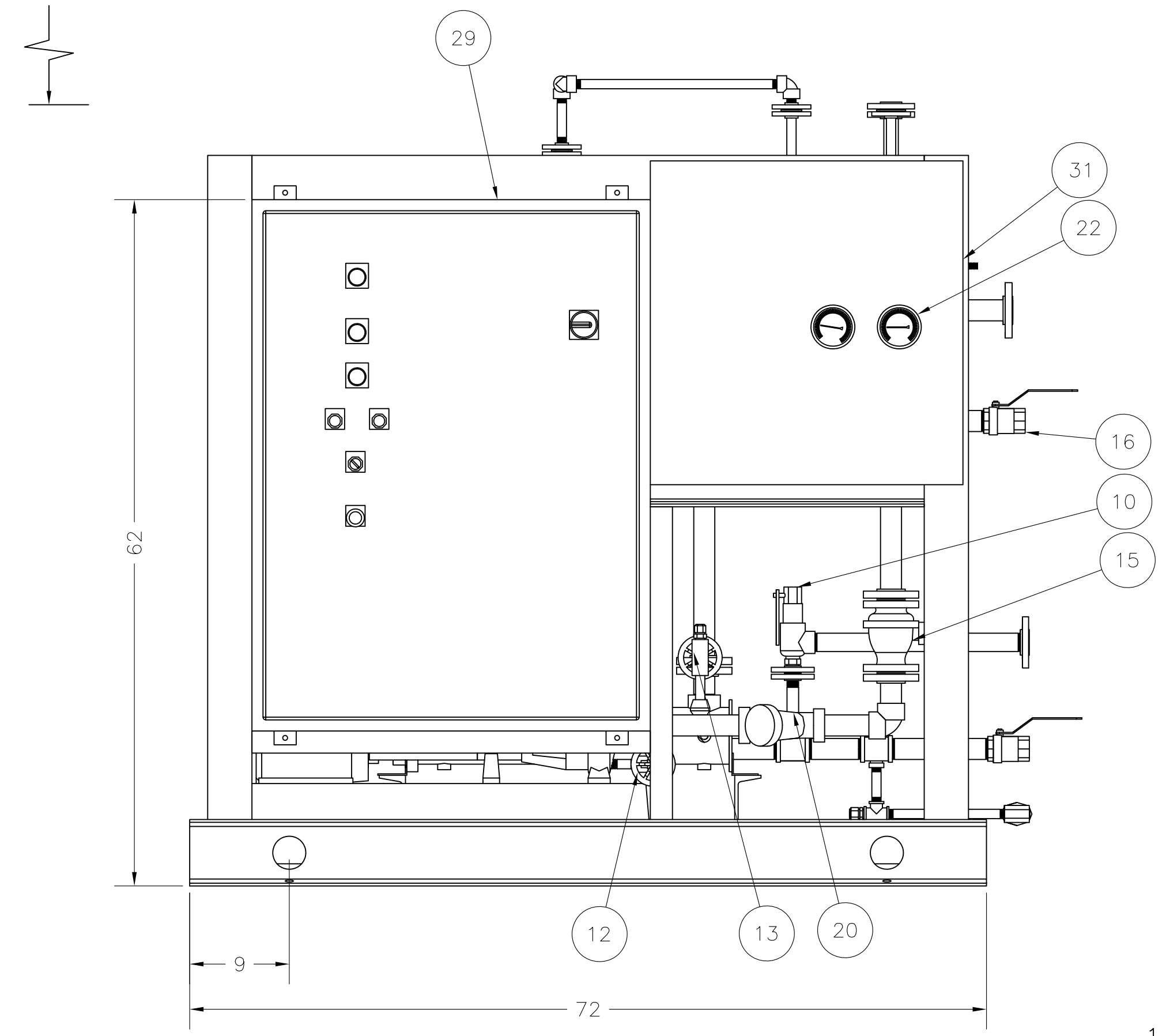
E.I. DU PONT	REFERENCE	DE5221.078
ELECTRICAL SCHEMATIC	REFERENCE	DE7185.078
10T-2440-GOLSP	REFERENCE	DE4148.078
SOUTH UNIT - PREBOND ROLL		
DRWN BY JEA	DATE 03/31/00	SHEET
APPD BY REC	DATE 04/04/00	SIZE C
DIMENSIONAL TOLERANCE UNLESS OTHERWISE NOTED		LINEAR ± 1/8" ANG ± 1°
SCALE NONE		CE6218.078

REV	DESCRIPTION	DATE	BY	APPD
D	AS BUILT	02/21/08	REC	
C	GENERAL REVISIONS	06/20/00	GP	
B	REVISED PER 4/20/00 APPROVAL COMMENTS	05/15/00	JEA	
A	RUN LITE ADDED, S/R CORRECTIONS	04/21/00	REC	REC



NOTE:
ALLOWABLE LOADS ON FLANGES = 0
DO NOT SUPPORT FIELD PIPING ON SKID

ITEM	QTY:	PART #	DESCRIPTION
1	1	210-410-0004	FRAME WELDMENT
2	1	220-010-0001	15 GAL. EXPANSION TANK (ASME CODED)
3	1	220-030-0004	SIGHT GLASS 1/2" NPT.
4	1	220-030-0021	FILL/VENT CAP 3/4" NPT.
5	1	250-010-0225	PUMP/MOTOR ASS'Y
6	1	270-030-0339	HEATER 24 KW
7	1	270-110-0012	HEATER CASE
8	1	270-250-0165	HEAT EXCHANGER, 16.5 Sq. Ft.
9	1	290-030-0163	RELIEF VALVE 1/2" MNPT. x 1" FNPT. (SET @ 100 PSIG.)
10	1	290-030-0184	RELIEF VALVE, 3/4" MNPT.x1 1/4" FNPT. (SET @ 125 PSIG)
12	1	290-070-0200	GATE VALVE, 1/2" NPT.
13	3	290-070-0201	GATE VALVE, 1/2" S.W. x NPT.
14	1	290-070-0202	GATE VALVE, 1/2" S.W.
15	2	290-080-0604	BALL VALVE, 1 1/2" 150# ANSI
16	2	290-080-0605	BALL VALVE 1-1/2" NPT.
17	1	290-080-0605	BALL VALVE 1-1/2" NPT.
18	1	290-080-0606	BALL VALVE, 1/2" NPT.
19	1	290-120-0608	CONTROL VALVE, 1 1/2" 150# ANSI
20	1	300-025-0098	STRAINER 1-1/2" SW.
21	1	300-040-0156	AIR FILTER/REGULATOR, 1/4" NPT.
22	2	310-010-0131	PRESSURE GAUGE, (0-60 PSIG)
23	2	310-020-0006	TEMPERATURE INDICATOR (0-250°F)
24	3	310-020-0006	TEMPERATURE INDICATOR (0-250°F)
25	2	310-020-0091	THERMOWELL, 3/4" NPT.
26	3	310-020-0091	THERMOWELL, 3/4" NPT.
27	1	310-040-0216	FLOW SWITCH/METER, 1/2" NPT.
28	1	310-040-0220	FLOW SWITCH/METER, 1 1/2" NPT.
29	1	500-030-0057	ELECTRICAL ENCLOSURE 30 X 20 X 8
30	1	610-030-0160	RTD W/ THERMOWELL, 3/4" S.W.
31	1		GAUGE-PANEL



1 1/2" 150# ANSI R.F. FLG. HOT OIL SUPPLY
1 1/2" 150# ANSI R.F. FLG. HOT OIL RETURN

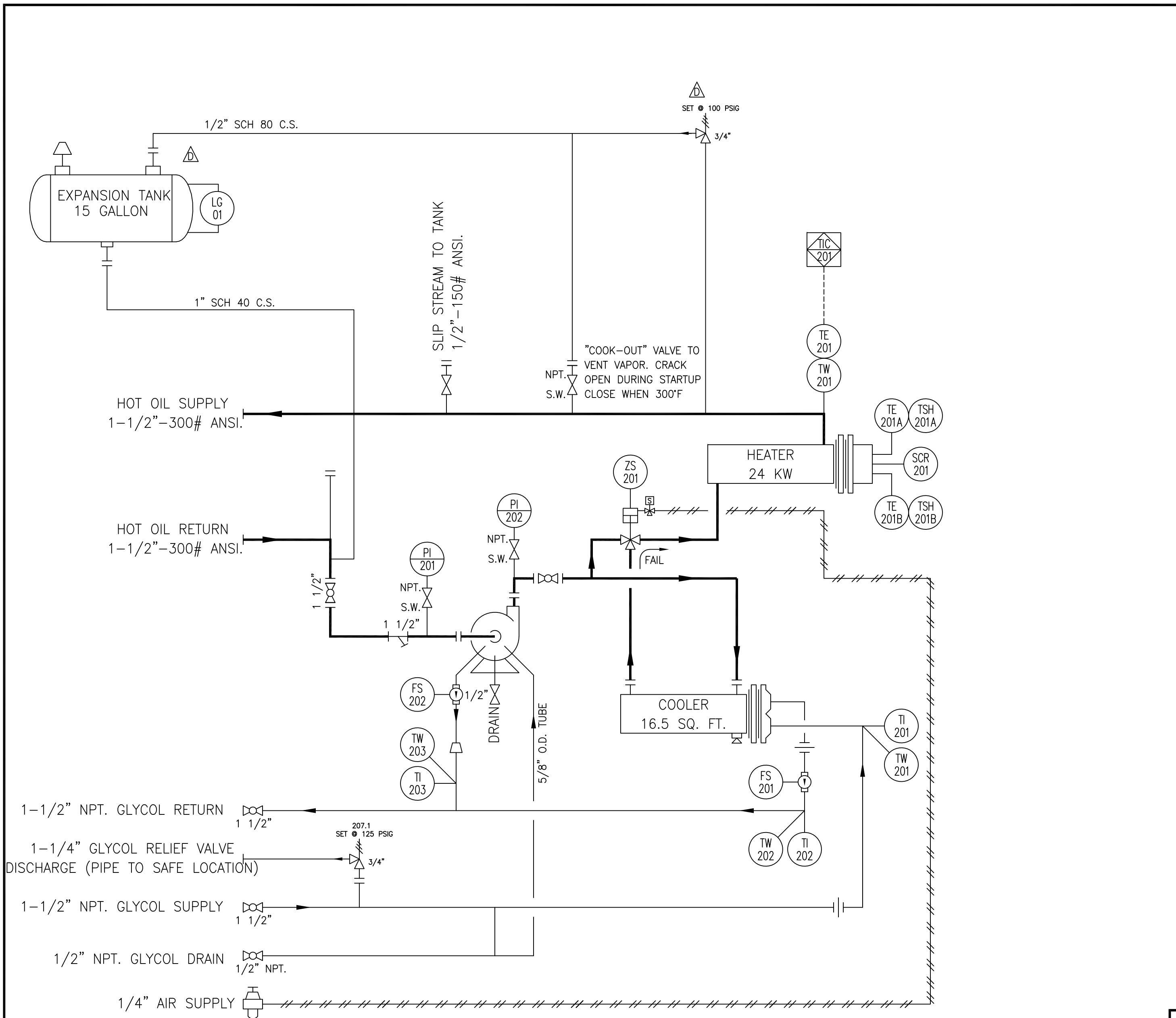
1 1/2" NPT. GLYCOL RETURN
1 1/4" NPT. GLYCOL RELIEF
1 1/2" NPT. GLYCOL SUPPLY
1/2" NPT. GLYCOL DRAIN

PROJECT: 452366
PLANT: SPRUANCE - TYVEK®
EQUIPMENT NUMBER: 1079-61135-205
P.O. No.: LRNC-9861

BUDZAR INDUSTRIES INC.
PHONE: (440-918-0505) FAX: (440-918-0606) EMAIL: ENGINEERING@BUDZAR.COM

REV	DESCRIPTION	DATE	BY	APPD	REVISIONS	DATE	BY	APPD	SCALE	SIZE	SHEET	SERIAL
C	ADD EXPANSION TANK & RELIEF VALVE	02/05/08	CB	REC	E. I. DU PONT							200001-2078-2
B	REVISED PER 04/25/00 APPROVAL COMMENTS & REVISE C.W. LINES FOR CORRECT FLOW METER ORIENTATION	05/17/00	JEA	REC	GENERAL ASSEMBLY							
A	REVISED PER 03/04/00 APPROVAL COMMENTS	04/12/00	JEA	REC	10T-2440-GOLSP							
REV	DESCRIPTION	DATE	BY	APPD	SOUTH UNIT (PRE-BOND)							

DE5221.078 C



LEGEND:

- = PRESSURE RELIEF VALVE
- = 3-WAY VALVE
- = GATE VALVE
- = STRAINER
- = GLOBE VALVE
- = BALL VALVE
- = CHECK VALVE
- = CONTROL VALVE
- = SOLENOID VALVE
- = AIR REGULATOR
- = AIR LINE
- = LOCAL MOUNTED INSTRUMENT
- = PANEL MOUNTED INSTRUMENT
- TW = THERMOWELL
- TE = TEMPERATURE ELEMENT
- SG = SIGHT GLASS
- PI = PRESSURE INDICATOR
- SG = SIGHT GLASS
- DPS = DIFFERENTIAL PRESSURE SWITCH
- TSH = TEMPERATURE SWITCH
- TIC = TEMPERATURE CONTROLLER
- SCR = HEATER MODULATING CONTROL

1-1/2" NPT. GLYCOL RETURN 1 1/2"

1-1/4" GLYCOL RELIEF VALVE DISCHARGE (PIPE TO SAFE LOCATION)

1-1/2" NPT. GLYCOL SUPPLY 1 1/2"

1/2" NPT. GLYCOL DRAIN 1/2" NPT.

1/4" AIR SUPPLY

BUDZAR INDUSTRIES INC.

PHONE: (440-918-0505) FAX: (440-918-0606) EMAIL: ENGINEERING@BUDZAR.COM

The information contained in this drawing, including the design and principles of construction disclosed, is the property of Budzar Industries, Incorporated and is confidential. All patent and design rights are reserved by Budzar Industries. This drawing, or the information contained herein, may not be reproduced in whole or in part, loaned, or otherwise communicated to any third party without the expressed written consent of Budzar Industries. Acceptance of this drawing will be construed as an agreement to the above.

E. I. DU PONT	REFERENCE	DE5217.078
PIPING AND INSTRUMENT DIAGRAM	REFERENCE	DE5218.078
10T-2440-GOLSP	REFERENCE	DE6215.078

DRWN BY CB	DATE 02/05/08	SHEET 1 OF 1	SERIAL 200001-2078-2
APPD BY REC	DATE MO-DAY-YR	SIZE C	
DIMENSIONAL TOLERANCE UNLESS OTHERWISE NOTED		LINEAR ± 1/8" ANG ± 1°	SCALE NONE

REV	DESCRIPTION	DATE	BY	APPD
A	AS BUILT	02/21/08	REC	