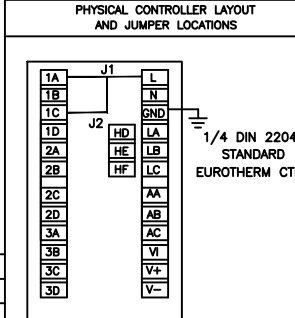
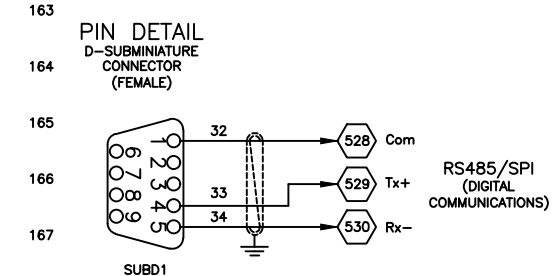
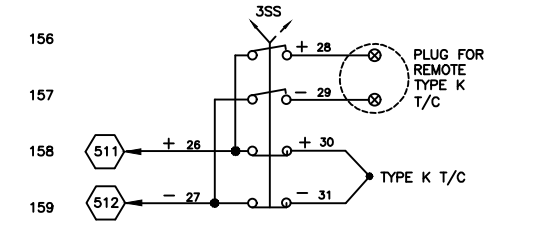


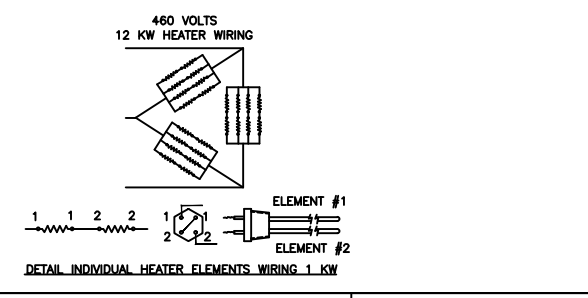
CONTROLLER PIN	ZONE 1		ZONE 2	
	RUNG NUMBER	WIRE NUMBER	RUNG NUMBER	WIRE NUMBER
501	L	129	10	.
502	N	134	4	.
503	GND	.	.	.
504	LA	.	.	.
505	LB	.	.	.
506	LC	.	.	.
507	AA	.	.	.
508	AB	.	.	.
509	AC	.	.	.
510	VI	.	.	.
511	V+	158	26	.
512	V-	159	27	.
513	1A	J1	10	.
514	1B	133	21	.
515	1C	J2	10	.
516	1D	131	20	.
517	2A	.	.	.
518	2B	.	.	.
519	2C	.	.	.
520	2D	.	.	.
521	3A	.	.	.
522	3B	.	.	.
523	3C	.	.	.
524	3D	.	.	.
525	HA	.	.	.
526	HB	.	.	.
527	HC	.	.	.
528	HD	165	32	.
529	HE	166	33	.
530	HF	167	34	.



DESIGNATION	QTY.	DESCRIPTION
2R	1	ALARM RELAY
SUBD1	1	9 PIN CONNECTOR
1AD	1	AUDIBLE DEVICE
1TDR	1	TIME DELAY RELAY
1SS,2SS,3SS	3	SELECTOR SWITCH
2M	1	PUMP RECIRCULATING
1TAS	1	TEMPERATURE SWITCH
1R	1	HIGH TEMPERATURE RELAY
1MF,1MR	1	MOTOR STARTER FORWARD, MOTOR STARTER REVERSE
6LT	1	LIGHT, AMBER
5LT	1	LIGHT, BLUE
2SOL	1	COOLING SOLENOID
SUPPRESSOR	2	SNUBBER
CONTROLLER	1	CONTROLLER
T/C	1	THERMOCOUPLE TYPE J
1T	1	TRANSFORMER
DISCONNECT SWITCH	1	DISCONNECT SWITCH
1LT,2LT,4LT,7LT	4	LIGHT, RED
3LT	1	LIGHT, GREEN
1SOL	1	AIR INLET SOLENOID
3PB	1	AIR PURGE BUTTON
1PS,2PS	2	PRESSURE SWITCH
1PB/2PB	1	START/STOP BUTTON
10.L	1	MOTOR OVERLOAD
1MTR	1	MOTOR
1SC	1	SAFETY CONTACTOR
1H	1	SOLID STATE HEATER CONTACTOR

NOTES: □

- REFER TO OPERATORS MANUAL FOR POWER SUPPLY REQ'D.
- ALL VOLTAGES ARE "AC" UNLESS OTHERWISE SPECIFIED.
- REFER TO CONTROLLER CONNECTIONS CHART FOR WIRING DETAILS.
- LAST WIRE NUMBER 36.
- THREE POSITION SELECTOR SWITCH SHOWN IN THE "OFF" POSITION.
- REVERSING MOTOR STARTER EQUIPPED WITH MECHANICAL INTERLOCK.
- ⊗ INDICATES TERMINAL BLOCK CONNECTION



REVISIONS	DESCRIPTION	BY	DATE	ECN NO.
1	516 WAS 518	CY	3/10/03	.

UNLESS OTHERWISE SPECIFIED DRAWN C.YERKOVICH 6/20/02

CHECKED CY 6/20/02

APP. RE 6/20/02

DESCRIPTION

**MOKON**

DIVISION  
PROTECTIVE CLOSURES CO., INC.  
2150 Elmwood Avenue, Buffalo, New York 14207

MODEL NO. H44112EC

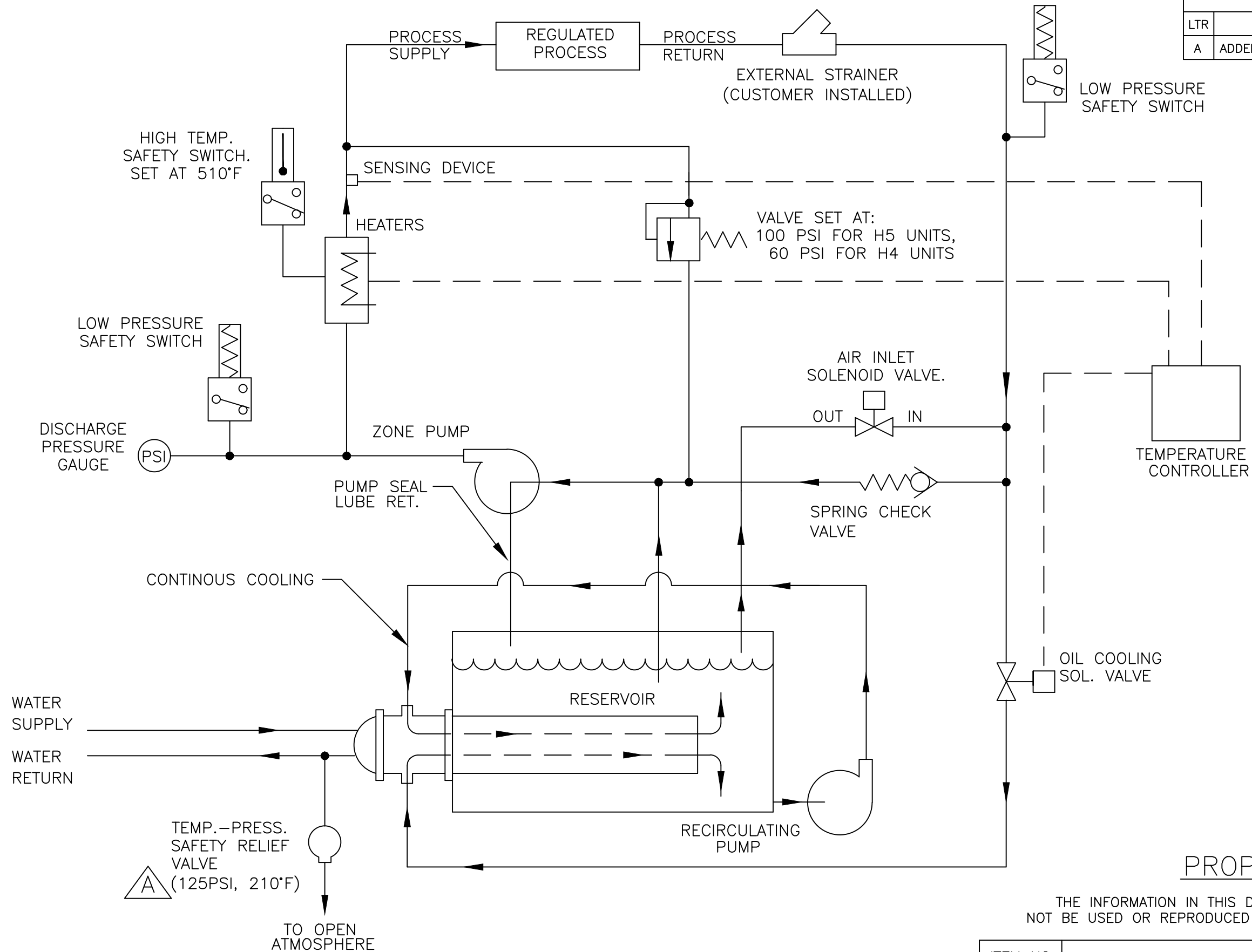
DWG. NO. 130-2113

SCALE: NONE

SHEET 1 OF 1

CAD GENERATED DRAWING 130-2113

REVISIONS				
LTR	DESCRIPTION	BY	DATE	ECN NO.
A	ADDED TEMP AND PRESSURE TO RELIEF VALVE	CY	9/4/01	



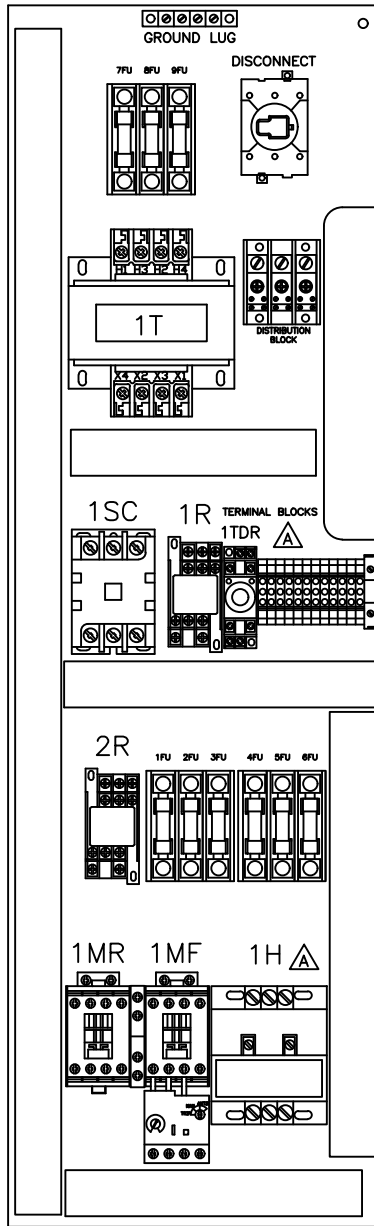
**PROPRIETARY NOTICE**

THE INFORMATION IN THIS DOCUMENT IS PROPRIETARY TO MOKON AND SHALL NOT BE USED OR REPRODUCED FOR ANY REASON WITHOUT PRIOR WRITTEN CONSENT.

ITEM NO.		DESCRIPTION		
UNLESS OTHERWISE SPECIFIED		DRAWN	P.FLEISCHMAN	3/21/01
.XX ± .010		CHECKED	P.FLEISCHMAN	3/21/01
.XXX ± .005		APP.	P.FLEISCHMAN	3/21/01
.XXXX ±		VERIFIED		.
ANGLES ± 1/2"				
RAD.& FILLETS.005-.015				
DESCRIPTION FLOW SCHEMATIC: SINGLE ZONE WITH DRUM REVERSE AND LOW PRESSURE ON RETURN LINE.				
SCALE NONE		MODEL NO. H4&H5 HTF SERIES		DWG. NO. 110-1105
			SHEET 1 OF 1	

**MOKON**

2150 Elmwood Avenue, Buffalo, New York 14207



A	MOVED 1TDR AND REPLACED 1H	SS	12/16/02	
LTR	DESCRIPTION	BY	DATE	APPROVED

REVISIONS

DRAWN	C.YERKOVICH	6/19/02
CHECKED	CY	6/19/02
APP.	RE	6/19/02

**MOKON**

DIVISION  
 PROTECTIVE CLOSURES CO.,INC.  
 2150 Elmwood Avenue, Buffalo, New York 14207

DESCRIPTION	MODEL NO.	DWG. NO.
PANEL LAYOUT H44112EC	H44112EC	100-1170
	SCALE	SHEET 1 OF 1
	FULL	