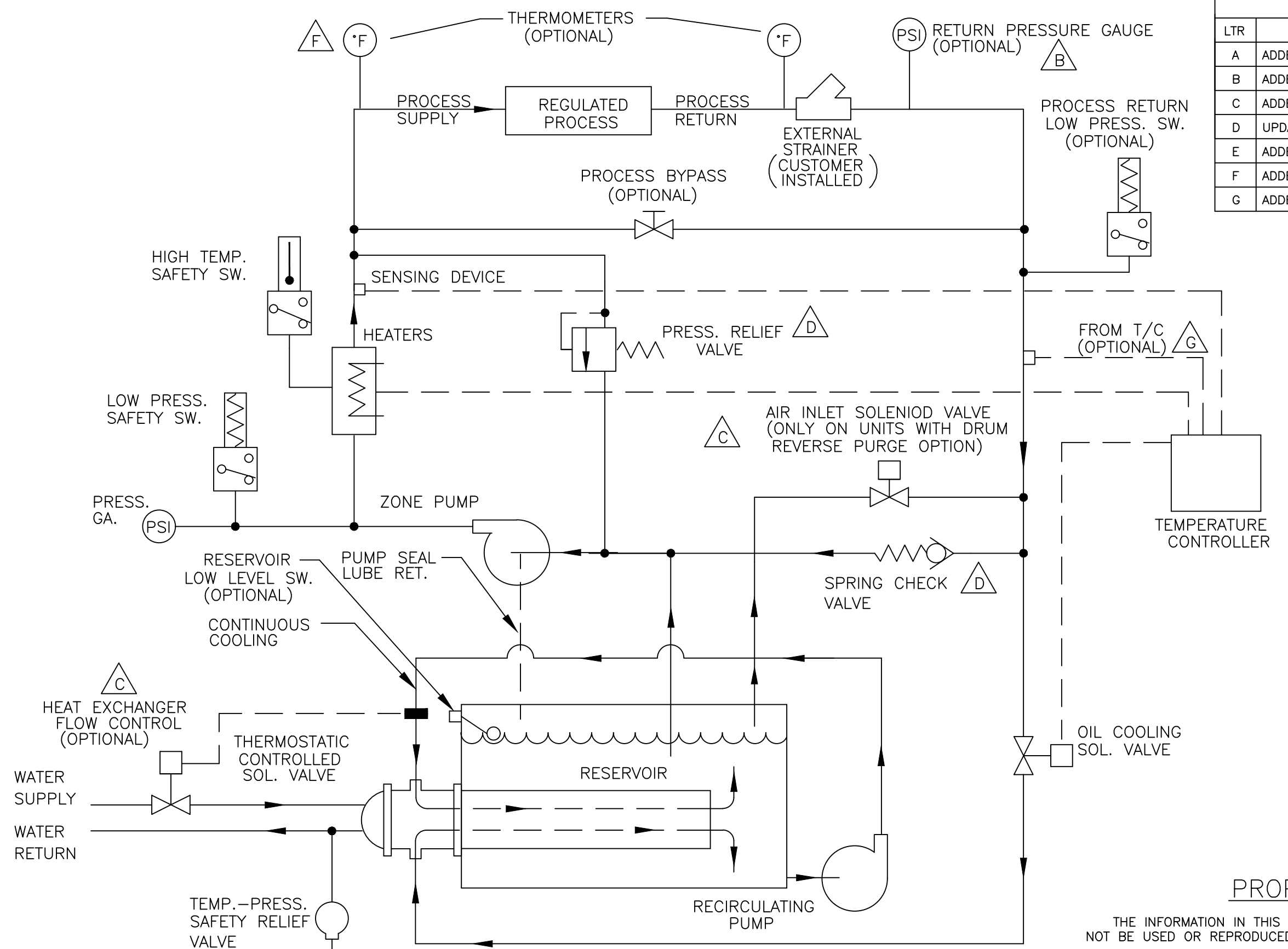


120-1216

CAD GENERATED DRAWING

REVISIONS			
LTR	DESCRIPTION	DATE	APPROVED
A	ADDED PROCESS BYPASS.	7/30/97	
B	ADDED OPTIONAL PRESS. GAUGE	11/11/97	
C	ADDED OPTIONAL HEAT EXCH. FLOW CNT.	6/25/98	
D	UPDATED SYMBOL REPRESENTAION	8/6/98	
E	ADDED DRUM REV. PURGE TO DESCRIPTION	10/28/98	
F	ADDED SUPPLY/RETURN THERMOMETERS	1/25/99	
G	ADDED FROM T/C (OPTIONAL)	6/14/00	



PROPRIETARY NOTICE

THE INFORMATION IN THIS DOCUMENT IS PROPRIETARY TO MOKON AND SHALL NOT BE USED OR REPRODUCED FOR ANY REASON WITHOUT PRIOR WRITTEN CONSENT.

ITEM NO.	DESCRIPTION		
UNLESS OTHERWISE SPECIFIED	DRAWN	R. CRUZ	2/17/97
.XX ± .010 .XXX ± .005 .XXXX ± ANGLES ± 1/2" RAD.& FILLETS.005-.015	CHECKED	CY	2/20/02
	APP.	PF	2/20/02
	VERIFIED		6/17/03
DESCRIPTION FLOW SCHEMATIC: SINGLE OR MULTI ZONE OIL UNIT W/ RECIRCULATING PUMP & OPTIONAL DRUM REVERSE PURGE			
B	MODEL NO.	DWG. NO.	
	H4&H5 HTF SERIES	110-0816	
SCALE NONE		SHEET 1 OF 1	

MOKON
2150 Elmwood Avenue, Buffalo, New York 14207

E