



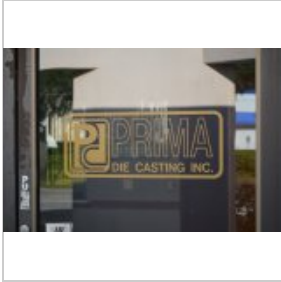
Industrial Machinery & Equipment > Loeb Winternitz Industrial Auctioneers > **Prima Die Casting Online Only Auction**

### Prima Die Casting Online Only Auction

by Loeb Winternitz Industrial Auctioneers

- Event Begins: Thursday, November 3, 9:00 AM Central
- First lots ends Tuesday, November 15, 9:00 AM Central
- Last lot ends Tuesday, November 15, 8:40 PM Central

Late Model CNC Machining, Die Casting, Machine Tools, Auxiliary Equipment, Tooling, Etc. – As Late As 2013!!!



#### Lot – Intellectual Property of “Prima Die Casting”, to Include: Company Nam

Lot #1 (Sale Order 1 of 700)

Lot – Intellectual Property of “Prima Die Casting”, to Include: Company Name, Phone/Fax Number(s), Available URL’s, Any Available Customer Lists, Drawings and/or Blueprints (if Available), and all Other Available Intangible Property Directly Related to the Intellectual Property of “Prima Die Casting” (No Fixtures or Inventory) (Sold - Subject to Approval) (Removal Cost: N/C)



#### Lot - End Mills, in (3) Boxes (Grinding Room) (Removal Cost: N/C)

Lot #2 (Sale Order 2 of 700)

Lot - End Mills, in (3) Boxes (Grinding Room) (Removal Cost: N/C)



#### Lot - End Mills in (3) Boxes (Grinding Room) (Removal Cost: N/C)

Lot #2A (Sale Order 2 of 700)

Lot - End Mills in (3) Boxes (Grinding Room) (Removal Cost: N/C)



#### Lot - End Mills, in (3) Boxes (Grinding Room) (Removal Cost: N/C)

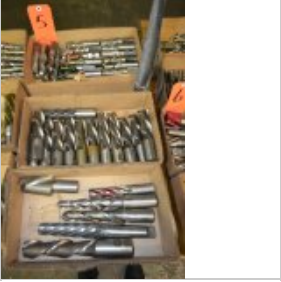
Lot #3 (Sale Order 3 of 700)

Lot - End Mills, in (3) Boxes (Grinding Room) (Removal Cost: N/C)

**Lot - End Mills, in (3) Boxes (Grinding Room) (Removal Cost: N/C)**

Lot #4 (Sale Order 4 of 700)

Lot - End Mills, in (3) Boxes (Grinding Room) (Removal Cost: N/C)

**Lot - End Mills, in (3) Boxes (Grinding Room) (Removal Cost: N/C)**

Lot #5 (Sale Order 5 of 700)

Lot - End Mills, in (3) Boxes (Grinding Room) (Removal Cost: N/C)

**Lot - End Mills, in (2) Boxes (Grinding Room) (Removal Cost: N/C)**

Lot #6 (Sale Order 6 of 700)

Lot - End Mills, in (2) Boxes (Grinding Room) (Removal Cost: N/C)

**Lot - End Mills, in (2) Boxes (Grinding Room) (Removal Cost: N/C)**

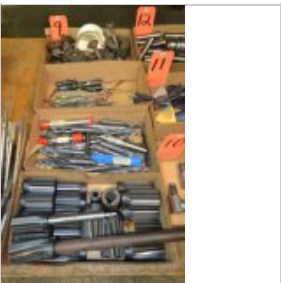
Lot #7 (Sale Order 7 of 700)

Lot - End Mills, in (2) Boxes (Grinding Room) (Removal Cost: N/C)

**Lot - Drill Bits, Counterbores, Taps, Reamers Etc., in (3) Boxes (Grinding**

Lot #8 (Sale Order 8 of 700)

Lot - Drill Bits, Counterbores, Taps, Reamers Etc., in (3) Boxes (Grinding Room) (Removal Cost: N/C)

**Lot - Reamers, Drill Bits, Mill Cutters Etc., in (4) Boxes (Grinding Room)**

Lot #9 (Sale Order 9 of 700)

Lot - Reamers, Drill Bits, Mill Cutters Etc., in (4) Boxes (Grinding Room) (Removal Cost: N/C)



**Lot - (3) Rotary Air Tools (Grinding Room) (Removal Cost: N/C)**

Lot #10 (Sale Order 10 of 700)

Lot - (3) Rotary Air Tools (Grinding Room) (Removal Cost: N/C)



**Lot - (3) Ryobi Detail Sanders (Grinding Room) (Removal Cost: N/C)**

Lot #11 (Sale Order 11 of 700)

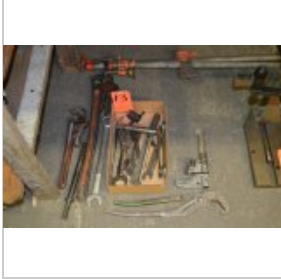
Lot - (3) Ryobi Detail Sanders (Grinding Room) (Removal Cost: N/C)



**Lot - Drill Chuck and R8 Collets (Grinding Room) (Removal Cost: N/C)**

Lot #12 (Sale Order 12 of 700)

Lot - Drill Chuck and R8 Collets (Grinding Room) (Removal Cost: N/C)



**Lot - Hand Tools (Grinding Room) (Removal Cost: N/C)**

Lot #13 (Sale Order 13 of 700)

Lot - Hand Tools (Grinding Room) (Removal Cost: N/C)



**Phase II Model 265-110 Hand Tapper (Grinding Room) (Removal Cost: N/C)**

Lot #14 (Sale Order 14 of 700)

Phase II Model 265-110 Hand Tapper (Grinding Room) (Removal Cost: N/C)



**Lot - Assorted Indicators (Grinding Room) (Removal Cost: N/C)**

Lot #15 (Sale Order 15 of 700)

Lot - Assorted Indicators (Grinding Room) (Removal Cost: N/C)



**Mitutoyo 12 in. - 18 in. O.D Micrometer Set, with Case (Grinding Room) (Rem**

Lot #16 (Sale Order 16 of 700)

Mitutoyo 12 in. - 18 in. O.D Micrometer Set, with Case (Grinding Room) (Removal Cost: N/C)



**Starrett 18 in. Vernier Height Gage and Go/No Go Hole Gage (Grinding Room)**

Lot #17 (Sale Order 17 of 700)

Starrett 18 in. Vernier Height Gage and Go/No Go Hole Gage (Grinding Room) (Removal Cost: N/C)



**Lot - Misc. Hand Tools (Grinding Room) (Removal Cost: N/C)**

Lot #18 (Sale Order 18 of 700)

Lot - Misc. Hand Tools (Grinding Room) (Removal Cost: N/C)



**Lot - Assorted Mitutoyo Inspection Tools (Grinding Room) (Removal Cost: N/C)**

Lot #19 (Sale Order 19 of 700)

Lot - Assorted Mitutoyo Inspection Tools (Grinding Room) (Removal Cost: N/C)



**Starrett Model 98 Precision Level (Grinding Room) (Removal Cost: N/C)**

Lot #20 (Sale Order 20 of 700)

Starrett Model 98 Precision Level (Grinding Room) (Removal Cost: N/C)



**72 in. x 25 in. Wood Top Shop Table (Grinding Room) (Removal Cost: \$25)**

Lot #21 (Sale Order 21 of 700)

72 in. x 25 in. Wood Top Shop Table (Grinding Room) (Removal Cost: \$25)



**60 in. x 30 in. Wood Top Shop Table (Grinding Room) (Removal Cost: \$25)**

Lot #22 (Sale Order 22 of 700)

60 in. x 30 in. Wood Top Shop Table (Grinding Room) (Removal Cost: \$25)



**Lot - Drill Bits, in (3) Indexes (Tool Room) (Removal Cost: N/C)**

Lot #23 (Sale Order 23 of 700)

Lot - Drill Bits, in (3) Indexes (Tool Room) (Removal Cost: N/C)



**Lot - Drill Bits, Reamers Etc., in (4) Boxes (Tool Room) (Removal Cost: N/C)**

Lot #24 (Sale Order 24 of 700)

Lot - Drill Bits, Reamers Etc., in (4) Boxes (Tool Room) (Removal Cost: N/C)



**Criterion Boring Head with Boring Bits (Tool Room) (Removal Cost: N/C)**

Lot #25 (Sale Order 25 of 700)

Criterion Boring Head with Boring Bits (Tool Room) (Removal Cost: N/C)



**Lot - (4) Drill Chucks (Tool Room) (Removal Cost: N/C)**

Lot #26 (Sale Order 26 of 700)

Lot - (4) Drill Chucks (Tool Room) (Removal Cost: N/C)



**Lot - Drill Bits in (6) Indexes, Transfer Punches (Tool Room) (Removal Cost**

Lot #27 (Sale Order 27 of 700)

Lot - Drill Bits in (6) Indexes, Transfer Punches (Tool Room) (Removal Cost: N/C)



**Lot - Angle Blocks, Parallels Etc. (Tool Room) (Removal Cost: N/C)**

Lot #28 (Sale Order 28 of 700)

Lot - Angle Blocks, Parallels Etc. (Tool Room) (Removal Cost: N/C)



**Lot - DME Interlocks and Hardware (Tool Room) (Removal Cost: N/C)**

Lot #29 (Sale Order 29 of 700)

Lot - DME Interlocks and Hardware (Tool Room) (Removal Cost: N/C)



**Lot - Assorted Tooling and Hardware (Tool Room) (Removal Cost: \$20)**

Lot #30 (Sale Order 30 of 700)

Lot - Assorted Tooling and Hardware (Tool Room) (Removal Cost: \$20)



**3-Door Wood Storage Cabinet (No Contents) (Tool Room) (Removal Cost: \$25)**

Lot #31 (Sale Order 31 of 700)

3-Door Wood Storage Cabinet (No Contents) (Tool Room) (Removal Cost: \$25)



**Reamer Set, with Case (Tool Room) (Removal Cost: N/C)**

Lot #32 (Sale Order 32 of 700)

Reamer Set, with Case (Tool Room) (Removal Cost: N/C)



**Lot - (3) Counter Bore Sets (Tool Room) (Removal Cost: N/C)**

Lot #33 (Sale Order 33 of 700)

Lot - (3) Counter Bore Sets (Tool Room) (Removal Cost: N/C)

**Lot - Drill Bits, in Plastic Bin (Tool Room) (Removal Cost: N/C)**

Lot #34 (Sale Order 34 of 700)

Lot - Drill Bits, in Plastic Bin (Tool Room) (Removal Cost: N/C)

**Lot - Drill Bits, in Box (Tool Room) (Removal Cost: N/C)**

Lot #35 (Sale Order 35 of 700)

Lot - Drill Bits, in Box (Tool Room) (Removal Cost: N/C)

**Lot - Drill Bits, Reamers, End Mills Etc., in (3) Boxes (Tool Room) (Removal Cost: N/C)**

Lot #36 (Sale Order 36 of 700)

Lot - Drill Bits, Reamers, End Mills Etc., in (3) Boxes (Tool Room) (Removal Cost: N/C)

**Lot - End Mills Etc., in (3) Boxes (Tool Room) (Removal Cost: N/C)**

Lot #37 (Sale Order 37 of 700)

Lot - End Mills Etc., in (3) Boxes (Tool Room) (Removal Cost: N/C)

**Lot - Taps and Reamers, in (3) Boxes (Tool Room) (Removal Cost: N/C)**

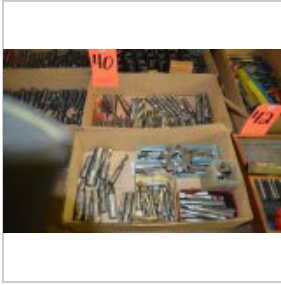
Lot #38 (Sale Order 38 of 700)

Lot - Taps and Reamers, in (3) Boxes (Tool Room) (Removal Cost: N/C)

**Lot - Carbide End Mills, in (2) Boxes (Tool Room) (Removal Cost: N/C)**

Lot #39 (Sale Order 39 of 700)

Lot - Carbide End Mills, in (2) Boxes (Tool Room) (Removal Cost: N/C)

**Lot - End Mills, Taps, Drill Bits Etc., in (2) Boxes (Tool Room) (Removal C**

Lot #40 (Sale Order 40 of 700)

Lot - End Mills, Taps, Drill Bits Etc., in (2) Boxes (Tool Room) (Removal Cost: N/C)

**Lot - Assorted Size Collets (Tool Room) (Removal Cost: N/C)**

Lot #41 (Sale Order 41 of 700)

Lot - Assorted Size Collets (Tool Room) (Removal Cost: N/C)

**Lot - DuMont Broaches, with Case (Tool Room) (Removal Cost: N/C)**

Lot #42 (Sale Order 42 of 700)

Lot - DuMont Broaches, with Case (Tool Room) (Removal Cost: N/C)

**Lot - Assorted Cutting Tools, in (1) Box (Tool Room) (Removal Cost: N/C)**

Lot #43 (Sale Order 43 of 700)

Lot - Assorted Cutting Tools, in (1) Box (Tool Room) (Removal Cost: N/C)

**High Speed Bench Type Horizontal Drilling Machine (Tool Room) (Removal Cost**

Lot #46 (Sale Order 46 of 700)

High Speed Bench Type Horizontal Drilling Machine (Tool Room) (Removal Cost: \$20)

**Baldor 4 in. Double End Grinder, S/N: W289; with Pedestal (Tool Room) (Remo**

Lot #47 (Sale Order 47 of 700)

Baldor 4 in. Double End Grinder, S/N: W289; with Pedestal (Tool Room) (Removal Cost: \$20)



**Baldor 4 in. Double End Bench Grinder, S/N: NW383 (Tool Room) (Removal Cost**

Lot #48 (Sale Order 48 of 700)

Baldor 4 in. Double End Bench Grinder, S/N: NW383 (Tool Room) (Removal Cost: \$20)

**Feinmechanik Michael Decker Model S0 Tool & Cutter Grinder, S/N: 89-24150 (**

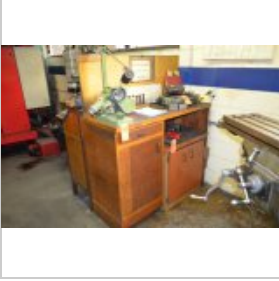
Lot #49 (Sale Order 49 of 700)

Feinmechanik Michael Decker Model S0 Tool &amp; Cutter Grinder, S/N: 89-24150 (Tool Room) (Removal Cost: \$20)

**SRD Bench Type Drill Bit Sharpener (Tool Room) (Removal Cost: \$20)**

Lot #50 (Sale Order 50 of 700)

SRD Bench Type Drill Bit Sharpener (Tool Room) (Removal Cost: \$20)

**Lot - Wood Bench and 2-Door Cabinet with Misc. Contents, Including Grinding**

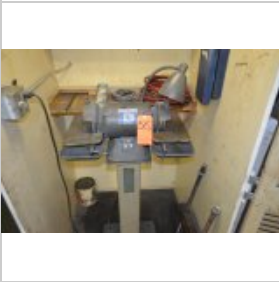
Lot #51 (Sale Order 51 of 700)

Lot - Wood Bench and 2-Door Cabinet with Misc. Contents, Including Grinding Wheels (Tool Room) (Removal Cost: \$25)

**Phase II Arbor Press, S/N: 260-105 (Tool Room) (Removal Cost: \$20)**

Lot #54 (Sale Order 54 of 700)

Phase II Arbor Press, S/N: 260-105 (Tool Room) (Removal Cost: \$20)

**Baldor 1/2 HP Double End Tool and Cutter Grinder, S/N: A-559-343; on Pedest**

Lot #55 (Sale Order 55 of 700)

Baldor 1/2 HP Double End Tool and Cutter Grinder, S/N: A-559-343; on Pedestal (Tool Room) (Removal Cost: \$20)

**Kalamazoo 8 in. Belt Sander (Tool Room) (Removal Cost: \$50)**

Lot #56 (Sale Order 56 of 700)

Kalamazoo 8 in. Belt Sander (Tool Room) (Removal Cost: \$50)

**Baldor 10 in. Model M00-21007292 Double End Pedestal Buffing Machine, S/N:**

Lot #57 (Sale Order 57 of 700)

Baldor 10 in. Model M00-21007292 Double End Pedestal Buffing Machine, S/N: P10-92; with 5-HP Motor (Tool Room) (Removal Cost: \$50)

**CM Lodestar 2-Ton Chain Hoist (Tool Room) (Removal Cost: \$75)**

Lot #58 (Sale Order 58 of 700)

CM Lodestar 2-Ton Chain Hoist (Tool Room) (Removal Cost: \$75)

**Air Hose Reel (Grinding Room) (Removal Cost: \$25)**

Lot #59 (Sale Order 59 of 700)

Air Hose Reel (Grinding Room) (Removal Cost: \$25)

**Baldor 6 in. Bench Grinder (Grinding Room) (Removal Cost: \$20)**

Lot #60 (Sale Order 60 of 700)

Baldor 6 in. Bench Grinder (Grinding Room) (Removal Cost: \$20)

**Thermolyne Model 1900 Hot Plate (Welding Room) (Removal Cost: N/C)**

Lot #61 (Sale Order 61 of 700)

Thermolyne Model 1900 Hot Plate (Welding Room) (Removal Cost: N/C)

**Miller 300-Amp Syncrowave 300 AC/DC Gas Tungsten Arc or Shielded Welder, S/**

Lot #62 (Sale Order 62 of 700)

Miller 300-Amp Syncrowave 300 AC/DC Gas Tungsten Arc or Shielded Welder, S/N: JH161812; with Water Chiller (No Gas Cylinders, Welding Rod, or Rack) (Welding Room) (Removal Cost: \$150)

**Lot - Welding Rod, with Stand (Welding Room) (Removal Cost: \$10)**

Lot #63 (Sale Order 63 of 700)

Lot - Welding Rod, with Stand (Welding Room) (Removal Cost: \$10)

**Lot - 74 in. x 18 in. Welding table, with Light and Stool (Welding Room) (R)**

Lot #64 (Sale Order 64 of 700)

Lot - 74 in. x 18 in. Welding table, with Light and Stool (Welding Room) (Removal Cost: \$10)

**Lot - 5-Drawer Lista Cabinet with Contents, 2-Door Wall Mount Cabinet with**

Lot #65 (Sale Order 65 of 700)

Lot - 5-Drawer Lista Cabinet with Contents, 2-Door Wall Mount Cabinet with Contents, Welding Curtain (Welding Room) (Removal Cost: \$25)

**Lincoln 250-Amp Power Mig 255C Mig Welder, S/N: U1080502210 (Welding Room)**

Lot #67 (Sale Order 67 of 700)

Lincoln 250-Amp Power Mig 255C Mig Welder, S/N: U1080502210 (Welding Room) (Removal Cost: \$20)

**Lincoln 315-Amp Square Wave Tig 275 Tig Welder, S/N: U1981102049 (Welding R**

Lot #68 (Sale Order 68 of 700)

Lincoln 315-Amp Square Wave Tig 275 Tig Welder, S/N: U1981102049 (Welding Room) (Removal Cost: \$20)

**Kalamazoo 10 in. Cut-Off Saw, with Lighted Cabinet (Tool Room) (Removal Cos)**

Lot #70 (Sale Order 70 of 700)

Kalamazoo 10 in. Cut-Off Saw, with Lighted Cabinet (Tool Room) (Removal Cost: \$20)

**Parker Hydraulic Hose Fitting Crimping Machine, with Dies (Die Repair Shop)**

Lot #72 (Sale Order 72 of 700)

Parker Hydraulic Hose Fitting Crimping Machine, with Dies (Die Repair Shop) (Removal Cost: \$20)

**Milwaukee Model 4202 Electromagnetic Base Drill, with 3/4 in. Cap. Model 42**

Lot #73 (Sale Order 73 of 700)

Milwaukee Model 4202 Electromagnetic Base Drill, with 3/4 in. Cap. Model 4262-1 Drill (Die Repair Shop) (Removal Cost: N/C)

**Baldor Model 8107WD Double End Bench Grinder, S/N: P10-94 (Die Repair) (Rem)**

Lot #74 (Sale Order 74 of 700)

Baldor Model 8107WD Double End Bench Grinder, S/N: P10-94 (Die Repair) (Removal Cost: \$20)

**Schlegel 7 in. Model EMF180 Bench Vise, with Stand (Die Repair) (Removal Co)**

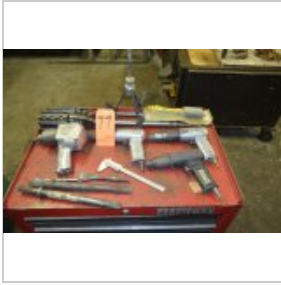
Lot #75 (Sale Order 75 of 700)

Schlegel 7 in. Model EMF180 Bench Vise, with Stand (Die Repair) (Removal Cost: \$25)

**Lot - (3) Milwaukee Power Tools, to Include: (1) 7 in. Heavy Duty Grinder,**

Lot #76 (Sale Order 76 of 700)

Lot - (3) Milwaukee Power Tools, to Include: (1) 7 in. Heavy Duty Grinder, 1) 4-1/2 in. Grinder, and (1) 1/2 in. Drill (Die Repair Shop) (Removal Cost: N/C)



**Lot - Assorted Pneumatic and Hand Tools (Die Repair Shop) (Removal Cost: N/**

Lot #77 (Sale Order 77 of 700)

Lot - Assorted Pneumatic and Hand Tools (Die Repair Shop) (Removal Cost: N/C)



**3/4 in. Heavy Duty Drill (Die Repair Shop) (Removal Cost: N/C)**

Lot #79 (Sale Order 79 of 700)

3/4 in. Heavy Duty Drill (Die Repair Shop) (Removal Cost: N/C)



**Lot - Assorted Hand Tools Including: Wheel Pullers, Welding Pliers, Clamps**

Lot #80 (Sale Order 80 of 700)

Lot - Assorted Hand Tools Including: Wheel Pullers, Welding Pliers, Clamps Etc. (Die Repair Shop) (Removal Cost: \$10)



**Amrox 20-Ton Model DG20 Hydraulic H-Frame Shop Press (Die Repair) (Removal**

Lot #81 (Sale Order 81 of 700)

Amrox 20-Ton Model DG20 Hydraulic H-Frame Shop Press (Die Repair) (Removal Cost: \$50)



**Trinco Reach-In Dry Blast Cabinet (Die Repair) (Removal Cost: \$75)**

Lot #82 (Sale Order 82 of 700)

Trinco Reach-In Dry Blast Cabinet (Die Repair) (Removal Cost: \$75)



**Milwaukee Portable Wet/Dry Vacuum (Die Repair Shop) (Removal Cost: \$10)**

Lot #83 (Sale Order 83 of 700)

Milwaukee Portable Wet/Dry Vacuum (Die Repair Shop) (Removal Cost: \$10)

**Cadillac Sand Blast Tank (Die Repair) (Removal Cost: \$10)**

Lot #84 (Sale Order 84 of 700)

Cadillac Sand Blast Tank (Die Repair) (Removal Cost: \$10)

**Pexto 52 in. x 16 ga. Model 152-K Foot Shear, S/N: 4167 (Die Repair) (Remov**

Lot #85 (Sale Order 85 of 700)

Pexto 52 in. x 16 ga. Model 152-K Foot Shear, S/N: 4167 (Die Repair) (Removal Cost: \$75)

**Di-Acro 24 in. Hand Brake, S/N: J-1239 (Die Repair) (Removal Cost: \$50)**

Lot #86 (Sale Order 86 of 700)

Di-Acro 24 in. Hand Brake, S/N: J-1239 (Die Repair) (Removal Cost: \$50)

**Clausing 20 in. Model 22V1 Drill Press, S/N: 504643; with Drill Vise (Die**

Lot #87 (Sale Order 87 of 700)

Clausing 20 in. Model 22V1 Drill Press, S/N: 504643; with Drill Vise (Die Repair) (Removal Cost: \$50)

**Lot - (2) Enerpac 17-Ton Cap. Model SAF-T-LITE JTA-176 Hydraulic Jacks, 6-1**

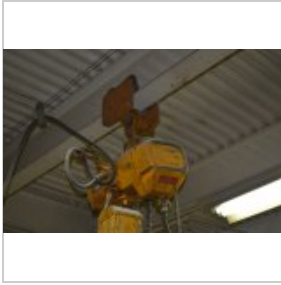
Lot #88 (Sale Order 88 of 700)

Lot - (2) Enerpac 17-Ton Cap. Model SAF-T-LITE JTA-176 Hydraulic Jacks, 6-1/2 in. (approx.) Stroke (Die Repair) (Removal Cost: \$10)

**Harrington 2-Ton Electric Chain Hoist (Die Repair Shop) (Removal Cost: \$100**

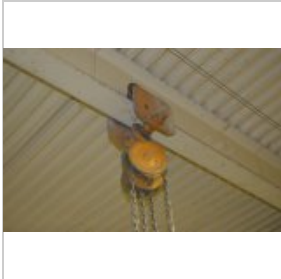
Lot #91 (Sale Order 91 of 700)

Harrington 2-Ton Electric Chain Hoist (Die Repair Shop) (Removal Cost: \$100)

**2-Ton Electric Chain Hoist (Die Repair Shop) (Removal Cost: \$100)**

Lot #92 (Sale Order 92 of 700)

2-Ton Electric Chain Hoist (Die Repair Shop) (Removal Cost: \$100)

**Lot - (2) 2-Ton Manual Chain Hoists (Die Repair Shop) (Removal Cost: \$75)**

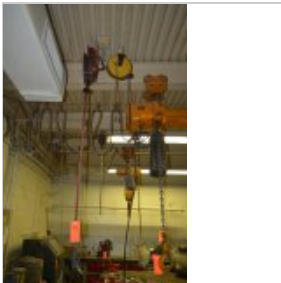
Lot #93 (Sale Order 93 of 700)

Lot - (2) 2-Ton Manual Chain Hoists (Die Repair Shop) (Removal Cost: \$75)

**Portable Hydraulic Pump (Die Repair Shop) (Removal Cost: \$25)**

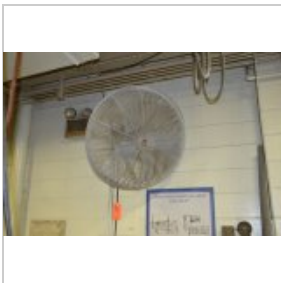
Lot #94 (Sale Order 94 of 700)

Portable Hydraulic Pump (Die Repair Shop) (Removal Cost: \$25)

**Lot - (2) Air Hose Reels, and (1) Electric Cord Reel (Die Repair Shop) (Removal Cost: \$25)**

Lot #95 (Sale Order 95 of 700)

Lot - (2) Air Hose Reels, and (1) Electric Cord Reel (Die Repair Shop) (Removal Cost: \$25)

**Wall Mounted Fan (Die Repair Shop) (Removal Cost: \$20)**

Lot #96 (Sale Order 96 of 700)

Wall Mounted Fan (Die Repair Shop) (Removal Cost: \$20)

**Lot - (2) Tool Cabinets, 15 & 9-Drawer, Fasteners, Fuses, Electric, Bearing**

Lot #98 (Sale Order 98 of 700)

Lot - (2) Tool Cabinets, 15 &amp; 9-Drawer, Fasteners, Fuses, Electric, Bearings Etc. (Die Repair) (Removal Cost: \$100)



**Lot - Die Inspection Station Including: Wall Mount Grinder, Desk, Chair, Ca**

Lot #99 (Sale Order 99 of 700)

Lot - Die Inspection Station Including: Wall Mount Grinder, Desk, Chair, Cabinets and Contents (No Dies or Fixtures) (Die Repair Shop) (Removal Cost: \$25)



**Lot - Pallet Rack with Small Parts Cabinets (No Dies or Fixtures) (Die Repa**

Lot #100 (Sale Order 100 of 700)

Lot - Pallet Rack with Small Parts Cabinets (No Dies or Fixtures) (Die Repair) (Removal Cost: \$100)



**Bridgeport 2-HP Vertical Milling Machine, S/N: 434190987X; with 9 in. x 42**

Lot #101 (Sale Order 101 of 700)

Bridgeport 2-HP Vertical Milling Machine, S/N: 434190987X; with 9 in. x 42 in. Table, Acu-Rite 3-Axis Digital Read-Out, Holddown Tooling, Power Feed Table (Tool Room) (Removal Cost: \$200)



**Lot - R8 Tooling (Tool Room) (Removal Cost: N/C)**

Lot #102 (Sale Order 102 of 700)

Lot - R8 Tooling (Tool Room) (Removal Cost: N/C)



**Milwaukee 15-Gal. Capacity Model 8925 Wet/Dry Shop Vac, S/N: 634-8764 (Tool**

Lot #103 (Sale Order 103 of 700)

Milwaukee 15-Gal. Capacity Model 8925 Wet/Dry Shop Vac, S/N: 634-8764 (Tool Room) (Removal Cost: N/C)



**Deckel Model KF-2 Copy Milling Machine, S/N: 4701 (2nd Floor) (Removal Cost**

Lot #104 (Sale Order 104 of 700)

Deckel Model KF-2 Copy Milling Machine, S/N: 4701 (2nd Floor) (Removal Cost: \$250)



**Bridgeport 2-HP Vertical Milling Machine, S/N: 253195; with 9 in. x 42 in.**

Lot #106 (Sale Order 106 of 700)

Bridgeport 2-HP Vertical Milling Machine, S/N: 253195; with 9 in. x 42 in. Table, Mini-Wizard Digital Read-Out, Holddown Tooling (Tool Room) (Removal Cost: \$200)

**Lot - R8 Tooling (Tool Room) (Removal Cost: N/C)**

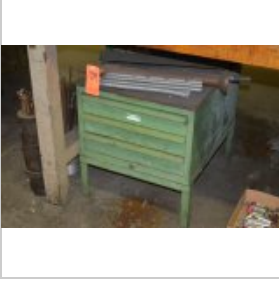
Lot #107 (Sale Order 107 of 700)

Lot - R8 Tooling (Tool Room) (Removal Cost: N/C)

**Lot - 2-Door Cabinet with Contents (Tool Room) (Removal Cost: \$20)**

Lot #108 (Sale Order 108 of 700)

Lot - 2-Door Cabinet with Contents (Tool Room) (Removal Cost: \$20)

**Lot - 3-Drawer Cabinet with Contents (Tool Room) (Removal Cost: \$20)**

Lot #109 (Sale Order 109 of 700)

Lot - 3-Drawer Cabinet with Contents (Tool Room) (Removal Cost: \$20)

**Heavy Duty Cart (Tool Room) (Removal Cost: N/C)**

Lot #110 (Sale Order 110 of 700)

Heavy Duty Cart (Tool Room) (Removal Cost: N/C)

**Bridgeport 2-HP Vertical Milling Machine, S/N: 253116; with 9 in. x 42 in.**

Lot #111 (Sale Order 111 of 700)

Bridgeport 2-HP Vertical Milling Machine, S/N: 253116; with 9 in. x 42 in. Table, Mini-Wizard Digital Read-Out, Holddown Tooling (Tool Room) (Removal Cost: \$200)

**Lot - R8 Tooling (Tool Room) (Removal Cost: N/C)**

Lot #112 (Sale Order 112 of 700)

Lot - R8 Tooling (Tool Room) (Removal Cost: N/C)

**Astral 18 in. x 24 in. Granite Surface Plate, S/N: 6647 (Tool Room) (Removal Cost: \$20)**

Lot #113 (Sale Order 113 of 700)

Astral 18 in. x 24 in. Granite Surface Plate, S/N: 6647 (Tool Room) (Removal Cost: \$20)

**Deckel Model GK21 Pantograph, S/N: 5955 (Tool Room) (Removal Cost: \$150)**

Lot #114 (Sale Order 114 of 700)

Deckel Model GK21 Pantograph, S/N: 5955 (Tool Room) (Removal Cost: \$150)

**Bridgeport 2-HP Vertical Milling Machine, S/N: 253113; with 9 in. x 42 in. Table, Anilam Mini-Wizard 111 Digital Read-Out, Holddown Set (Bridgeport 6 in. Machine Vise Not Included) (Tool Room) (Removal Cost: \$200)**

Lot #116 (Sale Order 116 of 700)

Bridgeport 2-HP Vertical Milling Machine, S/N: 253113; with 9 in. x 42 in. Table, Anilam Mini-Wizard 111 Digital Read-Out, Holddown Set (Bridgeport 6 in. Machine Vise Not Included) (Tool Room) (Removal Cost: \$200)

**Lot - R8 Tooling (Tool Room) (Removal Cost: N/C)**

Lot #117 (Sale Order 117 of 700)

Lot - R8 Tooling (Tool Room) (Removal Cost: N/C)

**Single Door Cabinet, with Contents (Tool Room) (Removal Cost: \$20)**

Lot #118 (Sale Order 118 of 700)

Single Door Cabinet, with Contents (Tool Room) (Removal Cost: \$20)



**Scripta Model S3011X Duplicator Milling Machine, S/N: 202H (2nd Floor) (Rem**

Lot #119 (Sale Order 119 of 700)

Scripta Model S3011X Duplicator Milling Machine, S/N: 202H (2nd Floor) (Removal Cost: \$100)



**Bridgeport 2-HP Vertical Milling Machine, S/N: 240328; with 9 in. x 42 in.**

Lot #121 (Sale Order 121 of 700)

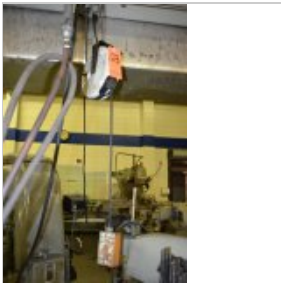
Bridgeport 2-HP Vertical Milling Machine, S/N: 240328; with 9 in. x 42 in. Table, Anilam Spirt Digital Read-Out, Holddown Set (Kurt 6 in. Machine Vise Not Included) (Tool Room) (Removal Cost: \$200)



**Lot - R8 Tooling (Tool Room) (Removal Cost: N/C)**

Lot #122 (Sale Order 122 of 700)

Lot - R8 Tooling (Tool Room) (Removal Cost: N/C)



**Electric Cord Reel (Tool Room) (Removal Cost: \$10)**

Lot #123 (Sale Order 123 of 700)

Electric Cord Reel (Tool Room) (Removal Cost: \$10)



**Bridgeport 1-1/2 HP Vertical Milling Machine, S/N: 165400; with 9 in. x 42**

Lot #126 (Sale Order 126 of 700)

Bridgeport 1-1/2 HP Vertical Milling Machine, S/N: 165400; with 9 in. x 42 in. Table, Holddown Set (Tool Room) (Removal Cost: \$200)



**Lot - R8 Tooling (Tool Room) (Removal Cost: N/C)**

Lot #127 (Sale Order 127 of 700)

Lot - R8 Tooling (Tool Room) (Removal Cost: N/C)

**Bridgeport 1-HP Vertical Milling Machine, S/N: 96861; with 9 in. x 42 in. T**

Lot #128 (Sale Order 128 of 700)

Bridgeport 1-HP Vertical Milling Machine, S/N: 96861; with 9 in. x 42 in. Table (2nd Floor) (Removal Cost: \$150)

**Bridgeport 1-HP Vertical Milling Machine, S/N: 161925; with 9 in. x 42 in.**

Lot #129 (Sale Order 129 of 700)

Bridgeport 1-HP Vertical Milling Machine, S/N: 161925; with 9 in. x 42 in. Table (Vibratory Finishing Room) (Removal Cost: \$150)

**Kurt 6 in. Machine Vise (Tool Room) (Removal Cost: \$10)**

Lot #130 (Sale Order 130 of 700)

Kurt 6 in. Machine Vise (Tool Room) (Removal Cost: \$10)

**Bridgeport 6 in. Machine Vise (Tool Room) (Removal Cost: \$10)**

Lot #131 (Sale Order 131 of 700)

Bridgeport 6 in. Machine Vise (Tool Room) (Removal Cost: \$10)

**Bridgeport 1-HP Vertical Milling Machine, S/N: 153761; with 9 in. x 42 in.**

Lot #132 (Sale Order 132 of 700)

Bridgeport 1-HP Vertical Milling Machine, S/N: 153761; with 9 in. x 42 in. Power Feed Table (Vibratory Finishing Room) (Removal Cost: \$150)

**Bridgeport 1-HP Vertical Milling Machine, S/N: 96847; with 9 in. x 42 in. T**

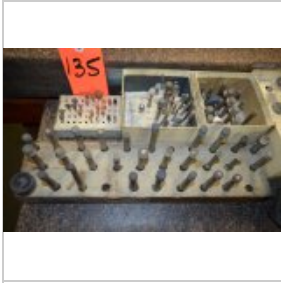
Lot #133 (Sale Order 133 of 700)

Bridgeport 1-HP Vertical Milling Machine, S/N: 96847; with 9 in. x 42 in. Table (2nd Floor) (Removal Cost: \$250)

**Moore Jig Grinder, 10 in x 16 in Table, Mini-Wizard Digital Read-Out, Cabinet**

Lot #134 (Sale Order 134 of 700)

Moore Jig Grinder, 10 in x 16 in Table, Mini-Wizard Digital Read-Out, Cabinet, Related Tooling (No Dies or Fixtures) (Tool Room) (Removal Cost: \$350)

**Lot - Mounted Wheels (Tool Room) (Removal Cost: N/C)**

Lot #135 (Sale Order 135 of 700)

Lot - Mounted Wheels (Tool Room) (Removal Cost: N/C)

**Diatest .380 in. - .830 in. Dial Bore Gage Set (Tool Room) (Removal Cost: N/C)**

Lot #136 (Sale Order 136 of 700)

Diatest .380 in. - .830 in. Dial Bore Gage Set (Tool Room) (Removal Cost: N/C)

**Diatest .8220 in. - 1.1300 in. Dial Bore Gage Set (Tool Room) (Removal Cost: N/C)**

Lot #137 (Sale Order 137 of 700)

Diatest .8220 in. - 1.1300 in. Dial Bore Gage Set (Tool Room) (Removal Cost: N/C)

**Starrett 3.000 in. - 5.187 in. Dial Bore Gage Set (Tool Room) (Removal Cost: N/C)**

Lot #138 (Sale Order 138 of 700)

Starrett 3.000 in. - 5.187 in. Dial Bore Gage Set (Tool Room) (Removal Cost: N/C)

**Tongil 21/28 in. x 61 in. Model TIPL-5-530X1550 Gap Bed Lathe, S/N: 83037;**

Lot #142 (Sale Order 142 of 700)

Tongil 21/28 in. x 61 in. Model TIPL-5-530X1550 Gap Bed Lathe, S/N: 83037; with 22-1,600 RPM, 3-Jaw Chuck, Threading Dial, Inch/Metric Threading, Tooling &amp; Cabinet (No Dies or Fixtures) (Tool Room) (Removal Cost: \$450)

**Quick Change Tool Post, with (3) Tool Holders (Tool Room) (Removal Cost: N/**

Lot #143 (Sale Order 143 of 700)

Quick Change Tool Post, with (3) Tool Holders (Tool Room) (Removal Cost: N/C)

**Lot - Assorted Lathe Tooling (Tool Room) (Removal Cost: N/C)**

Lot #144 (Sale Order 144 of 700)

Lot - Assorted Lathe Tooling (Tool Room) (Removal Cost: N/C)

**Lot - 14 in. 4-Jaw Lathe Chuck, (2) Face Plates, Heavy Duty Cart (Tool Room**

Lot #145 (Sale Order 145 of 700)

Lot - 14 in. 4-Jaw Lathe Chuck, (2) Face Plates, Heavy Duty Cart (Tool Room) (Removal Cost: \$20)

**Tongil 15 in. x 42 in. Model TIPL-4 Engine Lathe, S/N: 005-2077; with 3-Jaw**

Lot #146 (Sale Order 146 of 700)

Tongil 15 in. x 42 in. Model TIPL-4 Engine Lathe, S/N: 005-2077; with 3-Jaw Chuck, 60-1,500 RPM, Cross Slide, Tail Stock (Tool Room) (Removal Cost: \$250)

**12 in. 4-Jaw Lathe Chuck (Tool Room) (Removal Cost: N/C)**

Lot #147 (Sale Order 147 of 700)

12 in. 4-Jaw Lathe Chuck (Tool Room) (Removal Cost: N/C)

**Quick Change Tool Post, with (6) Tool Holders (Tool Room) (Removal Cost: N/**

Lot #148 (Sale Order 148 of 700)

Quick Change Tool Post, with (6) Tool Holders (Tool Room) (Removal Cost: N/C)



**Lot - Assorted Face Plates (Tool Room) (Removal Cost: N/C)**

Lot #149 (Sale Order 149 of 700)

Lot - Assorted Face Plates (Tool Room) (Removal Cost: N/C)



**Lot - (7) Taper Shank Drill Bits (Tool Room) (Removal Cost: N/C)**

Lot #150 (Sale Order 150 of 700)

Lot - (7) Taper Shank Drill Bits (Tool Room) (Removal Cost: N/C)



**Lot - (10) Taper Shank Drill Bits (Tool Room) (Removal Cost: N/C)**

Lot #151 (Sale Order 151 of 700)

Lot - (10) Taper Shank Drill Bits (Tool Room) (Removal Cost: N/C)



**Lot - (5) Taper Shank Drill Bits (Tool Room) (Removal Cost: N/C)**

Lot #152 (Sale Order 152 of 700)

Lot - (5) Taper Shank Drill Bits (Tool Room) (Removal Cost: N/C)



**Lot - Taper Shank Drill Bits (Tool Room) (Removal Cost: N/C)**

Lot #153 (Sale Order 153 of 700)

Lot - Taper Shank Drill Bits (Tool Room) (Removal Cost: N/C)



**Tongil 9-1/2 in .x 16 in. Model TIPL MINI Engine Lathe, S/N: 25114; with Co**

Lot #154 (Sale Order 154 of 700)

Tongil 9-1/2 in .x 16 in. Model TIPL MINI Engine Lathe, S/N: 25114; with Collet Chuck, Cross Slide, Tail Stock (2nd Floor) (Removal Cost: \$150)



**Clausing 13 in. x 36 in. Engine Lathe, S/N: F3/61003; with Quick Change Tool**

Lot #155 (Sale Order 155 of 700)

Clausing 13 in. x 36 in. Engine Lathe, S/N: F3/61003; with Quick Change Tool Post, Cross Slide, Tail Stock, Change Gears (With Tool Post and Tool Holders) (2nd Floor) (Removal Cost: \$150)



**Dumore Model C6C34DZ Tool Post Grinder, S/N: 3616; 3,575 RPM (Tool Room) (R**

Lot #156 (Sale Order 156 of 700)

Dumore Model C6C34DZ Tool Post Grinder, S/N: 3616; 3,575 RPM (Tool Room) (Removal Cost: N/C)



**Dumore Model 44-110 Tool Post Grinder, with Case (Tool Room) (Removal Cost:**

Lot #157 (Sale Order 157 of 700)

Dumore Model 44-110 Tool Post Grinder, with Case (Tool Room) (Removal Cost: N/C)



**Kearney & Trecker/Milwaukee Model S-15 Universal Head Milling Machine, S/N:**

Lot #161 (Sale Order 161 of 700)

Kearney & Trecker/Milwaukee Model S-15 Universal Head Milling Machine, S/N: 5477150; with 15 in. x 76 in. Table, 25 to 2,000 RPM (10. in Machine Vise Not Included) (Tool Room) (Removal Cost: \$550)



**Baldor 6 in. Model 8-123W Double End Pedestal Grinder, S/N: G8P13 (Ref. #:**

Lot #162 (Sale Order 162 of 700)

Baldor 6 in. Model 8-123W Double End Pedestal Grinder, S/N: G8P13 (Ref. #: 21) (2nd Floor) (Removal Cost: \$25)



**Baldor 12 in. Double End Polisher/Buffer, S/N: 1067; with 3/4 in. Shaft (No**

Lot #163 (Sale Order 163 of 700)

Baldor 12 in. Double End Polisher/Buffer, S/N: 1067; with 3/4 in. Shaft (No Wheels Attached) (Ref. #: 22) (2nd Floor) (Removal Cost: \$25)



**Clausing 15 in. Model 1769 Tapping Machine, S/N: 526755; with Pneumatic Pow**

Lot #164 (Sale Order 164 of 700)

Clausing 15 in. Model 1769 Tapping Machine, S/N: 526755; with Pneumatic Power Feed, 12 in. x 18 in. Table (2nd Floor) (Removal Cost: \$25)

**Clausing 15 in. Model 1769 Drill Press, S/N: 526302; with 12 in. x 18 in. T**

Lot #165 (Sale Order 165 of 700)

Clausing 15 in. Model 1769 Drill Press, S/N: 526302; with 12 in. x 18 in. Table (2nd Floor) (Removal Cost: \$25)

**Rockwell Model 448 Tapping Machine, S/N: 1181 (2nd Floor) (Removal Cost: \$2**

Lot #166 (Sale Order 166 of 700)

Rockwell Model 448 Tapping Machine, S/N: 1181 (2nd Floor) (Removal Cost: \$25)

**Kearney & Trecker/Milwaukee Model S-12 307 Universal Head Milling Machine,**

Lot #167 (Sale Order 167 of 700)

Kearney &amp; Trecker/Milwaukee Model S-12 307 Universal Head Milling Machine, S/N: 80-1019-37; with 12 in. x 62 in. Table, 25 to 2,000 RPM (8 in. Machine Vise Not Included) (Tool Room) (Removal Cost: \$350)

**Barker Model PM Tool Grinder, S/N: 2065097; with Base Cabinet and Crafts Gr**

Lot #168 (Sale Order 168 of 700)

Barker Model PM Tool Grinder, S/N: 2065097; with Base Cabinet and Crafts Grinding Fixture (2nd Floor) (Removal Cost: \$50)

**Lars Model 375-4 Tool & Cutter Grinder, S/N: 78B75162 (2nd Floor) (Removal**

Lot #169 (Sale Order 169 of 700)

Lars Model 375-4 Tool &amp; Cutter Grinder, S/N: 78B75162 (2nd Floor) (Removal Cost: \$50)



**Lista 2-Door/6-Drawer Tool Cabinet (Cabinet E) (Ref. #: E) (2nd Floor) (Rem**

Lot #170 (Sale Order 170 of 700)

Lista 2-Door/6-Drawer Tool Cabinet (Cabinet E) (Ref. #: E) (2nd Floor) (Removal Cost: \$25)



**Lot - (3) Lista 6-Drawer Cabinets with Wood Tops (Cabinets B,C and D) (2nd**

Lot #171 (Sale Order 171 of 700)

Lot - (3) Lista 6-Drawer Cabinets with Wood Tops (Cabinets B,C and D) (2nd Floor) (Removal Cost: \$50)



**Lot - Enco 10 in. Bench Grinder and 12 in. Disc Sander, with Common Stand (**

Lot #172 (Sale Order 172 of 700)

Lot - Enco 10 in. Bench Grinder and 12 in. Disc Sander, with Common Stand (2nd Floor) (Removal Cost: \$25)



**Kearney & Trecker Model No. D Rotary Head Milling Machine, S/N: 2-7241; wit**

Lot #173 (Sale Order 173 of 700)

Kearney & Trecker Model No. D Rotary Head Milling Machine, S/N: 2-7241; with 16 in. x 30 in. Table, Anilam Wizard 211 Digital Read-Out, Holddown Set, 250 to 4,000 RPM (8 in. Machine Vise Not Included) (Tool Room) (Removal Cost: \$350)



**Schlegel Model EMF125 5 in. Bench Vise (2nd Floor) (Removal Cost: \$25)**

Lot #174 (Sale Order 174 of 700)

Schlegel Model EMF125 5 in. Bench Vise (2nd Floor) (Removal Cost: \$25)



**Schlegel Model EMF125 5 in. Bench Vise (2nd Floor) (Removal Cost: \$25)**

Lot #175 (Sale Order 175 of 700)

Schlegel Model EMF125 5 in. Bench Vise (2nd Floor) (Removal Cost: \$25)



**Schlegel Model EMF125 5 in. Bench Vise (2nd Floor) (Removal Cost: \$25)**

Lot #176 (Sale Order 176 of 700)

Schlegel Model EMF125 5 in. Bench Vise (2nd Floor) (Removal Cost: \$25)



**Lista 6-Drawer Tool Cabinet (Cabinet A) (2nd Floor) (Removal Cost: \$25)**

Lot #177 (Sale Order 177 of 700)

Lista 6-Drawer Tool Cabinet (Cabinet A) (2nd Floor) (Removal Cost: \$25)



**Lista 6-Drawer Tool Cabinet (Cabinet 7) (2nd Floor) (Removal Cost: \$25)**

Lot #178 (Sale Order 178 of 700)

Lista 6-Drawer Tool Cabinet (Cabinet 7) (2nd Floor) (Removal Cost: \$25)



**Kearney & Trecker Model 2D Rotary Head Milling Machine, S/N: 2D15100; with**

Lot #179 (Sale Order 179 of 700)

Kearney & Trecker Model 2D Rotary Head Milling Machine, S/N: 2D15100; with 16 in. x 36 in. Power Table Feed (with Manual Feed on Floor) (2nd Floor) (Removal Cost: \$450)



**Lista 6-Drawer Tool Cabinet (Cabinet K) (2nd Floor) (Removal Cost: \$25)**

Lot #180 (Sale Order 180 of 700)

Lista 6-Drawer Tool Cabinet (Cabinet K) (2nd Floor) (Removal Cost: \$25)



**Lista 6-Drawer Tool Cabinet (Cabinet L) (2nd Floor) (Removal Cost: \$25)**

Lot #181 (Sale Order 181 of 700)

Lista 6-Drawer Tool Cabinet (Cabinet L) (2nd Floor) (Removal Cost: \$25)

**Double Side Lighted Shop Table (2) 4 ft. Light Fixtures (2nd Floor) (Remov**

Lot #182 (Sale Order 182 of 700)

Double Side Lighted Shop Table (2) 4 ft. Light Fixtures (2nd Floor) (Removal Cost: \$50)

**Rockwell Model 65-000 Drill Press, S/N: 131771-2 (Ref. #: 11) (2nd Floor) (**

Lot #183 (Sale Order 183 of 700)

Rockwell Model 65-000 Drill Press, S/N: 131771-2 (Ref. #: 11) (2nd Floor) (Removal Cost: \$25)

**6 in. Vertical/Horizontal Belt Sander (Ref. #: 23) (2nd Floor) (Removal Cos**

Lot #184 (Sale Order 184 of 700)

6 in. Vertical/Horizontal Belt Sander (Ref. #: 23) (2nd Floor) (Removal Cost: \$25)

**Kearney & Trecker/Milwaukee Model No. 2 Rotary Head Milling Machine, S/N: 1**

Lot #185 (Sale Order 185 of 700)

Kearney &amp; Trecker/Milwaukee Model No. 2 Rotary Head Milling Machine, S/N: 12-8875; 16 in. x 30 in. Table, Bausch &amp; Lomb Acu-Rite II Digital Read-Out, Holddown Set, 250 to 4,000 RPM (Tool Room) (Removal Cost: \$250)

**Lot - Double Side Lighted Shop Table, with (2) 4 ft. Light Fixtures (2nd F**

Lot #186 (Sale Order 186 of 700)

Lot - Double Side Lighted Shop Table, with (2) 4 ft. Light Fixtures (2nd Floor) (Removal Cost: \$50)

**Portable Sump Cleaner (2nd Floor) (Removal Cost: \$50)**

Lot #187 (Sale Order 187 of 700)

Portable Sump Cleaner (2nd Floor) (Removal Cost: \$50)



**Kalamazoo 12 in. Disc Grinder/Sander, with Stand (2nd Floor) (Removal Cost:**

Lot #188 (Sale Order 188 of 700)

Kalamazoo 12 in. Disc Grinder/Sander, with Stand (2nd Floor) (Removal Cost: \$25)



**Kearney & Trecker Milling Machine Collets, in (1) Box (Tool Room) (Removal**

Lot #189 (Sale Order 189 of 700)

Kearney & Trecker Milling Machine Collets, in (1) Box (Tool Room) (Removal Cost: N/C)



**Nomura 4 in. Model B-100SR Table Type Horizontal Boring Mill, S/N: 3815; wi**

Lot #195 (Sale Order 195 of 700)

Nomura 4 in. Model B-100SR Table Type Horizontal Boring Mill, S/N: 3815; with 45 in. x 50 in. Table, Allen-Bradley Mdl. 8400MP Controls, 30 in. x 40 in. x 30 in. Box Table, 54 in. (approx.) Vertical Travels, 21 to 1,200 RPM, Quick Change Tooling (Tool Room) (Removal Cost: \$2500)



**Lot - BT-50 Tool Holders and Cutters, with Rack (Tool Room) (Removal Cost:**

Lot #195A (Sale Order 195 of 700)

Lot - BT-50 Tool Holders and Cutters, with Rack (Tool Room) (Removal Cost: N/C)



**Lot - BT-50 Tool Holders and Cutters, with Rack (Tool Room) (Removal Cost:**

Lot #195B (Sale Order 195 of 700)

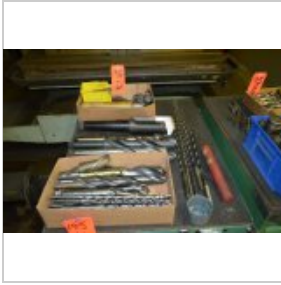
Lot - BT-50 Tool Holders and Cutters, with Rack (Tool Room) (Removal Cost: N/C)



**Lot - Quick Change Tooling and Cutters (Tool Room) (Removal Cost: N/C)**

Lot #195C (Sale Order 195 of 700)

Lot - Quick Change Tooling and Cutters (Tool Room) (Removal Cost: N/C)



**Lot - Drill Bits and End Mills (Tool Room) (Removal Cost: N/C)**

Lot #195D (Sale Order 195 of 700)

Lot - Drill Bits and End Mills (Tool Room) (Removal Cost: N/C)



**Lot - End Mills (Tool Room) (Removal Cost: N/C)**

Lot #195E (Sale Order 195 of 700)

Lot - End Mills (Tool Room) (Removal Cost: N/C)



**Lot - Sliding Door/10-Drawer Tool Cabinet, Misc. Contents (Tool Room) (Remo**

Lot #195F (Sale Order 195 of 700)

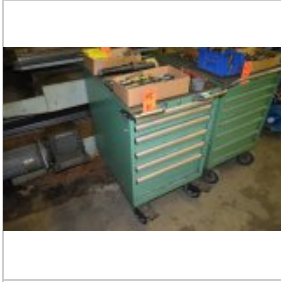
Lot - Sliding Door/10-Drawer Tool Cabinet, Misc. Contents (Tool Room) (Removal Cost: \$50)



**Lista 6-Drawer Portable Tool Cabinet (Tool Room) (Removal Cost: \$25)**

Lot #195G (Sale Order 195 of 700)

Lista 6-Drawer Portable Tool Cabinet (Tool Room) (Removal Cost: \$25)



**Lista 6-Drawer Portable Tool Cabinet (Tool Room) (Removal Cost: \$25)**

Lot #195H (Sale Order 195 of 700)

Lista 6-Drawer Portable Tool Cabinet (Tool Room) (Removal Cost: \$25)



**6-Drawer Portable Tool Cabinet (Locked Contents Unknown) (Tool Room) (Remov**

Lot #195I (Sale Order 195 of 700)

6-Drawer Portable Tool Cabinet (Locked Contents Unknown) (Tool Room) (Removal Cost: N/C)



**Narex Universal Boring Tool Set (BT50 Arbor) (Tool Room) (Removal Cost: N/C)**

Lot #195J (Sale Order 195 of 700)

Narex Universal Boring Tool Set (BT50 Arbor) (Tool Room) (Removal Cost: N/C)



**Clausing 2-Head Model 2285 Drilling/Tapping Machine, S/N's: 528144 & 528145**

Lot #196 (Sale Order 196 of 700)

Clausing 2-Head Model 2285 Drilling/Tapping Machine, S/N's: 528144 & 528145; with 24 in. x 40 in. Production Table (CNC Room) (Removal Cost: \$100)



**Clausing 2-Head Model 1763 Tapping Machine, S/N: 124891; with Procunier Tap**

Lot #197 (Sale Order 197 of 700)

Clausing 2-Head Model 1763 Tapping Machine, S/N: 124891; with Procunier Tapping Heads (No Fixtures) (Vibratory Finishing Room) (Removal Cost: \$150)



**Dial Machine Drilling & Tapping Machine, 5-Stations with (1) Discharge Stat**

Lot #198 (Sale Order 198 of 700)

Dial Machine Drilling & Tapping Machine, 5-Stations with (1) Discharge Station, Dial Base, Assorted Drill/Tapping Heads, on Pallets (Vibratory Finishing Room) (Removal Cost: \$200)



**Synchro 2-Head Model TCB-2U Horizontal Tapper, S/N's: 451402 & 451498 (2nd**

Lot #199 (Sale Order 199 of 700)

Synchro 2-Head Model TCB-2U Horizontal Tapper, S/N's: 451402 & 451498 (2nd Floor) (Removal Cost: \$100)



**Heckert 4 ft. Arm x 11 in. Column Radial Arm Drill, S/N: 752525; with 22 in**

Lot #200 (Sale Order 200 of 700)

Heckert 4 ft. Arm x 11 in. Column Radial Arm Drill, S/N: 752525; with 22 in. x 22 in. x 22 in. Riser Table, Power Clamping, Power Elevation, 13 to 1,200 RPM (Tool Room) (Removal Cost: \$300)



**Procunier 2-Head Model 3 Vertical Tapping Machine, S/N: B-8763; with 4-Posi**

Lot #201 (Sale Order 201 of 700)

Procunier 2-Head Model 3 Vertical Tapping Machine, S/N: B-8763; with 4-Position Rotary Table (No Fixtures) (2nd Floor) (Removal Cost: \$150)



**Reynolds Model 355EHS Tapping Unit (2nd Floor) (Removal Cost: \$100)**

Lot #202 (Sale Order 202 of 700)

Reynolds Model 355EHS Tapping Unit (2nd Floor) (Removal Cost: \$100)



**Clausing Model 2234 Drilling & Milling Machine, S/N: 107624; 30 in x 30 in.**

Lot #203 (Sale Order 203 of 700)

Clausing Model 2234 Drilling & Milling Machine, S/N: 107624; 30 in x 30 in. (2nd Floor) (Removal Cost: \$100)



**38 in. x 80 in. Steel Machine Table (2nd Floor) (Removal Cost: \$25)**

Lot #204 (Sale Order 204 of 700)

38 in. x 80 in. Steel Machine Table (2nd Floor) (Removal Cost: \$25)



**Heckert 4 ft. Arm x 11 in. Column Radial Arm Drill, S/N: 752461; with 22 in**

Lot #205 (Sale Order 205 of 700)

Heckert 4 ft. Arm x 11 in. Column Radial Arm Drill, S/N: 752461; with 22 in. x 22 in. x 22 in. Riser Table, Power Clamping, Power Elevation, 13 to 1,200 RPM (Tool Room) (Removal Cost: \$300)



**Lot - (3) Delta Model 15-000 Drill Heads, S/N's: 1358382, 1353926 & 1353927**

Lot #206 (Sale Order 206 of 700)

Lot - (3) Delta Model 15-000 Drill Heads, S/N's: 1358382, 1353926 & 1353927 (2nd Floor) (Removal Cost: \$25)



**Lot - (1) Delta Model 15-000 Drill Head, S/N: 1358382; and (1) HyPneuMat Dr**

Lot #207 (Sale Order 207 of 700)

Lot - (1) Delta Model 15-000 Drill Head, S/N: 1358382; and (1) HyPneuMat Drill/Tapping Head, S/N: 1363926 (2nd Floor) (Removal Cost: \$25)

**Lot - (2) Drill Heads (2nd Floor) (Removal Cost: \$25)**

Lot #208 (Sale Order 208 of 700)

Lot - (2) Drill Heads (2nd Floor) (Removal Cost: \$25)

**SGM Drilling & Tapping Station, S/N: 89111072; with 21 in. Vibratory Bowl F**

Lot #209 (Sale Order 209 of 700)

SGM Drilling &amp; Tapping Station, S/N: 89111072; with 21 in. Vibratory Bowl Feeder, 7 in. Power Chip Conveyor (No Fixtures) (CNC Room) (Removal Cost: \$100)

**Marvel Model Series 8 Mark II Vertical Bandsaw, S/N: 820216 (Grinding Room)**

Lot #210 (Sale Order 210 of 700)

Marvel Model Series 8 Mark II Vertical Bandsaw, S/N: 820216 (Grinding Room) (Removal Cost: \$200)

**Lot - Assorted Clamps (Grinding Room) (Removal Cost: N/C)**

Lot #211 (Sale Order 211 of 700)

Lot - Assorted Clamps (Grinding Room) (Removal Cost: N/C)

**Lot - (2) Zinc Blue Threaded Rods, 1-1/4 in. x 12 x 36 in. (Grinding Room)**

Lot #212 (Sale Order 212 of 700)

Lot - (2) Zinc Blue Threaded Rods, 1-1/4 in. x 12 x 36 in. (Grinding Room) (Removal Cost: N/C)

**24 in. x 28 in. Heavy Duty Die Cart (Grinding Room) (Removal Cost: N/C)**

Lot #213 (Sale Order 213 of 700)

24 in. x 28 in. Heavy Duty Die Cart (Grinding Room) (Removal Cost: N/C)

**24 in. x 28 in. Heavy Duty Die Cart (Grinding Room) (Removal Cost: N/C)**

Lot #214 (Sale Order 214 of 700)

24 in. x 28 in. Heavy Duty Die Cart (Grinding Room) (Removal Cost: N/C)

**DoAll 26 in. Model 2612-1H3 Vertical Bandsaw, S/N: 362-90215; with 32 in. x**

Lot #215 (Sale Order 215 of 700)

DoAll 26 in. Model 2612-1H3 Vertical Bandsaw, S/N: 362-90215; with 32 in. x 40 in. Table, 184 in. Blade Length, 3-Phase, 480-V, 60-Hz (Vibratory Finishing Room) (Removal Cost: \$200)

**Chicago 20-Gal. Capacity Parts Washer (Vibratory Finishing Room) (Removal C**

Lot #216 (Sale Order 216 of 700)

Chicago 20-Gal. Capacity Parts Washer (Vibratory Finishing Room) (Removal Cost: \$20)

**60 in. x 8 in. Power Conveyor (Vibratory Finishing Room) (Removal Cost: \$20**

Lot #217 (Sale Order 217 of 700)

60 in. x 8 in. Power Conveyor (Vibratory Finishing Room) (Removal Cost: \$20)

**Baldor 6 in. Model 8107WD Double End Pedestal Grinder, S/N: F690 (Vibratory**

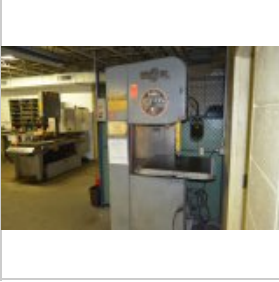
Lot #218 (Sale Order 218 of 700)

Baldor 6 in. Model 8107WD Double End Pedestal Grinder, S/N: F690 (Vibratory Finishing Room) (Removal Cost: \$25)

**Cement Mixer (Sold - Subject to Approval) (Vibratory Finishing Room) (Remov**

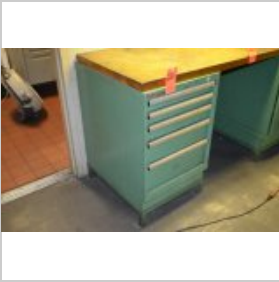
Lot #219 (Sale Order 219 of 700)

Cement Mixer (Sold - Subject to Approval) (Vibratory Finishing Room) (Removal Cost: \$25)

**DoAll 20 in. Model 2013-V Vertical Bandsaw, S/N: 457-88765; with 25-1/2 in.**

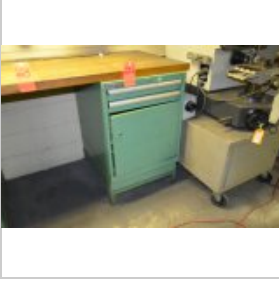
Lot #220 (Sale Order 220 of 700)

DoAll 20 in. Model 2013-V Vertical Bandsaw, S/N: 457-88765; with 25-1/2 in. x 25-1/2 Table, 154 in. Blade Length (Grinding Room) (Removal Cost: \$100)

**Lista 5-Drawer Tool Cabinet, with Assorted Hardware and Misc. (Ref. #: Cabi**

Lot #221 (Sale Order 221 of 700)

Lista 5-Drawer Tool Cabinet, with Assorted Hardware and Misc. (Ref. #: Cabinet Q) (Grinding Room) (Removal Cost: \$25)

**Lista 2-Drawer/Single Door Tool Cabinet, with Assorted Hardware and Misc. (**

Lot #222 (Sale Order 222 of 700)

Lista 2-Drawer/Single Door Tool Cabinet, with Assorted Hardware and Misc. (Ref. #: Cabinet R) (Grinding Room) (Removal Cost: \$25)

**28 in. x 72 in. Wood Bench Top (No Cabinets) (Grinding Room) (Removal Cost:**

Lot #223 (Sale Order 223 of 700)

28 in. x 72 in. Wood Bench Top (No Cabinets) (Grinding Room) (Removal Cost: \$25)

**24 in. x 36 in. Adjustable Height Die Cart (No Contents) (Grinding Room) (R**

Lot #224 (Sale Order 224 of 700)

24 in. x 36 in. Adjustable Height Die Cart (No Contents) (Grinding Room) (Removal Cost: N/C)



**Startrite/Meba Horizontal Metal Cutting Bandsaw, S/N: 3253 (Small Room in W**

Lot #224A (Sale Order 224 of 700)

Startrite/Meba Horizontal Metal Cutting Bandsaw, S/N: 3253 (Small Room in Whse) (Removal Cost: \$50)



**Jet 10 in. Model CTAS-10-1 Tilting Arbor Table Saw, S/N: 830224 (2nd Floor)**

Lot #225 (Sale Order 225 of 700)

Jet 10 in. Model CTAS-10-1 Tilting Arbor Table Saw, S/N: 830224 (2nd Floor) (Removal Cost: \$50)



**Wells Model 58B Horizontal Metalcutting Band Saw (2nd Floor) (Removal Cost:**

Lot #225A (Sale Order 225 of 700)

Wells Model 58B Horizontal Metalcutting Band Saw (2nd Floor) (Removal Cost: \$50)



**Gallmeyer & Livingston Model 470 Hydraulic Surface Grinder, S/N: 470144; wi**

Lot #226 (Sale Order 226 of 700)

Gallmeyer & Livingston Model 470 Hydraulic Surface Grinder, S/N: 470144; with 12 in. x 24 in. Magnetic Chuck, Incremental Feed (Tool Room) (Removal Cost: \$300)



**Lot - Hydraulic Pump Cartridges (Tool Room) (Removal Cost: \$25)**

Lot #227 (Sale Order 227 of 700)

Lot - Hydraulic Pump Cartridges (Tool Room) (Removal Cost: \$25)



**24 in. x 28 in. Heavy Duty Die Cart (Tool Room) (Removal Cost: N/C)**

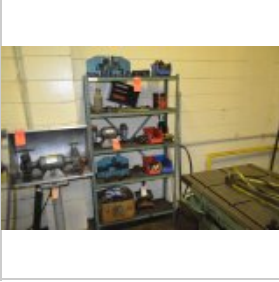
Lot #228 (Sale Order 228 of 700)

24 in. x 28 in. Heavy Duty Die Cart (Tool Room) (Removal Cost: N/C)

**Lot - Floor Mats (Tool Room) (Removal Cost: \$10)**

Lot #229 (Sale Order 229 of 700)

Lot - Floor Mats (Tool Room) (Removal Cost: \$10)

**Lot - Shelf Unit, with Contents (No Bench Vise, Dies, or Fixtures) (Tool Ro**

Lot #230 (Sale Order 230 of 700)

Lot - Shelf Unit, with Contents (No Bench Vise, Dies, or Fixtures) (Tool Room) (Removal Cost: \$50)

**Gallmeyer & Livingston Model 373 Hydraulic Surface Grinder, S/N: 373383; wi**

Lot #231 (Sale Order 231 of 700)

Gallmeyer &amp; Livingston Model 373 Hydraulic Surface Grinder, S/N: 373383; with 12 in. x 24 in. Electromagnetic Chuck, Incremental Feed, Coolant System (Tool Room) (Removal Cost: \$250)

**30 in. x 60 in. Heavy Duty Die Cart (No Dies or Fixtures) (Tool Room) (Remo**

Lot #232 (Sale Order 232 of 700)

30 in. x 60 in. Heavy Duty Die Cart (No Dies or Fixtures) (Tool Room) (Removal Cost: N/C)

**30 in. x 72 in. Shop Table (No Dies or Fixtures) (Tool Room) (Removal Cost:**

Lot #233 (Sale Order 233 of 700)

30 in. x 72 in. Shop Table (No Dies or Fixtures) (Tool Room) (Removal Cost: \$25)

**24 in. x 36 in. Adjustable Height Die Cart (No Contents) (Tool Room) (Remov**

Lot #234 (Sale Order 234 of 700)

24 in. x 36 in. Adjustable Height Die Cart (No Contents) (Tool Room) (Removal Cost: N/C)



**28 in. x 30 in. Shop Cart (No Contents) (Tool Room) (Removal Cost: N/C)**

Lot #235 (Sale Order 235 of 700)

28 in. x 30 in. Shop Cart (No Contents) (Tool Room) (Removal Cost: N/C)



**Boyar-Schultz 6 in. x 12 in. Model 612 Surface Grinder, S/N: 18172; with 6**

Lot #236 (Sale Order 236 of 700)

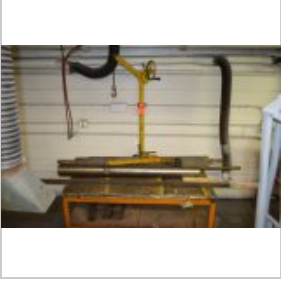
Boyar-Schultz 6 in. x 12 in. Model 612 Surface Grinder, S/N: 18172; with 6 in. x 12 in. Magnetic Sine Chuck, Anilam Micro-Wizard Digital Read-Out (Grinding Room) (Removal Cost: \$100)



**Custom Downdraft Sanding Table (Grinding Room) (Removal Cost: \$25)**

Lot #237 (Sale Order 237 of 700)

Custom Downdraft Sanding Table (Grinding Room) (Removal Cost: \$25)



**Lot - (2) Syclone Products Sky Hook Hoists, with 36 in. x 60 in. Die Table**

Lot #238 (Sale Order 238 of 700)

Lot - (2) Syclone Products Sky Hook Hoists, with 36 in. x 60 in. Die Table (No Inventory) (Grinding Room) (Removal Cost: \$50)



**24 in. x 36 in. Adjustable Height Die Cart (No Contents) (Grinding Room) (R**

Lot #239 (Sale Order 239 of 700)

24 in. x 36 in. Adjustable Height Die Cart (No Contents) (Grinding Room) (Removal Cost: N/C)



**Lista 2-Door/10-Drawer Tool Storage Cabinet, with Contents of Drawers (Grin**

Lot #240 (Sale Order 240 of 700)

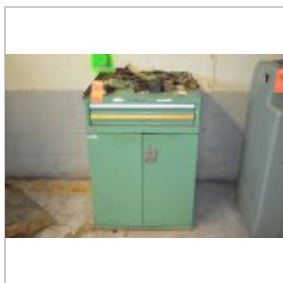
Lista 2-Door/10-Drawer Tool Storage Cabinet, with Contents of Drawers (Grinding Room) (Removal Cost: \$50)



**Gallmeyer & Livingston 6 in. x 18 in. Model 20 Surface Grinder, S/N: 20404**

Lot #241 (Sale Order 241 of 700)

Gallmeyer & Livingston 6 in. x 18 in. Model 20 Surface Grinder, S/N: 20404 (2nd Floor) (Removal Cost: \$100)



**Lista 2-Door/6-Drawer Tool Cabinet, with Contents (Ref. #: Q) (2nd Floor) (**

Lot #242 (Sale Order 242 of 700)

Lista 2-Door/6-Drawer Tool Cabinet, with Contents (Ref. #: Q) (2nd Floor) (Removal Cost: \$25)



**Miller Model 300A/BP Arc Welder, S/N: JC625371 (2nd Floor) (Removal Cost: \$**

Lot #243 (Sale Order 243 of 700)

Miller Model 300A/BP Arc Welder, S/N: JC625371 (2nd Floor) (Removal Cost: \$25)



**Lincoln Model V300-PRO Electric Invertec Tig Welder (2nd Floor) (Removal Co**

Lot #244 (Sale Order 244 of 700)

Lincoln Model V300-PRO Electric Invertec Tig Welder (2nd Floor) (Removal Cost: \$25)



**Lot - 36-Volt, 25-Amp Battery Charger, and Die Lift Cart (Lift Mechanism Mi**

Lot #245 (Sale Order 245 of 700)

Lot - 36-Volt, 25-Amp Battery Charger, and Die Lift Cart (Lift Mechanism Missing) (2nd Floor) (Removal Cost: \$25)



**Harig 6 in. x 12 in. Model 612 Surface Grinder, S/N: 17650; with Acu-Rite D**

Lot #246 (Sale Order 246 of 700)

Harig 6 in. x 12 in. Model 612 Surface Grinder, S/N: 17650; with Acu-Rite Digital Read-Out, 6 in. x 12 in. Magnetic Sine Chuck (Needs Oil Pump) (Tool Room) (Removal Cost: \$100)



**Lot - (2) Losma Model D-1200 Air Cleaners (2nd Floor) (Removal Cost: \$25)**

Lot #247 (Sale Order 247 of 700)

Lot - (2) Losma Model D-1200 Air Cleaners (2nd Floor) (Removal Cost: \$25)



**Lot - (3) Cabinets, to Include: (2) 2-Door Storage Cabinets and (1) 4-Door**

Lot #248 (Sale Order 248 of 700)

Lot - (3) Cabinets, to Include: (2) 2-Door Storage Cabinets and (1) 4-Door Locker (2nd Floor) (Removal Cost: \$25)



**Lot - (2) Lista Assorted 17 & 14-Drawer Tool Cabinets (Ref. #: 16 & 17) (2n**

Lot #249 (Sale Order 249 of 700)

Lot - (2) Lista Assorted 17 & 14-Drawer Tool Cabinets (Ref. #: 16 & 17) (2nd Floor) (Removal Cost: \$100)



**Sterling Model DG Drill Bit Sharpener, S/N: DG6426 (Tool Room) (Removal Cos**

Lot #250 (Sale Order 250 of 700)

Sterling Model DG Drill Bit Sharpener, S/N: DG6426 (Tool Room) (Removal Cost: \$25)



**Harig 6 in. x 12 in. Model Super 612 Surface Grinder, S/N: 10354; with Acu-**

Lot #251 (Sale Order 251 of 700)

Harig 6 in. x 12 in. Model Super 612 Surface Grinder, S/N: 10354; with Acu-Rite Digital Read-Out, 6 in. x 12 in. Magnetic Sine Chuck (Needs Oil Pump) (Tool Room) (Removal Cost: \$100)



**Lista 2-Door/6-Drawer Tool Storage Cabinet (No Dies or Fixtures)(Ref. #: R)**

Lot #252 (Sale Order 252 of 700)

Lista 2-Door/6-Drawer Tool Storage Cabinet (No Dies or Fixtures)(Ref. #: R) (2nd Floor) (Removal Cost: \$25)



**Lista 2-Door/6-Drawer Tool Storage Cabinet (No Dies or Fixtures) (Ref. #: O)**

Lot #253 (Sale Order 253 of 700)

Lista 2-Door/6-Drawer Tool Storage Cabinet (No Dies or Fixtures) (Ref. #: O) (2nd Floor) (Removal Cost: \$25)

**Portable 5-Drawer Tool Cabinet (No Dies or Fixtures) (2nd Floor) (Removal C**

Lot #254 (Sale Order 254 of 700)

Portable 5-Drawer Tool Cabinet (No Dies or Fixtures) (2nd Floor) (Removal Cost: \$25)

**Portable 7-Drawer Tool Cabinet (No Dies or Fixtures) (2nd Floor) (Removal C**

Lot #255 (Sale Order 255 of 700)

Portable 7-Drawer Tool Cabinet (No Dies or Fixtures) (2nd Floor) (Removal Cost: \$25)

**Clausing Model 4002 Surface Grinder, S/N: 7B-7665; with 6 in. x 12 in. Elec**

Lot #256 (Sale Order 256 of 700)

Clausing Model 4002 Surface Grinder, S/N: 7B-7665; with 6 in. x 12 in. Electromagnetic Chuck (Tool Room) (Removal Cost: \$75)

**Lot - Aluminum Fixtures, Parts Etc., on (3) Pallets (No Fixtures) (2nd Floo**

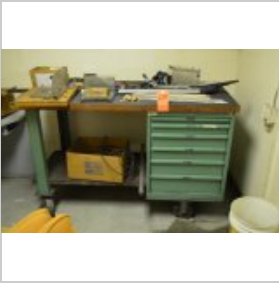
Lot #257 (Sale Order 257 of 700)

Lot - Aluminum Fixtures, Parts Etc., on (3) Pallets (No Fixtures) (2nd Floor) (Removal Cost: \$50)

**Star-Y-Connection 20-HP Model 40586 VEU-HV Drive Motor, S/N: 0703109RB; 460**

Lot #258 (Sale Order 258 of 700)

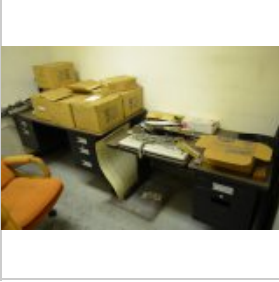
Star-Y-Connection 20-HP Model 40586 VEU-HV Drive Motor, S/N: 0703109RB; 460 to 2,800 RPM, 230/460V (2nd Floor) (Removal Cost: \$25)



**Lista Portable Shop Table/6-Drawer Tool Cabinet (2nd Floor) (Removal Cost:**

Lot #259 (Sale Order 259 of 700)

Lista Portable Shop Table/6-Drawer Tool Cabinet (2nd Floor) (Removal Cost: \$25)



**Lot - Assorted Office Furniture in 2nd Floor Training Office (Lista Shop Ta**

Lot #260 (Sale Order 260 of 700)

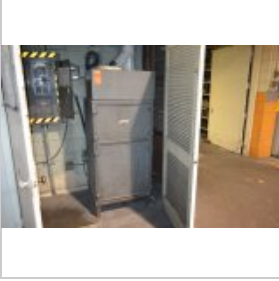
Lot - Assorted Office Furniture in 2nd Floor Training Office (Lista Shop Table Not Included) (2nd Floor) (Removal Cost: \$100)



**Harig Surface Grinder, S/N: 15804 (No Chuck) (2nd Floor) (Removal Cost: \$10**

Lot #261 (Sale Order 261 of 700)

Harig Surface Grinder, S/N: 15804 (No Chuck) (2nd Floor) (Removal Cost: \$100)



**Torit Dust Collector, with Related Dust Pipe in Grinding Room (Grinding Roo**

Lot #262 (Sale Order 262 of 700)

Torit Dust Collector, with Related Dust Pipe in Grinding Room (Grinding Room) (Removal Cost: \$100)



**D-M-E Model PPC750 Pin Cut-Off/Grinding Machine, S/N: NA-0326 (Tool Room) (**

Lot #263 (Sale Order 263 of 700)

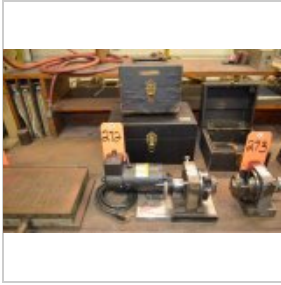
D-M-E Model PPC750 Pin Cut-Off/Grinding Machine, S/N: NA-0326 (Tool Room) (Removal Cost: \$50)



**8 in. x 15 in. Permanent Magnetic Chuck (Grinding Room) (Removal Cost: N/C)**

Lot #271 (Sale Order 271 of 700)

8 in. x 15 in. Permanent Magnetic Chuck (Grinding Room) (Removal Cost: N/C)



**Harig Grind-All No. 1 Grinding Fixture, with Motor Drive, (2) Cases (Grind**

Lot #272 (Sale Order 272 of 700)

Harig Grind-All No. 1 Grinding Fixture, with Motor Drive, (2) Cases (Grinding Room) (Removal Cost: N/C)



**Harig Grind-All No. 1 Grinding Fixture, with Case (Grinding Room) (Removal**

Lot #273 (Sale Order 273 of 700)

Harig Grind-All No. 1 Grinding Fixture, with Case (Grinding Room) (Removal Cost: N/C)



**Hardinge 5-C Collet Spin Index Grinding Fixture (Grinding Room) (Removal Co**

Lot #274 (Sale Order 274 of 700)

Hardinge 5-C Collet Spin Index Grinding Fixture (Grinding Room) (Removal Cost: N/C)



**Harig Air-Flo Grinding Fixture, for End Mills and Mill Cutters, with Case**

Lot #275 (Sale Order 275 of 700)

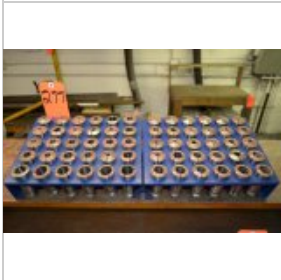
Harig Air-Flo Grinding Fixture, for End Mills and Mill Cutters, with Case (Grinding Room) (Removal Cost: N/C)



**Die Pin Truing Fixture (Grinding Room) (Removal Cost: N/C)**

Lot #276 (Sale Order 276 of 700)

Die Pin Truing Fixture (Grinding Room) (Removal Cost: N/C)



**Lot - 5-C Collets, in (2) Indexes (Grinding Room) (Removal Cost: N/C)**

Lot #277 (Sale Order 277 of 700)

Lot - 5-C Collets, in (2) Indexes (Grinding Room) (Removal Cost: N/C)



**Lot - 5-C Collets, in (1) Index (Grinding Room) (Removal Cost: N/C)**

Lot #278 (Sale Order 278 of 700)

Lot - 5-C Collets, in (1) Index (Grinding Room) (Removal Cost: N/C)



**Radius Wheel Dresser, with Case (Grinding Room) (Removal Cost: N/C)**

Lot #279 (Sale Order 279 of 700)

Radius Wheel Dresser, with Case (Grinding Room) (Removal Cost: N/C)



**Radius Wheel Dresser, with Case (Grinding Room) (Removal Cost: N/C)**

Lot #280 (Sale Order 280 of 700)

Radius Wheel Dresser, with Case (Grinding Room) (Removal Cost: N/C)



**Lot - (2) Wheel Dressers, to Include: (1) Reliance Radius Dresser, and (1)**

Lot #281 (Sale Order 281 of 700)

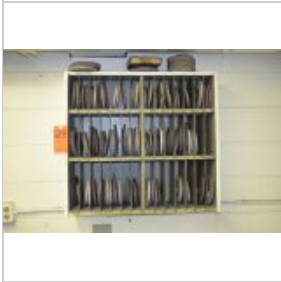
Lot - (2) Wheel Dressers, to Include: (1) Reliance Radius Dresser, and (1) Newbould Tool Hi-Lo Dresser (Grinding Room) (Removal Cost: N/C)



**Electro-Matic Demagnetizer (Grinding Room) (Removal Cost: N/C)**

Lot #282 (Sale Order 282 of 700)

Electro-Matic Demagnetizer (Grinding Room) (Removal Cost: N/C)



**Lot - Surface Grinder Wheels, with Wall Rack (Grinding Room) (Removal Cost:**

Lot #283 (Sale Order 283 of 700)

Lot - Surface Grinder Wheels, with Wall Rack (Grinding Room) (Removal Cost: \$50)

**Speedline Industries Grinder Attachment, with Case (Grinding Room) (Removal)**

Lot #284 (Sale Order 284 of 700)

Speedline Industries Grinder Attachment, with Case (Grinding Room) (Removal Cost: N/C)

**6 in. Round Magnetic Chuck (Tool Room) (Removal Cost: N/C)**

Lot #285 (Sale Order 285 of 700)

6 in. Round Magnetic Chuck (Tool Room) (Removal Cost: N/C)

**Boyar-Schultz 4 in. Model 4 Vise (Grinding Room) (Removal Cost: \$10)**

Lot #286 (Sale Order 286 of 700)

Boyar-Schultz 4 in. Model 4 Vise (Grinding Room) (Removal Cost: \$10)

**Lot - (3) Coolant Spray Misters (Grinding Room) (Removal Cost: \$10)**

Lot #287 (Sale Order 287 of 700)

Lot - (3) Coolant Spray Misters (Grinding Room) (Removal Cost: \$10)

**6 in. x 12 in. Permanent Magnetic Chuck (Grinding Room) (Removal Cost: N/C)**

Lot #288 (Sale Order 288 of 700)

6 in. x 12 in. Permanent Magnetic Chuck (Grinding Room) (Removal Cost: N/C)

**Ingersoll Model GANTRY 500 Gantry Type EDM Machine, S/N: 573042; with 3R To**

Lot #291 (Sale Order 291 of 700)

Ingersoll Model GANTRY 500 Gantry Type EDM Machine, S/N: 573042; with 3R Tooling, Remcor Chiller, Multipulse Controls, (2) 8 in. x 18 in. Magnetic Chucks, 20-Positioner Tool Changer, Cabinet &amp; Tooling, (Tool Room) (Removal Cost: \$500)



**Lot - EDM Tooling with Lista 2-Door/6-Drawer Tool Cabinet (No Machine Manua**

Lot #292 (Sale Order 292 of 700)

Lot - EDM Tooling with Lista 2-Door/6-Drawer Tool Cabinet (No Machine Manuals) (Tool Room) (Removal Cost: \$50)



**Lot - System 3R Starter Kit EDM Tooling, with Case (Tool Room) (Removal Cos**

Lot #293 (Sale Order 293 of 700)

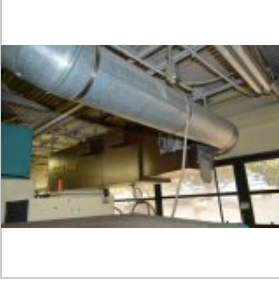
Lot - System 3R Starter Kit EDM Tooling, with Case (Tool Room) (Removal Cost: N/C)



**36 in. x 66 in. Shop Table (No EDM Tooling) (Tool Room) (Removal Cost: \$50)**

Lot #294 (Sale Order 294 of 700)

36 in. x 66 in. Shop Table (No EDM Tooling) (Tool Room) (Removal Cost: \$50)



**Smog Hog Fume and Dust Collector (Behind Lot 291) (Tool Room) (Removal Cost**

Lot #295 (Sale Order 295 of 700)

Smog Hog Fume and Dust Collector (Behind Lot 291) (Tool Room) (Removal Cost: \$250)



**Phase II 4 in. x 7 in. Demagnetizer (Tool Room) (Removal Cost: N/C)**

Lot #296 (Sale Order 296 of 700)

Phase II 4 in. x 7 in. Demagnetizer (Tool Room) (Removal Cost: N/C)



**Charmilles Model ROBOFIL 300/310 CNC Wire EDM Machine, S/N: 22260 (1992); w**

Lot #299 (Sale Order 299 of 700)

Charmilles Model ROBOFIL 300/310 CNC Wire EDM Machine, S/N: 22260 (1992); with Related Tooling & Cabinet (Tool Room) (Removal Cost: \$450)



**Haas Model DT-1 CNC Drilling/Tapping Machining Center, S/N: 1104746 (2013);**

Lot #301 (Sale Order 301 of 700)

Haas Model DT-1 CNC Drilling/Tapping Machining Center, S/N: 1104746 (2013); 15,000 RPM Spindle Speed, 15-HP, 15 in. x 26 in. Table, 20-Position Automatic Tool Changer, 2,400-IPM, Travels: X-Axis 20 in, Y-Axis 16 in, Z-Axis 15.5 in, CNC Controls, BT30 Taper, Auger Chip Conveyor, Auto Air Gun, Renishaw Wireless Tool Setting Probe, Related Transformer (Ref. #: #6) (CNC Room) (Removal Cost: \$400)



**21 in. x 21 in. Shop Stand (CNC Room) (Removal Cost: N/C)**

Lot #302 (Sale Order 302 of 700)

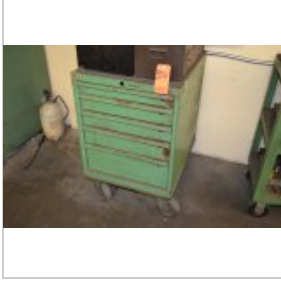
21 in. x 21 in. Shop Stand (CNC Room) (Removal Cost: N/C)



**18 in. x 34 in. 3-Tier Shop Cart (No Contents) (CNC Room) (Removal Cost: N/**

Lot #303 (Sale Order 303 of 700)

18 in. x 34 in. 3-Tier Shop Cart (No Contents) (CNC Room) (Removal Cost: N/C)



**Lista 5-Drawer Tool Cabinet, with Contents (CNC Room) (Removal Cost: \$25)**

Lot #304 (Sale Order 304 of 700)

Lista 5-Drawer Tool Cabinet, with Contents (CNC Room) (Removal Cost: \$25)



**Haas Model DT-1 CNC Drilling/Tapping Machining Center, S/N: 1084881 (2011);**

Lot #311 (Sale Order 311 of 700)

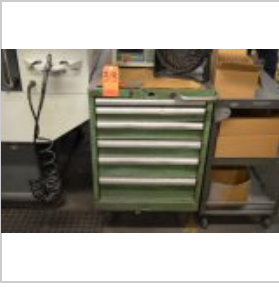
Haas Model DT-1 CNC Drilling/Tapping Machining Center, S/N: 1084881 (2011); 15,000 RPM Spindle Speed, 15-HP, 15 in. x 26 in. Table, 20-Position Automatic Tool Changer, 2,400-IPM, Travels: X-Axis 20 in, Y-Axis 16 in, Z-Axis 15.5 in, CNC Controls, BT30 Taper, Auger Chip Conveyor, Auto Air Gun, Renishaw Wireless Tool Setting Probe, Related Transformer (Tsudakoma 4-Axis Indexer Not Included) (Ref. #: #5) (CNC Room) (Removal Cost: \$400)



**18 in. x 18 in. Shop Stand (CNC Room) (Removal Cost: N/C)**

Lot #312 (Sale Order 312 of 700)

18 in. x 18 in. Shop Stand (CNC Room) (Removal Cost: N/C)

**Lista 6-Drawer Portable Tool Cabinet (No Dies or Fixtures) (CNC Room) (Remo**

Lot #313 (Sale Order 313 of 700)

Lista 6-Drawer Portable Tool Cabinet (No Dies or Fixtures) (CNC Room) (Removal Cost: N/C)

**9 in. x 14 in. Vibratory Finishing Machine (CNC Room) (Removal Cost: N/C)**

Lot #314 (Sale Order 314 of 700)

9 in. x 14 in. Vibratory Finishing Machine (CNC Room) (Removal Cost: N/C)

**18 in. x 27 in. 3-Tier Shop Cart (CNC Room) (Removal Cost: N/C)**

Lot #315 (Sale Order 315 of 700)

18 in. x 27 in. 3-Tier Shop Cart (CNC Room) (Removal Cost: N/C)

**Lot - Flex Arm Rotary Tool Arm, 6 in. Quick Vise, 18 in. x 18 in. Granite S**

Lot #316 (Sale Order 316 of 700)

Lot - Flex Arm Rotary Tool Arm, 6 in. Quick Vise, 18 in. x 18 in. Granite Surface Plate, 36 in. x 36 in. Heavy Duty Machine Table (CNC Room) (Removal Cost: \$25)

**Baldor Bench Grinder (CNC Room) (Removal Cost: \$20)**

Lot #317 (Sale Order 317 of 700)

Baldor Bench Grinder (CNC Room) (Removal Cost: \$20)

**Taper Tool Setup Fixture (CNC Room) (Removal Cost: N/C)**

Lot #318 (Sale Order 318 of 700)

Taper Tool Setup Fixture (CNC Room) (Removal Cost: N/C)





**Haas Model DT-1 CNC Drilling/Tapping Machining Center, S/N: 1084957 (2011);**

Lot #321 (Sale Order 321 of 700)

Haas Model DT-1 CNC Drilling/Tapping Machining Center, S/N: 1084957 (2011); 15,000 RPM Spindle Speed, 15-HP, 15 in. x 26 in. Table, 20-Position Automatic Tool Changer, 2,400-IPM, Travels: X-Axis 20 in, Y-Axis 16 in, Z-Axis 15.5 in, CNC Controls, BT30 Taper, Auger Chip Conveyor, Auto Air Gun, Renishaw Wireless Tool Setting Probe (Broken Vector Drive and Draw Bar) (CNC Room) (Removal Cost: \$400)



**Lot - Champion Parts Washer & Dryer, 18 in. x 141 in. Washer, 14 in. x 72 i**

Lot #322 (Sale Order 322 of 700)

Lot - Champion Parts Washer & Dryer, 18 in. x 141 in. Washer, 14 in. x 72 in. Dryer, 140 degree F Wash Temperature, 140 degree F Final Rinse Temperature, Webmaster One Water Treatment Controller & Pulsafeeder Timer (CNC Room) (Removal Cost: \$900)



**Lot - (2) 30 in. x 96 in. Stainless Steel Work Tables (No Contents) (CNC Ro**

Lot #324 (Sale Order 324 of 700)

Lot - (2) 30 in. x 96 in. Stainless Steel Work Tables (No Contents) (CNC Room) (Removal Cost: \$25)



**Portable Dust Collector (CNC Room) (Removal Cost: \$20)**

Lot #325 (Sale Order 325 of 700)

Portable Dust Collector (CNC Room) (Removal Cost: \$20)



**Custom Test Machine/Fixture (CNC Room) (Removal Cost: \$25)**

Lot #326 (Sale Order 326 of 700)

Custom Test Machine/Fixture (CNC Room) (Removal Cost: \$25)



**(2) 4-Drawer Tool Cabinets (No Dies or Fixtures) (CNC Room) (Removal Cost:**

Lot #327 (Sale Order 327 of 700)

(2) 4-Drawer Tool Cabinets (No Dies or Fixtures) (CNC Room) (Removal Cost: \$50)



**(2) 7 & 15-Drawer Tool Cabinets (CNC Room) (Removal Cost: \$50)**

Lot #328 (Sale Order 328 of 700)

(2) 7 & 15-Drawer Tool Cabinets (CNC Room) (Removal Cost: \$50)



**Haas Model VF1D CNC Drilling/Tapping Machining Center, S/N: 49526 (2006); 2**

Lot #331 (Sale Order 331 of 700)

Haas Model VF1D CNC Drilling/Tapping Machining Center, S/N: 49526 (2006); 20-HP, Vector Dual Drive, 1,000-IPM, 7,500 RPM Spindle Speed, 14 in. x 26 in. Table, 20-Position Automatic Tool Changer, Travels: X-Axis 20 in, Y-Axis 16 in, Z-Axis 20 in, CNC Controls, BT30 Taper, Auger Chip Conveyor, Related Transformer (Ref. #: #8) (CNC Room) (Removal Cost: \$450)



**Astral 24 in. x 36 in. Granite Surface Plate, S/N: 3901 (CNC Room) (Removal Cost: \$25)**

Lot #332 (Sale Order 332 of 700)

Astral 24 in. x 36 in. Granite Surface Plate, S/N: 3901 (CNC Room) (Removal Cost: \$25)



**Mitutoyo Digital Indicator, with Indicator Base (CNC Room) (Removal Cost: N/C)**

Lot #333 (Sale Order 333 of 700)

Mitutoyo Digital Indicator, with Indicator Base (CNC Room) (Removal Cost: N/C)



**28 in. x 48 in. Shop Table (No Contents) (CNC Room) (Removal Cost: \$25)**

Lot #334 (Sale Order 334 of 700)

28 in. x 48 in. Shop Table (No Contents) (CNC Room) (Removal Cost: \$25)



**5-Tier Shop Cart (No Contents) (CNC Room) (Removal Cost: N/C)**

Lot #336 (Sale Order 336 of 700)

5-Tier Shop Cart (No Contents) (CNC Room) (Removal Cost: N/C)



**25 in. x 29 in. Die Cart (No Contents) (CNC Room) (Removal Cost: N/C)**

Lot #337 (Sale Order 337 of 700)

25 in. x 29 in. Die Cart (No Contents) (CNC Room) (Removal Cost: N/C)



**Portable Tool Cabinet (No Dies or Fixtures) (CNC Room) (Removal Cost: N/C)**

Lot #338 (Sale Order 338 of 700)

Portable Tool Cabinet (No Dies or Fixtures) (CNC Room) (Removal Cost: N/C)



**25 in. x 29 in. Die Cart (No Contents) (CNC Room) (Removal Cost: N/C)**

Lot #339 (Sale Order 339 of 700)

25 in. x 29 in. Die Cart (No Contents) (CNC Room) (Removal Cost: N/C)



**2-Door Cabinet, with Misc. Contents (No Machine Manuals) (CNC Room) (Removal Cost: \$25)**

Lot #340 (Sale Order 340 of 700)

2-Door Cabinet, with Misc. Contents (No Machine Manuals) (CNC Room) (Removal Cost: \$25)



**Fanuc Model ROBODRILL T14iE CNC Vertical Machining Center, S/N: P076VA074 (**

Lot #341 (Sale Order 341 of 700)

Fanuc Model ROBODRILL T14iE CNC Vertical Machining Center, S/N: P076VA074 (2007); with Fanuc Series 3Ti Mdl. A5 Controls, 24,000 RPM Spindle, 14-Position Automatic Tool Changer, Related Transformer (Tsudakoma Rz-160R 4-Axis Indexer and Tool Holders Not Included) (No Fixtures) (Ref. #: #2) (CNC Room) (Removal Cost: \$400)



**Portable Shelf Unit (No Contents) (CNC Room) (Removal Cost: \$50)**

Lot #342 (Sale Order 342 of 700)

Portable Shelf Unit (No Contents) (CNC Room) (Removal Cost: \$50)

**20 in. 28 in. Shop Stand (CNC Room) (Removal Cost: N/C)**

Lot #343 (Sale Order 343 of 700)

20 in. 28 in. Shop Stand (CNC Room) (Removal Cost: N/C)

**Mitutoyo 0 in. to 18 in. Digital Height Gauge, S/N: 192-606 (Small Room in Whse)**

Lot #344 (Sale Order 344 of 700)

Mitutoyo 0 in. to 18 in. Digital Height Gauge, S/N: 192-606 (Small Room in Whse) (Removal Cost: N/C)

**Mitutoyo 12 in. Model 192-116 Height Gage (Small Room in Whse) (Removal Cos**

Lot #345 (Sale Order 345 of 700)

Mitutoyo 12 in. Model 192-116 Height Gage (Small Room in Whse) (Removal Cost: N/C)

**18 in. x 24 in. Black Granite Surface Plate (Small Room in Whse) (Removal C**

Lot #346 (Sale Order 346 of 700)

18 in. x 24 in. Black Granite Surface Plate (Small Room in Whse) (Removal Cost: N/C)

**Denso Test Gauge (Small Room in Whse) (Removal Cost: N/C)**

Lot #347 (Sale Order 347 of 700)

Denso Test Gauge (Small Room in Whse) (Removal Cost: N/C)

**Lot - Acmi Model BLS-00C1 Light Source, with Gage Stand (Small Room in Whse)**

Lot #348 (Sale Order 348 of 700)

Lot - Acmi Model BLS-00C1 Light Source, with Gage Stand (Small Room in Whse) (Removal Cost: N/C)



**30 in. x 48 in. Shop Table, Stainless Steel Top (Small Room in Whse) (Remov**

Lot #349 (Sale Order 349 of 700)

30 in. x 48 in. Shop Table, Stainless Steel Top (Small Room in Whse) (Removal Cost: \$20)



**Lot - (3) 72 in. Shop Tables, Wood Top (No Fixtures) (Small Room in Whse) (**

Lot #350 (Sale Order 350 of 700)

Lot - (3) 72 in. Shop Tables, Wood Top (No Fixtures) (Small Room in Whse) (Removal Cost: \$50)



**Fanuc Model ROBODRILL T14iE CNC Vertical Machining Center, S/N: P069VA205 (**

Lot #351 (Sale Order 351 of 700)

Fanuc Model ROBODRILL T14iE CNC Vertical Machining Center, S/N: P069VA205 (2006); with Fanuc Series 3Ti Mdl. A5 Controls, 24,000 RPM Spindle, 14-Position Automatic Tool Changer, Related Transformer (Tsudakoma Rz-160R 4-Axis Indexer Not Included) (Ref. #: #9) (CNC Room) (Removal Cost: \$400)



**30 in. x 48 in. Shop Table (No Contents) (CNC Room) (Removal Cost: \$20)**

Lot #352 (Sale Order 352 of 700)

30 in. x 48 in. Shop Table (No Contents) (CNC Room) (Removal Cost: \$20)



**18 in. x 24 in. Shop Stand (No Contents) (CNC Room) (Removal Cost: N/C)**

Lot #353 (Sale Order 353 of 700)

18 in. x 24 in. Shop Stand (No Contents) (CNC Room) (Removal Cost: N/C)



**5-Drawer Portable Tool Cabinet (No Dies or Fixtures) (CNC Room) (Removal Co**

Lot #354 (Sale Order 354 of 700)

5-Drawer Portable Tool Cabinet (No Dies or Fixtures) (CNC Room) (Removal Cost: N/C)



**Lot - (2) Steel Stands, to Include: (1) 18 in. x 24 in., and (1) 21 in. x 2**

Lot #355 (Sale Order 355 of 700)

Lot - (2) Steel Stands, to Include: (1) 18 in. x 24 in., and (1) 21 in. x 24 in. (CNC Room) (Removal Cost: \$20)



**24 in. x 30 in. Shop Table, with Stainless Steel Top (No Contents) (CNC Roo**

Lot #356 (Sale Order 356 of 700)

24 in. x 30 in. Shop Table, with Stainless Steel Top (No Contents) (CNC Room) (Removal Cost: \$20)



**Wesco 5,500 Lb. Cap. Hydraulic Pallet Jack (CNC Room) (Removal Cost: N/C)**

Lot #357 (Sale Order 357 of 700)

Wesco 5,500 Lb. Cap. Hydraulic Pallet Jack (CNC Room) (Removal Cost: N/C)



**Liftrite Model L50 Narrow Fork Hydraulic Pallet Jack, S/N: E1216-98 (CNC Ro**

Lot #358 (Sale Order 358 of 700)

Liftrite Model L50 Narrow Fork Hydraulic Pallet Jack, S/N: E1216-98 (CNC Room) (Removal Cost: N/C)



**Fanuc Model ROBODRILL T14iE CNC Vertical Machining Center, S/N: P065VA131 (**

Lot #361 (Sale Order 361 of 700)

Fanuc Model ROBODRILL T14iE CNC Vertical Machining Center, S/N: P065VA131 (2006); with Fanuc Series 3Ti Mdl. A5 Controls, 24,000 RPM Spindle, 14-Position Automatic Tool Changer, Related Transformer (Tsudakoma Rz-160R 4-Axis Indexer Not Included) (No Fixtures) (Ref. #: #1) (CNC Room) (Removal Cost: \$400)



**Portable Shelf Unit (No Inventory or Fixtures) (CNC Room) (Removal Cost: N/**

Lot #362 (Sale Order 362 of 700)

Portable Shelf Unit (No Inventory or Fixtures) (CNC Room) (Removal Cost: N/C)



**Lot - Starrett 24 in. x 36 in. Granite Surface Plate, Portable Cabinet (CNC)**

Lot #363 (Sale Order 363 of 700)

Lot - Starrett 24 in. x 36 in. Granite Surface Plate, Portable Cabinet (CNC Room) (Removal Cost: \$25)



**Starrett 8 in. x 12 in. Granite Surface Plate (CNC Room) (Removal Cost: N/C)**

Lot #364 (Sale Order 364 of 700)

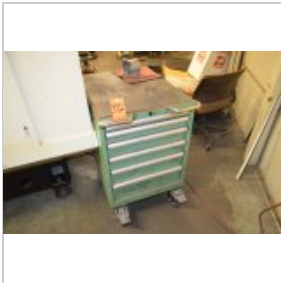
Starrett 8 in. x 12 in. Granite Surface Plate (CNC Room) (Removal Cost: N/C)



**Fanuc Model ROBODRILL T14iE CNC Vertical Machining Center, S/N: P055VA256 (**

Lot #371 (Sale Order 371 of 700)

Fanuc Model ROBODRILL T14iE CNC Vertical Machining Center, S/N: P055VA256 (2005); with Fanuc Series 3Ti Mdl. A5 Controls, 24,000 RPM Spindle, 14-Position Turret, Pallet Changer, 15 in. x 19.5 in. Table, Related Transformer (No Vise or Fixtures) (Ref. #: #10) (CNC Room) (Removal Cost: \$400)



**6-Drawer Tool Cart (No Inventory or Fixtures) (CNC Room) (Removal Cost: N/C)**

Lot #372 (Sale Order 372 of 700)

6-Drawer Tool Cart (No Inventory or Fixtures) (CNC Room) (Removal Cost: N/C)



**Denison 8-Ton Cap. Model S085LC2 Hydraulic Multipress, S/N: 17971; 5-HP, 18**

Lot #373 (Sale Order 373 of 700)

Denison 8-Ton Cap. Model S085LC2 Hydraulic Multipress, S/N: 17971; 5-HP, 18 in. Daylight, 7 in. Throat, 2.25 in. Ram Dia. (Ref. #: 1) (CNC Room) (Removal Cost: \$100)



**30 in. x 48 in. Stainless Steel Shop Table (No Contents) (CNC Room) (Remova**

Lot #374 (Sale Order 374 of 700)

30 in. x 48 in. Stainless Steel Shop Table (No Contents) (CNC Room) (Removal Cost: \$20)

**7-Drawer Tool Cabinet (No Inventory or Fixtures) (CNC Room) (Removal Cost:**

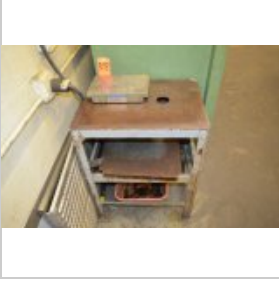
Lot #375 (Sale Order 375 of 700)

**7-Drawer Tool Cabinet (No Inventory or Fixtures) (CNC Room) (Removal Cost: \$25)****2-Door Heavy Duty Steel Cabinet (CNC Room) (Removal Cost: \$25)**

Lot #376 (Sale Order 376 of 700)

**2-Door Heavy Duty Steel Cabinet (CNC Room) (Removal Cost: \$25)****Lot - 7 & 9-Drawer Tool Cabinets (CNC Room) (Removal Cost: \$50)**

Lot #377 (Sale Order 377 of 700)

**Lot - 7 & 9-Drawer Tool Cabinets (CNC Room) (Removal Cost: \$50)****Lot - Rock of Ages 8 in. x 12 in. Granite Surface Plate, with Steel Stand (**

Lot #378 (Sale Order 378 of 700)

**Lot - Rock of Ages 8 in. x 12 in. Granite Surface Plate, with Steel Stand (CNC Room) (Removal Cost: \$20)****Central Pneumatics 2-HP Vertical Tank Mounted Air Compressor, Rated at 150**

Lot #379 (Sale Order 379 of 700)

**Central Pneumatics 2-HP Vertical Tank Mounted Air Compressor, Rated at 150 psi., 29-Gallon (CNC Room) (Removal Cost: N/C)****18 in. x 24 in. Shop Stand (No Contents) (CNC Room) (Removal Cost: \$20)**

Lot #380 (Sale Order 380 of 700)

**18 in. x 24 in. Shop Stand (No Contents) (CNC Room) (Removal Cost: \$20)**



**Fanuc Model ROBODRILL T14iE CNC Vertical Machining Center, S/N: P04XUG262 (**

Lot #381 (Sale Order 381 of 700)

Fanuc Model ROBODRILL T14iE CNC Vertical Machining Center, S/N: P04XUG262 (2004); with Fanuc Series 3Ti Mdl. A5 Controls, 24,000 RPM Spindle, 14-Position Automatic Tool Changer, (No Transformer) (Tsudakoma Rz-160R 4-Axis Indexer Not Included) (No Fixtures) (Ref. #: #7) (CNC Room) (Removal Cost: \$400)

**No. 3 Arbor Press (CNC Room) (Removal Cost: \$20)**

Lot #382 (Sale Order 382 of 700)

No. 3 Arbor Press (CNC Room) (Removal Cost: \$20)

**Lista 2-Drawer Portable Tool Cabinet (No Fixtures) (CNC Room) (Removal Cost**

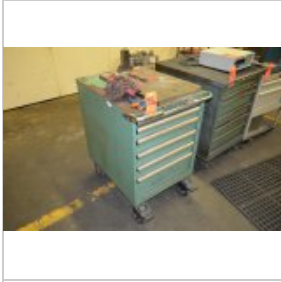
Lot #383 (Sale Order 383 of 700)

Lista 2-Drawer Portable Tool Cabinet (No Fixtures) (CNC Room) (Removal Cost: N/C)

**Lista 6-Drawer Portable Tool Cabinet (No Fixtures) (CNC Room) (Removal Cost**

Lot #385 (Sale Order 385 of 700)

Lista 6-Drawer Portable Tool Cabinet (No Fixtures) (CNC Room) (Removal Cost: N/C)

**Lista 6-Drawer Portable Tool Cabinet (No Fixtures) (CNC Room) (Removal Cost**

Lot #386 (Sale Order 386 of 700)

Lista 6-Drawer Portable Tool Cabinet (No Fixtures) (CNC Room) (Removal Cost: N/C)

**Heavy Duty Machine Table (No Fixtures or Tooling) (CNC Room) (Removal Cost:**

Lot #388 (Sale Order 388 of 700)

Heavy Duty Machine Table (No Fixtures or Tooling) (CNC Room) (Removal Cost: \$50)



**Fanuc Model ROBODRILL T14iB CNC Vertical Machining Center, S/N: P022TL713 (**

Lot #391 (Sale Order 391 of 700)

Fanuc Model ROBODRILL T14iB CNC Vertical Machining Center, S/N: P022TL713 (2001); with Fanuc Series 16i-M Controls, 15,000 RPM Spindle Speeds, 14-Position Automatic Tool Changer, 25.6 in. x 16 in. Table, BT-30 Taper, Related Transformer (BT-30 Tool Holders Not Included) (Ref. #: #3) (CNC Room) (Removal Cost: \$400)



**2-Door/5-Drawer Tool Cabinet (CNC Room) (Removal Cost: \$25)**

Lot #392 (Sale Order 392 of 700)

2-Door/5-Drawer Tool Cabinet (CNC Room) (Removal Cost: \$25)



**18 in. x 36 in. Shop Stand (No Contents) (CNC Room) (Removal Cost: \$10)**

Lot #393 (Sale Order 393 of 700)

18 in. x 36 in. Shop Stand (No Contents) (CNC Room) (Removal Cost: \$10)



**3 ft. Step Ladder (CNC Room) (Removal Cost: N/C)**

Lot #394 (Sale Order 394 of 700)

3 ft. Step Ladder (CNC Room) (Removal Cost: N/C)



**Fanuc Model ROBODRILL T14iB CNC Vertical Machining Center, S/N: P011TL714**

Lot #401 (Sale Order 401 of 700)

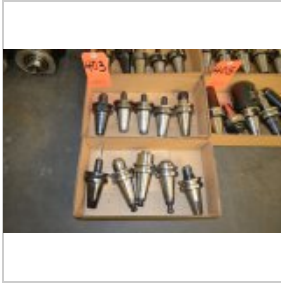
Fanuc Model ROBODRILL T14iB CNC Vertical Machining Center, S/N: P011TL714 (2001); with Fanuc Series 16i-M Controls, 15,000 RPM Spindle Speeds, 14-Position Automatic Tool Changer, 25.6 in. x 16 in. Table, BT-30 Taper, Related Transformer (BT30 Tool Holders Not Included) (Ref. #: #4) (CNC Room) (Removal Cost: \$400)



**Lot - (2) Machine Spindles (CNC Room) (Removal Cost: N/C)**

Lot #402 (Sale Order 402 of 700)

Lot - (2) Machine Spindles (CNC Room) (Removal Cost: N/C)



**Lot - (10) BT-40 Tool Holders, in (2) Boxes (CNC Room) (Removal Cost: N/C)**

Lot #403 (Sale Order 403 of 700)

Lot - (10) BT-40 Tool Holders, in (2) Boxes (CNC Room) (Removal Cost: N/C)



**Lot - (10) BT-40 Tool Holders, in (2) Boxes (CNC Room) (Removal Cost: N/C)**

Lot #404 (Sale Order 404 of 700)

Lot - (10) BT-40 Tool Holders, in (2) Boxes (CNC Room) (Removal Cost: N/C)



**Lot - (5) BT-40 Tool Holders, in (1) Box (CNC Room) (Removal Cost: N/C)**

Lot #405 (Sale Order 405 of 700)

Lot - (5) BT-40 Tool Holders, in (1) Box (CNC Room) (Removal Cost: N/C)



**Lot - (10) BT-40 Tool Holders, in (2) Boxes (CNC Room) (Removal Cost: N/C)**

Lot #406 (Sale Order 406 of 700)

Lot - (10) BT-40 Tool Holders, in (2) Boxes (CNC Room) (Removal Cost: N/C)



**2-Door/6-Drawer Tool Cabinet (No Fixtures or Contents on Top of Unit) (CNC)**

Lot #407 (Sale Order 407 of 700)

2-Door/6-Drawer Tool Cabinet (No Fixtures or Contents on Top of Unit) (CNC Room) (Removal Cost: \$25)



**Advance 15 in. x 15 in. Cross Slide Rotary Table (Tool Room) (Removal Cost:**

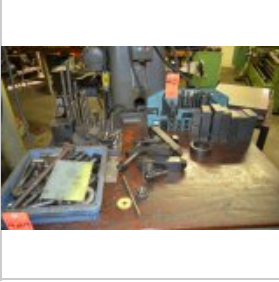
Lot #408 (Sale Order 408 of 700)

Advance 15 in. x 15 in. Cross Slide Rotary Table (Tool Room) (Removal Cost: \$25)

**15 in. Rotary Table (Tool Room) (Removal Cost: \$20)**

Lot #409 (Sale Order 409 of 700)

15 in. Rotary Table (Tool Room) (Removal Cost: \$20)

**Lot - T-Slot Hold Down Hardware (Tool Room) (Removal Cost: \$20)**

Lot #410 (Sale Order 410 of 700)

Lot - T-Slot Hold Down Hardware (Tool Room) (Removal Cost: \$20)

**Matsuura 3-Axis Model MC510VG CNC Vertical Machining Center, S/N: 10247 (19**

Lot #411 (Sale Order 411 of 700)

Matsuura 3-Axis Model MC510VG CNC Vertical Machining Center, S/N: 10247 (1998); with 15 in. x 30 in. Table, 20-Position Automatic Tool Changer, Yasnac Controls, BT-40 Taper (Tool Room) (Removal Cost: \$400)

**Aercoly Dust Collector (Behind Lot # 411) (Tool Room) (Removal Cost: \$250)**

Lot #412 (Sale Order 412 of 700)

Aercoly Dust Collector (Behind Lot # 411) (Tool Room) (Removal Cost: \$250)

**Lot - (9) BT-40 Tool Holders and (1) Drill Chuck, in (2) Boxes (Tool Room)**

Lot #413 (Sale Order 413 of 700)

Lot - (9) BT-40 Tool Holders and (1) Drill Chuck, in (2) Boxes (Tool Room) (Removal Cost: N/C)

**Lot - (10) BT-40 Tool Holders, in (2) Boxes (Tool Room) (Removal Cost: N/C)**

Lot #414 (Sale Order 414 of 700)

Lot - (10) BT-40 Tool Holders, in (2) Boxes (Tool Room) (Removal Cost: N/C)

**Lot - (10) BT-40 Tool Holders, in (2) Boxes (Tool Room) (Removal Cost: N/C)**

Lot #415 (Sale Order 415 of 700)

Lot - (10) BT-40 Tool Holders, in (2) Boxes (Tool Room) (Removal Cost: N/C)

**Lot - Tool Clamp and Boring Head (Tool Room) (Removal Cost: N/C)**

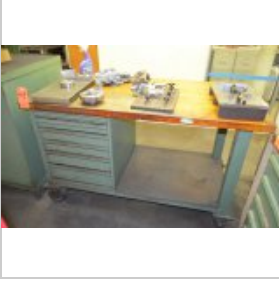
Lot #416 (Sale Order 416 of 700)

Lot - Tool Clamp and Boring Head (Tool Room) (Removal Cost: N/C)

**Lot - BT-40 Tool Holders, Tool Cabinet and Contents (Tool Room) (Removal Co**

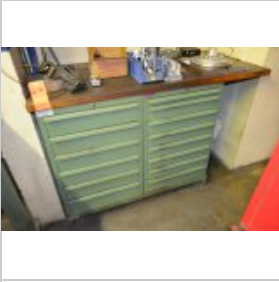
Lot #417 (Sale Order 417 of 700)

Lot - BT-40 Tool Holders, Tool Cabinet and Contents (Tool Room) (Removal Cost: \$25)

**Lot - Portable Maple Top Work Bench, with 6-Drawer Tool Cabinet (No Fixture**

Lot #418 (Sale Order 418 of 700)

Lot - Portable Maple Top Work Bench, with 6-Drawer Tool Cabinet (No Fixtures) (Tool Room) (Removal Cost: \$25)

**Lot - (2) Lista Tool Cabinets with Wood Top (No Fixtures) (Tool Room) (Remo**

Lot #419 (Sale Order 419 of 700)

Lot - (2) Lista Tool Cabinets with Wood Top (No Fixtures) (Tool Room) (Removal Cost: \$25)

**Lot - Angle Plate, Indicator Base and Fowler Granite Gage Stand (Tool Room)**

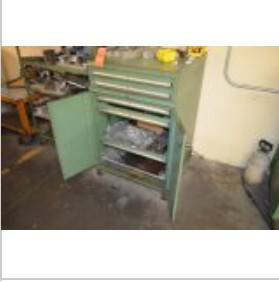
Lot #420 (Sale Order 420 of 700)

Lot - Angle Plate, Indicator Base and Fowler Granite Gage Stand (Tool Room) (Removal Cost: N/C)

**Nakamura Model TMC-18 CNC Lathe, S/N: A182606; with Nakamura-Tome Fanuc Con**

Lot #421 (Sale Order 421 of 700)

Nakamura Model TMC-18 CNC Lathe, S/N: A182606; with Nakamura-Tome Fanuc Controls, 8 in. Chuck, 15.74 in. Swing, 2 in. Bar Capacity, 12 in. long, 15-HP, 4,500 RPM (No Transformer) (CNC Room) (Removal Cost: \$400)

**2-Door/6-Drawer Tool Cabinet, with Lathe Jaws and Misc. Contents (No Fixtur**

Lot #422 (Sale Order 422 of 700)

2-Door/6-Drawer Tool Cabinet, with Lathe Jaws and Misc. Contents (No Fixtures) (CNC Room) (Removal Cost: \$25)

**8 in. 3-Jaw Chuck (CNC Room) (Removal Cost: N/C)**

Lot #423 (Sale Order 423 of 700)

8 in. 3-Jaw Chuck (CNC Room) (Removal Cost: N/C)

**2-Drawer Tool Cabinet (No Contents) (Tool Room) (Removal Cost: \$25)**

Lot #424 (Sale Order 424 of 700)

2-Drawer Tool Cabinet (No Contents) (Tool Room) (Removal Cost: \$25)

**Bridgeport 15 in. Rotary Table, S/N: 4273 (Tool Room) (Removal Cost: \$20)**

Lot #425 (Sale Order 425 of 700)

Bridgeport 15 in. Rotary Table, S/N: 4273 (Tool Room) (Removal Cost: \$20)

**Kurt 10 in. Model D100 Machine Vise, S/N: 000615 (Tool Room) (Removal Cost:**

Lot #426 (Sale Order 426 of 700)

Kurt 10 in. Model D100 Machine Vise, S/N: 000615 (Tool Room) (Removal Cost: \$20)

**10 in. Machine Vise (Tool Room) (Removal Cost: \$20)**

Lot #427 (Sale Order 427 of 700)

10 in. Machine Vise (Tool Room) (Removal Cost: \$20)

**Kurt 8 in. Model D80 Machine Vise, S/N: 003349 (Tool Room) (Removal Cost: \$**

Lot #428 (Sale Order 428 of 700)

Kurt 8 in. Model D80 Machine Vise, S/N: 003349 (Tool Room) (Removal Cost: \$20)

**Kearney & Trecker 6 in. Model 57 3-Jaw Dividing Head, S/N: 3816; with Tail**

Lot #429 (Sale Order 429 of 700)

Kearney &amp; Trecker 6 in. Model 57 3-Jaw Dividing Head, S/N: 3816; with Tail Stock and Tool Box (Tool Room) (Removal Cost: \$20)

**Lot - 21 ft. Double Sided Wood Work Bench, with (2) Wilton 4 in. Vises, (2)**

Lot #430 (Sale Order 430 of 700)

Lot - 21 ft. Double Sided Wood Work Bench, with (2) Wilton 4 in. Vises, (2) 8 ft. Light Fixtures, 110-Volt Outlets, (2) Stools, Small File Cabinets ( No Fixtures or Tooling) (Tool Room) (Removal Cost: \$75)

**Lot - (11) BT-30 Tool Holders, in (2) Boxes (CNC Room) (Removal Cost: N/C)**

Lot #431 (Sale Order 431 of 700)

Lot - (11) BT-30 Tool Holders, in (2) Boxes (CNC Room) (Removal Cost: N/C)

**Lot - (14) BT-30 Tool Holders, in (2) Boxes (CNC Room) (Removal Cost: N/C)**

Lot #432 (Sale Order 432 of 700)

Lot - (14) BT-30 Tool Holders, in (2) Boxes (CNC Room) (Removal Cost: N/C)

**Lot - (10) BT-40 Tool Holders, in (2) Boxes (CNC Room) (Removal Cost: N/C)**

Lot #433 (Sale Order 433 of 700)

Lot - (10) BT-40 Tool Holders, in (2) Boxes (CNC Room) (Removal Cost: N/C)

**Lot - (10) BT-40 Tool Holders, in (2) Boxes (CNC Room) (Removal Cost: N/C)**

Lot #434 (Sale Order 434 of 700)

Lot - (10) BT-40 Tool Holders, in (2) Boxes (CNC Room) (Removal Cost: N/C)

**Lot - (8) BT-40 Tool Holders, in (2) Boxes (CNC Room) (Removal Cost: N/C)**

Lot #435 (Sale Order 435 of 700)

Lot - (8) BT-40 Tool Holders, in (2) Boxes (CNC Room) (Removal Cost: N/C)

**Lot - (2) Drill Chucks (CNC Room) (Removal Cost: N/C)**

Lot #436 (Sale Order 436 of 700)

Lot - (2) Drill Chucks (CNC Room) (Removal Cost: N/C)

**Lot - (30) Cat-40 Tool Holders and Misc. Contents, with 2-Door/6-Drawer Too**

Lot #437 (Sale Order 437 of 700)

Lot - (30) Cat-40 Tool Holders and Misc. Contents, with 2-Door/6-Drawer Tool Cabinet (CNC Room) (Removal Cost: \$50)

**Portable Tool Cabinet (CNC Room) (Removal Cost: N/C)**

Lot #438 (Sale Order 438 of 700)

Portable Tool Cabinet (CNC Room) (Removal Cost: N/C)



**8 in. Machine Vise (No Fixture) (Behind Lot # 371) (CNC Room) (Removal Cost**

Lot #441 (Sale Order 441 of 700)

**8 in. Machine Vise (No Fixture) (Behind Lot # 371) (CNC Room) (Removal Cost: \$10)****Kurt 6 in. Model D60 Machine Vise, S/N: 031218 (CNC Room) (Removal Cost: \$1**

Lot #442 (Sale Order 442 of 700)

**Kurt 6 in. Model D60 Machine Vise, S/N: 031218 (CNC Room) (Removal Cost: \$10)****6 in. Machine Vise (CNC Room) (Removal Cost: \$10)**

Lot #443 (Sale Order 443 of 700)

**6 in. Machine Vise (CNC Room) (Removal Cost: \$10)****Kurt 6 in. Model D60 Machine Vise, S/N: 025657 (CNC Room) (Removal Cost: \$1**

Lot #444 (Sale Order 444 of 700)

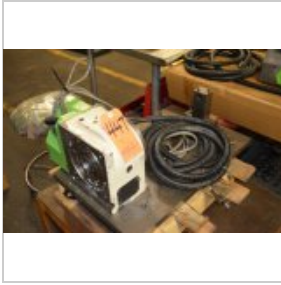
**Kurt 6 in. Model D60 Machine Vise, S/N: 025657 (CNC Room) (Removal Cost: \$10)****Tsudakoma Model RZ-160 Rotary 4th Axis, S/N: 080708 (No Controls, No Fixtur**

Lot #445 (Sale Order 445 of 700)

**Tsudakoma Model RZ-160 Rotary 4th Axis, S/N: 080708 (No Controls, No Fixtures) (CNC Room) (Removal Cost: \$50)****Tsudakoma Model RZ-160 Rotary 4th Axis, S/N: 110107 (No Controls, No Fixtur**

Lot #446 (Sale Order 446 of 700)

**Tsudakoma Model RZ-160 Rotary 4th Axis, S/N: 110107 (No Controls, No Fixtures) (CNC Room) (Removal Cost: \$50)**

**Tsudakoma Model RZ-160 Rotary 4th Axis, S/N: 101675 (No Controls, No Fixtur)**

Lot #447 (Sale Order 447 of 700)

Tsudakoma Model RZ-160 Rotary 4th Axis, S/N: 101675 (No Controls, No Fixtures) (CNC Room) (Removal Cost: \$25)

**Tsudakoma Model RZ-160 Rotary 4th Axis, S/N: 110117 (No Controls, No Fixtur)**

Lot #448 (Sale Order 448 of 700)

Tsudakoma Model RZ-160 Rotary 4th Axis, S/N: 110117 (No Controls, No Fixtures) (CNC Room) (Removal Cost: \$25)

**Tsudakoma Model RZ-160 Rotary 4th Axis, S/N: 081117 (No Controls, No Fixtur)**

Lot #449 (Sale Order 449 of 700)

Tsudakoma Model RZ-160 Rotary 4th Axis, S/N: 081117 (No Controls, No Fixtures) (CNC Room) (Removal Cost: \$25)

**Tsudakoma Model RZ-160 Rotary 4th Axis, S/N: 061830 (No Controls, No Fixtur)**

Lot #450 (Sale Order 450 of 700)

Tsudakoma Model RZ-160 Rotary 4th Axis, S/N: 061830 (No Controls, No Fixtures) (CNC Room) (Removal Cost: \$25)

**Tsudakoma Model RZ-160 Rotary 4th Axis, S/N: 080707 (No Controls, No Fixtur)**

Lot #450A (Sale Order 450 of 700)

Tsudakoma Model RZ-160 Rotary 4th Axis, S/N: 080707 (No Controls, No Fixtures) (2nd Floor) (Removal Cost: \$25)

**Haas Model HA5C 5-C Collet Type Rotary 4th Axis, S/N: 506991 (No Controls)**

Lot #451 (Sale Order 451 of 700)

Haas Model HA5C 5-C Collet Type Rotary 4th Axis, S/N: 506991 (No Controls) (CNC Room) (Removal Cost: \$25)



**Tsudakoma Model TPC-Jr-G2 Rotary 4th Axis Controller, S/N: 1101849 (CNC Roo**

Lot #452 (Sale Order 452 of 700)

Tsudakoma Model TPC-Jr-G2 Rotary 4th Axis Controller, S/N: 1101849 (CNC Room) (Removal Cost: \$10)



**Tsudakoma Model TPC-Jr-G2 Rotary 4th Axis Controller, S/N: 0805337 (CNC Roo**

Lot #452A (Sale Order 452 of 700)

Tsudakoma Model TPC-Jr-G2 Rotary 4th Axis Controller, S/N: 0805337 (CNC Room) (Removal Cost: \$10)



**Haas Servo Control, S/N: 800008 (CNC Room) (Removal Cost: \$10)**

Lot #453 (Sale Order 453 of 700)

Haas Servo Control, S/N: 800008 (CNC Room) (Removal Cost: \$10)



**Fanuc Model AISV-80/80 Servo Amplifier Module, S/N: V13440711 (Appears New)**

Lot #454 (Sale Order 454 of 700)

Fanuc Model AISV-80/80 Servo Amplifier Module, S/N: V13440711 (Appears New) (CNC Room) (Removal Cost: \$10)



**6 in. Machine Vise, S/N: 70939 (CNC Room) (Removal Cost: \$10)**

Lot #455 (Sale Order 455 of 700)

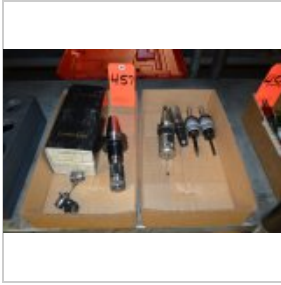
6 in. Machine Vise, S/N: 70939 (CNC Room) (Removal Cost: \$10)



**Lot - CAT-40 Tool Holders and Collets (CNC Room) (Removal Cost: N/C)**

Lot #456 (Sale Order 456 of 700)

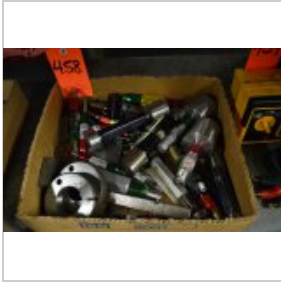
Lot - CAT-40 Tool Holders and Collets (CNC Room) (Removal Cost: N/C)



**Lot - Assorted Tool Holders (CNC Room) (Removal Cost: N/C)**

Lot #457 (Sale Order 457 of 700)

Lot - Assorted Tool Holders (CNC Room) (Removal Cost: N/C)



**Lot - Assorted Inspection Tooling (CNC Room) (Removal Cost: N/C)**

Lot #458 (Sale Order 458 of 700)

Lot - Assorted Inspection Tooling (CNC Room) (Removal Cost: N/C)



**Biddle Instruments Voltage Meter (CNC Room) (Removal Cost: N/C)**

Lot #459 (Sale Order 459 of 700)

Biddle Instruments Voltage Meter (CNC Room) (Removal Cost: N/C)



**Bk Precision Model 2125A Dual Trace Oscilloscope (Removal Cost: N/C)**

Lot #460 (Sale Order 460 of 700)

Bk Precision Model 2125A Dual Trace Oscilloscope (Removal Cost: N/C)



**DeWalt Model DW303M Reciprocating Saw, S/N: 144575; with Case (CNC Room) (R**

Lot #461 (Sale Order 461 of 700)

DeWalt Model DW303M Reciprocating Saw, S/N: 144575; with Case (CNC Room) (Removal Cost: N/C)



**Lot - (3) Milwaukee Power Tools, to Include: (1) Power Band Saw, (1) Sawzall**

Lot #462 (Sale Order 462 of 700)

Lot - (3) Milwaukee Power Tools, to Include: (1) Power Band Saw, (1) Sawzall, and (1) Cordless Drill (CNC Room) (Removal Cost: N/C)

**Lot - (5) Assorted Electric Power Tools (CNC Room) (Removal Cost: N/C)**

Lot #463 (Sale Order 463 of 700)

Lot - (5) Assorted Electric Power Tools (CNC Room) (Removal Cost: N/C)

**Lot - (5) Assorted Pneumatic Power Tools (CNC Room) (Removal Cost: N/C)**

Lot #464 (Sale Order 464 of 700)

Lot - (5) Assorted Pneumatic Power Tools (CNC Room) (Removal Cost: N/C)

**Lot - Perishable Tooling, to Include: End Mills, Taps, Reamers, Counterbore**

Lot #465 (Sale Order 465 of 700)

Lot - Perishable Tooling, to Include: End Mills, Taps, Reamers, Counterbores, Drill Bits Etc. (CNC Room) (Removal Cost: \$25)

**25 in. x 28 in. Portable Die Cart (No Contents) (CNC Room) (Removal Cost: N**

Lot #466 (Sale Order 466 of 700)

25 in. x 28 in. Portable Die Cart (No Contents) (CNC Room) (Removal Cost: N/C)

**JAM Model DDH150 4.5 in. Compound Vise, with Digital Read-Out (Tool Room) (**

Lot #467 (Sale Order 467 of 700)

JAM Model DDH150 4.5 in. Compound Vise, with Digital Read-Out (Tool Room) (Removal Cost: N/C)

**Ex-Cello 6.5 in. x 6.5 in. Magnetic Sine Chuck (Tool Room) (Removal Cost: N**

Lot #468 (Sale Order 468 of 700)

Ex-Cello 6.5 in. x 6.5 in. Magnetic Sine Chuck (Tool Room) (Removal Cost: N/C)



**Lot - Machine Attachments, to Include: (1) 9 in. x 16 in. x 12 in. Angle PI**

Lot #469 (Sale Order 469 of 700)

Lot - Machine Attachments, to Include: (1) 9 in. x 16 in. x 12 in. Angle Plate, and (3) 9 in. Long V-Blocks (Tool Room) (Removal Cost: \$10)



**2-Door Cabinet, with Misc. Contents (Tool Room) (Removal Cost: \$20)**

Lot #470 (Sale Order 470 of 700)

2-Door Cabinet, with Misc. Contents (Tool Room) (Removal Cost: \$20)



**Lot - (2) Toolex 2-Head Machine Vises (No Fixtures) (Grinding Room) (Remova**

Lot #471 (Sale Order 471 of 700)

Lot - (2) Toolex 2-Head Machine Vises (No Fixtures) (Grinding Room) (Removal Cost: \$10)



**10 in. x 14 in. Sine Plate (Grinding Room) (Removal Cost: \$10)**

Lot #472 (Sale Order 472 of 700)

10 in. x 14 in. Sine Plate (Grinding Room) (Removal Cost: \$10)



**Troyke 9 in. Model P-9 Rotary Table, S/N: 27067 (Grinding Room) (Removal Co**

Lot #473 (Sale Order 473 of 700)

Troyke 9 in. Model P-9 Rotary Table, S/N: 27067 (Grinding Room) (Removal Cost: \$10)



**Starrett 6 in. Model 1026 Machine Vise (Grinding Room) (Removal Cost: \$10)**

Lot #474 (Sale Order 474 of 700)

Starrett 6 in. Model 1026 Machine Vise (Grinding Room) (Removal Cost: \$10)



**Lot - (4) Assorted Machine Vises (Grinding Room) (Removal Cost: \$10)**

Lot #474A (Sale Order 474 of 700)

Lot - (4) Assorted Machine Vises (Grinding Room) (Removal Cost: \$10)



**Lot - Anderson Tool Balancer and Die Pin Truing Device (Grinding Room) (Removal Cost: \$10)**

Lot #474B (Sale Order 474 of 700)

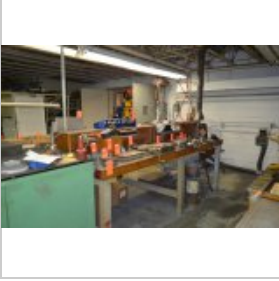
Lot - Anderson Tool Balancer and Die Pin Truing Device (Grinding Room) (Removal Cost: \$10)



**Lot - Assorted Inspection Equipment, to Include: 12 in. Dial Height Gage, Astral 18 in. x 18 in. Granite Surface Plate S/N 3890, Small Angle Block (Grinding Room) (Removal Cost: \$10)**

Lot #474C (Sale Order 474 of 700)

Lot - Assorted Inspection Equipment, to Include: 12 in. Dial Height Gage, Astral 18 in. x 18 in. Granite Surface Plate S/N 3890, Small Angle Block (Grinding Room) (Removal Cost: \$10)



**56 in. x 10 ft. Double Side Bench, with Light Fixture and 110 V Outlets (No Fixtures, Tooling or Contents) (Grinding Room) (Removal Cost: \$25)**

Lot #474D (Sale Order 474 of 700)

56 in. x 10 ft. Double Side Bench, with Light Fixture and 110 V Outlets (No Fixtures, Tooling or Contents) (Grinding Room) (Removal Cost: \$25)



**Idra 800-Ton Cap. U.S. (OL 700 PRP) Model OL/800 US Cold Chamber Die Cast Machine (Removal Cost: \$6500)**

Lot #475 (Sale Order 475 of 700)

Idra 800-Ton Cap. U.S. (OL 700 PRP) Model OL/800 US Cold Chamber Die Cast Machine, S/N: 7145 (1997); 849-Ton U.S. Max. Clamping Force, 225-Ton U.S. Max. Opening Force, 33 in. Platen Stroke, Idra 35 lb. Linear Ladle, Allen-Bradley Controls, 23 in. Injection Stroke, 7 in. Ejection Stroke; Idra/STP 2-Axis Linear Die Sprayer, Siemens Simatic 100 Controls, Idra 38 lb. Dedicated Robot Parts Extractor, Allen-Bradley Slc5104 Controls, Siemens Control Simatic Pcf145 Allen-Bradley (Ref. #: DCM9) (Removal Cost: \$6500)



**MPH Aluminum Low Energy Electric Holding Furnace (1993) (DCM9 Area) (Removal Cost: \$300)**

Lot #476 (Sale Order 476 of 700)

MPH Aluminum Low Energy Electric Holding Furnace (1993) (DCM9 Area) (Removal Cost: \$300)

**Sterling Model F6016DX Thermolator Hot Oil Transfer Cart, S/N: 64561 (1989)**

Lot #477 (Sale Order 477 of 700)

Sterling Model F6016DX Thermolator Hot Oil Transfer Cart, S/N: 64561 (1989); with Barber Coleman Controls (DCM7/9 Area) (Removal Cost: \$50)

**Idra 609-Metric Ton (671-U.S. Ton) Cap. Model OL/560 Cold Chamber Die Cast**

Lot #485 (Sale Order 485 of 700)

Idra 609-Metric Ton (671-U.S. Ton) Cap. Model OL/560 Cold Chamber Die Cast Machine, S/N: 7005 (1996); with Rimrock Model 305 Ladle with Micro Controls, Rimrock Model 310 Sprayer with Micro Controls, Kuka 6-Axis Parts Extraction Robot, Allen-Bradley PLC 5 Controls (Parts Missing) (Ref. #: DCM1) (Removal Cost: \$4500)

**MPH 53 in. x 57 in. x 61.5 in. Model H-1412 Aluminum Low Energy Electric Ho**

Lot #486 (Sale Order 486 of 700)

MPH 53 in. x 57 in. x 61.5 in. Model H-1412 Aluminum Low Energy Electric Holding Furnace, S/N: R4034 (1994); with Electric Lid, Honeywell 2500 Series Digital Controls, 3,000-Watts (DCM1 Area) (Removal Cost: \$300)

**Lot - (4) 6-Drawer Tool Cabinets, with Misc. Contents (No Fixtures) (DCM1 A)**

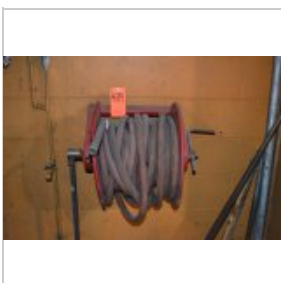
Lot #487 (Sale Order 487 of 700)

Lot - (4) 6-Drawer Tool Cabinets, with Misc. Contents (No Fixtures) (DCM1 Area) (Removal Cost: \$40)

**Hydraulic Oil Filter/Pump (DCM1 Area) (Removal Cost: \$10)**

Lot #488 (Sale Order 488 of 700)

Hydraulic Oil Filter/Pump (DCM1 Area) (Removal Cost: \$10)

**Wall Mount Water Hose Reel (DCM1 Area) (Removal Cost: \$10)**

Lot #489 (Sale Order 489 of 700)

Wall Mount Water Hose Reel (DCM1 Area) (Removal Cost: \$10)



**Drum Top Vacuum (DCM3 Area) (Removal Cost: \$10)**

Lot #490 (Sale Order 490 of 700)

Drum Top Vacuum (DCM3 Area) (Removal Cost: \$10)

**Power Grease Pump (DCM3 Area) (Removal Cost: \$10)**

Lot #491 (Sale Order 491 of 700)

Power Grease Pump (DCM3 Area) (Removal Cost: \$10)

**Fluid Filter/Pump, with Wire Basket (DCM3 Area) (Removal Cost: \$10)**

Lot #492 (Sale Order 492 of 700)

Fluid Filter/Pump, with Wire Basket (DCM3 Area) (Removal Cost: \$10)

**Lot - (2) Assorted Oil Drum Racks (DCM3 Area) (Removal Cost: \$25)**

Lot #493 (Sale Order 493 of 700)

Lot - (2) Assorted Oil Drum Racks (DCM3 Area) (Removal Cost: \$25)

**Drum Cart, with Manual Pump (DCM3 Area) (Removal Cost: \$10)**

Lot #494 (Sale Order 494 of 700)

Drum Cart, with Manual Pump (DCM3 Area) (Removal Cost: \$10)

**Idra 609-Metric Ton (671-U.S. Ton) Cap. Model OL/560 Cold Chamber Die Cast**

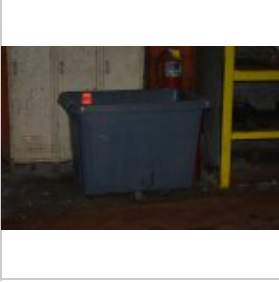
Lot #495 (Sale Order 495 of 700)

Idra 609-Metric Ton (671-U.S. Ton) Cap. Model OL/560 Cold Chamber Die Cast Machine, S/N: 7214 (1998); with Rimrock 15 lb. Cap. Model 305 Ladle with Micro Controls, Gerlieva Linear Die Sprayer with Siemens Controls (Held in Reserve), Allen-Bradley PLC 5 Panelview Controls (No Dies) (Ref. #: DCM3) (Removal Cost: \$4500)

**MPH 48 in. x 48.5 in. x 24 in. Model LE1412 Low End Energy Electric Holding**

Lot #496 (Sale Order 496 of 700)

MPH 48 in. x 48.5 in. x 24 in. Model LE1412 Low End Energy Electric Holding Furnace, S/N: 7652-84/1 (Rebuilt 2008, New 1994); with Electric Lid, Honeywell 2500 Series Digital Controls, 2,250-Watts (DCM3 Area) (Removal Cost: \$300)

**Rubbermaid Utility Cart (DCM3 Area) (Removal Cost: N/C)**

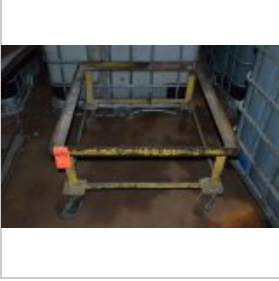
Lot #497 (Sale Order 497 of 700)

Rubbermaid Utility Cart (DCM3 Area) (Removal Cost: N/C)

**Steel Self-Dumping Scrap Hopper (No Contents) (DCM3 Area) (Removal Cost: \$2**

Lot #498 (Sale Order 498 of 700)

Steel Self-Dumping Scrap Hopper (No Contents) (DCM3 Area) (Removal Cost: \$25)

**34 in. x 38 in. Heavy Duty Portable Cart (DCM3 Area) (Removal Cost: N/C)**

Lot #499 (Sale Order 499 of 700)

34 in. x 38 in. Heavy Duty Portable Cart (DCM3 Area) (Removal Cost: N/C)

**3-Door Locker (DCM3 Area) (Removal Cost: \$25)**

Lot #500 (Sale Order 500 of 700)

3-Door Locker (DCM3 Area) (Removal Cost: \$25)

**Steel Self-Dumping Scrap Hopper (DCM3 Area) (Removal Cost: \$25)**

Lot #501 (Sale Order 501 of 700)

Steel Self-Dumping Scrap Hopper (DCM3 Area) (Removal Cost: \$25)



**Steel Self-Dumping Scrap Hopper (DCM3 Area) (Removal Cost: \$25)**

Lot #502 (Sale Order 502 of 700)

Steel Self-Dumping Scrap Hopper (DCM3 Area) (Removal Cost: \$25)



**Shop Cabinet, with Misc. Contents (DCM3 Area) (Removal Cost: \$25)**

Lot #503 (Sale Order 503 of 700)

Shop Cabinet, with Misc. Contents (DCM3 Area) (Removal Cost: \$25)



**Lot - (2) Assorted Fans (DCM3 Area) (Removal Cost: \$25)**

Lot #504 (Sale Order 504 of 700)

Lot - (2) Assorted Fans (DCM3 Area) (Removal Cost: \$25)



**Idra 609-Metric Ton (671-U.S. Ton) Cap. Model OL 560 Cold Chamber Die Cast**

Lot #505 (Sale Order 505 of 700)

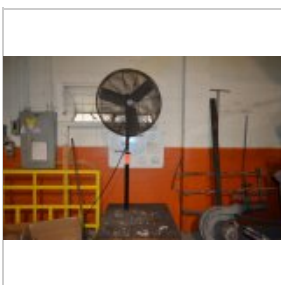
Idra 609-Metric Ton (671-U.S. Ton) Cap. Model OL 560 Cold Chamber Die Cast Machine, S/N: 7070 (1996); with Rimrock 15 lb. Cap. Model 305 Ladle with Micro Controls, Rimrock Model 310 Sprayer with Micro Controls, Rimrock Model 195 Extractor with Micro Controls, Allen-Bradley PLC 5 Controls (Parts Missing, Components Machine) (Ref. #: DCM2) (Removal Cost: \$4500)



**MPH 48 in. x 48.5 in. x 24 in. Aluminum Low Energy Electric Holding Furnace**

Lot #506 (Sale Order 506 of 700)

MPH 48 in. x 48.5 in. x 24 in. Aluminum Low Energy Electric Holding Furnace (1994); with Electric Lid, Honeywell 2500 Series Digital Controls, 2,250-Watts (Missing Components) (DCM2 Area) (Removal Cost: \$300)



**Pedestal Fan, with Wood Cart (Seco Melter Area) (Removal Cost: \$10)**

Lot #507 (Sale Order 507 of 700)

Pedestal Fan, with Wood Cart (Seco Melter Area) (Removal Cost: \$10)



**Lot - (2) 10 ft. Aluminum Step Ladders (Seco Melter Area) (Removal Cost: \$1**

Lot #508 (Sale Order 508 of 700)

Lot - (2) 10 ft. Aluminum Step Ladders (Seco Melter Area) (Removal Cost: \$10)



**8 ft. Fiberglass Step Ladder (Seco Melter Area) (Removal Cost: \$10)**

Lot #509 (Sale Order 509 of 700)

8 ft. Fiberglass Step Ladder (Seco Melter Area) (Removal Cost: \$10)



**28 ft. Fiberglass Extension Ladder (Seco Melter Area) (Removal Cost: \$10)**

Lot #510 (Sale Order 510 of 700)

28 ft. Fiberglass Extension Ladder (Seco Melter Area) (Removal Cost: \$10)



**Lot - Spools of Wire, with Double Side Rack (Seco Melter Area) (Removal Cos**

Lot #511 (Sale Order 511 of 700)

Lot - Spools of Wire, with Double Side Rack (Seco Melter Area) (Removal Cost: \$10)



**Lot - (2) Welders, to Include: (1) Miller Maxstar 151 CC/DC Inverter Weldin**

Lot #512 (Sale Order 512 of 700)

Lot - (2) Welders, to Include: (1) Miller Maxstar 151 CC/DC Inverter Welding Power /Source, and (1) Thermal Dynamics Pak Master 25 Plasma Cutting System (Seco Melter Area) (Removal Cost: \$10)



**Lot - (3) Acetylene Torch Carts (No Gas Cylinders) (Seco Melter Area) (Remo**

Lot #513 (Sale Order 513 of 700)

Lot - (3) Acetylene Torch Carts (No Gas Cylinders) (Seco Melter Area) (Removal Cost: N/C)



**Miller Model Thunderbolt XL 300/200 Amp CC.AC/DC Welding Power Source (Seco)**

Lot #514 (Sale Order 514 of 700)

Miller Model Thunderbolt XL 300/200 Amp CC.AC/DC Welding Power Source (Seco Melter Area) (Removal Cost: N/C)



**HPM 400-Ton Cap. Model II-400-A Cold Chamber Die Cast Machine, S/N: 88-010**

Lot #515 (Sale Order 515 of 700)

HPM 400-Ton Cap. Model II-400-A Cold Chamber Die Cast Machine, S/N: 88-010 (1988); with Relay Logic Controls, Rimrock 15 lb. Model 305 Ladle with Micro Controls, Rimrock Model 310 Die Sprayer (Mechanical - No Controls) (Ref. #: DCM5) (Removal Cost: \$3000)



**MPH 48 in. x 48.5 in. x 24 in. Aluminum Low Energy Electric Furnace (1994),**

Lot #516 (Sale Order 516 of 700)

MPH 48 in. x 48.5 in. x 24 in. Aluminum Low Energy Electric Furnace (1994), with Electric Lid, Honeywell 2500 Series Digital Controls, 2,250-Watts (Lid Missing) (DCM5 Area) (Removal Cost: \$300)



**Fluid Filter/Pump (Seco Melter Area) (Removal Cost: N/C)**

Lot #517 (Sale Order 517 of 700)

Fluid Filter/Pump (Seco Melter Area) (Removal Cost: N/C)



**Lot - Ridgid Model 300 Pipe Threader, with Tooling and Pipe Vise on Tri-Pod**

Lot #518 (Sale Order 518 of 700)

Lot - Ridgid Model 300 Pipe Threader, with Tooling and Pipe Vise on Tri-Pod Stand (Removal Cost: \$25)



**HPM 400-Ton Cap. Model II-400-A Cold Chamber Die Cast Machine, S/N: 84-278**

Lot #525 (Sale Order 525 of 700)

HPM 400-Ton Cap. Model II-400-A Cold Chamber Die Cast Machine, S/N: 84-278 (1984); with Relay Logic Controls, Rimrock 15 lb. Model 305 Ladle with Micro Controls, Rimrock Model 310 Die Sprayer with Micro Controls, 195 Extractor with Micro Controls (No Master Die Holder or Dies) (Ref. #: DCM7) (Removal Cost: \$3000)



**Lot - Die Cast Machine Tie Bars (On Top Shelf) (DCM5 Area) (Removal Cost: \$**

Lot #527 (Sale Order 527 of 700)

Lot - Die Cast Machine Tie Bars (On Top Shelf) (DCM5 Area) (Removal Cost: \$100)



**Lot - Machine Ladels, Misc. Parts and Rack (No Tie Bars) (DCM5 Area) (Remov**

Lot #528 (Sale Order 528 of 700)

Lot - Machine Ladels, Misc. Parts and Rack (No Tie Bars) (DCM5 Area) (Removal Cost: \$50)



**Lot - (7) DME Die Holders (No Dies) (Die Cast Room & Whse) (Removal Cost: \$**

Lot #529 (Sale Order 529 of 700)

Lot - (7) DME Die Holders (No Dies) (Die Cast Room & Whse) (Removal Cost: \$100)



**Kuka 6-Axis Model 2H15-2 Extractor, S/N: 4404 (2001) (Parts Missing) (2nd F**

Lot #531 (Sale Order 531 of 700)

Kuka 6-Axis Model 2H15-2 Extractor, S/N: 4404 (2001) (Parts Missing) (2nd Floor) (Removal Cost: \$100)



**MPH 48 in. x 48.5 in. x 24 in. Model 62-H1412 Aluminum Low Energy Electric**

Lot #532 (Sale Order 532 of 700)

MPH 48 in. x 48.5 in. x 24 in. Model 62-H1412 Aluminum Low Energy Electric Holding Furnace, S/N: 111028 (1993); with Electric Lid, Honeywell 2500 Series Digital Controls, 2,250-Watts (Missing Components), (DCM9 Area) (Removal Cost: \$250)



**Striko Model PA15480 (MH 1000/1000) Melting Furnace, S/N: 154800995 (1995);**

Lot #533 (Sale Order 533 of 700)

Striko Model PA15480 (MH 1000/1000) Melting Furnace, S/N: 154800995 (1995); 1,000Kg Bath Size, 1,000Kg Per Hour, Siemens Op15 Cpu Simatic S5-100U Controls, Elevator Loader, 1,800 Degrees F Capacity, (18) Steel Hopper Carts (Die Casting Room) (Removal Cost: \$3000)



**Seco Warwick Model WBT-60 Tilting Barrel Furnace, S/N: W-546-85; with Honey**

Lot #534 (Sale Order 534 of 700)

Seco Warwick Model WBT-60 Tilting Barrel Furnace, S/N: W-546-85; with Honeywell Temperature & Burner Controls, Relay Logic Fire Eye, 6,000 lb. Bath Size, 1,600 lb./Hour, 1,600 Degrees F Capacity (Die Casting Room) (Removal Cost: \$1750)



**Schaefer Tilting Barrel Furnace, S/N: 18929; with Honeywell Temperature & B**

Lot #535 (Sale Order 535 of 700)

Schaefer Tilting Barrel Furnace, S/N: 18929; with Honeywell Temperature & Burner Controls, Relay Logic Fire Eye, 4,850 lb. Bath Size, 600 lb./Hour, 1,600 Degrees F Capacity (with Aluminum in Furnace) (Die Casting Room) (Removal Cost: \$300)



**(2) Die Cast Furnaces (Scrap) (Outside) (Removal Cost: \$50)**

Lot #536 (Sale Order 536 of 700)

(2) Die Cast Furnaces (Scrap) (Outside) (Removal Cost: \$50)



**Rimrock Model 1950360B0 Extractor, S/N: EA149; with 60 in. Stroke (Scrap) (**

Lot #537 (Sale Order 537 of 700)

Rimrock Model 1950360B0 Extractor, S/N: EA149; with 60 in. Stroke (Scrap) (Outside) (Removal Cost: \$25)



**Transfer Ladle (For Aluminum) (Die Cast Room) (Removal Cost: \$25)**

Lot #538 (Sale Order 538 of 700)

Transfer Ladle (For Aluminum) (Die Cast Room) (Removal Cost: \$25)



**Transfer Ladle (For Zinc) (Die Cast Room) (Removal Cost: \$25)**

Lot #539 (Sale Order 539 of 700)

Transfer Ladle (For Zinc) (Die Cast Room) (Removal Cost: \$25)



**Transfer Ladle (Vibratory Finishing Room) (Removal Cost: \$25)**

Lot #540 (Sale Order 540 of 700)

Transfer Ladle (Vibratory Finishing Room) (Removal Cost: \$25)



**Pyrotec Rotary Degasser (Die Cast Room) (Removal Cost: \$200)**

Lot #541 (Sale Order 541 of 700)

Pyrotec Rotary Degasser (Die Cast Room) (Removal Cost: \$200)



**DiessePress 30-Ton Cap. Model 2VT-30S Hydraulic Trim Press, S/N: 237902 (20**

Lot #542 (Sale Order 542 of 700)

DiessePress 30-Ton Cap. Model 2VT-30S Hydraulic Trim Press, S/N: 237902 (2002); with Siemens Panelview Op7 Controls, Thrust Force, 600/Min. Max. Stroke, 1.0M Max. Opening, 400-mm/Min. Opening, 40 in. Between Bars (DCM9 Area) (Removal Cost: \$500)



**Denison 8-Ton Cap. Model FWS087 Hydraulic Multipress, S/N: 25358 (Die Tooli**

Lot #544 (Sale Order 544 of 700)

Denison 8-Ton Cap. Model FWS087 Hydraulic Multipress, S/N: 25358 (Die Tooling and Fixtures Not Included) (Ref. #: 3) (DCM9 Area) (Removal Cost: \$75)



**Denison 2-Ton Cap. Multipress (Parts Machine) (Ref. #: 4) (DCM9 Area) (Remo**

Lot #545 (Sale Order 545 of 700)

Denison 2-Ton Cap. Multipress (Parts Machine) (Ref. #: 4) (DCM9 Area) (Removal Cost: \$100)



**DiessePress 30-Ton Cap. Model 2VT30 Hydraulic Trim Press, S/N: 2447-03 (200**

Lot #546 (Sale Order 546 of 700)

DiessePress 30-Ton Cap. Model 2VT30 Hydraulic Trim Press, S/N: 2447-03 (2003); with Siemens Panelview OP7 Controls, Thrust Force, 600-mm Max. Stroke, 1.0M Max. Opening, 400-mm/Min. Opening with Hydraulic Discharge Table, (DCM1 Area) (Removal Cost: \$500)

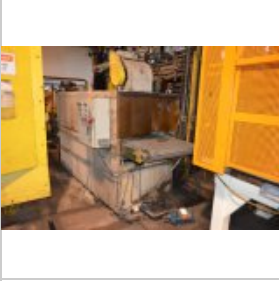




**Regloplas Model 301/24/FM65/1K/RT45 Thermolator - Hot Oil Transfer Cart, S/**

Lot #548 (Sale Order 548 of 700)

Regloplas Model 301/24/FM65/1K/RT45 Thermolator - Hot Oil Transfer Cart, S/N: 560562 (2002) (Ref. #: R3) (DCM2 Area) (Removal Cost: \$50)



**Prab 30 in. x 12 ft. Cooling Station, S/N: 8754 (Needs Repair) (DCM2 Area)**

Lot #549 (Sale Order 549 of 700)

Prab 30 in. x 12 ft. Cooling Station, S/N: 8754 (Needs Repair) (DCM2 Area) (Removal Cost: \$400)



**24 in. x 12 ft. Discharge Table (DCM2 Area) (Removal Cost: \$20)**

Lot #550 (Sale Order 550 of 700)

24 in. x 12 ft. Discharge Table (DCM2 Area) (Removal Cost: \$20)



**DiessePress 30-Ton Cap. Model 2VT30S-R Hydraulic Trim Press, S/N: 2.378/02**

Lot #551 (Sale Order 551 of 700)

DiessePress 30-Ton Cap. Model 2VT30S-R Hydraulic Trim Press, S/N: 2.378/02 (2002); with Siemens Panelview Controls, Thrust Force, 600-mm Stroke, 48 in. Between Bars (DCM2 Area) (Removal Cost: \$500)



**Denison 8-Ton Cap. Model S085LC2 Hydraulic Multipress, S/N: 17972; with 18**

Lot #552 (Sale Order 552 of 700)

Denison 8-Ton Cap. Model S085LC2 Hydraulic Multipress, S/N: 17972; with 18 in. Daylight, 7 in. Throat, 2.25 in. Ram Dia., 5-HP (Die Tooling and Fixtures Not Included), (Ref. #: 2) (DCM9 Area) (Removal Cost: \$100)



**Schlegel 7 in. Bench Vise, with Stand (DCM9 Area) (Removal Cost: \$25)**

Lot #553 (Sale Order 553 of 700)

Schlegel 7 in. Bench Vise, with Stand (DCM9 Area) (Removal Cost: \$25)



**Regloplas Model 301/36/FM65/1K 1RT45 Thermolator Hot Oil Transfer Cart, S/N**

Lot #554 (Sale Order 554 of 700)

Regloplas Model 301/36/FM65/1K 1RT45 Thermolator Hot Oil Transfer Cart, S/N: 560701 (2003); with Regloplas RT45 Controls, (Ref. #: R4) (DCM7 Area) (Removal Cost: \$100)



**Reis 30-Ton Cap. Model SEP 6-30 Hydraulic Trim Press, S/N: 638072; with KI**

Lot #555 (Sale Order 555 of 700)

Reis 30-Ton Cap. Model SEP 6-30 Hydraulic Trim Press, S/N: 638072; with Klaschka Controls (DCM7 Area) (Removal Cost: \$400)



**24 in. x 165 in. (approx.) Forced Air Parts Cooling Conveyor, with 3-Fan Co**

Lot #556 (Sale Order 556 of 700)

24 in. x 165 in. (approx.) Forced Air Parts Cooling Conveyor, with 3-Fan Cooling Unit (DCM7 Area) (Removal Cost: \$250)



**Regloplas Model 301/24/FM65/1K/RT45 Thermolator Hot Oil Transfer Cart, S/N:**

Lot #557 (Sale Order 557 of 700)

Regloplas Model 301/24/FM65/1K/RT45 Thermolator Hot Oil Transfer Cart, S/N: 256001602 (2004); with Regloplas RT45 Controls (Ref. #: R2) (DCM3 Area) (Removal Cost: \$75)



**Sterling Model F6016DX Thermolator Hot Oil Transfer Cart, S/N: 64560; with**

Lot #558 (Sale Order 558 of 700)

Sterling Model F6016DX Thermolator Hot Oil Transfer Cart, S/N: 64560; with Barber Coleman Controls (Ref. #: S2) (DCM3 Area) (Removal Cost: \$25)



**Reis 30-Ton cap. Model SEP 6-30 Hydraulic Trim Press, S/N: 63856; with Klas**

Lot #559 (Sale Order 559 of 700)

Reis 30-Ton cap. Model SEP 6-30 Hydraulic Trim Press, S/N: 63856; with Klaschka Controls (No Fixtures) (DCM5 Area) (Removal Cost: \$400)

**10 in. Double End Pedestal Grinder (DCM5 Area) (Removal Cost: \$25)**

Lot #560 (Sale Order 560 of 700)

10 in. Double End Pedestal Grinder (DCM5 Area) (Removal Cost: \$25)

**Reis 30-Ton Cap. Model SEP 6-30 Hydraulic Trim Press, S/N: 1113000 (Parts M**

Lot #561 (Sale Order 561 of 700)

Reis 30-Ton Cap. Model SEP 6-30 Hydraulic Trim Press, S/N: 1113000 (Parts Machine) (DCM7 Area) (Removal Cost: \$400)

**K.R. Wilson 28-Ton Cap. Model DCT-28 Hydraulic Trim Press, S/N: 10926-001;**

Lot #562 (Sale Order 562 of 700)

K.R. Wilson 28-Ton Cap. Model DCT-28 Hydraulic Trim Press, S/N: 10926-001; with Proface Controls (DCM3 Area) (Removal Cost: \$400)

**Lot - (2) Shamrock Automation Tie Bar Strain Gages, in Case (Grinding Room)**

Lot #563 (Sale Order 563 of 700)

Lot - (2) Shamrock Automation Tie Bar Strain Gages, in Case (Grinding Room) (Removal Cost: N/C)

**Shamrock Automation Tie Bar Strain Gage, in Case (Grinding Room) (Removal C**

Lot #564 (Sale Order 564 of 700)

Shamrock Automation Tie Bar Strain Gage, in Case (Grinding Room) (Removal Cost: N/C)

**Lot - Trim Die Setup Tooling, with Cart (DCM3 Area) (Removal Cost: \$20)**

Lot #565 (Sale Order 565 of 700)

Lot - Trim Die Setup Tooling, with Cart (DCM3 Area) (Removal Cost: \$20)

**Industrial Innovations Central Lube System, with Legend Series LGS Control**

Lot #566 (Sale Order 566 of 700)

Industrial Innovations Central Lube System, with Legend Series LGS Controls (Storage Room) (Removal Cost: \$750)

**Industrial Innovations Central Lube System, with Legend Series LGS Control**

Lot #567 (Sale Order 567 of 700)

Industrial Innovations Central Lube System, with Legend Series LGS Controls (Storage Room) (Removal Cost: \$750)

**Regloplas Model 301/24/FM65/1K 1RT45 Thermolator Hot Oil Transfer Cart, S/N**

Lot #568 (Sale Order 568 of 700)

Regloplas Model 301/24/FM65/1K 1RT45 Thermolator Hot Oil Transfer Cart, S/N: 256005601 (2004); with Regloplas RT45 Controls (Not In Use) (Storage Room) (Removal Cost: \$75)

**Lot - (3) 2-Door Storage Cabinets, with Assorted Parts and Supplies (Storage**

Lot #569 (Sale Order 569 of 700)

Lot - (3) 2-Door Storage Cabinets, with Assorted Parts and Supplies (Storage Room) (Removal Cost: \$100)

**Parker Hydraulic Hose Fitting Crimper, with Fittings, and (2) Small Tables**

Lot #570 (Sale Order 570 of 700)

Parker Hydraulic Hose Fitting Crimper, with Fittings, and (2) Small Tables (Storage Room) (Removal Cost: \$50)

**Lot - (2) Furnace Lids (Need Repair) (Storage Room) (Removal Cost: \$25)**

Lot #571 (Sale Order 571 of 700)

Lot - (2) Furnace Lids (Need Repair) (Storage Room) (Removal Cost: \$25)



**Lot - Ceramic Fiber Blanket (3) Cases (Die Cast Room) (Removal Cost: \$25)**

Lot #571A (Sale Order 571 of 700)

Lot - Ceramic Fiber Blanket (3) Cases (Die Cast Room) (Removal Cost: \$25)



**Lot - (2) Shop Tables, 6 in. Bench Vise and Misc. Contents (Storage Room) (**

Lot #572 (Sale Order 572 of 700)

Lot - (2) Shop Tables, 6 in. Bench Vise and Misc. Contents (Storage Room) (Removal Cost: \$40)



**8 ft. Fiberglass Step Ladder (Storage Room) (Removal Cost: \$10)**

Lot #573 (Sale Order 573 of 700)

8 ft. Fiberglass Step Ladder (Storage Room) (Removal Cost: \$10)



**Lot - Shot Sleeves with Rack (Storage Room) (Removal Cost: \$50)**

Lot #574 (Sale Order 574 of 700)

Lot - Shot Sleeves with Rack (Storage Room) (Removal Cost: \$50)



**Reis 40-Ton Cap. Model TUS-90-OK-40 Hydraulic Spotting Press, S/N: 0210800;**

Lot #575 (Sale Order 575 of 700)

Reis 40-Ton Cap. Model TUS-90-OK-40 Hydraulic Spotting Press, S/N: 0210800; with 35 in. x 50 in. Table, 400-Kn Capacity (Tool Room) (Removal Cost: \$750)



**Robbins & Myers 3-Ton Cap. Overhead Bridge Crane System, with Electric Chai**

Lot #576 (Sale Order 576 of 700)

Robbins & Myers 3-Ton Cap. Overhead Bridge Crane System, with Electric Chain Hoist, 1-Ton Jet Manual Chain Hoist, Related Electrics & Rails, 20 ft. (approx.) Span (Sold - Subject to Approval) (Tool Room) (Removal Cost: \$2500)



**3-Ton Bridge Crane, with Related Rails & Electrics (Sold - Subject to Appro**

Lot #577 (Sale Order 577 of 700)

3-Ton Bridge Crane, with Related Rails & Electrics (Sold - Subject to Approval) (Die Casting Room) (Removal Cost: \$1750)



**3-Ton Bridge Crane, Related Rails & Electrics (Sold - Subject to Approval)**

Lot #578 (Sale Order 578 of 700)

3-Ton Bridge Crane, Related Rails & Electrics (Sold - Subject to Approval) (Die Casting Room) (Removal Cost: \$2000)



**Permanent Magnet Crane Lift Magnet, with Cart (Tool Room) (Removal Cost: N/**

Lot #579 (Sale Order 579 of 700)

Permanent Magnet Crane Lift Magnet, with Cart (Tool Room) (Removal Cost: N/C)



**Square-D Inline Buss Bar, 40 ft. (approx.), with (14) Junction Boxes (Tool**

Lot #580 (Sale Order 580 of 700)

Square-D Inline Buss Bar, 40 ft. (approx.), with (14) Junction Boxes (Tool Room) (Removal Cost: \$750)



**Goff 12 Cu.Ft. Model 12FD Tumble Barrel Blast Machine, S/N: 88121-50-1739 (**

Lot #581 (Sale Order 581 of 700)

Goff 12 Cu.Ft. Model 12FD Tumble Barrel Blast Machine, S/N: 88121-50-1739 (1999); with Reclaim System, Control Console, Allen-Bradley 1336 Drive (with Spare Belt on 2nd Floor) (Vibratory Finishing Room) (Removal Cost: \$2000)



**Donaldson Torit 7-1/2 HP Model 2DF4 Canister Type Dust Collector, S/N: 2420**

Lot #581A (Sale Order 581 of 700)

Donaldson Torit 7-1/2 HP Model 2DF4 Canister Type Dust Collector, S/N: 242025 (Used in Conjunction with Lot # 581) (Outside) (Removal Cost: \$200)

**Titan Industries Hydraulic Tote/Cart Dumper, S/N: 88385; with 14 in. x 30 f**

Lot #582 (Sale Order 582 of 700)

Titan Industries Hydraulic Tote/Cart Dumper, S/N: 88385; with 14 in. x 30 ft. (approx.) Inclined Power Belt Conveyor, Hydraulic Pump Unit (Vibratory Finishing Room) (Removal Cost: \$450)

**Speedaire Model 4ME98A Vertical Tank Mounted Air Compressor, S/N: 00037/L9/**

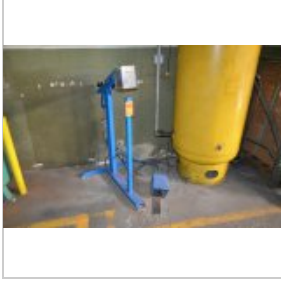
Lot #583 (Sale Order 583 of 700)

Speedaire Model 4ME98A Vertical Tank Mounted Air Compressor, S/N: 00037/L9/16/13 (2013); 60-Gal. Capacity, 140-PSI, (Vibratory Finishing Room) (Removal Cost: \$75)

**Air Receiving Tank (2000) (Vibratory Finishing Room) (Removal Cost: \$75)**

Lot #584 (Sale Order 584 of 700)

Air Receiving Tank (2000) (Vibratory Finishing Room) (Removal Cost: \$75)

**Josef Kihlberg Model B561PN Box Stapler, S/N: 200711 (Vibratory Finishing R**

Lot #585 (Sale Order 585 of 700)

Josef Kihlberg Model B561PN Box Stapler, S/N: 200711 (Vibratory Finishing Room) (Removal Cost: \$25)

**Wheelabrator Model B4-210 Spinner Hanger Shot Blaster, S/N: 300200 (1989) (**

Lot #586 (Sale Order 586 of 700)

Wheelabrator Model B4-210 Spinner Hanger Shot Blaster, S/N: 300200 (1989) (Vibratory Finishing Room) (Removal Cost: \$1000)

**28 in. x 72 in. Shop Table (No Contents) (Vibratory Finishing Room) (Remova**

Lot #587 (Sale Order 587 of 700)

28 in. x 72 in. Shop Table (No Contents) (Vibratory Finishing Room) (Removal Cost: \$20)

**35 in. x 38 in. Heavy Duty Portable Shop Cart (Vibratory Finishing Room) (R**

Lot #588 (Sale Order 588 of 700)

35 in. x 38 in. Heavy Duty Portable Shop Cart (Vibratory Finishing Room) (Removal Cost: N/C)

**36 in. x 72 in. Shop Table (Vibratory Finishing Room) (Removal Cost: \$20)**

Lot #589 (Sale Order 589 of 700)

36 in. x 72 in. Shop Table (Vibratory Finishing Room) (Removal Cost: \$20)

**Sweco 20 Cu.Ft. Model FMS20LR Vibratory Tub Finisher (Vibratory Finishing R**

Lot #591 (Sale Order 591 of 700)

Sweco 20 Cu.Ft. Model FMS20LR Vibratory Tub Finisher (Vibratory Finishing Room) (Removal Cost: \$600)

**Sweco 18 in. x 10 ft. 6-Heater Dryer (Vibratory Finishing Room) (Removal Co**

Lot #592 (Sale Order 592 of 700)

Sweco 18 in. x 10 ft. 6-Heater Dryer (Vibratory Finishing Room) (Removal Cost: \$250)

**72 in. x 72 in. Welding Table, with (2) 5 in. & 6 in. Wilton Vises, with Co**

Lot #593 (Sale Order 593 of 700)

72 in. x 72 in. Welding Table, with (2) 5 in. &amp; 6 in. Wilton Vises, with Contents Under Table, No Contents on Top of Table or on Bottom Shelf) (Die Repair) (Removal Cost: \$50)

**Die Repair Station, Consisting of: Die Parts and Work Bench (No Power Tools**

Lot #594 (Sale Order 594 of 700)

Die Repair Station, Consisting of: Die Parts and Work Bench (No Power Tools or Fixtures) (Die Repair) (Removal Cost: \$75)





**Lot - Shop Bench, to Include: (2) 7-Drawer Tool Cabinets, (3) Portable Tool**

Lot #595 (Sale Order 595 of 700)

Lot - Shop Bench, to Include: (2) 7-Drawer Tool Cabinets, (3) Portable Tool Cabinets, Drum Top Parts Washer, Bench Top, Misc. Contents of Tool Cabinets (No Dies or Fixtures) (Die Repair) (Removal Cost: \$75)



**Lot - 8 Lista Wall Mount Cabinets, with Misc. Contents (Die Repair) (Remova**

Lot #596 (Sale Order 596 of 700)

Lot - 8 Lista Wall Mount Cabinets, with Misc. Contents (Die Repair) (Removal Cost: \$80)



**Heavy Duty Portable Cart (Die Repair) (Removal Cost: \$25)**

Lot #597 (Sale Order 597 of 700)

Heavy Duty Portable Cart (Die Repair) (Removal Cost: \$25)



**24 in. x 36 in. Die Lift Cart (Die Repair) (Removal Cost: N/C)**

Lot #598 (Sale Order 598 of 700)

24 in. x 36 in. Die Lift Cart (Die Repair) (Removal Cost: N/C)



**18 in. x 74 in. Die Table (No Dies or Fixtures) (Die Repair) (Removal Cost:**

Lot #599 (Sale Order 599 of 700)

18 in. x 74 in. Die Table (No Dies or Fixtures) (Die Repair) (Removal Cost: \$20)



**Lot - Steel Stock with Steel Storage Rack (No Dies or Fixtures) (Die Repair**

Lot #600 (Sale Order 600 of 700)

Lot - Steel Stock with Steel Storage Rack (No Dies or Fixtures) (Die Repair) (Removal Cost: \$20)



**Lot - Assorted Stock and Parts, in Parts Pans and with (2) Racks (No Dies o**

Lot #600A (Sale Order 600 of 700)

Lot - Assorted Stock and Parts, in Parts Pans and with (2) Racks (No Dies or Fixtures) (Grinding Room) (Removal Cost: \$50)



**Lot - Inventory, on Cart (No Cart) (Grinding Room) (Removal Cost: \$25)**

Lot #600B (Sale Order 600 of 700)

Lot - Inventory, on Cart (No Cart) (Grinding Room) (Removal Cost: \$25)



**Lot - Inventory, with Table and Pigeon Hole Rack (Grinding Room) (Removal C**

Lot #600C (Sale Order 600 of 700)

Lot - Inventory, with Table and Pigeon Hole Rack (Grinding Room) (Removal Cost: \$50)



**Lot - Inventory, with (4) Tier Cantilever Rack (Tool Room) (Removal Cost: \$**

Lot #600D (Sale Order 600 of 700)

Lot - Inventory, with (4) Tier Cantilever Rack (Tool Room) (Removal Cost: \$75)



**Lot - Inventory, Consisting of: Assorted Tool Stock, Aluminum, Copper, Bro**

Lot #600E (Sale Order 600 of 700)

Lot - Inventory, Consisting of: Assorted Tool Stock, Aluminum, Copper, Bronze, Round, Cold Roll, Hot Roll, Hardened Steel, Etc. (No Racks) (Tool Room) (Removal Cost: \$75)



**Lot - (2) 4-Drawer Tool Cabinets (No Contents) (Tool Room) (Removal Cost: \$**

Lot #600F (Sale Order 600 of 700)

Lot - (2) 4-Drawer Tool Cabinets (No Contents) (Tool Room) (Removal Cost: \$75)



**Lot - Inventory on Rack (No Dies, Fixtures or Rack) (Tool Room) (Removal Co**

Lot #600G (Sale Order 600 of 700)

Lot - Inventory on Rack (No Dies, Fixtures or Rack) (Tool Room) (Removal Cost: \$75)



**4-Shelf Heavy Duty Rack (No Contents) (Vibratory Finishing Room) (Removal C**

Lot #600H (Sale Order 600 of 700)

4-Shelf Heavy Duty Rack (No Contents) (Vibratory Finishing Room) (Removal Cost: \$25)



**Lot - Assorted Bar Stock & Rack (Vibratory Finishing Room) (Removal Cost: \$**

Lot #600I (Sale Order 600 of 700)

Lot - Assorted Bar Stock & Rack (Vibratory Finishing Room) (Removal Cost: \$50)



**Kaeser 100-HP Model CS120 Rotary Screw Type Air Compressor, S/N: 120412; Ra**

Lot #601 (Sale Order 601 of 700)

Kaeser 100-HP Model CS120 Rotary Screw Type Air Compressor, S/N: 120412; Rated at 390-CFM, 25,709 Service Hours (at Time of description) (Outside) (Removal Cost: \$450)



**Air Receiving Tank (Outside) (Removal Cost: \$100)**

Lot #602 (Sale Order 602 of 700)

Air Receiving Tank (Outside) (Removal Cost: \$100)



**Craftsman 7-HP Vertical Tank Mounted Air Compressor, 100-PSI, 240-V, 17.4-S**

Lot #603 (Sale Order 603 of 700)

Craftsman 7-HP Vertical Tank Mounted Air Compressor, 100-PSI, 240-V, 17.4-SCFM (Outside) (Removal Cost: \$75)

**Prochem Waste Water Treatment System, to Include: Poly Holding Tank, Poly M**

Lot #606 (Sale Order 606 of 700)

Prochem Waste Water Treatment System, to Include: Poly Holding Tank, Poly Mixing Tank, Sperry Filter Press with (23) Filters, 4-Batch Steel Cleaning Tank, 100 Max. Pressure, Small Poly Holding Tank, Related Pumps and Controls (Outside) (Removal Cost: \$4500)

**Kaeser 40-HP Model BS50 Rotary Screw Type Air Compressor, S/N: 1004 ; 91,20**

Lot #607 (Sale Order 607 of 700)

Kaeser 40-HP Model BS50 Rotary Screw Type Air Compressor, S/N: 1004 ; 91,202 Hours (at Time of Description) (2nd Floor) (Removal Cost: \$400)

**Air Receiving Tank, 200-PSI (2nd Floor) (Removal Cost: \$100)**

Lot #608 (Sale Order 608 of 700)

Air Receiving Tank, 200-PSI (2nd Floor) (Removal Cost: \$100)

**Air Receiving Tank, 200-PSI (2nd Floor) (Removal Cost: \$100)**

Lot #609 (Sale Order 609 of 700)

Air Receiving Tank, 200-PSI (2nd Floor) (Removal Cost: \$100)

**Kaeser Model TF251 Refrigerated Air Dryer, S/N: 1004 (2007); Rated at 300 P**

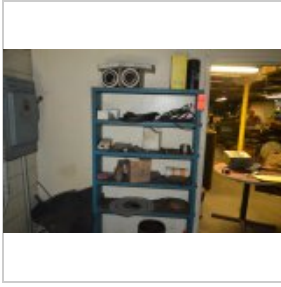
Lot #610 (Sale Order 610 of 700)

Kaeser Model TF251 Refrigerated Air Dryer, S/N: 1004 (2007); Rated at 300 Psi Max. Working Pressure (Refrigeration System), 230 Psi Max. Working Pressure (Air System), 460-V, R-134a Refrigerant (2nd Floor) (Removal Cost: \$450)

**Deltech Model Pyramid 2000 Air Dryer (2007) (2nd Floor) (Removal Cost: \$100)**

Lot #611 (Sale Order 611 of 700)

Deltech Model Pyramid 2000 Air Dryer (2007) (2nd Floor) (Removal Cost: \$100)



**Lot - Assorted Air Compressor Parts, with Shelf Unit (2nd Floor) (Removal C**

Lot #612 (Sale Order 612 of 700)

Lot - Assorted Air Compressor Parts, with Shelf Unit (2nd Floor) (Removal Cost: \$25)



**Atlas Copco 25-HP Model RS Horizontal Tank Mounted Rotary Screw Type Air Co**

Lot #613 (Sale Order 613 of 700)

Atlas Copco 25-HP Model RS Horizontal Tank Mounted Rotary Screw Type Air Compressor (2nd Floor) (Removal Cost: \$250)



**Komatsu 3,000 lb. Cap. Model FG35SI TYPE G LP Fork Lift Truck, S/N: 85247;**

Lot #616 (Sale Order 616 of 700)

Komatsu 3,000 lb. Cap. Model FG35SI TYPE G LP Fork Lift Truck, S/N: 85247; with 3-Stage Mast, 185 in. Lift Height, Side Shift, Rotating Forks, Solid Tires (No Propane Tank) (Vibratory Finishing Room) (Removal Cost: \$50)



**Hyster 4,750 lb. Cap. Model S50XL LP Fork Lift Truck, S/N: C187V148715; wit**

Lot #617 (Sale Order 617 of 700)

Hyster 4,750 lb. Cap. Model S50XL LP Fork Lift Truck, S/N: C187V148715; with Side Shift, Solid Tires, Rotating Fork Attachment (No Propane Tank) (Ref. #: #2) (Vibratory Finishing Room) (Removal Cost: \$50)



**Mitsubishi 5,000 lb. Cap. Model FGC25 LP Fork Lift Truck, S/N: F82-50485; w**

Lot #618 (Sale Order 618 of 700)

Mitsubishi 5,000 lb. Cap. Model FGC25 LP Fork Lift Truck, S/N: F82-50485; with Solid Tires (No Propane Tank) (Ref. #: #3) (Vibratory Finishing Room) (Removal Cost: \$50)



**Lot - (2) Picnic Tables (Outside) (Removal Cost: N/C)**

Lot #619 (Sale Order 619 of 700)

Lot - (2) Picnic Tables (Outside) (Removal Cost: N/C)



**Lot - (2) Picnic Tables (Outside) (Removal Cost: N/C)**

Lot #619A (Sale Order 619 of 700)

Lot - (2) Picnic Tables (Outside) (Removal Cost: N/C)



**Lot - Hilman 40-Ton Roller Set, and (2) Steel J-Bars (Vibratory Finishing R**

Lot #620 (Sale Order 620 of 700)

Lot - Hilman 40-Ton Roller Set, and (2) Steel J-Bars (Vibratory Finishing Room) (Removal Cost: N/C)



**Lot - (48) 32 in. x 40 in. x 28 in. Collapsible Wire Baskets (4 Rows) (Outs**

Lot #621 (Sale Order 621 of 700)

Lot - (48) 32 in. x 40 in. x 28 in. Collapsible Wire Baskets (4 Rows) (Outside) (Removal Cost: \$100)



**Lot - (46) 32 in. x 40 in. x 28 in. Collapsible Wire Baskets (4 Rows) (Outs**

Lot #622 (Sale Order 622 of 700)

Lot - (46) 32 in. x 40 in. x 28 in. Collapsible Wire Baskets (4 Rows) (Outside) (Removal Cost: \$100)



**Lot - Assorted Collapsible Wire Baskets (Outside North Side of Fenced Area)**

Lot #623 (Sale Order 623 of 700)

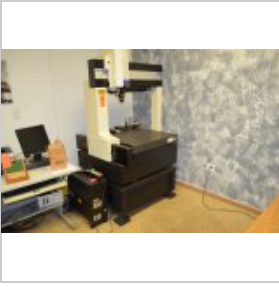
Lot - Assorted Collapsible Wire Baskets (Outside North Side of Fenced Area) (Removal Cost: \$100)



**Lot - (22) (approx.) Assorted Size Collapsible Wire Baskets (No Contents) (**

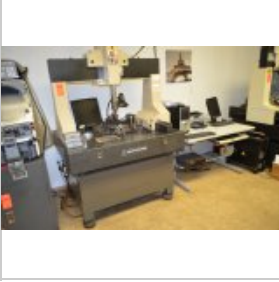
Lot #624 (Sale Order 624 of 700)

Lot - (22) (approx.) Assorted Size Collapsible Wire Baskets (No Contents) (In CNC Room and Die Cast Room) (Removal Cost: \$100)

**Brown & Sharpe Model Micro Xcel PFX Coordinate Measuring Machine, S/N: 1005**

Lot #625 (Sale Order 625 of 700)

Brown & Sharpe Model Micro Xcel PFX Coordinate Measuring Machine, S/N: 1005-070 (2005); with 33 in. x 36 in. Table, Renishaw PH-9 Probe (Inspection Office) (Removal Cost: \$1800)

**Mitutoyo Model B-231 Coordinate Measuring Machine, S/N: 8212404; with Renis**

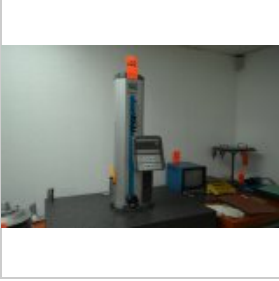
Lot #626 (Sale Order 626 of 700)

Mitutoyo Model B-231 Coordinate Measuring Machine, S/N: 8212404; with Renishaw MiP Probe, Table, and Related Contents (No Fixtures) (Inspection Office) (Removal Cost: \$1200)

**Renishaw Probe Tips, with Case (Inspection Office) (Removal Cost: N/C)**

Lot #627 (Sale Order 627 of 700)

Renishaw Probe Tips, with Case (Inspection Office) (Removal Cost: N/C)

**Tesa Hite 400 Digital Height Gage (Inspection Office) (Removal Cost: \$150)**

Lot #628 (Sale Order 628 of 700)

Tesa Hite 400 Digital Height Gage (Inspection Office) (Removal Cost: \$150)

**Tru-Stone 24 in. x 36 in. Black Granite Surface Plate, S/N: 10317 (Inspecti**

Lot #629 (Sale Order 629 of 700)

Tru-Stone 24 in. x 36 in. Black Granite Surface Plate, S/N: 10317 (Inspection Office) (Removal Cost: \$50)

**Mitutoyo Model SURF TEST SJ210 Digital Surface Gage, with Granite Surface P**

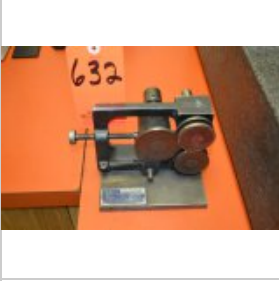
Lot #630 (Sale Order 630 of 700)

Mitutoyo Model SURF TEST SJ210 Digital Surface Gage, with Granite Surface Plate (Inspection Office) (Removal Cost: \$25)

**Fowler 10X Microscope (Inspection Office) (Removal Cost: \$25)**

Lot #631 (Sale Order 631 of 700)

Fowler 10X Microscope (Inspection Office) (Removal Cost: \$25)

**St. Mary Model 525M, Spin Roll S/N: 707 (Inspection Office) (Removal Cost:**

Lot #632 (Sale Order 632 of 700)

St. Mary Model 525M, Spin Roll S/N: 707 (Inspection Office) (Removal Cost: N/C)

**O'Haus Precision Plus Digital Scale (Inspection Office) (Removal Cost: N/C)**

Lot #633 (Sale Order 633 of 700)

O'Haus Precision Plus Digital Scale (Inspection Office) (Removal Cost: N/C)

**American Optical Camera Inspection System, with Monitor (Inspection Office)**

Lot #634 (Sale Order 634 of 700)

American Optical Camera Inspection System, with Monitor (Inspection Office) (Removal Cost: \$25)

**Lot - 4-Drawer Pin Gage Set, with Case and Shop Cabinet (Inspection Office)**

Lot #635 (Sale Order 635 of 700)

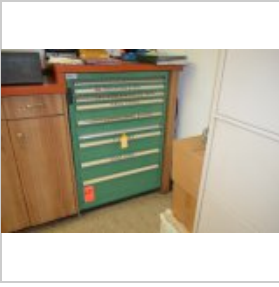
Lot - 4-Drawer Pin Gage Set, with Case and Shop Cabinet (Inspection Office) (Removal Cost: \$50)

**Lot - 4-Door/4-Drawer Shop Cabinet (Inspection Office) (Removal Cost: \$50)**

Lot #636 (Sale Order 636 of 700)

Lot - 4-Door/4-Drawer Shop Cabinet (Inspection Office) (Removal Cost: \$50)



**Lot - Lista 9-Drawer Tool Cabinet, with Contents of Drawers Only (Inspection Office)**

Lot #637 (Sale Order 637 of 700)

Lot - Lista 9-Drawer Tool Cabinet, with Contents of Drawers Only (Inspection Office) (Removal Cost: \$50)

**Mitutoyo 6 in. - 7 in. O.D. Micrometer (Inspection Office) (Removal Cost: N/C)**

Lot #638 (Sale Order 638 of 700)

Mitutoyo 6 in. - 7 in. O.D. Micrometer (Inspection Office) (Removal Cost: N/C)

**Mitutoyo 4 in. - 5 in. O.D. Micrometer (Inspection Office) (Removal Cost: N/C)**

Lot #639 (Sale Order 639 of 700)

Mitutoyo 4 in. - 5 in. O.D. Micrometer (Inspection Office) (Removal Cost: N/C)

**Gage Master Model GMX Optical Comparator, with Portable Cabinet (Inspection Office)**

Lot #640 (Sale Order 640 of 700)

Gage Master Model GMX Optical Comparator, with Portable Cabinet (Inspection Office) (Removal Cost: \$100)

**Fowler in./mm Digital Height Gage (Inspection Office) (Removal Cost: N/C)**

Lot #641 (Sale Order 641 of 700)

Fowler in./mm Digital Height Gage (Inspection Office) (Removal Cost: N/C)

**Mitutoyo 0.7 in. - 1.4 in. Dial Bore Gage (Inspection Office) (Removal Cost: N/C)**

Lot #642 (Sale Order 642 of 700)

Mitutoyo 0.7 in. - 1.4 in. Dial Bore Gage (Inspection Office) (Removal Cost: N/C)



**Starrett 1.500 in. - 3.000 in. Dial Bore Gage (Inspection Office) (Removal)**

Lot #643 (Sale Order 643 of 700)

Starrett 1.500 in. - 3.000 in. Dial Bore Gage (Inspection Office) (Removal Cost: N/C)



**Mitutoyo Model 526-381 Dial Bore Gage Set, .79998 in. - 1.14994 Master Ring**

Lot #644 (Sale Order 644 of 700)

Mitutoyo Model 526-381 Dial Bore Gage Set, .79998 in. - 1.14994 Master Ring Gages (Inspection Office) (Removal Cost: N/C)



**Lot - Assorted Pin Gages (Inspection Office) (Removal Cost: N/C)**

Lot #645 (Sale Order 645 of 700)

Lot - Assorted Pin Gages (Inspection Office) (Removal Cost: N/C)



**Lot - (5) Meyer Pin Gage Sets (Inspection Office) (Removal Cost: N/C)**

Lot #646 (Sale Order 646 of 700)

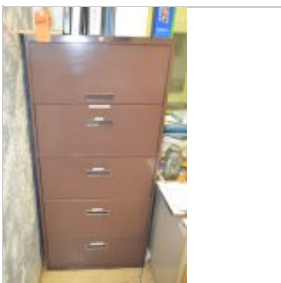
Lot - (5) Meyer Pin Gage Sets (Inspection Office) (Removal Cost: N/C)



**Lot - Assorted Inspection Gages (Inspection Office) (Removal Cost: N/C)**

Lot #647 (Sale Order 647 of 700)

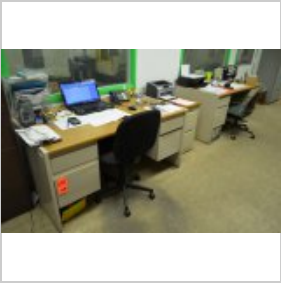
Lot - Assorted Inspection Gages (Inspection Office) (Removal Cost: N/C)



**5-Drawer Lateral File Cabinet, in Inspection Office (Inspection Office) (Re**

Lot #649 (Sale Order 649 of 700)

5-Drawer Lateral File Cabinet, in Inspection Office (Inspection Office) (Removal Cost: \$20)

**Lot - (2) Desks, (2) Chairs, (1) 2-Drawer File Cabinet and (2) Desk Top Pri**

Lot #650 (Sale Order 650 of 700)

Lot - (2) Desks, (2) Chairs, (1) 2-Drawer File Cabinet and (2) Desk Top Printers (No Laptop or Personal Property) (Inspection Office) (Removal Cost: \$75)

**4-Drawer Lateral File Cabinet (Inspection Office) (Removal Cost: \$20)**

Lot #651 (Sale Order 651 of 700)

4-Drawer Lateral File Cabinet (Inspection Office) (Removal Cost: \$20)

**Lot - Miscellaneous in Corner Including: Led Light Fixture, 36 in. Ruler, C**

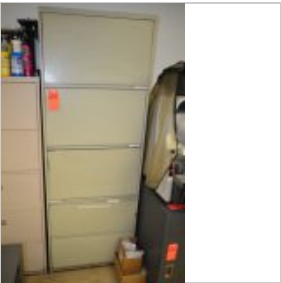
Lot #652 (Sale Order 652 of 700)

Lot - Miscellaneous in Corner Including: Led Light Fixture, 36 in. Ruler, Cork Boards Etc. (Inspection Office) (Removal Cost: N/C)

**Lot - (2) 5-Drawer Lateral File Cabinets (Inspection Office) (Removal Cost:**

Lot #653 (Sale Order 653 of 700)

Lot - (2) 5-Drawer Lateral File Cabinets (Inspection Office) (Removal Cost: \$30)

**Lot - (1) 5-Drawer Lateral File Cabinet (Inspection Office) (Removal Cost:**

Lot #654 (Sale Order 654 of 700)

Lot - (1) 5-Drawer Lateral File Cabinet (Inspection Office) (Removal Cost: \$20)

**Elbo Controlli Model LYNDEx E238R Tool Presetter, S/N: 6792 (2005) (Inspect**

Lot #655 (Sale Order 655 of 700)

Elbo Controlli Model LYNDEx E238R Tool Presetter, S/N: 6792 (2005) (Inspection Office) (Removal Cost: \$100)



**Lot - (2) Drill Indexes, with Drill Bits (Inspection Office) (Removal Cost:**

Lot #656 (Sale Order 656 of 700)

Lot - (2) Drill Indexes, with Drill Bits (Inspection Office) (Removal Cost: N/C)



**Lot - Lista Tool Cabinet, Taps, Reamers, Drills, End Mills, Lateral File Ca**

Lot #657 (Sale Order 657 of 700)

Lot - Lista Tool Cabinet, Taps, Reamers, Drills, End Mills, Lateral File Cabinet, Wood Top, Etc. (Inspection Office) (Removal Cost: \$50)



**Lot - 2-Door Cabinet, with Contents (Inspection Office) (Removal Cost: \$50)**

Lot #658 (Sale Order 658 of 700)

Lot - 2-Door Cabinet, with Contents (Inspection Office) (Removal Cost: \$50)



**Lot - Secondary Office: Desks, Chairs, Refrigerator (Secondary Office) (Re**

Lot #659 (Sale Order 659 of 700)

Lot - Secondary Office: Desks, Chairs, Refrigerator (Secondary Office) (Removal Cost: \$50)



**Mitutoyo Model PH-350 Optical Comparator, S/N: 7129 (Tool Room) (Removal Co**

Lot #660 (Sale Order 660 of 700)

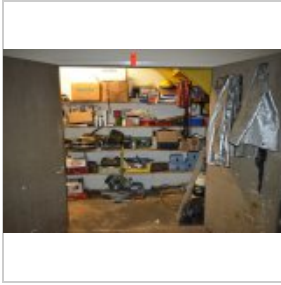
Mitutoyo Model PH-350 Optical Comparator, S/N: 7129 (Tool Room) (Removal Cost: \$100)



**Lot - Maintenance Parts, Supplies and Furniture (No Machine Manuals) (Maint**

Lot #661 (Sale Order 661 of 700)

Lot - Maintenance Parts, Supplies and Furniture (No Machine Manuals) (Maint. Office) (Removal Cost: \$100)



**Lot - Assorted Maintenance Tools and Supplies, in Double Door Storage Room**

Lot #661A (Sale Order 661 of 700)

Lot - Assorted Maintenance Tools and Supplies, in Double Door Storage Room (CNC Storage Room) (Removal Cost: \$150)



**Astral 36 in. x 48 in. x 6 in. Granite Surface Plate, with Lighted Stand (N**

Lot #662 (Sale Order 662 of 700)

Astral 36 in. x 48 in. x 6 in. Granite Surface Plate, with Lighted Stand (No Contents) (Tool Room) (Removal Cost: \$75)



**Check Gauge, with Sony Digital Read-Out (Tool Room) (Removal Cost: N/C)**

Lot #663 (Sale Order 663 of 700)

Check Gauge, with Sony Digital Read-Out (Tool Room) (Removal Cost: N/C)



**Mitutoyo 18 in. Dial Height Gage (Tool Room) (Removal Cost: N/C)**

Lot #664 (Sale Order 664 of 700)

Mitutoyo 18 in. Dial Height Gage (Tool Room) (Removal Cost: N/C)



**Mitutoyo 12 in. Dial Height Gage (Tool Room) (Removal Cost: N/C)**

Lot #665 (Sale Order 665 of 700)

Mitutoyo 12 in. Dial Height Gage (Tool Room) (Removal Cost: N/C)



**Hermann Schmidt Master Check Gauge (Tool Room) (Removal Cost: N/C)**

Lot #666 (Sale Order 666 of 700)

Hermann Schmidt Master Check Gauge (Tool Room) (Removal Cost: N/C)

**Astral 18 in. x 24 in. Granite Surface Plate, S/N: 6646 (Tool Room) (Removal Cost: \$75)**

Lot #667 (Sale Order 667 of 700)

Astral 18 in. x 24 in. Granite Surface Plate, S/N: 6646 (Tool Room) (Removal Cost: \$75)

**Astral 18 in. x 24 in. Granite Surface Plate, S/N: 6644 (Tool Room) (Removal Cost: \$75)**

Lot #668 (Sale Order 668 of 700)

Astral 18 in. x 24 in. Granite Surface Plate, S/N: 6644 (Tool Room) (Removal Cost: \$75)

**Astral 18 in. x 24 in. Granite Surface Plate, S/N: 6645 (Tool Room) (Removal Cost: \$75)**

Lot #669 (Sale Order 669 of 700)

Astral 18 in. x 24 in. Granite Surface Plate, S/N: 6645 (Tool Room) (Removal Cost: \$75)

**Lot - Burton Hardness Tester, S/N: 11060; with Tooling (Tool Room) (Removal Cost: \$25)**

Lot #670 (Sale Order 670 of 700)

Lot - Burton Hardness Tester, S/N: 11060; with Tooling (Tool Room) (Removal Cost: \$25)

**Mitutoyo 10-Piece Micrometer Set, with Case (Tool Room) (Removal Cost: N/C)**

Lot #671 (Sale Order 671 of 700)

Mitutoyo 10-Piece Micrometer Set, with Case (Tool Room) (Removal Cost: N/C)

**Mitutoyo 9-Piece Micrometer Set, with Standards and Case (Tool Room) (Removal Cost: N/C)**

Lot #672 (Sale Order 672 of 700)

Mitutoyo 9-Piece Micrometer Set, with Standards and Case (Tool Room) (Removal Cost: N/C)

**Gage Block Set (Tool Room) (Removal Cost: N/C)**

Lot #673 (Sale Order 673 of 700)

Gage Block Set (Tool Room) (Removal Cost: N/C)

**Lot - (3) Depth Micrometers (Tool Room) (Removal Cost: N/C)**

Lot #674 (Sale Order 674 of 700)

Lot - (3) Depth Micrometers (Tool Room) (Removal Cost: N/C)

**Mitutoyo 0.01 - 600 mm/.0005 - 24 in. Model CF DIGIMATIC Digital Caliper (**

Lot #675 (Sale Order 675 of 700)

Mitutoyo 0.01 - 600 mm/.0005 - 24 in. Model CF DIGIMATIC Digital Caliper (Tool Room) (Removal Cost: N/C)

**18 in. Vernier Caliper (Tool Room) (Removal Cost: N/C)**

Lot #676 (Sale Order 676 of 700)

18 in. Vernier Caliper (Tool Room) (Removal Cost: N/C)

**Lot - (3) Calipers, to Include: (2) 12 in. Dial Calipers, and (1) 8 in. Dia**

Lot #677 (Sale Order 677 of 700)

Lot - (3) Calipers, to Include: (2) 12 in. Dial Calipers, and (1) 8 in. Dial Caliper (Tool Room) (Removal Cost: N/C)

**Lot - (5) Pin Gage Sets (Tool Room) (Removal Cost: N/C)**

Lot #678 (Sale Order 678 of 700)

Lot - (5) Pin Gage Sets (Tool Room) (Removal Cost: N/C)



**12 in. I.D. Micrometer Set (Tool Room) (Removal Cost: N/C)**

Lot #679 (Sale Order 679 of 700)

12 in. I.D. Micrometer Set (Tool Room) (Removal Cost: N/C)



**Starrett Depth Micrometer Set (Tool Room) (Removal Cost: N/C)**

Lot #680 (Sale Order 680 of 700)

Starrett Depth Micrometer Set (Tool Room) (Removal Cost: N/C)



**Precision Level (Tool Room) (Removal Cost: N/C)**

Lot #681 (Sale Order 681 of 700)

Precision Level (Tool Room) (Removal Cost: N/C)



**Gage Block Set (Tool Room) (Removal Cost: N/C)**

Lot #682 (Sale Order 682 of 700)

Gage Block Set (Tool Room) (Removal Cost: N/C)



**Lot - (3) Inspection Gages, to Include: (2) O.D. Micrometers; 5 in. - 6 in.**

Lot #683 (Sale Order 683 of 700)

Lot - (3) Inspection Gages, to Include: (2) O.D. Micrometers; 5 in. - 6 in., and 0 in. - 1 in., and (1) 1.2 in. - 2.2 in. Dial Caliper Gage (Tool Room) (Removal Cost: N/C)



**Lot - Go/No Go Gages (Tool Room) (Removal Cost: N/C)**

Lot #684 (Sale Order 684 of 700)

Lot - Go/No Go Gages (Tool Room) (Removal Cost: N/C)



**Single Door Tool Cabinet, with Contents (Tool Crib) (Removal Cost: \$25)**

Lot #690 (Sale Order 690 of 700)

Single Door Tool Cabinet, with Contents (Tool Crib) (Removal Cost: \$25)

**Lot - (4) Multi-Drawer Tool Cabinets, with Core Pins, Ejector Pins, Parts,**

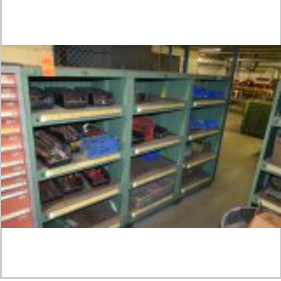
Lot #691 (Sale Order 691 of 700)

Lot - (4) Multi-Drawer Tool Cabinets, with Core Pins, Ejector Pins, Parts, Hardware Etc. (Tool Crib) (Removal Cost: \$75)

**Lot - (4) Multi-Drawer Tool Cabinets, with Die Springs, Set Screws, Metric**

Lot #692 (Sale Order 692 of 700)

Lot - (4) Multi-Drawer Tool Cabinets, with Die Springs, Set Screws, Metric Pins, Etc. (Tool Crib) (Removal Cost: \$50)

**Lot - (5) 4-Drawer Tool Cabinets, with Misc. Contents (Tool Crib) (Removal**

Lot #693 (Sale Order 693 of 700)

Lot - (5) 4-Drawer Tool Cabinets, with Misc. Contents (Tool Crib) (Removal Cost: \$75)

**Lot - (5) 2-Door Wall Mount Cabinets, with Misc. Contents (Tool Crib) (Remo**

Lot #694 (Sale Order 694 of 700)

Lot - (5) 2-Door Wall Mount Cabinets, with Misc. Contents (Tool Crib) (Removal Cost: \$100)

**6-Drawer Portable Tool Cabinet, with Misc. Contents (Tool Crib) (Removal Co**

Lot #695 (Sale Order 695 of 700)

6-Drawer Portable Tool Cabinet, with Misc. Contents (Tool Crib) (Removal Cost: N/C)



**Lot - Computer Cabinet, with Stool (Tool Crib) (Removal Cost: \$25)**

Lot #696 (Sale Order 696 of 700)

Lot - Computer Cabinet, with Stool (Tool Crib) (Removal Cost: \$25)



**Lot - Large Qty of Spray Head Parts, Hardware, Shop Tables, Bench Vise, Etc**

Lot #697 (Sale Order 697 of 700)

Lot - Large Qty of Spray Head Parts, Hardware, Shop Tables, Bench Vise, Etc. (Grinding Room) (Removal Cost: \$100)



**Lot - Assorted Carts, with Contents (Die Cast Area) (Removal Cost: \$25)**

Lot #698 (Sale Order 698 of 700)

Lot - Assorted Carts, with Contents (Die Cast Area) (Removal Cost: \$25)



**Lot - Housekeeping Equipment, with Racks (Die Cast Area) (Removal Cost: \$25)**

Lot #699 (Sale Order 699 of 700)

Lot - Housekeeping Equipment, with Racks (Die Cast Area) (Removal Cost: \$25)



**Megamat Parts Retrieval System, S/N: 6903; with Large Qty. of Hydraulic, E**

Lot #700 (Sale Order 700 of 700)

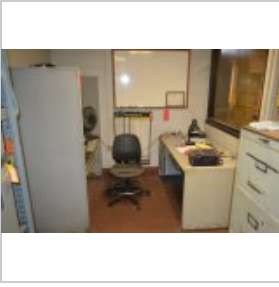
Megamat Parts Retrieval System, S/N: 6903; with Large Qty. of Hydraulic, Electrical, Water, Air Fixtures, Misc. Components (Die Cast Area) (Removal Cost: \$900)



**2-Door Tool Cabinet, with Shelves and (8) Drawers and Contents Including: T**

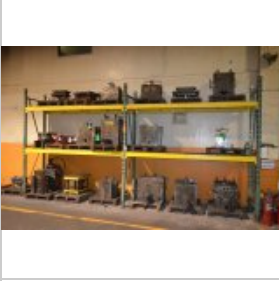
Lot #701 (Sale Order 701 of 700)

2-Door Tool Cabinet, with Shelves and (8) Drawers and Contents Including: Taps, Drill Bits, End Mills, Etc. (Die Repair Shop) (Removal Cost: \$75)

**Assorted Office Furniture, in Die Repair Office (Die Repair Shop) (Removal**

Lot #702 (Sale Order 702 of 700)

Assorted Office Furniture, in Die Repair Office (Die Repair Shop) (Removal Cost: \$75)

**Lot - (2) Sections: 31 in. x 108 in. x 9 ft-8 in. High Pallet Rack (No Dies**

Lot #703 (Sale Order 703 of 700)

Lot - (2) Sections: 31 in. x 108 in. x 9 ft-8 in. High Pallet Rack (No Dies or Contents) (Die Cast Room) (Removal Cost: \$75)

**Lot - Office Furniture in Room (Die Cast Area Offices) (Removal Cost: \$50)**

Lot #704 (Sale Order 704 of 700)

Lot - Office Furniture in Room (Die Cast Area Offices) (Removal Cost: \$50)

**Lot - Office Furniture in Room (Die Cast Area Offices) (Removal Cost: \$50)**

Lot #705 (Sale Order 705 of 700)

Lot - Office Furniture in Room (Die Cast Area Offices) (Removal Cost: \$50)

**Lot - First Aid Room Furniture and Supplies (Die Cast Area Offices) (Remova**

Lot #706 (Sale Order 706 of 700)

Lot - First Aid Room Furniture and Supplies (Die Cast Area Offices) (Removal Cost: \$50)

**Lot - Assorted Shelf Units (No Contents) (Receiving Area) (Removal Cost: \$2**

Lot #707 (Sale Order 707 of 700)

Lot - Assorted Shelf Units (No Contents) (Receiving Area) (Removal Cost: \$25)

**Shop Table with 6-Drawer Tool Cabinet, Attached Light Fixture (Receiving Ar**

Lot #708 (Sale Order 708 of 700)

Shop Table with 6-Drawer Tool Cabinet, Attached Light Fixture (Receiving Area) (Removal Cost: \$25)

**Toledo Model 8136 Digital Scale Read-Out (No Platform) (Not In Use) (Receiv**

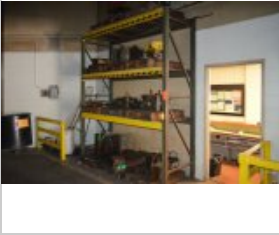
Lot #709 (Sale Order 709 of 700)

Toledo Model 8136 Digital Scale Read-Out (No Platform) (Not In Use) (Receiving Area) (Removal Cost: \$25)

**Lot - Shop Table, and (2) Work Stations (Receiving Area) (Removal Cost: \$20**

Lot #710 (Sale Order 710 of 700)

Lot - Shop Table, and (2) Work Stations (Receiving Area) (Removal Cost: \$20)

**Section of 36 in. x 96 in. x 10 ft. High Pallet Rack (No Dies or Contents)**

Lot #711 (Sale Order 711 of 700)

Section of 36 in. x 96 in. x 10 ft. High Pallet Rack (No Dies or Contents) (Receiving Area) (Removal Cost: \$25)

**Universal Model MICRO-SPRAY Marker System (Vibratory Finishing Room) (Remov**

Lot #712 (Sale Order 712 of 700)

Universal Model MICRO-SPRAY Marker System (Vibratory Finishing Room) (Removal Cost: \$25)

**Avery Weigh-Tronix 48 in. x 48 in. Platform Scale, with Bench Top Scale and**

Lot #713 (Sale Order 713 of 700)

Avery Weigh-Tronix 48 in. x 48 in. Platform Scale, with Bench Top Scale and Cabinet (Vibratory Finishing Room) (Removal Cost: \$50)



**18 in. x 12 ft. Steel Belt Power Conveyor (Vibratory Finishing Room) (Remov**

Lot #714 (Sale Order 714 of 700)

18 in. x 12 ft. Steel Belt Power Conveyor (Vibratory Finishing Room) (Removal Cost: \$50)



**Stretch Wrapper (Vibratory Finishing Room) (Removal Cost: \$50)**

Lot #715 (Sale Order 715 of 700)

Stretch Wrapper (Vibratory Finishing Room) (Removal Cost: \$50)



**24-Bag Dust Collector (Vibratory Finishing Room) (Removal Cost: \$50)**

Lot #716 (Sale Order 716 of 700)

24-Bag Dust Collector (Vibratory Finishing Room) (Removal Cost: \$50)



**Lot - (25) Sections: 36 in. x 96 in. x 18 ft. Pallet Racking (No Contents)**

Lot #717 (Sale Order 717 of 700)

Lot - (25) Sections: 36 in. x 96 in. x 18 ft. Pallet Racking (No Contents) (Vibratory Finishing Room) (Removal Cost: \$750)



**Lot - (15) Sections: 36 in. x 96 in. x 18 ft. Pallet Racking (No Contents)**

Lot #718 (Sale Order 718 of 700)

Lot - (15) Sections: 36 in. x 96 in. x 18 ft. Pallet Racking (No Contents) (Vibratory Finishing Room) (Removal Cost: \$500)



**Lot - (2) Assorted Pallet Racks (No Contents) (Vibratory Finishing Room) (R**

Lot #719 (Sale Order 719 of 700)

Lot - (2) Assorted Pallet Racks (No Contents) (Vibratory Finishing Room) (Removal Cost: \$40)

**Lot - (4) Assorted Pallet Lifts (Need Repair) (Vibratory Finishing Room) (R**

Lot #720 (Sale Order 720 of 700)

Lot - (4) Assorted Pallet Lifts (Need Repair) (Vibratory Finishing Room) (Removal Cost: \$25)

**Part Extractor (Incomplete) (Vibratory Finishing Room) (Removal Cost: \$25)**

Lot #721 (Sale Order 721 of 700)

Part Extractor (Incomplete) (Vibratory Finishing Room) (Removal Cost: \$25)

**Portable Tub, with Contents (Vibratory Finishing Room) (Removal Cost: \$10)**

Lot #722 (Sale Order 722 of 700)

Portable Tub, with Contents (Vibratory Finishing Room) (Removal Cost: \$10)

**Lot - Assorted Motors in Pallet Rack, in (3) Baskets and on (3) Pallets (Vi**

Lot #723 (Sale Order 723 of 700)

Lot - Assorted Motors in Pallet Rack, in (3) Baskets and on (3) Pallets (Vibratory Finishing Room) (Removal Cost: \$50)

**Lot - (2) Assorted Part Slides (Vibratory Finishing Room) (Removal Cost: \$**

Lot #724 (Sale Order 724 of 700)

Lot - (2) Assorted Part Slides (Vibratory Finishing Room) (Removal Cost: \$10)

**Lot - Parts Baskets and Misc. Contents on Pallets (Vibratory Finishing Room**

Lot #725 (Sale Order 725 of 700)

Lot - Parts Baskets and Misc. Contents on Pallets (Vibratory Finishing Room) (Removal Cost: \$25)



**Hydraulic Part Slide (Incomplete) (Vibratory Finishing Room) (Removal Cost**

Lot #726 (Sale Order 726 of 700)

Hydraulic Part Slide (Incomplete) (Vibratory Finishing Room) (Removal Cost: \$25)



**68 in. Machine Table, with Rotary Pallet Atttachment (Vibratory Finishing Roo**

Lot #727 (Sale Order 727 of 700)

68 in. Machine Table, with Rotary Pallet Atttachment (Vibratory Finishing Room) (Removal Cost: \$50)



**LiftRite 5,500 Lb. Cap. Narrow Fork Hydraulic Pallet Jack (2nd Floor) (Remo**

Lot #728 (Sale Order 728 of 700)

LiftRite 5,500 Lb. Cap. Narrow Fork Hydraulic Pallet Jack (2nd Floor) (Removal Cost: N/C)



**Lot - Tool Cabinet and Misc., in Corner (2nd Floor) (Removal Cost: \$50)**

Lot #729 (Sale Order 729 of 700)

Lot - Tool Cabinet and Misc., in Corner (2nd Floor) (Removal Cost: \$50)



**Lot - Pallet Racks Along Wall, Large Qty of Motors, Machinery, Machine Part**

Lot #730 (Sale Order 730 of 700)

Lot - Pallet Racks Along Wall, Large Qty of Motors, Machinery, Machine Parts, Etc., on Pallets in Center of Room (2nd Floor) (Removal Cost: \$750)



**Lot - Bone Yard Machinery and Equipment, Along Wall (2nd Floor) (Removal Co**

Lot #731 (Sale Order 731 of 700)

Lot - Bone Yard Machinery and Equipment, Along Wall (2nd Floor) (Removal Cost: \$300)

**Lot - Carts, Tables and Misc. Contents, Near Elevator (2nd Floor) (Removal**

Lot #732 (Sale Order 732 of 700)

Lot - Carts, Tables and Misc. Contents, Near Elevator (2nd Floor) (Removal Cost: \$150)

**Lot - (8) Stanley Vidmar Tool Cabinets, with Misc. Contents (2nd Floor) (Re**

Lot #733 (Sale Order 733 of 700)

Lot - (8) Stanley Vidmar Tool Cabinets, with Misc. Contents (2nd Floor) (Removal Cost: \$80)

**Lot - Large Qty of Maintenance Parts and Supplies, in (1) Room with Shelvin**

Lot #734 (Sale Order 734 of 700)

Lot - Large Qty of Maintenance Parts and Supplies, in (1) Room with Shelving (2nd Floor) (Removal Cost: \$1000)

**Lot - Large Qty of Maintenance Parts and Supplies, in (1) Room with Shelvin**

Lot #735 (Sale Order 735 of 700)

Lot - Large Qty of Maintenance Parts and Supplies, in (1) Room with Shelving (2nd Floor) (Removal Cost: \$750)

**Lot - Assorted Scrap Thermolators, Machine Parts, Etc., on Balcony Over Rec**

Lot #736 (Sale Order 736 of 700)

Lot - Assorted Scrap Thermolators, Machine Parts, Etc., on Balcony Over Receiving Docks (2nd Floor) (Removal Cost: \$300)

**Lot - Furniture in Training Room and Storage Room (2nd Floor) (Removal Cost**

Lot #737 (Sale Order 737 of 700)

Lot - Furniture in Training Room and Storage Room (2nd Floor) (Removal Cost: \$300)



**Lot - Furniture in Mfg. Manager Office (2nd Floor) (Removal Cost: \$300)**

Lot #738 (Sale Order 738 of 700)

Lot - Furniture in Mfg. Manager Office (2nd Floor) (Removal Cost: \$300)

**Lot - Furniture in Human Resources Office (2nd Floor) (Removal Cost: \$50)**

Lot #739 (Sale Order 739 of 700)

Lot - Furniture in Human Resources Office (2nd Floor) (Removal Cost: \$50)

**Lot - Furniture in Mfg. Manager Office (2nd Floor) (Removal Cost: \$300)**

Lot #740 (Sale Order 740 of 700)

Lot - Furniture in Mfg. Manager Office (2nd Floor) (Removal Cost: \$300)

**Lot - Furniture in Engineering Dept. Office (2nd Floor) (Removal Cost: \$300)**

Lot #741 (Sale Order 741 of 700)

Lot - Furniture in Engineering Dept. Office (2nd Floor) (Removal Cost: \$300)

**Lot - GE Refrigerator/Freezer and Electric Stove with Built-In Microwave Ov**

Lot #742 (Sale Order 742 of 700)

Lot - GE Refrigerator/Freezer and Electric Stove with Built-In Microwave Oven (2nd Floor) (Removal Cost: \$200)

**Lot - Clock and (2) Sconces (2nd Floor) (Removal Cost: \$10)**

Lot #743 (Sale Order 743 of 700)

Lot - Clock and (2) Sconces (2nd Floor) (Removal Cost: \$10)

**Lot- (4) Tables, (2) Chairs, (4) Bench Seats (2nd Floor) (Removal Cost: \$15)**

Lot #744 (Sale Order 744 of 700)

Lot- (4) Tables, (2) Chairs, (4) Bench Seats (2nd Floor) (Removal Cost: \$150)

**Lot - (4) Swivel Bar Stools (2nd Floor Offices) (Removal Cost: \$20)**

Lot #745 (Sale Order 745 of 700)

Lot - (4) Swivel Bar Stools (2nd Floor Offices) (Removal Cost: \$20)

**Lot - (2) Bar Stools (2nd Floor Offices) (Removal Cost: N/C)**

Lot #746 (Sale Order 746 of 700)

Lot - (2) Bar Stools (2nd Floor Offices) (Removal Cost: N/C)

**Lot - (2) Cabinets (2nd Floor Offices) (Removal Cost: \$20)**

Lot #747 (Sale Order 747 of 700)

Lot - (2) Cabinets (2nd Floor Offices) (Removal Cost: \$20)

**Lot - Waiting Room Furniture (1st Floor Offices) (Removal Cost: \$100)**

Lot #748 (Sale Order 748 of 700)

Lot - Waiting Room Furniture (1st Floor Offices) (Removal Cost: \$100)

**Lot - Conference Room Furniture (1st Floor Offices) (Removal Cost: \$100)**

Lot #749 (Sale Order 749 of 700)

Lot - Conference Room Furniture (1st Floor Offices) (Removal Cost: \$100)

**Lot - Desk, Chairs, Credenza, 2-Drawer Lateral File Cabinet, Wall Mount Cab**

Lot #750 (Sale Order 750 of 700)

Lot - Desk, Chairs, Credenza, 2-Drawer Lateral File Cabinet, Wall Mount Cabinet (1st Floor Offices) (Removal Cost: \$200)

**Lot - Office Cubicles and Related Furniture (1st Floor Offices) (Removal Co**

Lot #751 (Sale Order 751 of 700)

Lot - Office Cubicles and Related Furniture (1st Floor Offices) (Removal Cost: \$200)

**Canon Model imageRUNNER 3300 All-in-One Copy Machine (1st Floor Offices) (R**

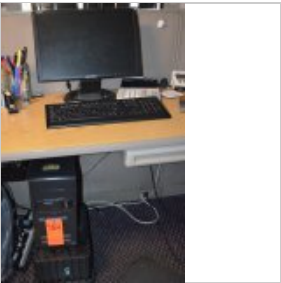
Lot #752 (Sale Order 752 of 700)

Canon Model imageRUNNER 3300 All-in-One Copy Machine (1st Floor Offices) (Removal Cost: \$50)

**Hewlett Packard Model LaserJet P4014n Printer (1st Floor Offices) (Removal**

Lot #753 (Sale Order 753 of 700)

Hewlett Packard Model LaserJet P4014n Printer (1st Floor Offices) (Removal Cost: \$20)

**PC with Monitor and Keyboard (1st Floor Offices) (Removal Cost: \$20)**

Lot #754 (Sale Order 754 of 700)

PC with Monitor and Keyboard (1st Floor Offices) (Removal Cost: \$20)

**Reception Furniture (1st Floor Offices) (Removal Cost: \$100)**

Lot #755 (Sale Order 755 of 700)

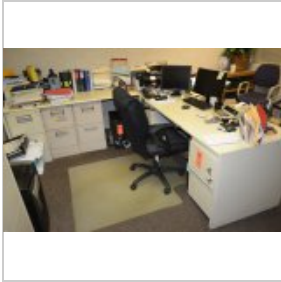
Reception Furniture (1st Floor Offices) (Removal Cost: \$100)



**PC with Dell Monitor (1st Floor Offices) (Removal Cost: \$20)**

Lot #756 (Sale Order 756 of 700)

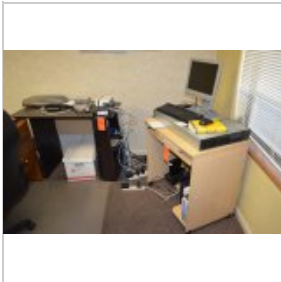
PC with Dell Monitor (1st Floor Offices) (Removal Cost: \$20)



**Lot - Desk with Return, Chair, Assorted File Cabinets, Arm Chairs Etc. (1st**

Lot #757 (Sale Order 757 of 700)

Lot - Desk with Return, Chair, Assorted File Cabinets, Arm Chairs Etc. (1st Floor Offices) (Removal Cost: \$100)



**Lot - Computer Server System, with Related Equipment and Stands (1st Floor**

Lot #758 (Sale Order 758 of 700)

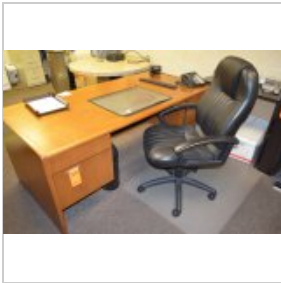
Lot - Computer Server System, with Related Equipment and Stands (1st Floor Offices) (Removal Cost: \$50)



**GE Top Load Chest Freezer (1st Floor Offices) (Removal Cost: \$25)**

Lot #759 (Sale Order 759 of 700)

GE Top Load Chest Freezer (1st Floor Offices) (Removal Cost: \$25)



**Lot - Assorted Furniture (1st Floor Offices) (Removal Cost: \$100)**

Lot #760 (Sale Order 760 of 700)

Lot - Assorted Furniture (1st Floor Offices) (Removal Cost: \$100)



**Lot - Furniture in Executive Office (1st Floor Offices) (Removal Cost: \$150)**

Lot #761 (Sale Order 761 of 700)

Lot - Furniture in Executive Office (1st Floor Offices) (Removal Cost: \$150)



**Lot - Lunch Room Appliances (Lunch Room) (Removal Cost: \$100)**

Lot #762 (Sale Order 762 of 700)

Lot - Lunch Room Appliances (Lunch Room) (Removal Cost: \$100)



**Lot - (8) Bench Style Booths (Lunch Room) (Removal Cost: \$100)**

Lot #763 (Sale Order 763 of 700)

Lot - (8) Bench Style Booths (Lunch Room) (Removal Cost: \$100)



**Lot - (7) Round Tables, with Built-In Seating (Lunch Room) (Removal Cost: \$100)**

Lot #764 (Sale Order 764 of 700)

Lot - (7) Round Tables, with Built-In Seating (Lunch Room) (Removal Cost: \$100)



**Lot - Folding Tables and Stack Chairs (Lunch Room) (Removal Cost: \$25)**

Lot #765 (Sale Order 765 of 700)

Lot - Folding Tables and Stack Chairs (Lunch Room) (Removal Cost: \$25)



**Deerfield 2-Door Stainless Steel Refrigerator (Lunch Room) (Removal Cost: \$50)**

Lot #766 (Sale Order 766 of 700)

Deerfield 2-Door Stainless Steel Refrigerator (Lunch Room) (Removal Cost: \$50)



**Lot - Assorted Lockers in Mens and Womens Locker Rooms (No Aramark Uniform Lockers)**

Lot #767 (Sale Order 767 of 700)

Lot - Assorted Lockers in Mens and Womens Locker Rooms (No Aramark Uniform Lockers) (Locker Rooms) (Removal Cost: \$100)