



# oil circulating temperature control systems



## features

- Extended seal life achieved by using high temperature pumps that have a water-jacketed seal area that is continually flushed with cold water.
- Shell and tube heat exchanger cools the oil.
- Immersion heaters are electronically interlocked to prevent operation if the pump is not running.
- Bypass circuit insures heater flooding reducing heater burnout.

## specifications

Heater kW	6	9	12	18	24	30	36
FLA @230/460	18.3/9.1	25.8/12.9	33.3/16.7	48.4/24.2	64.3/31.7	78.5/39.3	NA/46.8
Process Lines	Water Supply	Drain	LxWxH	Approx. Weight	Pump		
1 inch	1/2 inch	1/2 inch	24"x24"x53"	480 lbs.	1 HP = 30 GPM @ 30 PSI		

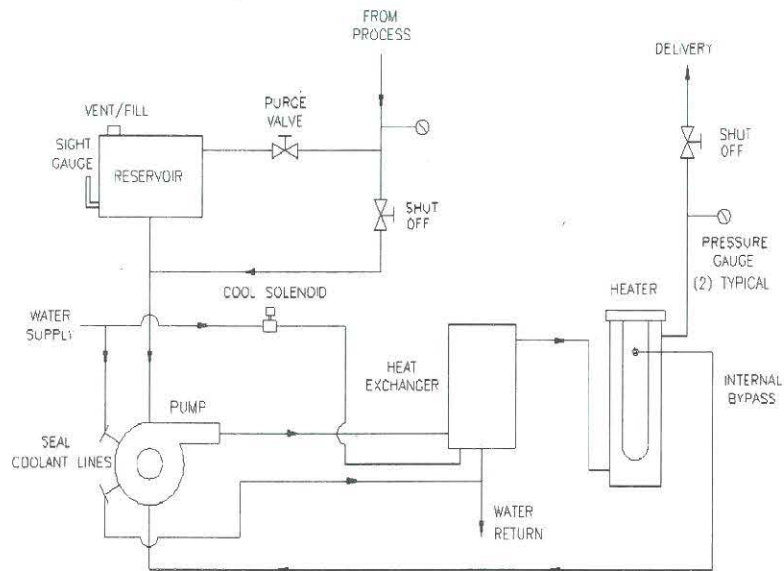
## standard

- Rated to 450°F
- Stainless steel cabinetry
- NEMA 12 electrical enclosure
- Microprocessor-based controller with Autotuning and PID control
- Digital display
- Low pressure alarm/shut-down
- 6-36 kW heaters
- Safety thermostat for automatic shut-down on over-temperature condition
- 9 gallon reservoir
- Centrifugal pump
- Process and return line shut-off valves
- Process pressure gauge
- Oil level sight gauge
- Oil tight pilot lights
- Oil tight push buttons
- 230 or 460 volt/3 phase/60 hertz

## options

- Multi-zone systems
- Positive displacement pump
- Forward/reverse feature (requires positive displacement pump)
- 2 HP - 50 GPM @28 PSI Centrifugal pump
- Flow switch - oil line
- Flow switch - water line
- Low-level control on reservoir tank
- Hour meter
- 30, 60 or 100 AMP disconnect
- 575 volt/3 phase/60 hertz
- Automatic cool down circuit
- Extended temperature range to 550°F
- PARATHERM Heat Transfer Fluid
- CE Compliance

two year warranty



QPC Systems Inc.  
670 Windcrest Drive  
Holland, MI 49423  
USA  
Tel. (616) 394-6963  
Fax (616) 394-6986  
Email: [info@qpcsystems.com](mailto:info@qpcsystems.com)

[www.qpcsystems.com](http://www.qpcsystems.com)

**QPC**  
An IdraPrince Company