

- XZ36013-001
- GM20010-674
6-M5x10
- XZ36013-002
- GM20010-674
4-M5x10

- GE10402-513
1-M5.8x-028
 - GK03020-024
2-M6: 10
 - GM24000-113
7-A-1178-13
 - GK03041-023
2-M6
- SECT. C-C
S = 1 : 2

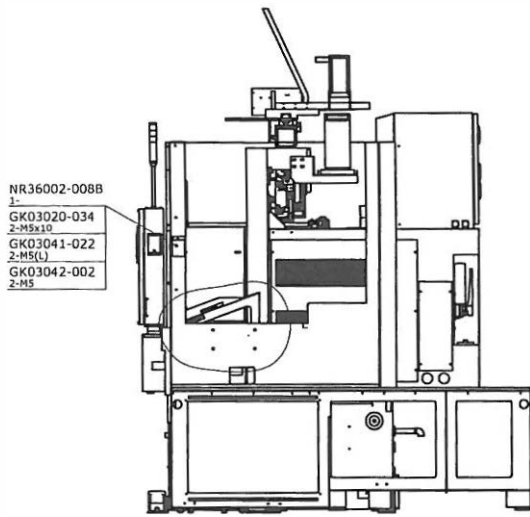
VIEW A

- GK03020-134
2-M5x12
 - GK03041-022
2-M5(L)
 - GK03042-002
2-M5
 - XZ36002-004
1-
 - BF36022-004
1-
 - GM20003-674
2-M5x10
 - GM20003-674
2-M5x10
 - XZ36002-005
1-
 - GE10402-571
1-M5.8x-AS1A
 - GK03042-001
2-M6
 - GK03020-118
2-M4x12
- SECT. B-B
S = 1 : 2

- NC10030-427
- SAFETY GUARD INTERLOCK
- ON OFF
- XD36011-001
- GM24100-101
1-PL-15(S9)
- XZ36001-001
- GM20010-674
6-M5x10
- GM20010-224
8-M5x10
- XD36002-003
- XZ36011-001
- GK03071-017
2-B-202-5
- GK03092-000
12-M3x6
- XZ36011-004
- GK03047-203
10-M6
- GK03041-003
10-M6
- GK03042-003
10-M6
- XZ36011-002
- GM20010-239
8-M6x12
- XZ36011-003
- GK03020034
5-M5x10
- GK03041-002
5-M5
- GK03042-002
5-M5
- GM20010-239
6-M6x12

[8 inch Type A]

TAKISAWA		TT-2600	
SAFETY COVER		XZ36011-000	
1/2			



SECT. D-D

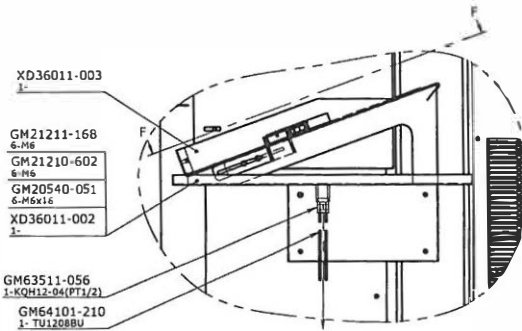
- NR36002-008B
1-
- GK03020-034
2-M5x10
- GK03041-022
2-M5(L)
- GK03042-002
2-M5

- GK03042-000
2-M3
- GK03020-006
2-M3x20
- GF15600-911
1-FE-28114
- XD36004-006A
1-
- XD36004-004
1-

- BF36005-004A
1-
- GM20540-034
2-M5x10

- GK03018-001
2-M3x8
- GK03041-000
2-M3
- XD36004-005
1-
- GE15600-051
2-HP100-P2-103
- GM20540-034
2x2-M5x10
- GM21210-601
2x2-M5
- GM21211-167
2x2-M5

SECT. F-F
S = 1 : 5



DETAIL E
S=1:5

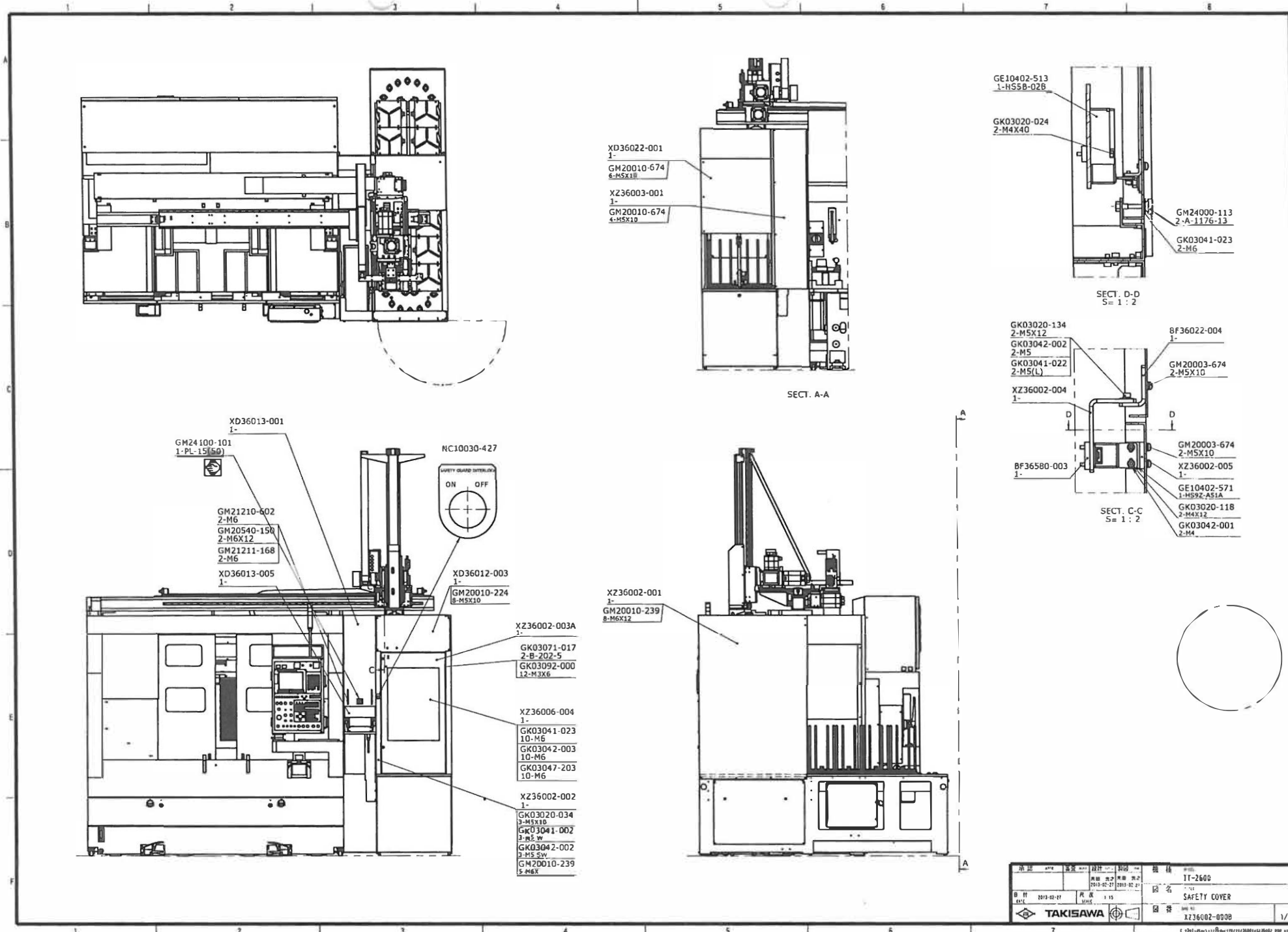
- XD36011-003
1-
- GM21211-168
6-M6
- GM21210-602
6-M6
- GM20540-051
6-M6x16
- XD36011-002
1-
- GM63511-056
1-KQH12-04(PT1/2)
- GM64101-210
1-TU1208BU

品名	安全カバー	設計	2012-08-12	図番	TT-2600
図番	TT-2600	設計	2012-08-12	図名	安全カバー
図名	安全カバー	設計	2012-08-12	図番	XZ36011-000
図番	XZ36011-000	設計	2012-08-12	図名	安全カバー
図名	安全カバー	設計	2012-08-12	図番	XZ36011-000
図番	XZ36011-000	設計	2012-08-12	図名	安全カバー

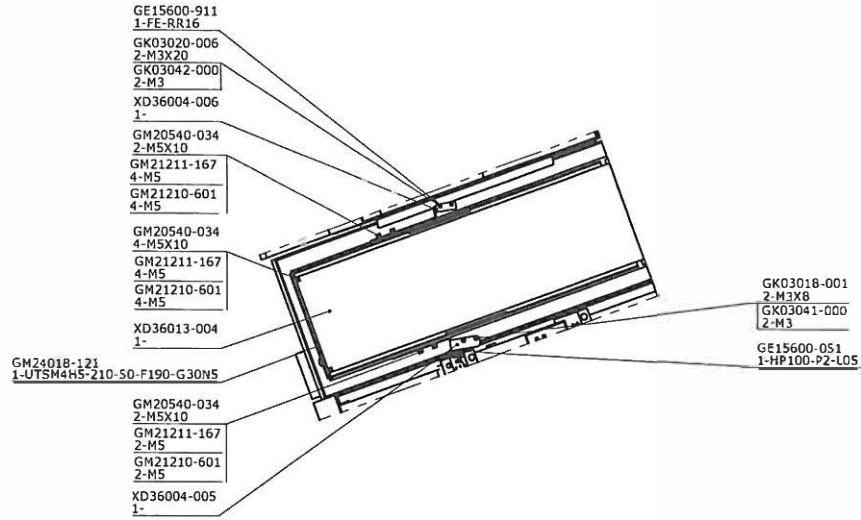
SAFETY COVER (8")

XZ36011-000

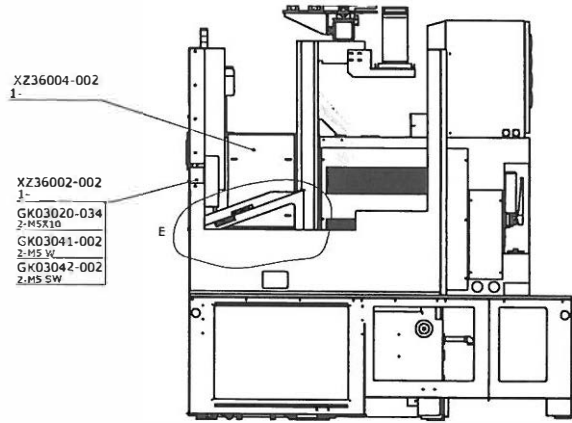
PART No.	PART NAME	(MAKER) MATERIAL	DIMENSION
BF36005-004A	PLATE	UR. RUBBER	
BF36022-004	BRACKET	SPHC	WF
BF36580-003	PLATE	SS400	
GE10402-513	LIMIT SWITCH	(IDEC)	HS5B-02B
GE10402-571	LIMIT SWITCH	(IDEC)	HS9Z-A51A
GE15600-051	PHOTO SWITCH (YAMATAKE)	(YAMATAKE)	HP100-P2-L05
GE15600-911	REFLECTOR	(YAMATAKE)	FE-RR16
GK03018-001	ROUND HEAD MACHINE SCREW (+)	(JIS STD)	M3X8
GK03020-006	HEX. SOCKET HEAD CAP SCREW	(KKT)	M3X20
GK03020-024	HEX. SOCKET HEAD CAP SCREW	(KKT)	M4X40
GK03020-034	HEX. SOCKET HEAD CAP SCREW	(KKT)	M5X10
GK03020-118	HEX. SOCKET HEAD CAP SCREW	(KKT)	M4X12
GK03020-134	HEX. SOCKET HEAD CAP SCREW	(KKT)	M5X12
GK03041-000	PLAIN WASHER	(JIS STD)	M3
GK03041-002	PLAIN WASHER	(JIS STD)	M5
GK03041-003	PLAIN WASHER	(JIS STD)	M6
GK03041-022	PLAIN WASHER	(SANKO)	M5
GK03041-023	PLAIN WASHER	(SANKO)	M6
GK03042-000	SPRING WASHER	(JIS STD)	M3
GK03042-001	SPRING WASHER	(JIS STD)	M4
GK03042-002	SPRING WASHER	(JIS STD)	M5
GK03042-003	SPRING WASHER	(JIS STD)	M6
GK03047-203	HEX. NUT	(JIS STD)	M6X1 (1)
GK03071-017	HINGE	(TAKIGEN)	B-202-5
GK03092-000	F. C. HEAD MACHINE SCREW	(JIS STD)	M3X6
GM20003-674	ROUND HEAD MACHINE SCREW	(SANKO)	M5X10
GM20010-224	ROUND HEAD MACHINE SCREW	(SANKO)	M5X0. 8X10
GM20010-239	ROUND HEAD MACHINE SCREW	(SANKO)	M6X12
GM20010-674	ROUND HEAD MACHINE SCREW	(JIS STD)	M5X0. 8X10
GM20540-034	HEX. SOCKET HEAD CAP SCREW	(JIS STD)	M5X10
GM20540-051	HEX. SOCKET HEAD CAP SCREW	(JIS STD)	M6X16
GM21210-601	PLAIN WASHER	(SANKO)	M5
GM21210-602	PLAIN WASHER	(SANKO)	M6
GM21211-167	SPRING WASHER	(JIS STD)	M5
GM21211-168	SPRING WASHER	(JIS STD)	M6
GM24000-113	KNOB FASTENER	(TAKIGEN)	A-1176-13
GM24100-101	NAME PLATE	(JGC)	PL-15 (50X50)
GM63511-056	HALF UNION	(SMC)	KQH12-04 (PT1/2)
GM64101-210	TUBE (POLYURETHANE)	(SMC)	TU1208BU
NC10030-031	NAME PLATE	ACRYLIC	
NC10030-427	NAME PLATE (22. 5)	ACRYLIC	" SAFETY GUARD INTER. . . "
NR36002-008B	COVER	SPCC	
XD36002-003	COVER	SPCC	
XD36004-004	PLATE	SUS304	
XD36004-005	BRACKET	SPCC	
XD36004-006A	BRACKET	SPCC	
XD36011-001	COVER	SPCC	
XD36011-002	OILPAN	SPCC	
XD36011-003	SHUTE	SPCC	
XZ36001-001	COVER	SPCC	
XZ36002-004	BRACKET	SPHC	WF
XZ36002-005	BRACKET	SPCC	WF
XZ36011-001	COVER	SPCC	
XZ36011-002	COVER	SPCC	
XZ36011-003	COVER	SPCC	
XZ36011-004	PLATE	PVC	
XZ36013-001	COVER	SPCC	
XZ36013-002	COVER	SPCC	



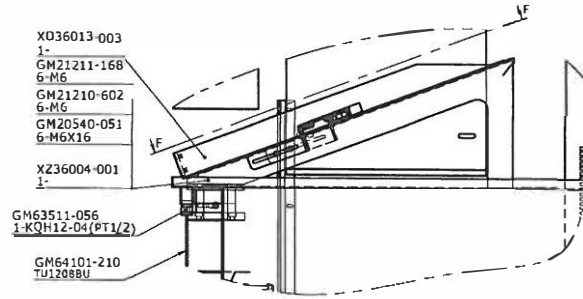
品名	TT-2600
品番	SAFETY COVER
品番	XZ36002-000B
1/2	



SECT. F-F
S = 1 : 5



SECT. B-B

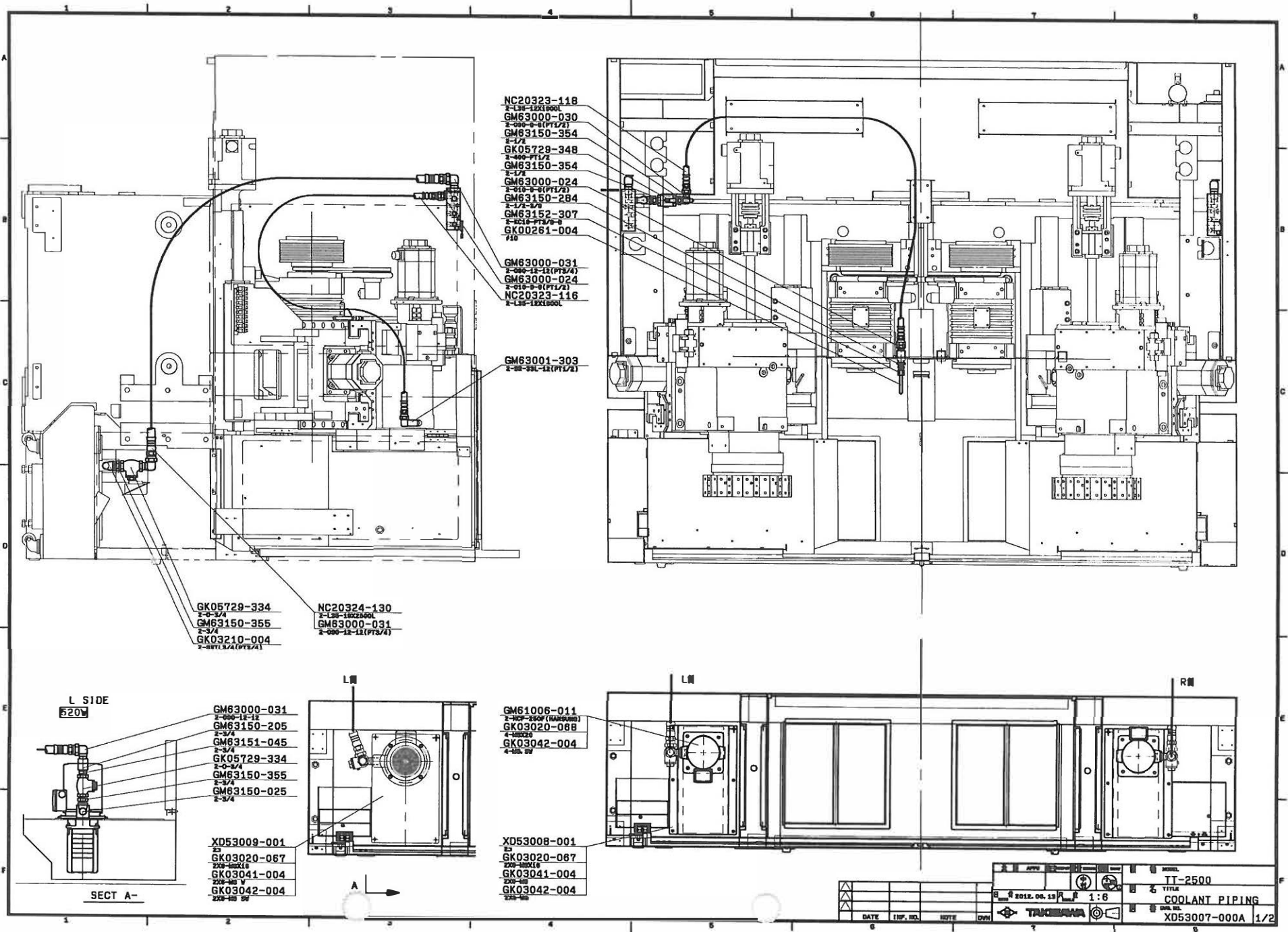


DETAIL E
S = 1:5

品名	安全カバー	数量	1	単位	個
図番	XZ36002-000B	材料	鋼板	仕上	黒色
製図	2013-02-27	検査	2013-02-27	承認	2013-02-27
設計	1003-00-27	尺取	1:15	図名	TT-2600
製図	TAKISAWA	図名	安全カバー	図番	XZ36002-000B
					2/2

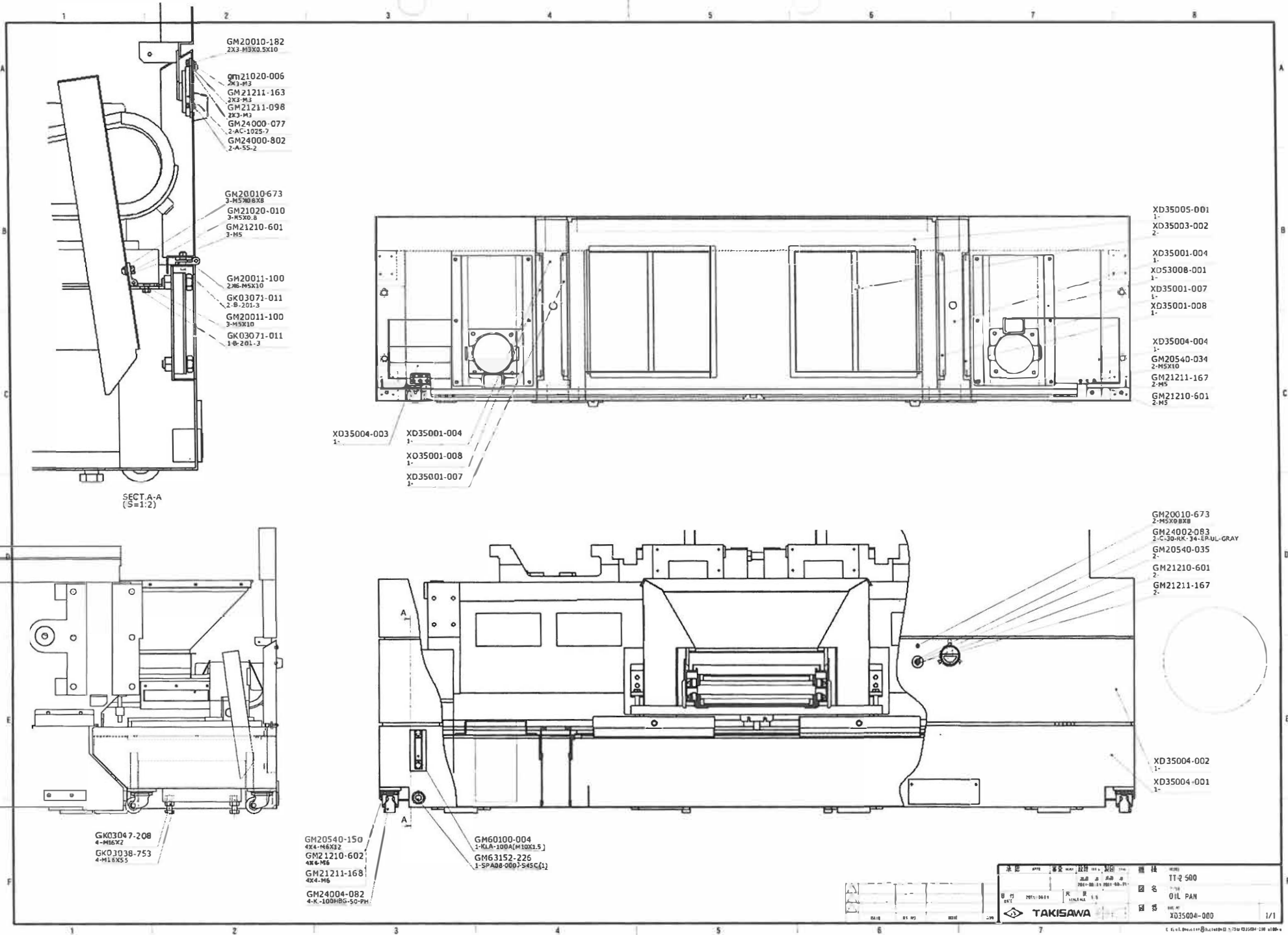
SAFETY COVER (10')
XZ36002-000B

PART No.	PART NAME	(MAKER) MATERIAL	DIMENSION
BF36022-004	BRACKET	SPHC	WF
BF36580-003	PLATE	SS400	
GE10402-571	LIMIT SWITCH	(IDEC)	HS9Z-A51A
GE15600-051	PHOTO SWITCH (YAMATAKE)	(YAMATAKE)	HP100-P2-L05
GE15600-911	REFLECTOR	(YAMATAKE)	FE-RR16
GK03018-001	ROUND HEAD MACHINE SCREW (+)	(JIS STD)	M3X8
GK03020-006	HEX. SOCKET HEAD CAP SCREW	(KKT)	M3X20
GK03020-024	HEX. SOCKET HEAD CAP SCREW	(KKT)	M4X40
GK03020-034	HEX. SOCKET HEAD CAP SCREW	(KKT)	M5X10
GK03020-118	HEX. SOCKET HEAD CAP SCREW	(KKT)	M4X12
GK03020-134	HEX. SOCKET HEAD CAP SCREW	(KKT)	M5X12
GK03041-000	PLAIN WASHER	(JIS STD)	M3
GK03041-002	PLAIN WASHER	(JIS STD)	M5
GK03041-022	PLAIN WASHER	(SANKO)	M5
GK03041-023	PLAIN WASHER	(SANKO)	M6
GK03042-000	SPRING WASHER	(JIS STD)	M3
GK03042-001	SPRING WASHER	(JIS STD)	M4
GK03042-002	SPRING WASHER	(JIS STD)	M5
GK03042-003	SPRING WASHER	(JIS STD)	M6
GK03047-203	HEX. NUT	(JIS STD)	M6X1 (1)
GK03071-017	HINGE	(TAKIGEN)	B-202-5
GK03092-000	F. C. HEAD MACHINE SCREW	(JIS STD)	M3X6
GM20003-674	ROUND HEAD MACHINE SCREW	(SANKO)	M5X10
GM20010-224	ROUND HEAD MACHINE SCREW	(SANKO)	M5X0. 8X10
GM20010-239	ROUND HEAD MACHINE SCREW	(SANKO)	M6X12
GM20010-674	ROUND HEAD MACHINE SCREW	(JIS STD)	M5X0. 8X10
GM20540-034	HEX. SOCKET HEAD CAP SCREW	(JIS STD)	M5X10
GM20540-051	HEX. SOCKET HEAD CAP SCREW	(JIS STD)	M6 X16
GM20540-150	HEX. SOCKET HEAD CAP SCREW	(JIS STD)	M6X12
GM21210-601	PLAIN WASHER	(SANKO)	M5
GM21210-602	PLAIN WASHER	(SANKO)	M6
GM21211-167	SPRING WASHER	(JIS STD)	M5
GM21211-168	SPRING WASHER	(JIS STD)	M6
GM24000-113	KNOB FASTENER	(TAKIGEN)	A-1176-13
GM24018-121	URETHANE	(MISUMI)	UTSM4H5-210-50-F190-G30N5
GM24100-101	NAME PLATE	(JGC)	PL-15 (50X50)
GM63511-056	HALF UNION	(SMC)	KQH12-04 (PT1/2)
GM64101-210	TUBE (POLYURETHANE)	(SMC)	TU1208BU
NC10030-427	NAME PLATE (22. 5)	ACRYLIC	" SAFETY GUARD INTER. ... "
XD36004-005	BRACKET	SPCC	
XD36004-006	BRACKET	SPCC	
XD36012-003	COVER	SPCC	
XD36013-001	COVER	SPCC	
XD36013-003	CHUTE	SPCC	
XD36013-004	PLATE	SUS304	
XD36013-005	COVER	SPCC	
XD36022-001	COVER	SPCC	
XZ36002-001	COVER	SPCC	
XZ36002-002	COVER	SPCC	
XZ36002-003A	COVER	SPCC	
XZ36002-004	BRACKET	SPHC	WF
XZ36002-005	BRACKET	SPCC	WF
XZ36003-001	COVER	SPCC	
XZ36004-001	OIL PAN	SPCC	
XZ36004-002	COVER	SPCC	
XZ36006-004	PLATE	PVC	



COOLANT PIPING
XD53007-000A

PART No.	PART NAME	(MAKER) MATERIAL	DIMENSION
GK00261-004	TUBE (BANDY)	(LUBCON)	φ 10
GK03020-067	HEX. SOCKET HEAD CAP SCREW	(KKT)	M8X16
GK03020-068	HEX. SOCKET HEAD CAP SCREW	(KKT)	M8X20
GK03041-004	PLAIN WASHER	(JIS STD)	M8
GK03042-004	SPRING WASHER	(JIS STD)	M8
GK03210-004	ELBOW JOINT	(IHARA)	SSTL3/4 (PT3/4, 90°)
GK05729-334	SWING VALVE	(KITZ)	0-3/4
GK05729-348	BALL VALVE	(KITZ)	400, PT1/2
GM61001-501	COOLANT PUMP	(GRUNDFOS)	MTH2-60/5A-W-A
GM61001-502	COOLANT PUMP	(GRUNDFOS)	MTH2-60/3A-W-A
GM61006-011	COOLANT PUMP	(HANSUNG)	HCP-250F
GM63000-024	PIPE FITTING	(NITTA)	010-8-8
GM63000-030	PTPE FITTING	(NITTA)	090-8-8
GM63000-031	PIPE FITTING	(NITTA)	090-12-12
GM63001-303	PIPE FITTING	(SHIMIZU S)	SR-33L-12 (PF1/2XPT1/2)
GM63150-024	ELBOW	(JIS STD)	1/2 (25KG)
GM63150-025	ELBOW	(JIS STD)	3/4 (25KG)
GM63150-205	SOCKET	(JIS STD)	3/4 (25KG)
GM63150-284	BUSHING	(JIS STD)	1/2X3/8 (25KG)
GM63150-334	T-JOINT	(JIS STD)	1/2 (25KG)
GM63150-354	NIPPLE	(JIS STD)	1/2 (25KG)
GM63150-355	NIPPLE	(JIS STD)	3/4 (25KG)
GM63151-045	BARREL NIPPLE	(JIS STD)	3/4 (25KG)
GM63152-307	PIPE FITTING	(IHARA)	KC10-PT3/8-B
NC20323-116	HOSE	(YOKOHAMA)	L35-12 (1800L)
NC20323-118	HOSE	(YOKOHAMA)	L35-12 (1900L)
NC20323-130	HOSE	(YOKOHAMA)	L35-12 (2500L)
NC20324-130	HOSE	(YOKOHAMA)	L35-19 (2500L)
XD53008-001	BRACKET	SPCC	
XD53009-001	PLATE	SPCC	



GM20010-182
2X3-M5X0.5X10
gm21020-006
2X3-M3
GM21211-163
2X3-M3
GM21211-098
2X3-M3
GM24000-077
2-A-C-1025-7
GM24000-802
2-A-55-2

GM20010-673
3-M5X0.8X8
GM21020-010
3-M5X0.8
GM21210-601
3-M5

GM20011-100
2-M5-M5X10
GK03071-011
2-B-201-3
GM20011-100
3-M5X10
GK03071-011
1-B-201-3

SECT.A-A
(S=1:2)

GK03047-208
4-M5X2
GK03038-753
4-M1.6X5.5

GM20540-150
4X4-M6X12
GM21210-602
4X4-M6
GM21211-168
4X4-M6
GM24004-082
4-K-100H8G-50-PH

GM60100-004
1-KLA-100A(M10X1.5)
GM63152-226
1-SPAD8-0007-545C(1)

XD35005-001
1-
XD35003-002
2-

XD35001-004
1-
XD53008-001
1-
XD35001-007
1-
XD35001-008
1-

XD35004-004
1-
GM20540-034
2-M5X10
GM21211-167
2-M5
GM21210-601
2-M5

XD35004-003
1-
XD35001-004
3-
XD35001-008
1-
XD35001-007
3-

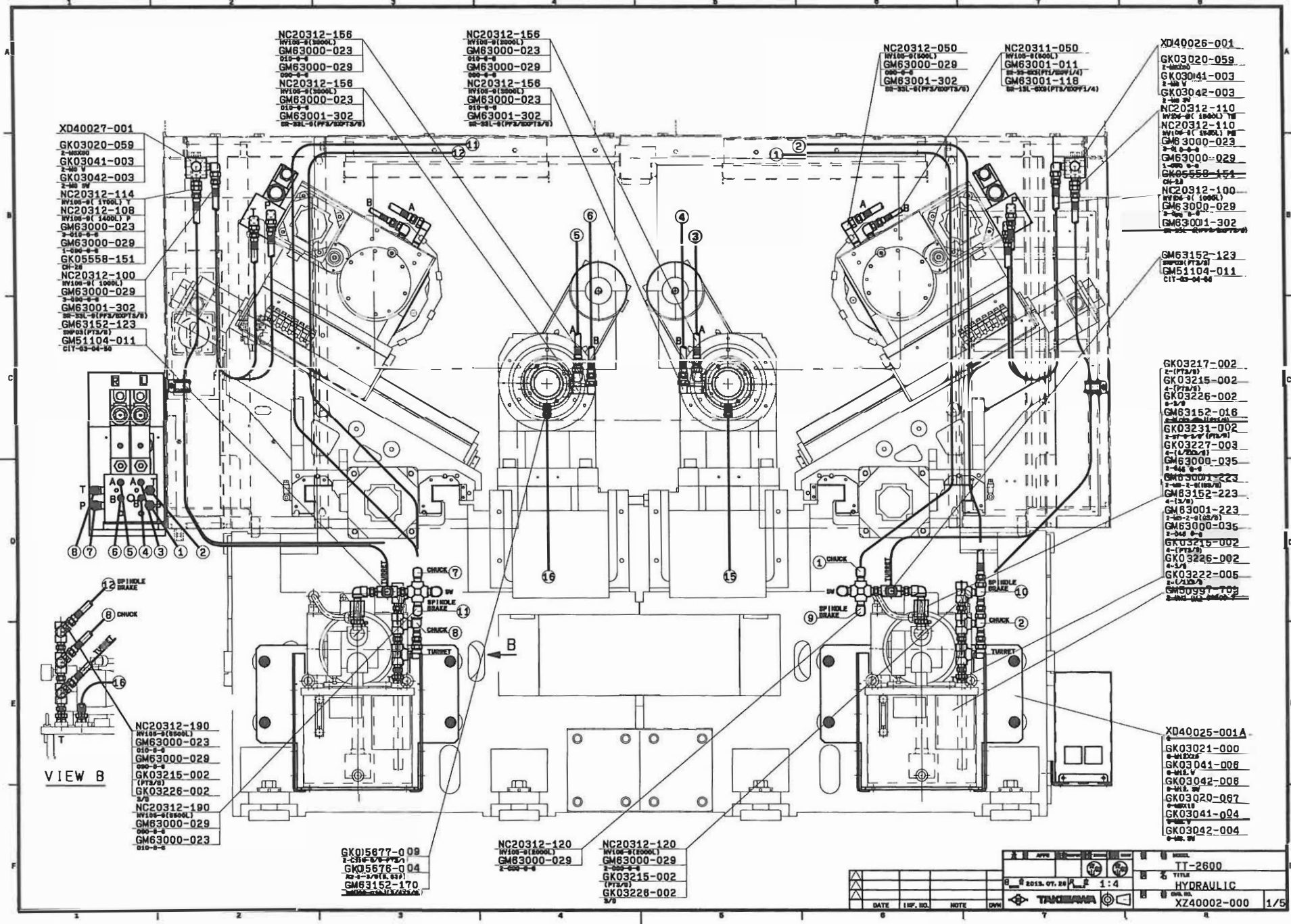
GM20010-673
2-M5X0.8X8
GM24002-083
2-C-30-RK-34-EPUL-GRAY
GM20540-035
2-
GM21210-601
2-
GM21211-167
2-

XD35004-002
1-
XD35004-001
1-

TAKISAWA		TT-2 500
OIL PAN		
XD35004-000		1/1

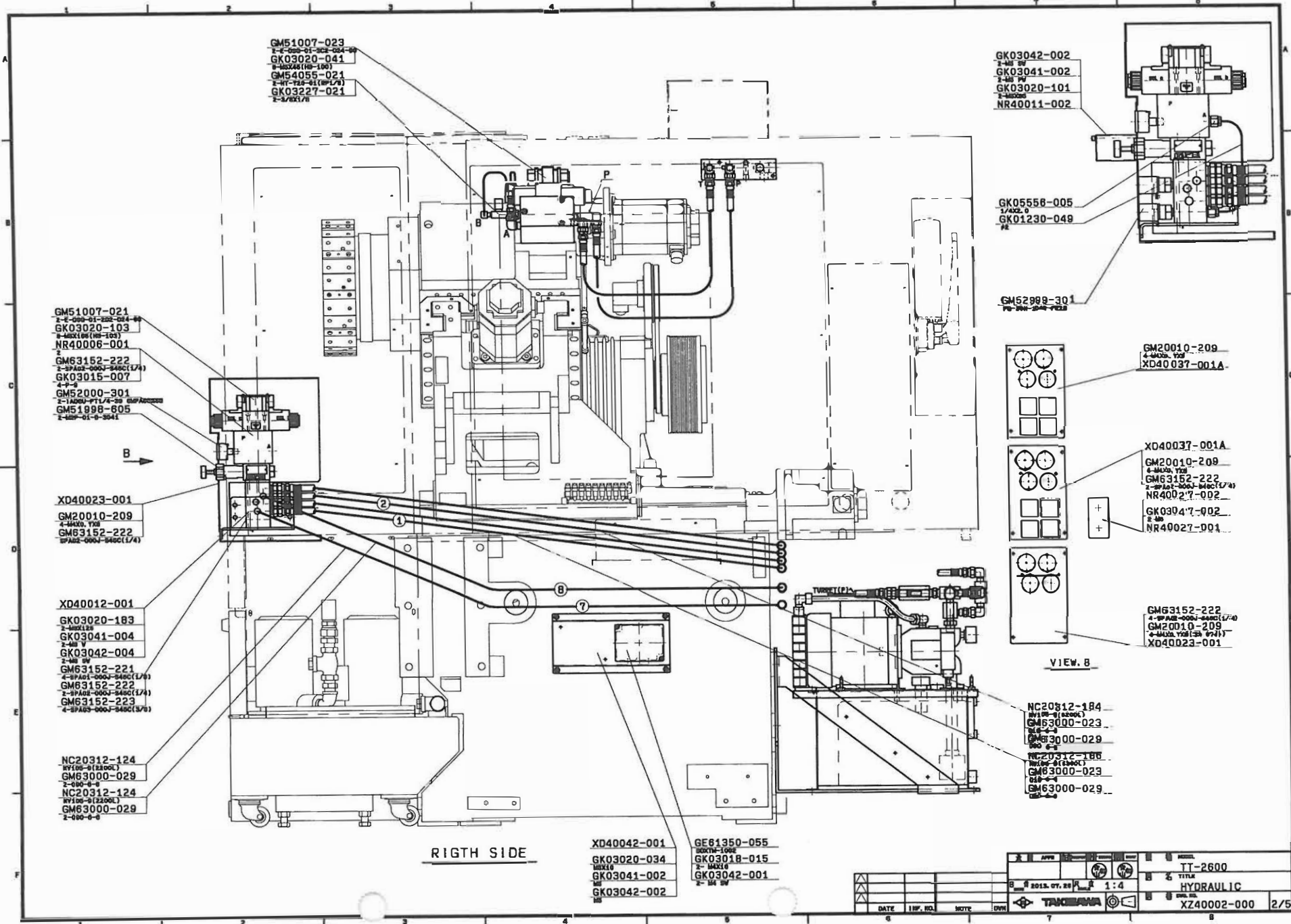
OIL PAN
XD35004-000

PART No.	PART NAME	(MAKER) MATERIAL	DIMENSION
GK03038-753	HEX. HEAD BOLT	(KKT)	M16X55
GK03047-208	HEX. NUT	(JIS STD)	M16X2 (1)
GK03071-011	HINGE	(TAKIGEN)	B-201-3
GM20010-182	ROUND HEAD MACHINE SCREW	(SANKO)	M3X0.5X10
GM20010-673	ROUND HEAD MACHINE SCREW	(JIS STD)	M5X0.8X8
GM20011-100	F. C. HEAD MACHINE SCREW	(JIS STD)	M5X10
GM20540-034	HEX. SOCKET HEAD CAP SCREW	(JIS STD)	M5X10
GM20540-035	HEX. SOCKET HEAD CAP SCREW	(JIS STD)	M5X16
GM20540-150	HEX. SOCKET HEAD CAP SCREW	(JIS STD)	M6X12
GM21020-006	HEX. NUT	(JIS STD)	M3 (1)
GM21020-010	HEX. NUT	(JIS STD)	M5X0.8 (1)
GM21210-601	PLAIN WASHER	(SANKO)	M5
GM21210-602	PLAIN WASHER	(SANKO)	M6
GM21211-098	WASHER	(JIS STD)	M3
GM21211-163	SPLING WASHER	(JIS STD)	M3
GM21211-167	SPRING WASHER	(JIS STD)	M5
GM21211-168	SPRING WASHER	(JIS STD)	M6
GM24000-077	STOPPER PLATE	(TAKIGEN)	AC-1025-7
GM24000-802	LIFT HANDLE	(TAKIGEN)	A-55-2
GM24002-083	RUBBER LEG	(TAKIGEN)	C-30-RK-34-EP-UL-GRAY
GM24004-082	CASTER	(TAKIGEN)	K-100HBG-50-PH
GM60100-004	OIL GAUGE	(KYOWA)	KLA-100A (M10X1.5)
GM63152-226	TAPER PLUG	(IHARA)	SPA08-000J-S45C (1)
XD35001-004	PLATE	SPCC	
XD35001-007	FILTER	SPCC	
XD35001-008	FILTER	SPCC	
XD35003-002	CHIP PAN	SPCC	
XD35004-001	OIL PAN	SPCC	
XD35004-002	COVER	SPCC	
XD35004-003	COVER	SPCC	
XD35004-004	COVER	SPCC	
XD35005-001	PLATE	SPCC	
XD53008-001	BRACKET	SPCC	



VIEW B

DATE	REV.	BY	CHKD.	DATE	REV.	BY	CHKD.	DATE	REV.	BY	CHKD.
TT-2600 HYDRAULIC XZ04002-000 1/5								1:4 TITAN			



- GM51007-021
2-E-000-01-202-024-00
- GK03020-103
8-40X1.75 (100)
- NR40006-001
- GM63152-222
2-3PA02-000J-840C(1/4)
- GK03015-007
4-1/2
- GM52000-301
2-1AD00-PT1/4-20 (6P/Access)
- GM51998-605
2-1/2-01-9-3041

- XD40023-001
- GM20010-209
4-40X3.75
- GM63152-222
2-3PA02-000J-840C(1/4)

- XD40012-001
- GK03020-183
2-40X1.25
- GK03041-004
- GK03042-004
2-40 SW
- GM63152-221
2-3PA02-000J-840C(1/4)
- GM63152-222
2-3PA02-000J-840C(1/4)
- GM63152-223
2-3PA02-000J-840C(3/8)

- NC20312-124
REV 06-0 (2200L)
- GM63000-029
2-100-0-0
- NC20312-124
REV 06-0 (2200L)
- GM63000-029
2-100-0-0

- GM51007-023
2-E-000-01-202-024-00
- GK03020-041
8-40X1.75 (100)
- GM54055-021
2-1/2-01-9-3041
- GK03227-021
2-3/4X1/2

- GK03042-002
2-40 SW
- GK03041-002
2-40 SW
- GK03020-101
2-40 SW
- NR40011-002

- GK05558-005
1/4X2.0
- GK01230-049
1/2

- GM52988-301
PW-300-200-7022

- GM20010-209
4-40X3.75
- XD40037-001A

- XD40037-001A
- GM20010-209
4-40X3.75
- GM63152-222
2-3PA02-000J-840C(1/4)
- NR40027-002
- GK03047-002
2-40
- NR40027-001

- GM63152-222
4-3PA02-000J-840C(1/4)
- GM20010-209
4-40X3.75 (5741)
- XD40023-001

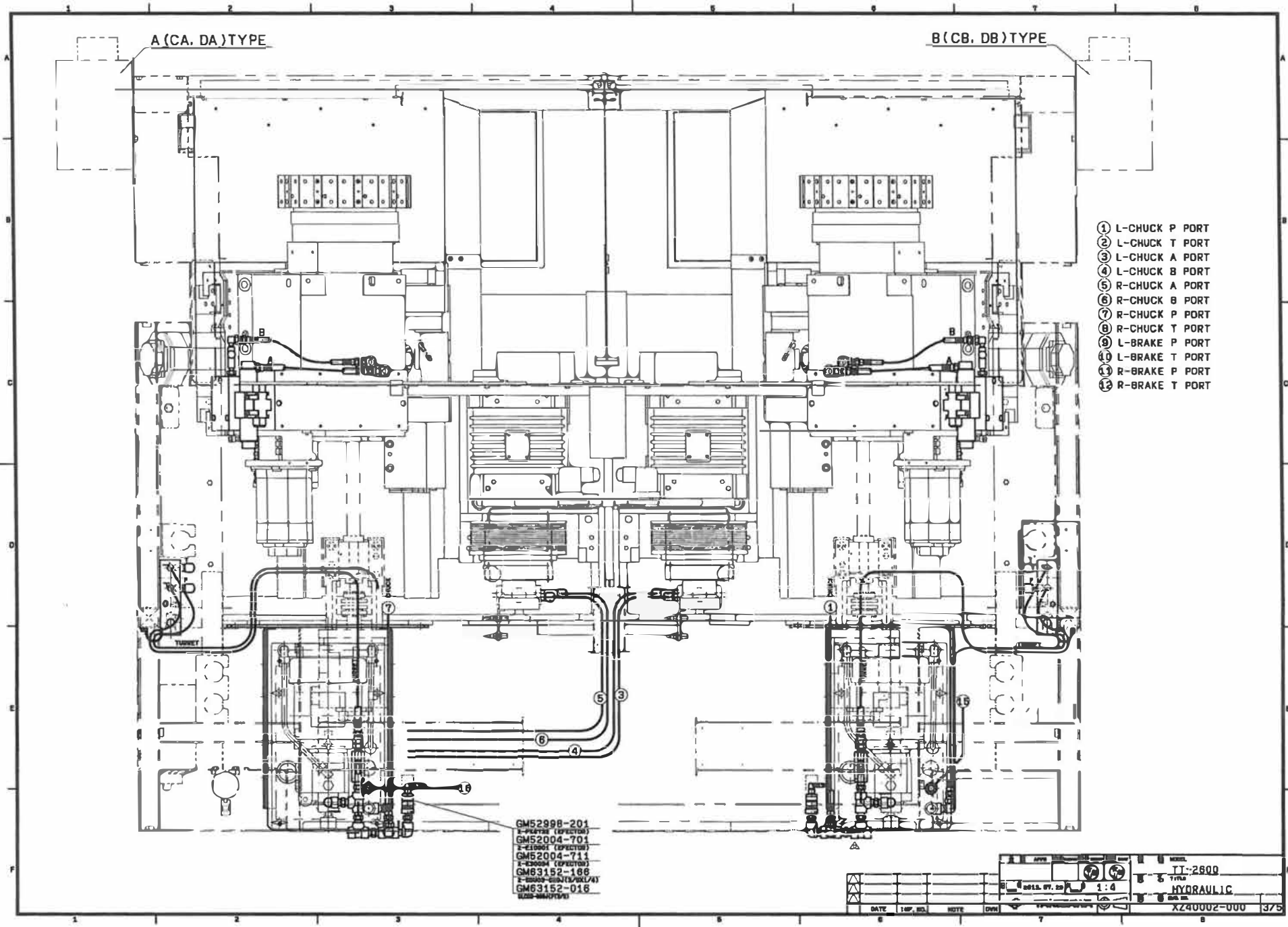
VIEW 8

- NC20312-184
REV 06-0 (2000L)
- GM63000-023
REV 06-0
- GM63000-029
REV 06-0
- NC20312-186
REV 06-0 (2000L)
- GM63000-023
REV 06-0
- GM63000-029
REV 06-0

- XD40042-001
- GK03020-034
MAX10
- GK03041-002
REV
- GK03042-002
REV
- GE81350-055
REV 06-0 (2000L)
- GK03018-015
2-MAX10
- GK03042-001
2-40 SW

RIGTH SIDE

DATE	REV. NO.	NOTE	APP. NO.	REV.	DATE	REV.	DATE	REV.	DATE	REV.
<p>TT-2600 HYDRAULIC XZ40002-000 2/5</p>										

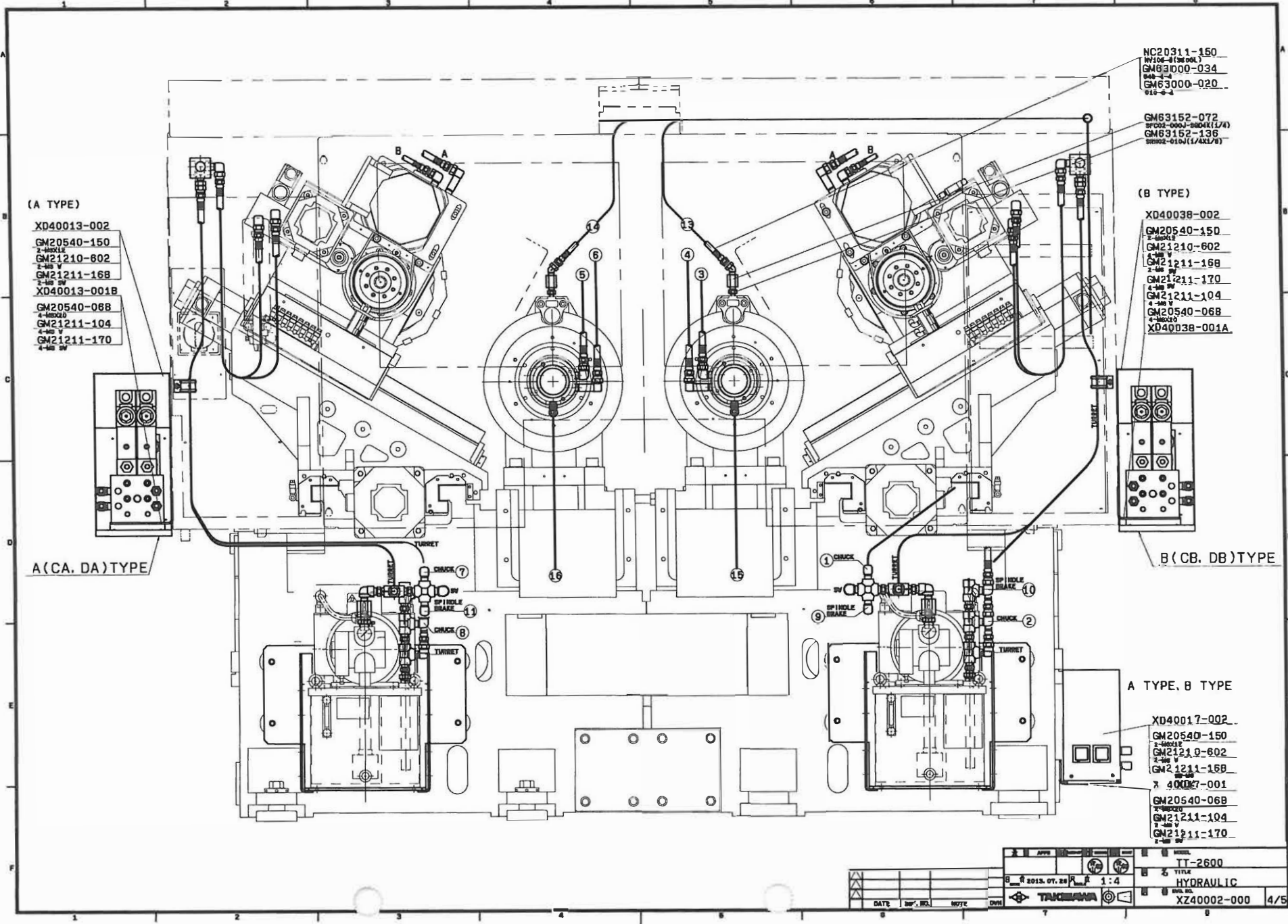


- ① L-CHUCK P PORT
- ② L-CHUCK T PORT
- ③ L-CHUCK A PORT
- ④ L-CHUCK B PORT
- ⑤ R-CHUCK A PORT
- ⑥ R-CHUCK B PORT
- ⑦ R-CHUCK P PORT
- ⑧ R-CHUCK T PORT
- ⑨ L-BRAKE P PORT
- ⑩ L-BRAKE T PORT
- ⑪ R-BRAKE P PORT
- ⑫ R-BRAKE T PORT

GM52998-201
1-PLATE (EXCEPT)
GM52004-701
2-ELBOW (EXCEPT)
GM52004-711
3-ELBOW (EXCEPT)
GM63152-188
4-ELBOW (EXCEPT)
GM63152-016
5-ELBOW (EXCEPT)

DATE	TOP. NO.	NOTE	DRW.	APP. NO.	REV.	DATE	BY	CHK.	DATE	BY	CHK.	DATE	BY	CHK.	DATE	BY	CHK.	DATE	BY	CHK.

MODEL: TT-2600
 TITLE: HYDRAULIC
 PART NO.: XZ40002-000 375
 SCALE: 1:4
 DESIGNED BY: [Signature]
 CHECKED BY: [Signature]



(A TYPE)

- XD40013-002
- GM20540-150
2-400V
- GM21210-602
2-400V
- GM21211-16B
2-400V
- XD40013-001B
- GM20540-06B
4-400V
- GM21211-104
4-400V
- GM21211-170
4-400V

(A(CA, DA) TYPE)

- NC20311-150
SPINDLE (1/AXL/6)
- GM63000-034
940-4
- GM63000-020
910-4

- GM63152-072
SPINDLE (1/AXL/7/4)
- GM63152-136
SPINDLE (1/AXL/6)

(B TYPE)

- XD40038-002
- GM20540-150
2-400V
- GM21210-602
2-400V
- GM21211-16B
2-400V
- GM21211-170
4-400V
- GM21211-104
4-400V
- GM20540-06B
4-400V
- XD40038-001A

(B(CB, DB) TYPE)

A TYPE, B TYPE

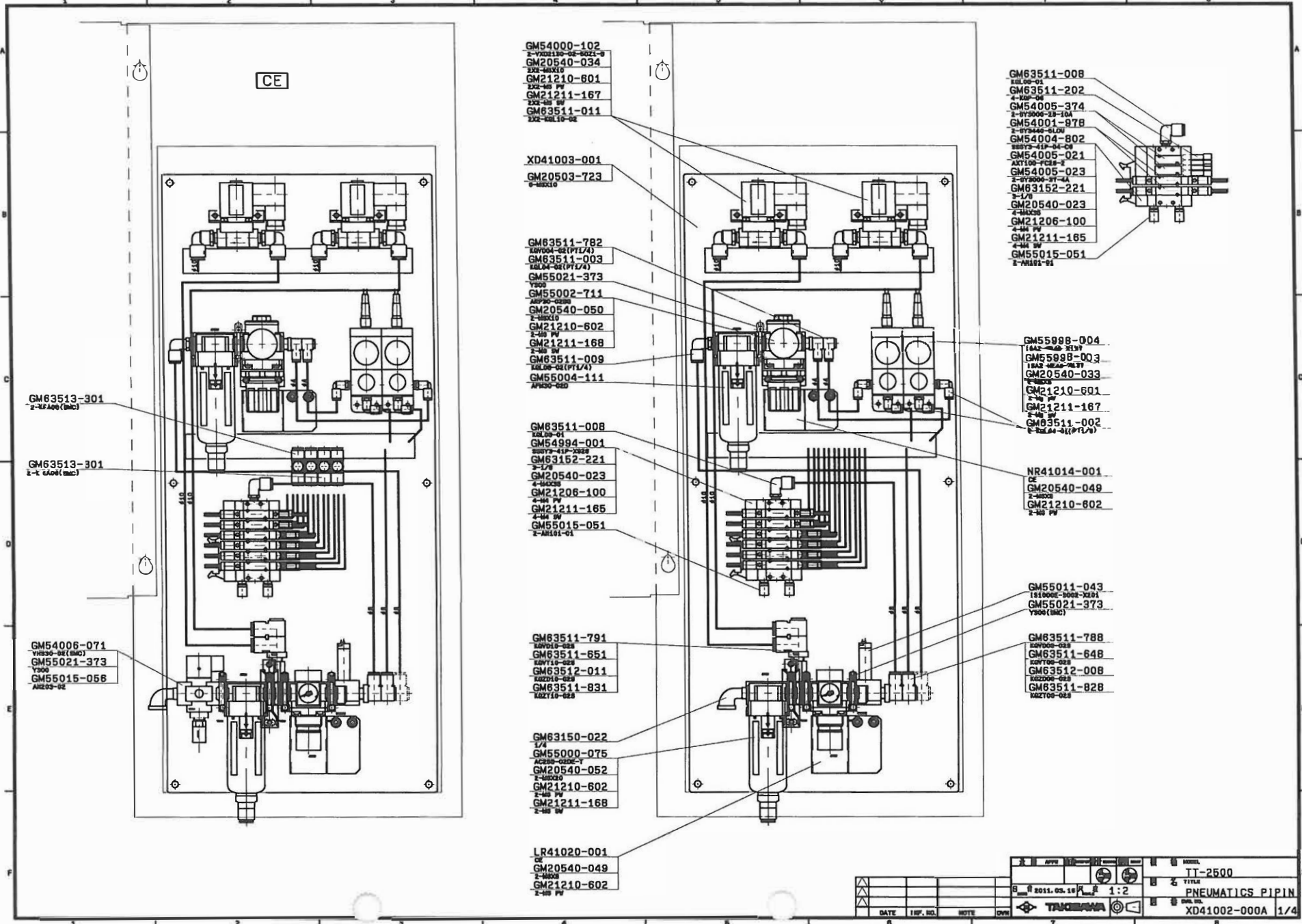
- XD40017-002
- GM20540-150
2-400V
- GM21210-602
2-400V
- GM21211-16B
2-400V
- XD40017-001
- GM20540-06B
4-400V
- GM21211-104
4-400V
- GM21211-170
4-400V

DATE	SUP. NO.	NOTE	REV.	MODEL	TT-2600
				TITLE	HYDRAULIC
				SCALE	1:4
				MANUFACTURER	TAKAMURA
				PART NO.	XZ40002-000
					4/5

HYDRAULIC
XZ40002-000

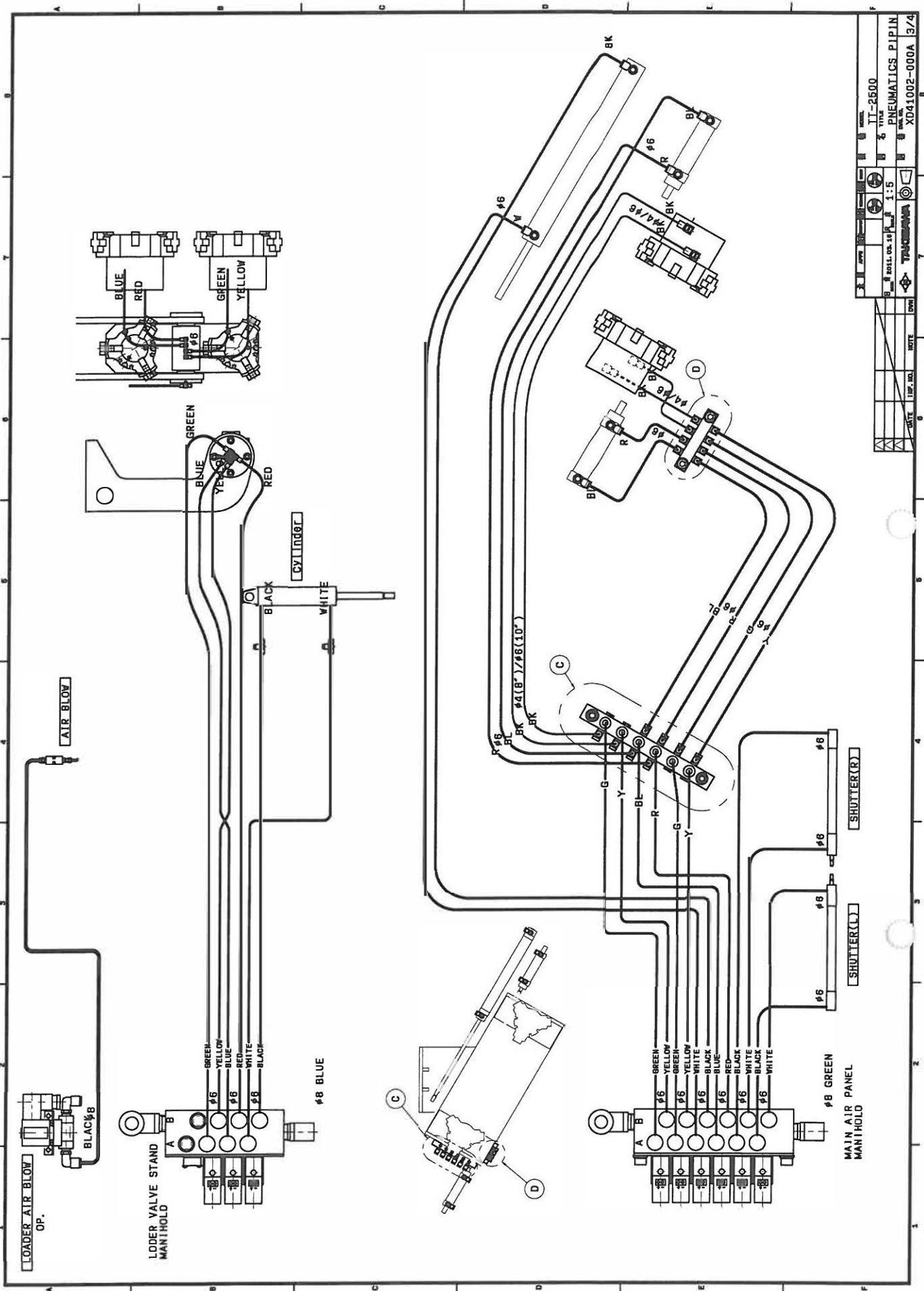
PART No.	PART NAME	(MAKER) MATERIAL	DIMENSION
GE61350-055	BOX TERMINALS	(TOGI)	BOXTM-1002
GK01230-049	COPPER PIPE	(JIS STD)	φ 2
GK03015-007	O-RING (P)	(NOK)	P-9
GK03018-015	ROUND HEAD MACHINE SCREW (+)	(JIS STD)	M4X16
GK03020-034	HEX. SOCKET HEAD CAP SCREW	(KKT)	M5X10
GK03020-036	HEX. SOCKET HEAD CAP SCREW	(KKT)	M5X20
GK03020-041	HEX. SOCKET HEAD CAP SCREW	(DAIKIN)	M5X45 (HB-100)
GK03020-059	HEX. SOCKET HEAD CAP SCREW	(KKT)	M6X60
GK03020-067	HEX. SOCKET HEAD CAP SCREW	(KKT)	M8X16
GK03020-101	HEX. SOCKET HEAD CAP SCREW	(DAIKIN)	M5X85 (HB-101)
GK03020-103	HEX. SOCKET HEAD CAP SCREW	(DAIKIN)	M5X165 (HB-103)
GK03020-183	HEX. SOCKET HEAD CAP SCREW	(KKT)	M8X125
GK03021-000	HEX. SOCKET HEAD CAP SCREW	(KKT)	M12X25
GK03041-002	PLAIN WASHER	(JIS STD)	M5
GK03041-003	PLAIN WASHER	(JIS STD)	M6
GK03041-004	PLAIN WASHER	(JIS STD)	M8
GK03041-006	PLAIN WASHER	(JIS STD)	M12
GK03042-001	SPRING WASHER	(JIS STD)	M4
GK03042-002	SPRING WASHER	(JIS STD)	M5
GK03042-003	SPRING WASHER	(JIS STD)	M6
GK03042-004	SPRING WASHER	(JIS STD)	M8
GK03042-006	SPRING WASHER	(JIS STD)	M12
GK03047-002	HEX. NUT	(JIS STD)	M5X0.8 (3)
GK03215-002	TEE	(IHARA)	ST3/8 (PT3/8)
GK03217-002	CROSS	(IHARA)	ST3/8 (PT3/8)
GK03222-005	BUSH	(IHARA)	ST-B-1/2X3/8
GK03226-002	HEX. NIPPLE	(IHARA)	ST-N-3/8
GK03227-003	DIFFERENT DIA NIPPLE	(IHARA)	ST-RN-1/2X3/8
GK03227-021	DIFFERENT DIA NIPPLE	(IHARA)	ST-RN-3/8X1/8
GK03231-002	HEX. SOCKET	(IHARA)	ST-S-3/8" (PT3/8)
GK05556-005	NIPPLE (LUBRICATION)	(EIKOSHA)	1/4X2.0
GK05558-151	SADDLE	(DAIWA)	CH-28
GK05676-004	TUBE	(NITTA)	N2-1-3/8 (φ 9.53)
GK05677-009	CONNECTOR	(NITTA)	C1N-3/8-PT3/8
GK05684-422	VINYL HOSE	(FUJI KOA)	25/33, L=1200
GK05713-111	HOSE BAND (WIRE)	(FUJI KOA)	35 (32-φ 35)
GM20010-209	ROUND HEAD MACHINE SCREW	(SANKO)	M4X0.7X8
GM20540-068	HEX. SOCKET HEAD CAP SCREW	(JIS STD)	M8X20
GM20540-150	HEX. SOCKET HEAD CAP SCREW	(JIS STD)	M6X12
GM21210-602	PLAIN WASHER	(SANKO)	M6
GM21211-104	WASHER	(JIS STD)	M8
GM21211-168	SPRING WASHER	(JIS STD)	M6
GM21211-170	SPRING WASHER	(JIS STD)	M8
GM50997-703	HYDRAULIC UNIT	(YUKEN)	UH2 UA2-68500-7
GM51007-021	SOLENOID VALVE	(YUKEN)	E-DSG-01-2D2-D24-60
GM51007-022	SOLENOID VALVE	(YUKEN)	E-DSG-01-2B2-D24-60
GM51007-023	SOLENOID VALVE	(YUKEN)	E-DSG-01-3C2-D24-60
GM51104-011	CHECK VALVE	(YUKEN)	CIT-03-04-50
GM51104-031	CHECK VALVE	(YUKEN)	MCT-01-0-30
GM51998-605	PRESSURE REDUCING VALVE	(YUKEN)	MRP-01-B-3041
GM52000-301	PRESSURE GAUGE (0-6MPA)	(YODO KEI)	IADGU-PT1/4-φ 39 6MPA85%SB
GM52004-701	CONNECTOR	(EFECTOR)	E10901
GM52004-711	PROTECTO COVER	(EFECTOR)	E30094
GM52998-201	PRESSURE SENSER	(EFECTOR)	PK6732
GM52999-301	PRESSURE GAUGE (0-5MPA)	(COPAL)	PG-35H-104R-PR2B
GM54055-021	THROTTLE CHECK VALVE	(HIROSE VA)	HT-720-01 (RP1/8)
GM63000-020	JOINT	(NITTA)	O10-6-4 (PF3/8, PT1/4)

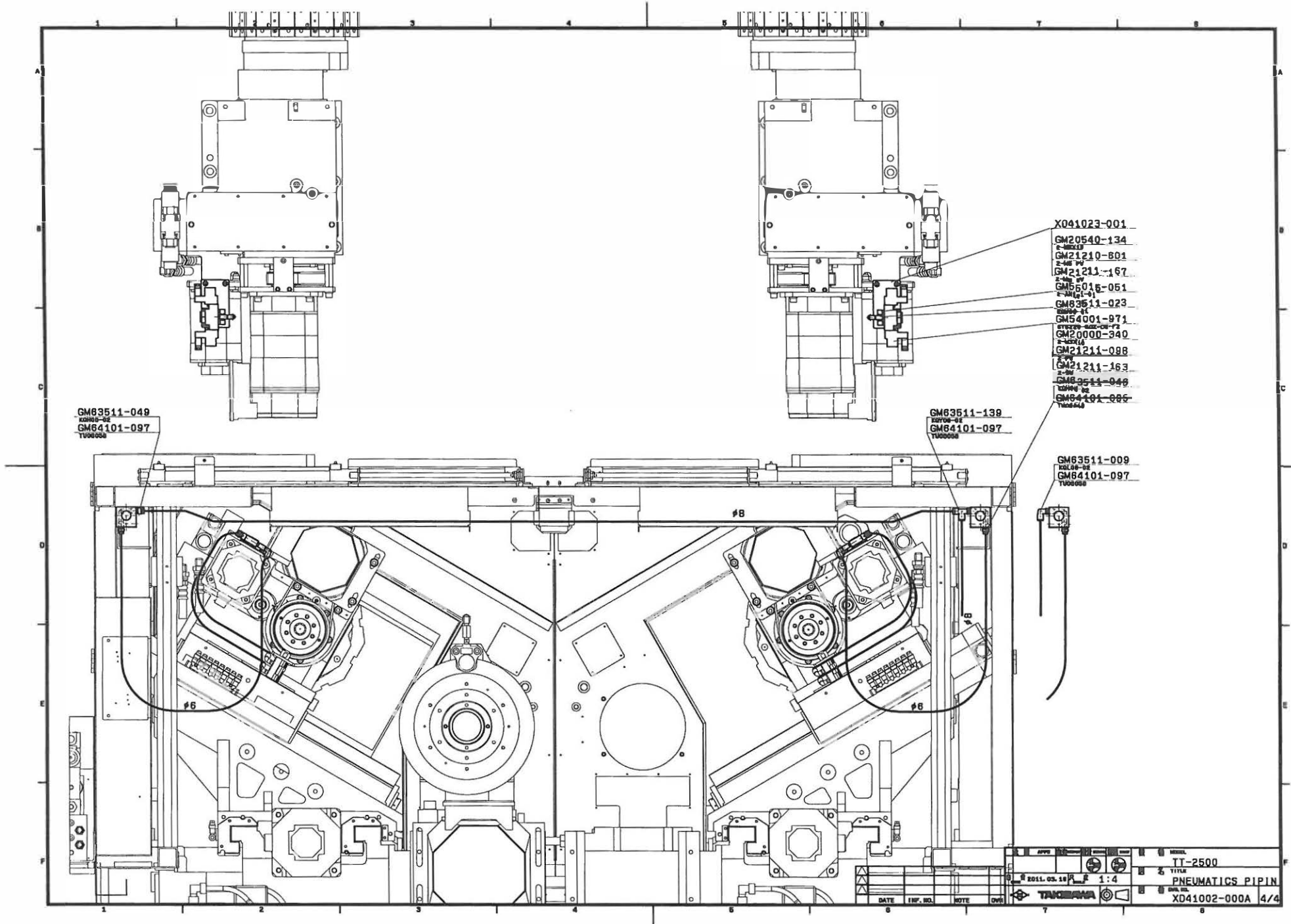
GM63000-023	CONNECTOR	(NITTA)	010-6-6
GM63000-029	ELBOW (SHORT TYPE)	(NITTA)	090-6-6
GM63000-034	PIPE FITTING	(NITTA)	045-4-4
GM63000-035	PIPE FITTING	(NITTA)	045-6-6
GM63001-011	ELBOW	(SHIMIZU S	SR-33-6X3 (PT1/8XPF1/4)
GM63001-118	ADAPTER	(SHIMIZU S	SR-13-6X9 (PT3/8XPF1/4)
GM63001-223	SOKKET	(SHIMIZU S	MS-2-9 (G3/8)
GM63001-302	PIPE FITTING	(SHIMIZU S	SR-33L-9 (PF3/8XPT3/8)
GM63150-065	ELBOW	(JIS STD)	3/4 (25KG)
GM63150-205	SOCKET	(JIS STD)	3/4 (25KG)
GM63150-291	BUSHING	(JIS STD)	1X3/4 (25KG)
GM63150-376	REDUCER	(JIS STD)	3/4X1/2 (25KG)
GM63152-016	ELBOW	(IHARA)	SLC03-000J (3/8)
GM63152-072	COUPLING	(IHARA)	SFC02-000J-SGD4K (1/4)
GM63152-123	NIPPLE	(IHARA)	SNP03-000J-SGD4K (3/8)
GM63152-136	NIPPLE	(IHARA)	SRN02-010J (1/4X1/8)
GM63152-166	BUSHING (SGD4K)	(IHARA)	SBU03-020J (3/8X1/4)
GM63152-170	BUSHING (SGD4K)	(IHARA)	SBU06-030J (3/4X3/8)
GM63152-221	TAPER PLUG	(IHARA)	SPA01-000J-S45C (1/8)
GM63152-222	TAPER PLUG	(IHARA)	SPA02-000J-S45C (1/4)
GM63152-223	TAPER PLUG	(IHARA)	SPA03-000J-S45C (3/8)
NC00021-009A	MANIBLOCK	SS400	
NC20311-050	HOSE	(YOKOHAMA)	NV105-6 (500L)
NC20311-150	HOSE	(YOKOHAMA)	NV105-6 (3500L)
NC20312-050	HOSE	(YOKOHAMA)	NV105-9 (500L)
NC20312-100	HOSE	(YOKOHAMA)	NV105-9 (1000L)
NC20312-108	HOSE	(YOKOHAMA)	NV105-9 (1400L)
NC20312-110	HOSE	(YOKOHAMA)	NV105-9 (1500L)
NC20312-114	HOSE	(YOKOHAMA)	NV105-9 (1700L)
NC20312-120	HOSE	(YOKOHAMA)	NV105-9 (2000L)
NC20312-124	HOSE	(YOKOHAMA)	NV105-9 (2200L)
NC20312-156	HOSE	(YOKOHAMA)	NV105-9 (3800L)
NC20312-184	HOSE	(YOKOHAMA)	NV105-9 (5200L)
NC20312-186	HOSE	(YOKOHAMA)	NV105-9 (5300L)
NC20312-190	HOSE	(YOKOHAMA)	NV105-9 (5500L)
NR40006-001	BLOCK	DENSE BAR	
NR40011-002	COVER	SPCC	
NR40027-001	COVER	SPCC	
NR40027-002	COVER	SPCC	
NR40116-001	MANIFOLD	DENSE BAR	66X145X125MM
TA00045-006A	VINYL PIPE JOINT	S45C	PT3/4"
XD40012-001	MANIFOLD	DENSE BAR	66X145X125MM
XD40013-0101B	BRACKET	SPHC	
XD40013-002	COVER	SPCC	
XD40017-001	BRACKET	SPHC	
XD40017-002	COVER	SPCC	
XD40023-001	PANEL	SPCC	
XD40025-001A	BRACKET	SPHC	
XD40026-001	BLOCK	SS400	
XD40027-001	BLOCK	SS400	
XD40037-001A	PANEL	SPCC	
XD40038-001A	BRACKET	SPHC	
XD40038-002	COVER	SPCC	
XD40042-001	BRACKET	SPCC	



DATE	IMP. NO.	NOTE	OWN	REV.	DATE	IMP. NO.	NOTE	OWN	REV.

MODEL	TT-2500
TITLE	PNEUMATICS PIPIN
DWG. NO.	XD41002-000A 1/4

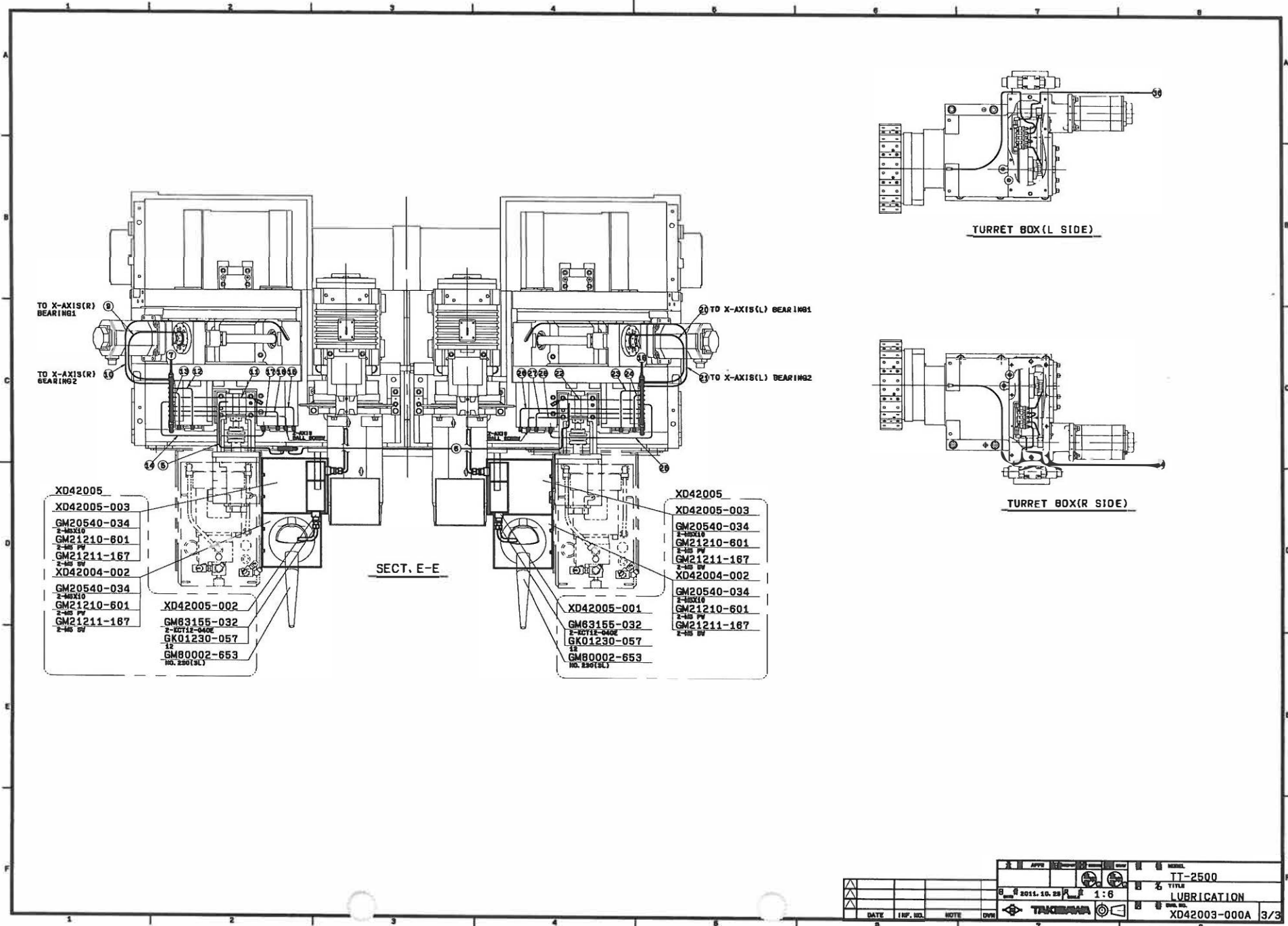




PNEUMATIC
XD41002-000A

PART No.	PART NAME	(MAKER) MATERIAL	DIMENSION
GK00261-002	TUBE	(LUBCON)	φ 6
GK01230-056	COPPER PIPE	(JIS STD)	φ 10
GK05601-175	PIPE FITTING	(AMC)	LLC-UP-10X1/4
GM20000-340	ROUND HEAD MACHINE SCREW	(SANKO)	M3X10
GM20010-673	ROUND HEAD MACHINE SCREW	(JIS STD)	M5X0. 8X8
GM20503-723	BOLT	(SANKO)	M6X10
GM20540-023	HEX. SOCKET HEAD CAP SCREW	(JIS STD)	M4X35
GM20540-033	HEX. SOCKET HEAD CAP SCREW	(JIS STD)	M5X8
GM20540-034	HEX. SOCKET HEAD CAP SCREW	(JIS STD)	M5X10
GM20540-039	HEX. SOCKET HEAD CAP SCREW	(JIS STD)	M5X35
GM20540-049	HEX. SOCKET HEAD CAP SCREW	(JIS STD)	M6X8
GM20540-050	HEX. SOCKET HEAD CAP SCREW	(JIS STD)	M6X10
GM20540-052	HEX. SOCKET HEAD CAP SCREW	(JIS STD)	M6X20
GM20540-134	HEX. SOCKET HEAD CAP SCREW	(JIS STD)	M5X12
GM20540-150	HEX. SOCKET HEAD CAP SCREW	(JIS STD)	M6X12
GM21206-100	PLAIN WASHER	(JIS STD)	M4
GM21210-601	PLAIN WASHER	(SANKO)	M5
GM21210-602	PLAIN WASHER	(SANKO)	M6
GM21211-098	WASHER	(JIS STD)	M3
GM21211-163	SPLING WASHER	(JIS STD)	M3
GM21211-165	SPLING WASHER	(JIS STD)	M4
GM21211-167	SPRING WASHER	(JIS STD)	M5
GM21211-168	SPRING WASHER	(JIS STD)	M6
GM54000-102	SOLENOID VALVE	(SMC)	VXD2130-02-5DZ1-B
GM54001-971	SOLENOID VALVE	(SMC)	SY5220-5DZ-C6-F2
GM54001-978	SOLENOID VALVE	(SMC)	SY3440-5LOU
GM54004-802	MANIFOLD	(SMC)	SS5Y3-41P-04-C6
GM54005-021	CABLE	(SMC)	AXT100-FC26-2 (3M)
GM54005-023	CONNECTOR	(SMC)	SY3000-37-4A
GM54005-374	BLANKING PLATE	(SMC)	SY3000-26-10A
GM54006-071	HAND VALVE	(SMC)	VHS30-02
GM54994-001	MANIFOLD VALVE	(SMC)	SS5Y3-41P-X926
GM54994-002	MANIFOLD VALVE	(SMC)	SS5Y3-41P-X927
GM55000-075	AIR COMBINATION	(SMC)	AC25B-02DE-T
GM55002-711	REGULATOR	(SMC)	ARP30-02BG
GM55004-111	MIST SEPARATOR	(SMC)	AFM30-02D
GM55011-043	PRESSURE SWITCH	(SMC)	IS1000E-3002-X201
GM55015-051	SILENCER	(SMC)	AN101-01 (PT1/8)
GM55015-056	SILENCER	(SMC)	AN203-02
GM55021-373	SPACER	(SMC)	Y300
GM55998-003	AIR CATCH SENSOR	(SMC)	ISA2-HE45-X137
GM55998-004	AIR CATCH SENSOR	(SMC)	ISA2-GE45-X137
GM63150-022	ELBOW	(JIS STD)	1/4 (25KG)
GM63151-049	BARREL NIPPLE	(JIS STD)	2 (25KG)
GM63152-221	TAPER PLUG	(IHARA)	SPA01-000J-S45C (1/8)
GM63152-303	PIPE FITTING	(IHARA)	KC6-PT1/4-B
GM63511-002	ELBOW UNION	(SMC)	KQL04-01 (PT1/8)
GM63511-003	ELBOW UNION	(SMC)	KQL04-02 (PT1/4)
GM63511-008	ELBOW UNION	(SMC)	KQL08-01 (PT1/8)
GM63511-009	ELBOW UNION	(SMC)	KQL08-02 (PT1/4)
GM63511-011	ELBOW UNION	(SMC)	KQL10-02 (PT1/4)
GM63511-023	ELBOW UNION	(SMC)	KQW06-01 (PT1/8)
GM63511-046	HALF UNION	(SMC)	KQH06-02 (PT1/4)
GM63511-049	HALF UNION	(SMC)	KQH08-02 (PT1/4)
GM63511-051	HALF UNION	(SMC)	KQH10-02 (PT1/4)
GM63511-139	UNION TEE	(SMC)	KQY08-02 (PT1/4)
GM63511-202	PLUG	(SMC)	KQP-06

GM63511-648	ELBOW	(SMC)	KQVT08-02S
GM63511-651	ELBOW	(SMC)	KQVT10-02S
GM63511-782	ELBOW	(SMC)	KQVD04-02S
GM63511-788	ELBOW UNION	(SMC)	KQVD08-02S
GM63511-791	ELBOW	(SMC)	KQVD10-02S
GM63511-828	TEE	(SMC)	KQZT08-02S
GM63511-831	ELBO	(SMC)	KQZT10-02S
GM63512-008	ELBOW UNION	(SMC)	KQZD08-02S (1/4)
GM63512-011	ELBOW UNION	(SMC)	KQZD10-02S (1/4)
GM63513-301	EXHAUST VALVE	(SMC)	KEA06
GM64101-094	TUBE (POLYURETHANE)	(SMC)	TU0425B
GM64101-095	TUBE (POLYURETHANE)	(SMC)	TU0604B
GM64101-097	TUBE (POLYURETHANE)	(SMC)	TU0805B
GM64101-100	TUBE	(SMC)	TU065B
GM64101-202	TUBE (POLYURETHANE)	(SMC)	TU0604W
GM64101-204	TUBE (POLYURETHANE)	(SMC)	TU0805BU
GM64101-205	TUBE (POLYURETHANE)	(SMC)	TU0604R
GM64101-206	TUBE (POLYURETHANE)	(SMC)	TU0604BU
GM64101-207	TUBE (POLYURETHANE)	(SMC)	TU0604Y
GM64101-208	TUBE (POLYURETHANE)	(SMC)	TU0604G
GM64101-209	TUBE (POLYURETHANE)	(SMC)	TU0805G
HR99757-001	BLOCK	DENSE BAR	
LR41020-001	COVER	SPCC	
NR41003-004	COVER	SPCC	
NR41014-001	COVER	SPCC	
NR41112-000E	ASSEMBLY DRAWING		
XD41003-001	PLATE	SPCC	
XD41015-001	BRACKET	SPCC	
XD41023-001	PLATE	SPCC	

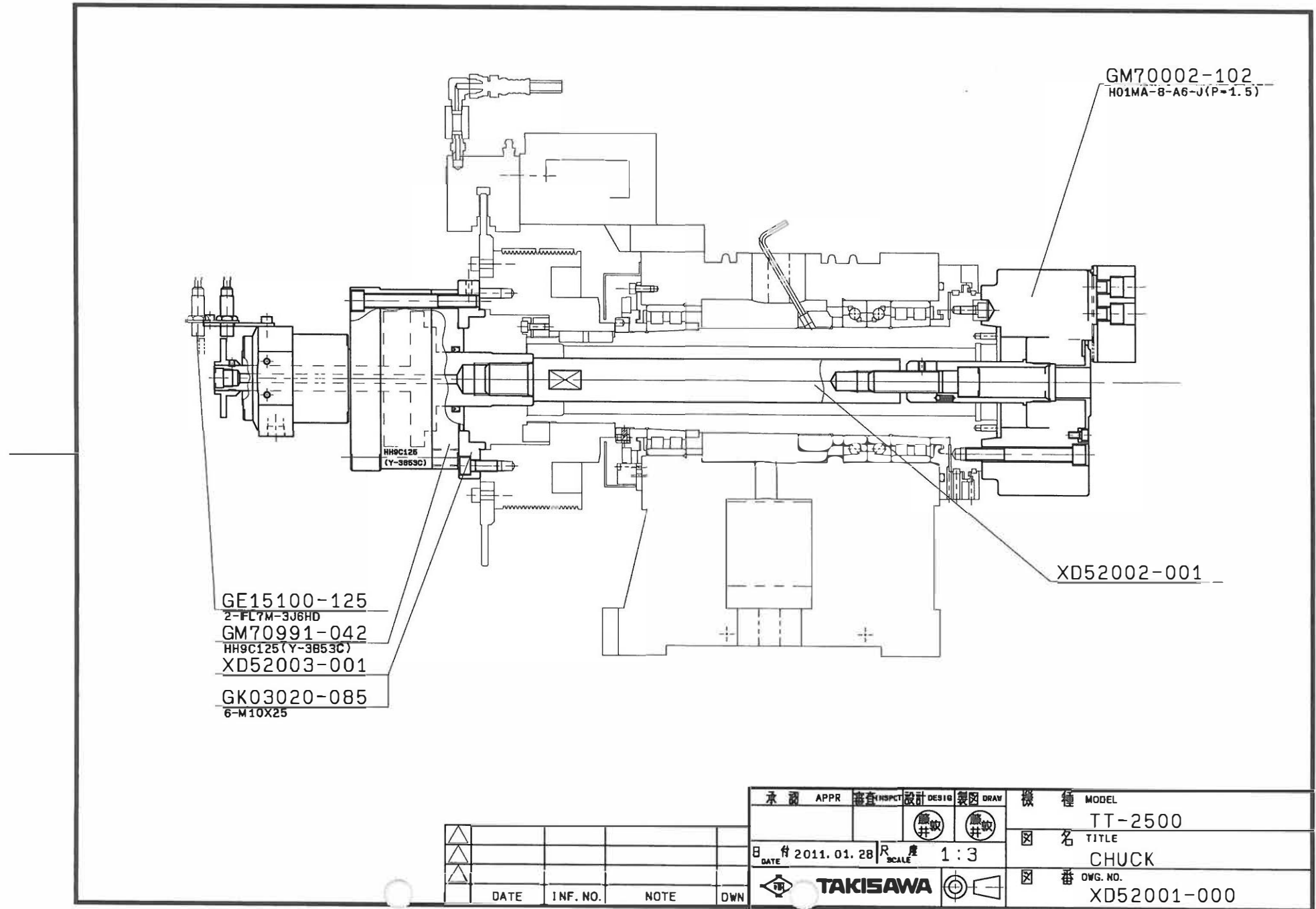


DATE	REV.	NO.	NOTE	OWN.

APPV	REV.	NO.	DATE	REV.	NO.	DATE	REV.	NO.	DATE
2011.10.25 1:6 TAKIYAMA					TT-2500 LUBRICATION XZ04070-101 3/3				

LUBRICATION
XD42003-000A

PART No.	PART NAME	(MAKER) MATERIAL	DIMENSION
GK01230-057	COPPER PIPE		φ 12
GK03020-034	HEX. SOCKET HEAD CAP SCREW	(KKT)	M5X10
GK03020-050	HEX. SOCKET HEAD CAP SCREW	(KKT)	M6X10
GK03020-051	HEX. SOCKET HEAD CAP SCREW	(KKT)	M6X16
GK03020-053	HEX. SOCKET HEAD CAP SCREW	(KKT)	M6X25
GK03842-007	GUARD SPRING	(LUBE)	φ 6X1500L
GK05553-033	NIPPLE (LUBRICATION)	(SHOWA)	PD4 (φ 4, PT1/8, M8X1)
GK05553-034	NIPPLE (LUBRICATION)	(SHOWA)	PD6 (φ 6, PT1/8, M10X1)
GK05553-050	ELBOW (LUBRICATION)	(SHOWA)	PH4 (φ 4, PT1/8, M8X1)
GK05553-053	ELBOW (LUBRICATION)	(SHOWA)	PHD6 (φ 6, PT1/8, M10X1)
GK05554-000	SLEEVE (LUBRICATION)	(SHOWA)	PB4 (φ 4)
GK05554-001	SLEEVE (LUBRICATION)	(SHOWA)	PB6 (φ 6)
GK05554-010	CLAMP PLUG (LUBRICATION)	(SHOWA)	PA4 (φ 4, M8X1)
GK05554-011	CLAMP PLUG (LUBRICATION)	(SHOWA)	PA6 (φ 6, M10X1)
GK05554-028	SEAL PLUG (LUBRICATION)	(SHOWA)	PG004 (M8X1)
GK05557-603	TUBE	(JYUNKOSHA)	170-06 (φ 6)
GK05558-000	SADDLE	(SHOWA)	PZ-14 (φ 4X1)
GK05564-007	CONNECTOR	(SHOWA)	PN-106 (M10X1, M14X1)
GK05567-047	DISTRIBUTING PLUNGER	(SHOWA)	DPB-12-0.06
GK05567-070	DISTRIBUTING PLUNGER	(SHOWA)	DPB-18-0.06
GK05567-071	DISTRIBUTING PLUNGER	(SHOWA)	DPB-110-0.06
GM20540-034	HEX. SOCKET HEAD CAP SCREW	(JIS STD)	M5X10
GM21210-601	PLAIN WASHER	(SANKO)	M5
GM21211-167	SPRING WASHER	(JIS STD)	M5
GM60000-232	LUBRICATION UNIT	(LUBE)	AMZ-3-100S-30LP
GM63155-032	PIPE FITTING	(IHARA)	KCT12-040E (φ 12X1/2)
GM63401-042	SEAL PLUG	(SHOWA)	PG10N
GM63401-053	NIPPLE (LUBRICATION)	(SHOWA)	KH-4N (PT1/8, M10X1)
GM63401-501	DISTRIBUTER	(SHOWA)	DB4K
GM63900-312	PIPE GRIP	(LUBE)	106311 PC-4-1L (4X1)
GM80002-653	OIL JUG	(FURUPLA)	NO. 230 (3L)
XD42004-002	BRACKET	SPCC	
XD42005-001	BOX	SPCC	
XD42005-002	BOX	SPCC	
XD42005-003	BRACKET	SPCC	



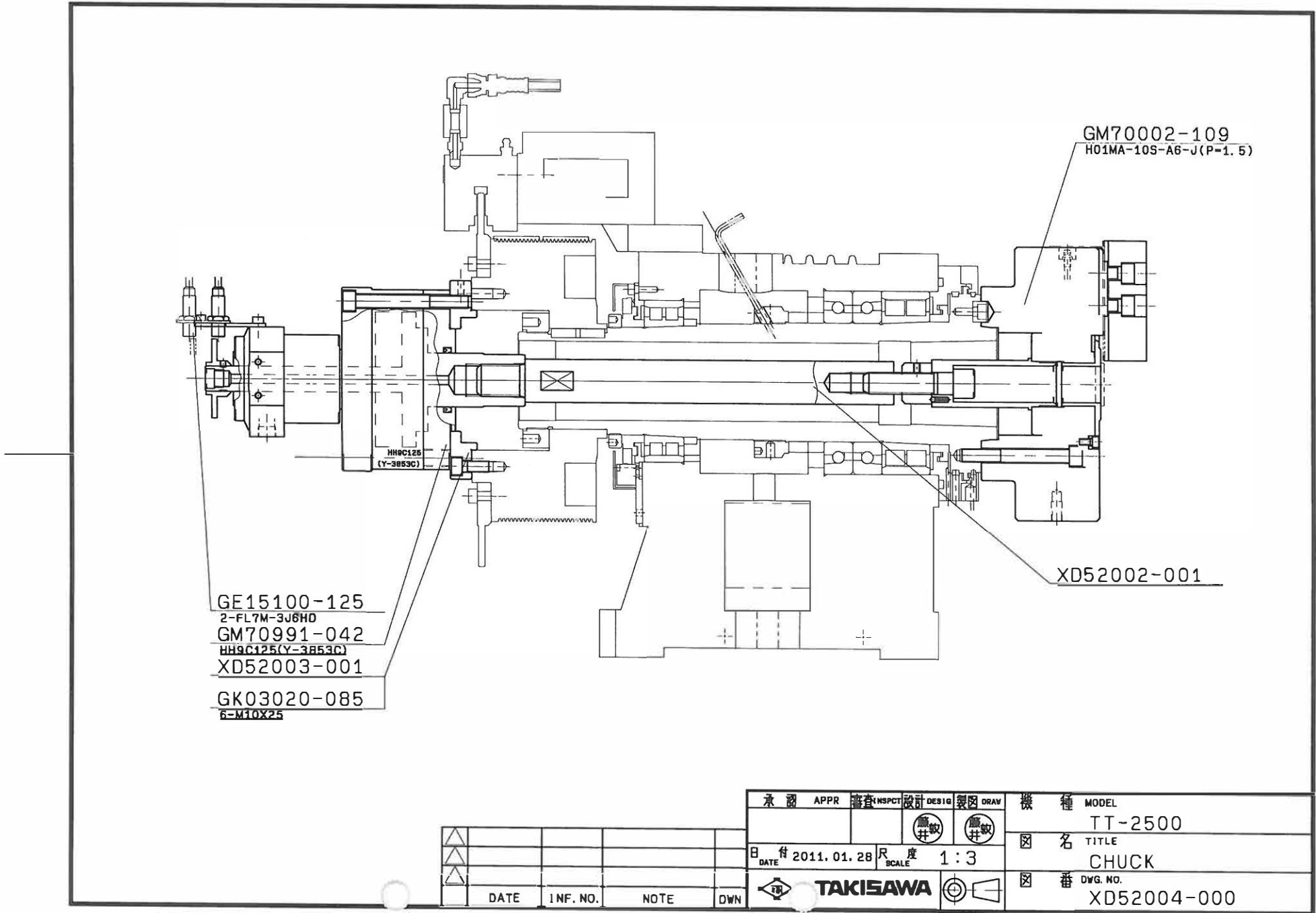
承認 APPR	検査 (INSPECT)	設計 (DESIGN)	製図 (DRAW)	機種 MODEL
				TT-2500
				名 TITLE
				CHUCK
				番 DWG. NO.
				XD52001-000

DATE 2011.01.28 SCALE 1:3



CHUCK (L)
XD52001-000

PART No.	PART NAME	(MAKER) MATERIAL	DIMENSION
GE15100-125	PROXIMITY SWITCH	(YAMATAKE)	FL7M-3J6HD
GK03020-085	HEX. SOCKET HEAD CAP SCREW	(KKT)	M10X25
GM70002-102	HYDRAULIC CHUCK	(HOWA)	H01MA-8S-A6-J
GM70991-042	ROTATING CYLINDER	(HOWA)	HH9C125 (Y-3853C)
XD52002-001	BAR	S45C	M30X3.5/M20X2.5/345L
XD52003-001	FLANGE	S45C	



CHUCK (R)
XD52004-000

PART No.	PART NAME	(MAKER) MATERIAL	DIMENSION
GE15100-125	PROXIMITY SWITCH	(YAMATAKE)	FL7M-3J6HD
GK03020-085	HEX. SOCKET HEAD CAP SCREW	(KKT)	M10X25
GM70002-109	HYDRAULIC CHUCK	(HOWA)	HO1MA-10S-A6-J P=1.5
GM70991-042	ROTATING CYLINDER	(HOWA)	HH9C125 (Y-3853C)
XD52002-001	BAR	S45C	M30X3.5/M20X2.5/345L
XD52003-001	FLANGE	S45C	

