



Die Cast Machinery, LLC Inventory number: 4370

We offer for sale, subject to prior sale and the terms listed below:

Used Advance Products 25 Pound Capacity Multi-Link Automatic Ladle for Non-Ferrous Aluminum and Brass Die Casting and Foundry Operations

Model: SL 1200 HS

Control Version: Mitsubishi

Status: Sold

Specifications:

Metric / U.S. Standard

Total Stroke (Maximum):	Adjustable 1800 mm / Adjustable 71 inches
Forward Stroke (Maximum):	Adjustable 1270 mm / Adjustable 50 inches
Reach Back:	Adjustable 530 mm / Adjustable 21 inches
Pour Capacity (Aluminum):	11 Kg / 25 pounds
Cycle Speed:	Adjustable / Adjustable
Power Requirements	208-230/3/60 20 amp / 208-230/3/60 20 amp
Motor Drive:	Brushless Servo / Brushless Servo
Side of Operation:	Helper Side / Helper Side
HMI Interface:	Touch-Screen Color LCD / Touch-Screen Color LCD
Program Storage Capacity:	500 programs / 500 programs
Control Weight:	114 KG / 250 pounds
Mechanism Weight (power-head):	341 KG / 750 pounds

Features & Accessories:

Mitsubishi Solid State PLC controls with Auto Teach Mode
Advance Forward on Pour Command - Pour Forward
Helper-Side Unit
Adjust shot weight on the fly during operation
LCD Color Touch-Screen HMI with up to 500 program storage
Equipment with Remote Operator Push-Button Control Station

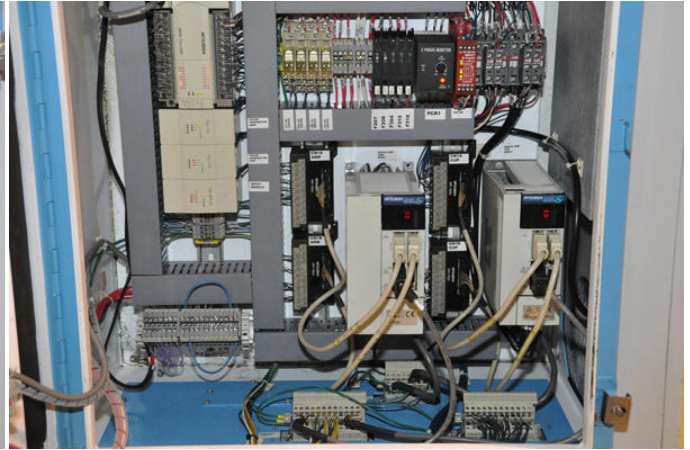
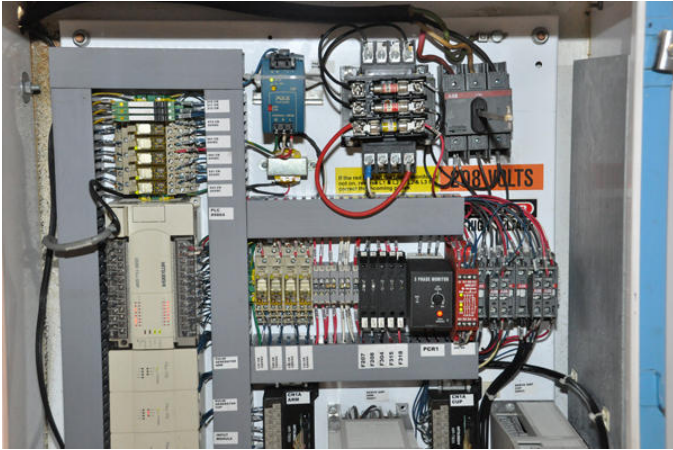
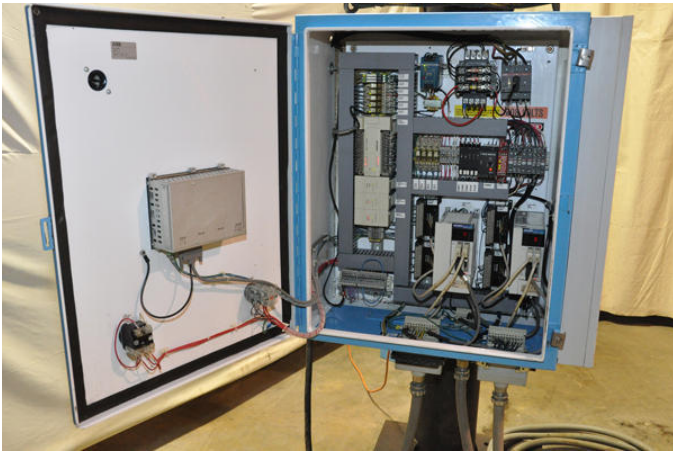
Terms of Sale:

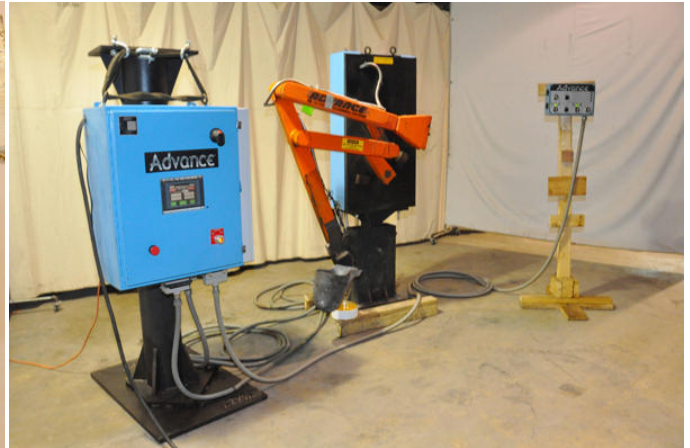
Price: [request quotation](#)

Shipping Terms: F.O.B. Warehouse

Product Photos:

Click on any image for a larger view







Description: Used, Advance Products Model SL 1200 HS 25 Pound Capacity Multi-Link Automatic Ladle for Non-Ferrous Aluminum and Brass Die Casting and Foundry Operations For Sale, Features include: Mitsubishi Solid State PLC controls with Auto Teach Mode, Advance Forward on Pour Command - Pour Forward, Helper-Side Unit, Adjust shot weight on the fly during operation, LCD Color Touch-Screen HMI with up to 500 program storage, Equipment with Remote Operator Push-Button Control Station, Mitsubishi Controls, Second Hand, DCM-4370

PURCHASER'S (Buyer's) RESPONSIBILITY AND INDEMNITY: Used machines, equipment or any part thereof, may not incorporate approved activating mechanisms, operator safety devices or safety guards as required by OSHA or otherwise. It shall be a Purchaser's (Buyer's) responsibility to ensure that any and all merchandise or equipment purchased from Die Cast Machinery, LLC or its affiliates is installed and operated in a proper and safe manner. Purchaser (Buyer) also acknowledges that it may have to install or change guards, safeties, warnings or other components to ensure that the merchandise or machines purchased will conform to all laws, codes, regulations, ordinances, statutes, insurance requirements and industry standards. Purchaser agrees to defend, indemnify and hold harmless Die Cast Machinery, LLC from and against all suits, claims, costs, damages and expenses, including, but not limited to, reasonable attorneys' fees, arising out of, or in connection with, the transportation, purchase, ownership, or use of the merchandise or equipment sold hereunder. Information has been obtained from sources deemed reliable, buyers should avail themselves of the opportunity to inspect the items before purchase.