



DIE CAST MACHINERY LLC

3246 West Monroe Street
Waukegan, IL 60085-3029 USA
1-847-360-9170 Phone
www.diecastmachinery.com

Die Cast Machinery, LLC Inventory number ??: 5155

We offer for sale, subject to availability, prior sale and the terms listed below:

Used Arrow-Acme 600 pound capacity Power Roll-Over Transfer Ladle - Forklift Type Bull Ladle for Molten Aluminum or Zinc - DC Powered - Arrow-Acme Type

Model: PL855

Note: Transfer ladle is full of metal. (See Photos)

Status: Sold

Specifications:

Metric / U.S. Standard

Length:	1193.8 mm / 47 inches
Width:	914.4 mm / 36 inches
Opening size under cover:	228.6 x 355.6 mm / 9 x 14 inches
Aluminum Capacity:	272 kg / 600 pounds
Zinc Capacity:	680 kg / 1500 pounds
Approx. Weight of Ladle:	1061 kg / 2340 pounds

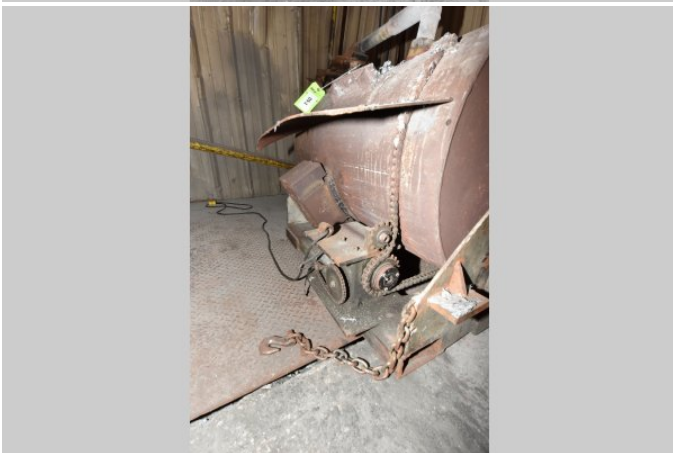
Terms of Sale:

Price: [request quotation](#)

Shipping Terms: Ex-works

Product Photos:

Click on any image for a larger view



Description: Used, Arrow-Acme Model PL855 600 pound capacity Power Roll-Over Transfer Ladle - Forklift Type Bull Ladle for Molten Aluminum or Zinc - DC Powered - Arrow-Acme Type For Sale, Features include: , , , , , 12 volt DC Controls, Second Hand, DCM-5155

PURCHASER'S (Buyer's) RESPONSIBILITY AND INDEMNITY: Used machines, equipment or any part thereof, may not incorporate approved activating mechanisms, operator safety devices or safety guards as required by OSHA or otherwise. It shall be a Purchaser's (Buyer's) responsibility to ensure that any and all merchandise or equipment purchased from Die Cast Machinery, LLC or its affiliates is installed and operated in a proper and safe manner. Purchaser (Buyer) also acknowledges that it may have to install or change guards, safeties, warnings or other components to ensure that the merchandise or machines purchased will conform to all laws, codes, regulations, ordinances, statutes, insurance requirements and industry standards. Purchaser agrees to defend, indemnify and hold harmless Die Cast Machinery, LLC from and against all suits, claims, costs, damages and expenses, including, but not limited to, reasonable attorneys' fees, arising out of, or in connection with, the transportation, purchase, ownership, or use of the merchandise or equipment sold hereunder. Information has been obtained from sources deemed reliable, buyers should avail themselves of the opportunity to inspect the items before purchase.