



Die Cast Machinery, LLC Inventory number ??: 5453

We offer for sale, subject to availability, prior sale and the terms listed below:

Used Buhler Model: Evolution Ev B 220 DL 2243 Metric Ton (22000 kN) 2472 U.S. Ton Horizontal Cold Chamber Aluminum High Pressure Die Casting Machine

Model: Evolution Ev B 220 DL

Complete Buhler Die Casting Cell with Data@Net Controls, Striko Dosing Furnace, ABB Six Axis Robot Die Spray System, ABB Robot Extractor, Automated Trim Press, etc.

Status: Sold

Specifications:	Metric / U.S. Standard
Clamping Force:	22,000 kN (2243 Metric Ton) / 2486 tons
Die Thickness (Minimum - Maximum):	965 to 1930 mm / 38.0 to 76.0 inches
Platen Dimensions (horizontal x vertical):	2390x 2390 mm / 94.1 x 94.1 inches
Clearance between tie bars:	1600 mm / 63.0 x 63.0 inches
Moving Platen Stroke (maximum):	1120 mm / 44.1 inches
Injection Plunger Stroke (maximum):	1150 mm / 45.3 inches
Injection Positions:	0 to -420 mm / 0 to -16.53 inches
Injection Force / Intensified:	565 / 1526 kN / 63.6 / 171.6 tons
Maximum Ejector Force / Stroke:	500 kN / 240 mm / 56.5 tons / 9.44 inches
Machine Controls:	Buhler Data@Net (DataNet) / Buhler Data@Net (Datamet)
Main Motor:	90 & 45 kW / 120 & 60 HP
Machine Weight	128,500 kg / 282,000 pounds

Features & Accessories:

Fully Automatic Dual Automatic Tie Bar Pulling - Top Two Tie Bars
Six Auxiliary Hydraulic Core Circuits - Four on Moving Platen - Two on Fixed Platen
Striko Westoffen W1700S ProDos Electric Heated Aluminum Dosing Furnace
ABB IRB 6650/3.2-125 Six Axis Foundry Grade Industrial Robot Parts Extractor - Extracts Castings from Die Cast Machine, Water Quenches, Loads & Unloads Automated Trim Press
Cell includes Quench Tank Cooling System with Heat Exchanger, 50 Ton Vertical Trim Press, Dual Zone Hot Oil Temperature Control Unit, Protective Fencing, etc.

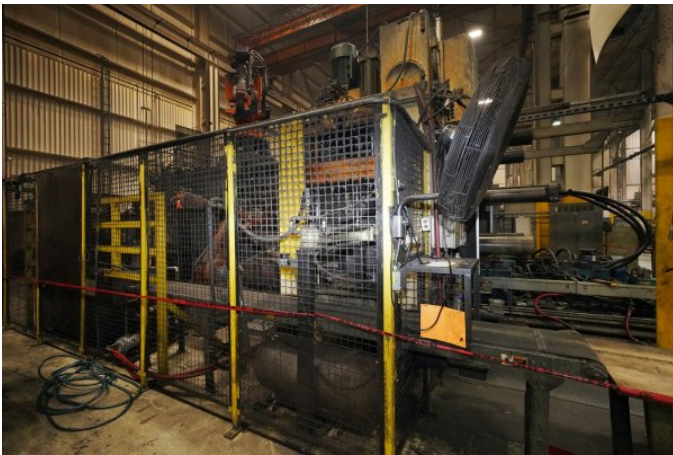
Terms of Sale:

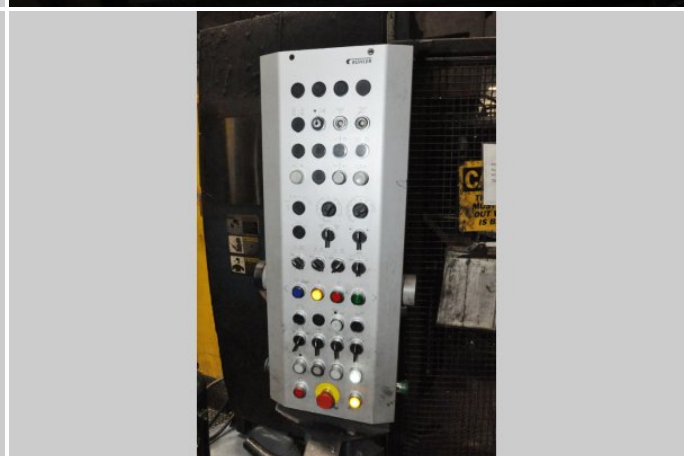
Price: [request quotation](#)

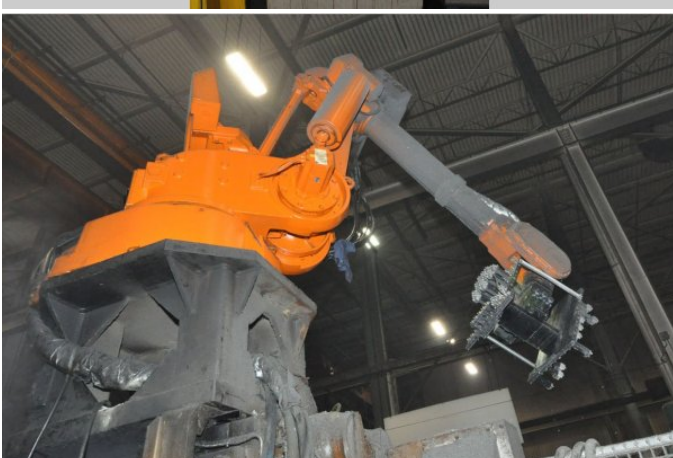
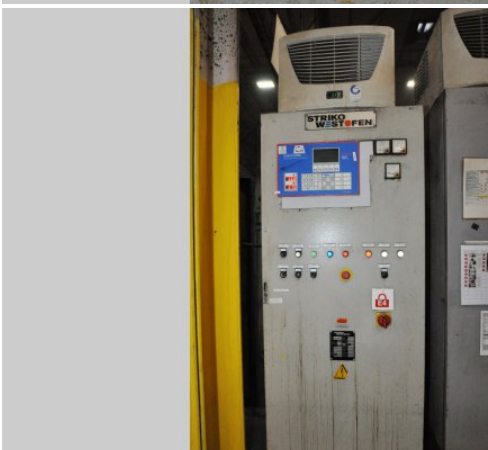
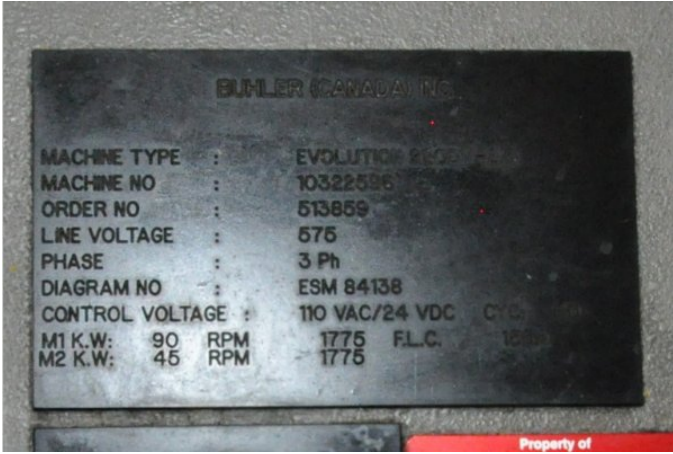
Shipping Terms: Ex-works

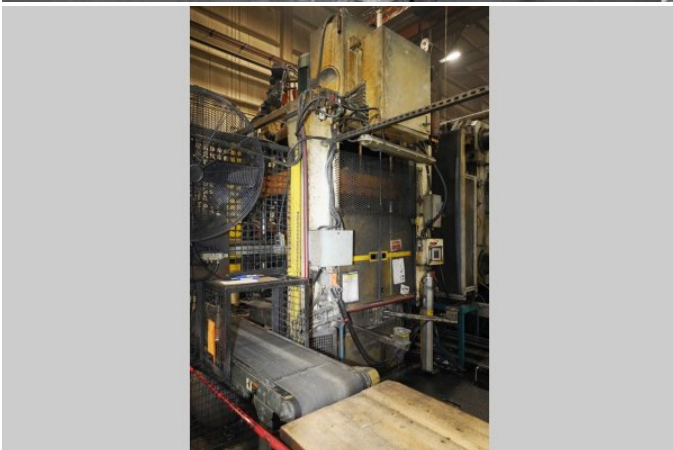
Product Photos:

Click on any image for a larger view









Description: Used, Buhler Model Evolution Ev B 220 DL 2243 Metric Ton (22000 kN) 2472 U.S. Ton Horizontal Cold Chamber Aluminum High Pressure Die Casting Machine For Sale, Features include: Fully Automatic Dual Automatic Tie Bar Pulling - Top Two Tie Bars, Six Auxiliary Hydraulic Core Circuits - Four on Moving Platen - Two on Fixed Platen, Striko Westoffen W1700S ProDos Electric Heated Aluminum Dosing Furnace, ABB IRB 6650/3.2-125 Six Axis Foundry Grade Industrial Robot Parts Extractor - Extracts Castings from Die Cast Machine, Water Quenches, Loads & Unloads Automated Trim Press, Cell includes Quench Tank Cooling System with Heat Exchanger, 50 Ton Vertical Trim Press, Dual Zone Hot Oil Temperature Control Unit, Protective Fencing, etc., , Buhler Data@Net Controls, Second Hand, DCM-5453

PURCHASER'S (Buyer's) RESPONSIBILITY AND INDEMNITY: Used machines, equipment or any part thereof, may not incorporate approved activating mechanisms, operator safety devices or safety guards as required by OSHA or otherwise. It shall be a Purchaser's (Buyer's) responsibility to ensure that any and all merchandise or equipment purchased from Die Cast Machinery, LLC or its affiliates is installed and operated in a proper and safe manner. Purchaser (Buyer) also acknowledges that it may have to install or change guards, safeties, warnings or other components to ensure that the merchandise or machines purchased will conform to all laws, codes, regulations, ordinances, statutes, insurance requirements and industry standards. Purchaser agrees to defend, indemnify and hold harmless Die Cast Machinery, LLC from and against all suits, claims, costs, damages and expenses, including, but not limited to, reasonable attorneys' fees, arising out of, or in connection with, the transportation, purchase, ownership, or use of the merchandise or equipment sold hereunder. Information has been obtained from sources deemed reliable, buyers should avail themselves of the opportunity to inspect the items before purchase.