



Die Cast Machinery, LLC Inventory number ??: 5650

We offer for sale, subject to availability, prior sale and the terms listed below:

Used Buhler Model: Evolution B 84 DV 948 Metric Tons (1,045 US Tons) Horizontal Cold Chamber Aluminum/Magnesium Capable High Pressure Die Casting Machine

Model: Evolution B 84 DV

Fully Automated Cell including: Die Cast Machine, Gerlieva High Speed Linear Sprayer, ABB IRB 6600 Robot Extractor, Weco 35 Ton Trim Press, Striko Westofen W900 SL ProDos XP Aluminum Dosing Furnace and Fondarex VacuPac VP Multi C Vacuum system

Status: Available

Specifications:	Metric / U.S. Standard
Injection Force, Dynamic - Intensified:	290 - 700 kn (29.5 - 71.3 metric tons) / 44.73 - 123.19 tons
Injection Positions:	Center to -300 mm / Center to -13.77 inches
Plunger Diameter (min - max)	70 - 110 mm / 3.25 - 5.00 inches
Plunger Stroke	600 mm / 35.4 inches
Projected area (min - Maximum)	509 - 1,038 cm ² / 78.8 to 160 Square Inches
Ejector Force/Stroke:	225 kN (22.9 metric tons) - 175 mm stroke / 25.29 tons - 6.88 inches
Tie Bar Diameter:	170 mm / 6.69 inches
Maximum Locking Force	8400 kN (856 metric tons) / 944 Tons
Stationary Platen Size (H x V)	1,530 x 1,657 / 65.7 x 65.7 inches
Tie Bar Clearance	900 x 900 mm / 35.4 x 35.4 inches
Die Height (minimum - maximum)	400 - 1,000 mm / 15.74 - 39.37 inches
Die Opening Stroke	800 mm / 31.49 inches

Features & Accessories:

Updated to Buhler DataNet Control System

Twin Cylinder Hydraulic Bumper Plate Ejection

Three (3) Auxiliary Hydraulic Core Circuits, One of Fixed Platen, two (2) on Moving Platen

Floor Mounted Power Operator and Helper Side Safety Doors

Hydraulic Motorized Die Height Adjustment System

Dual Fully Automatic Tie Bar Pulling System with Electronic Tie Bar Strain Gauges

Terms of Sale:

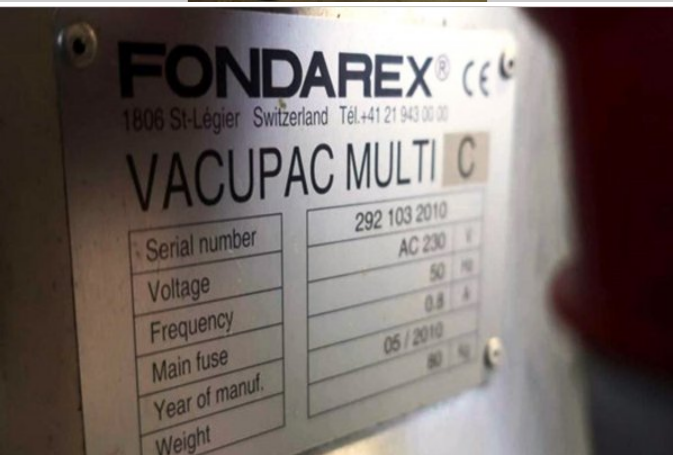
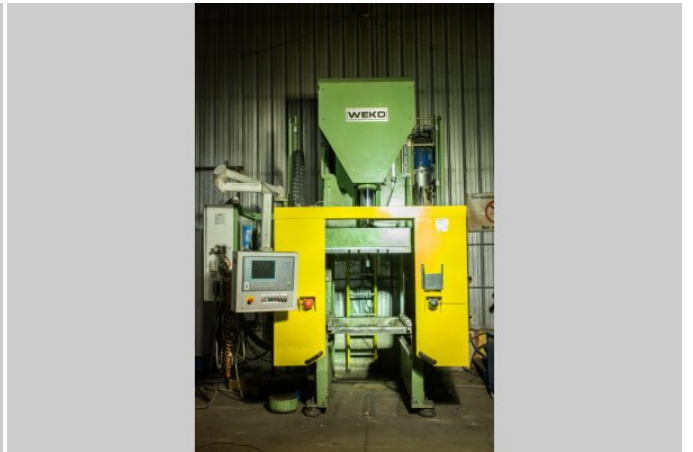
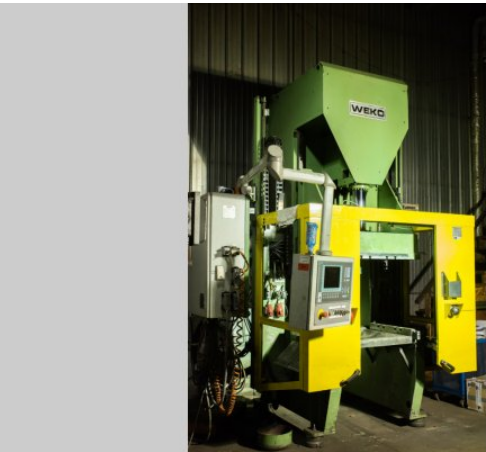
Price: [request quotation](#)

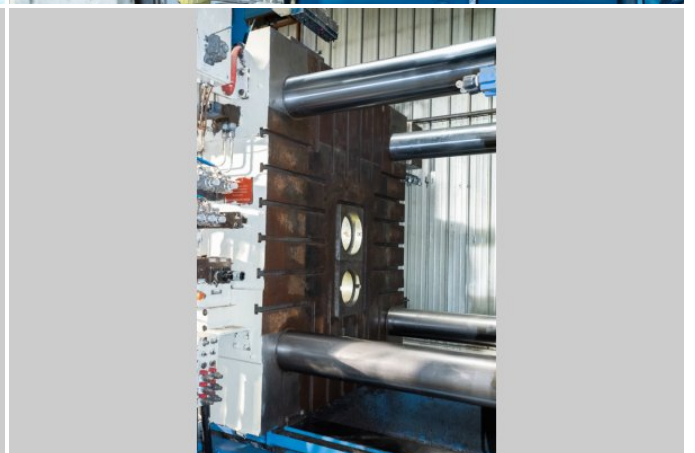
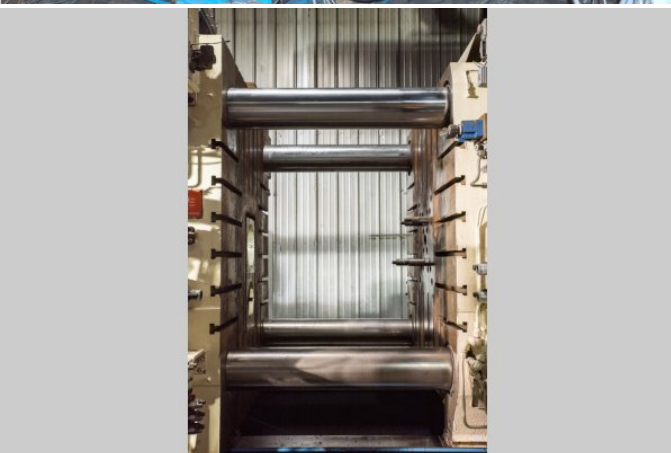
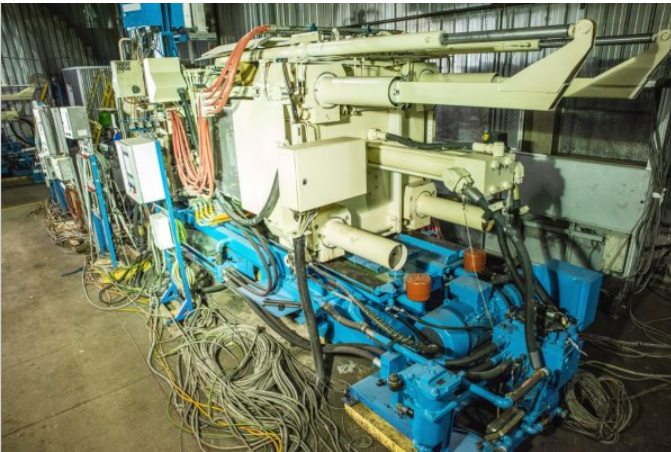
Shipping Terms: Ex-works

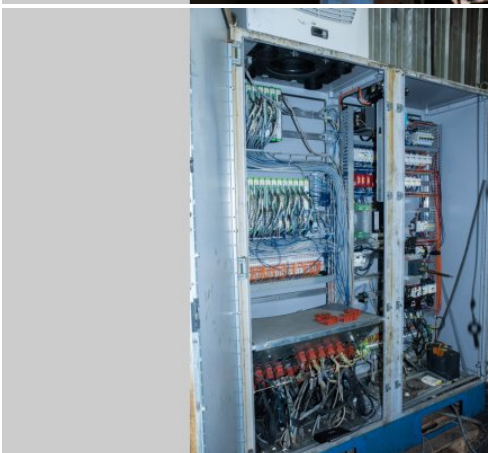
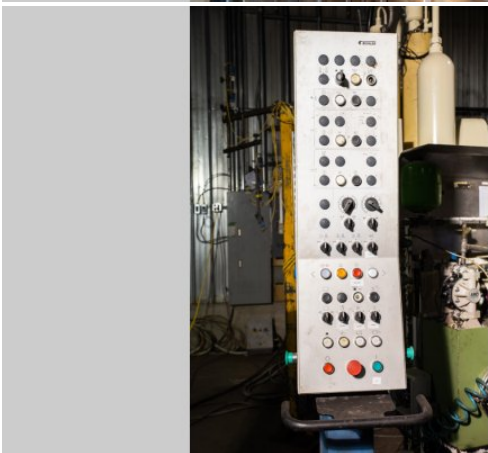
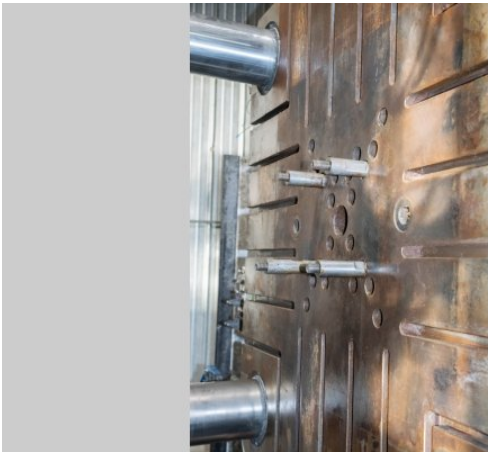
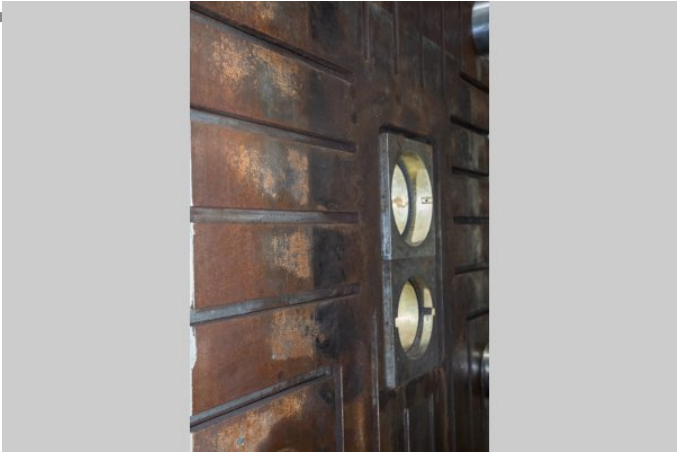
Product Photos:

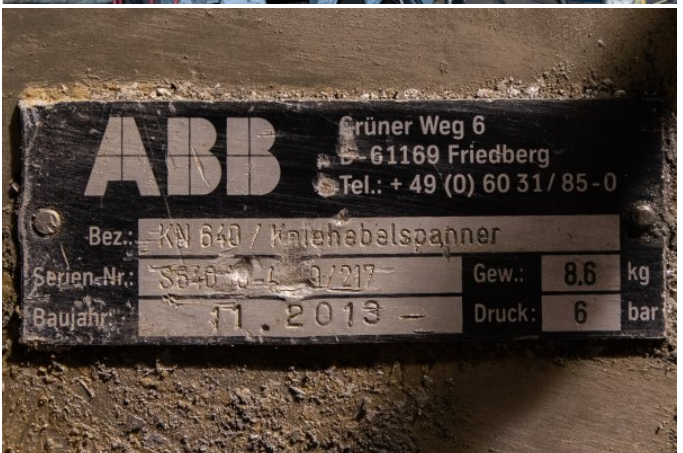
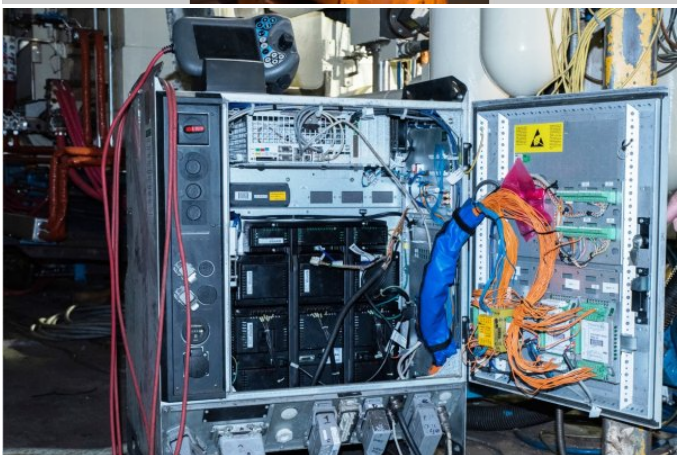
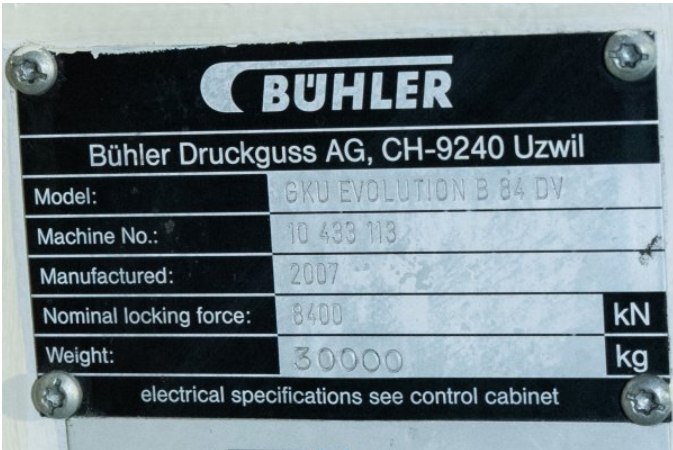
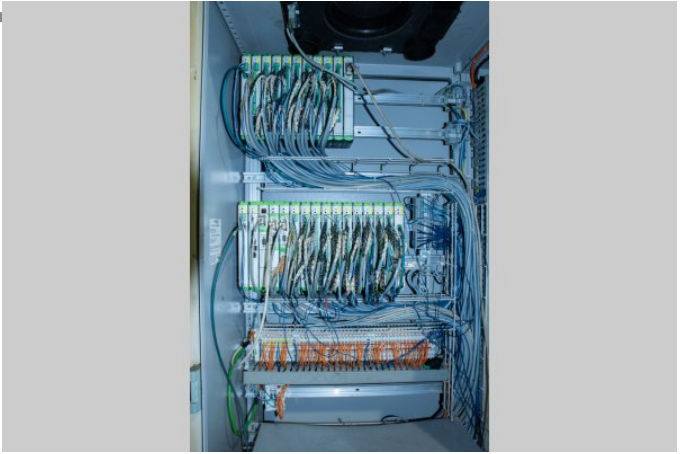
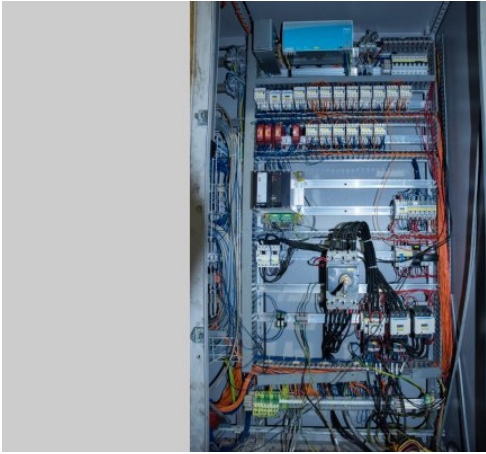
Click on any image for a larger view

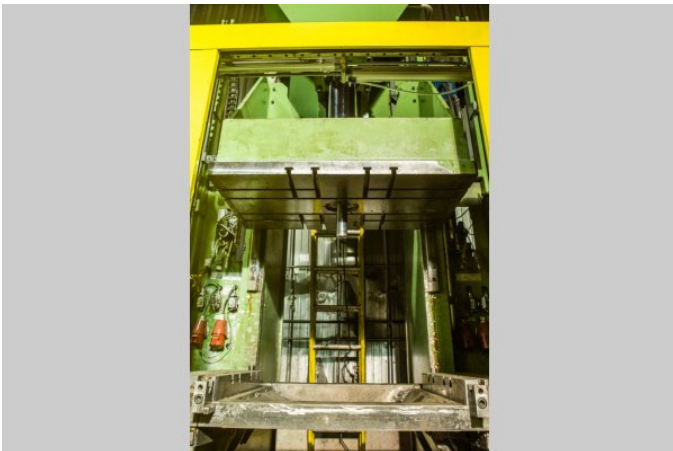
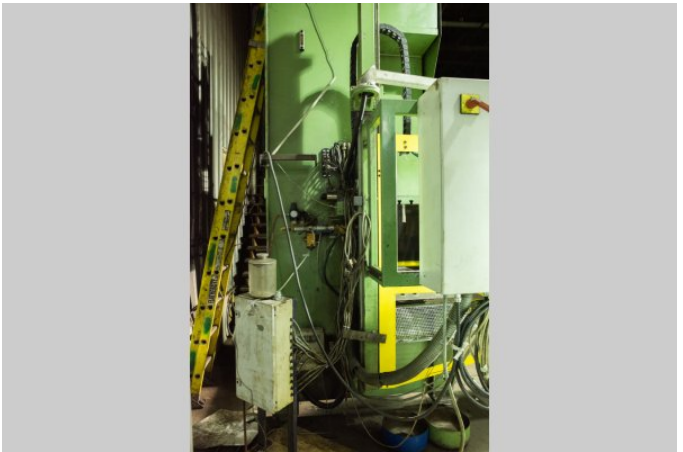
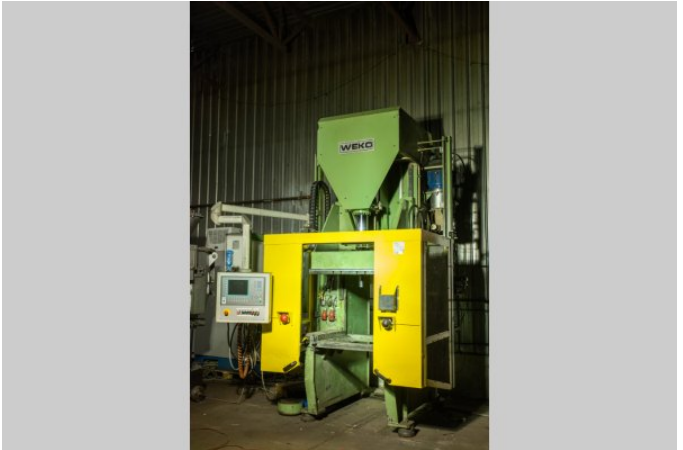














Description: Used, Buhler Model Evolution B 84 DV 948 Metric Tons (1,045 US Tons) Horizontal Cold Chamber Aluminum/Magnesium Capable High Pressure Die Casting Machine For Sale, Features include: **Updated to Buhler DataNet Control System**, Twin Cylinder Hydraulic Bumper Plate Ejection, Three (3) Auxiliary Hydraulic Core Circuits, One of Fixed Platen, two (2) on Moving Platen, Floor Mounted Power Operator and Helper Side Safety Doors, Hydraulic Motorized Die Height Adjustment System, **Dual Fully Automatic Tie Bar Pulling System with Electronic Tie Bar Strain Gauges**, Buhler DataNet Controls, Second Hand, DCM-5650

PURCHASER'S (Buyer's) RESPONSIBILITY AND INDEMNITY: Used machines, equipment or any part thereof, may not incorporate approved activating mechanisms, operator safety devices or safety guards as required by OSHA or otherwise. It shall be a Purchaser's (Buyer's) responsibility to ensure that any and all merchandise or equipment purchased from Die Cast Machinery, LLC or its affiliates is installed and operated in a proper and safe manner. Purchaser (Buyer) also acknowledges that it may have to install or change guards, safeties, warnings or other components to ensure that the merchandise or machines purchased will conform to all laws, codes, regulations, ordinances, statutes, insurance requirements and industry standards. Purchaser agrees to defend, indemnify and hold harmless Die Cast Machinery, LLC from and against all suits, claims, costs, damages and expenses, including, but not limited to, reasonable attorneys' fees, arising out of, or in connection with, the transportation, purchase, ownership, or use of the merchandise or equipment sold hereunder. Information has been obtained from sources deemed reliable, buyers should avail themselves of the opportunity to inspect the items before purchase.