



Die Cast Machinery, LLC Inventory number ??: 5657

We offer for sale, subject to availability, prior sale and the terms listed below:

Used Delta T Systems Model: T1221MS 12 KW Single Zone Portable Hot Oil Process Heater Temperature Control Unit with Cooling Water Circuit

Model: T1221MS

Call us on our Hot Oil Temperature Control Unit Hot Line 7:00 AM to 7:00 PM at 1-847-360-9170 Extension 2

Status: Available

Specifications:	Metric / U.S. Standard
Main Heater Power (Zone #1):	12 KW / 12 KW
Pump Motor Size (Zone #1):	.75 KW / 1 HP
Flow Rate (Zone #1):	38 Liters Per Minute (LPM) / 10 Gallong Per Minute (GPM)
Connection size/type:	1 inch NPT / 1 inch NPT
Maximum Operating Temperature:	288 degrees C / 550 degrees F
Power Requirements @ 15 Amps:	575 volts / 3 phase / 60 cycle / 575 volts / 3 phase / 60 cycle
Dimensions:	457 x 938 x 1188 mm / 18 X 37 X 46 inches
Weight:	/

Features & Accessories:

New - Never Installed - Factory Upgrade to Magnetic Drive Centrifugal (turbine) pump

Easy to Programm and Operate Microprocessor-based PID controller

Manual Oil By-Pass Valve and Piping - allows unit to maintin temperature while process is being switched over
Factory Installed Optional Water-Cooled Tube-In-Shell Heat Exchanger for Process Cooling

Solid State Heating Contactor, Over Temperature Protection

Unit on casters for easy movement

Terms of Sale:

Price: [request quotation](#)

Shipping Terms: F.O.B. Warehouse

Product Photos:

Click on any image for a larger view



**BRAND NEW
NEVER HOOKED UP
NEVER INSTALLED**



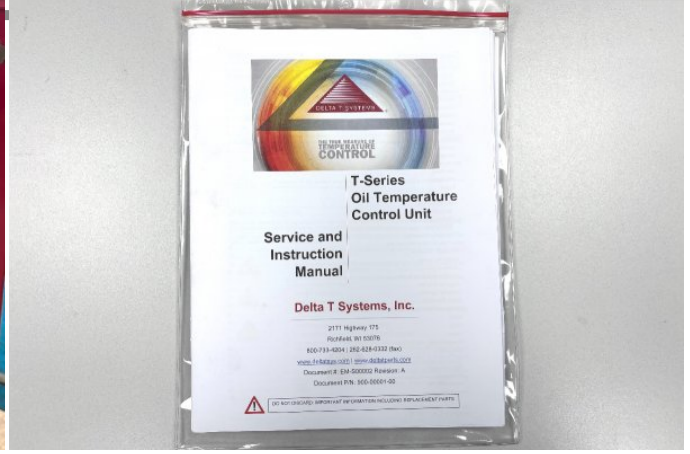
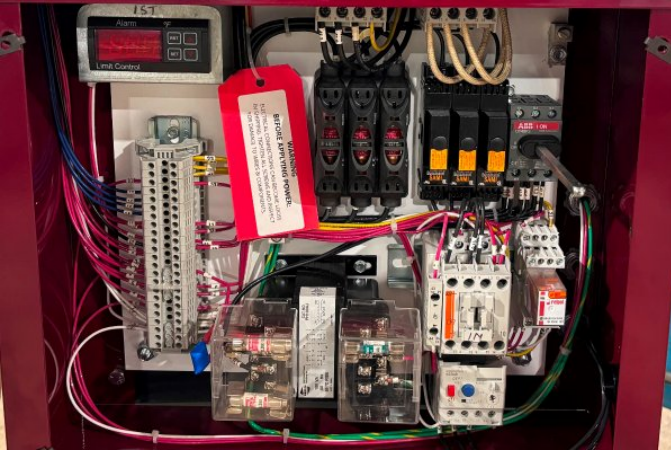


**BRAND NEW
NEVER HOOKED UP
NEVER INSTALLED**



**DIE CAST
MACHINERY
LLC**





Description: Used, Delta T Systems Model T1221MS 12 KW Single Zone Portable Hot Oil Process Heater Temperature Control Unit with Cooling Water Circuit For Sale, Features include: **New - Never Installed - Factory Upgrade to Magnetic Drive Centrifugal (turbine) pump**, Easy to Programm and Operate Microprocessor-based PID controller , Manual Oil By-Pass Valve and Piping - allows unit to maintain temperature while process is being switched over, Factory Installed Optional Water-Cooled Tube-In-Shell Heat Exchanger for Process Cooling, Solid State Heating Contactor, Over Temperature Protection, Unit on casters for easy movement, Microprocessor-based PID Controller Controls, Second Hand, DCM-5657

PURCHASER'S (Buyer's) RESPONSIBILITY AND INDEMNITY: Used machines, equipment or any part thereof, may not incorporate approved activating mechanisms, operator safety devices or safety guards as required by OSHA or otherwise. It shall be a Purchaser's (Buyer's) responsibility to ensure that any and all merchandise or equipment purchased from Die Cast Machinery, LLC or its affiliates is installed and operated in a proper and safe manner. Purchaser (Buyer) also acknowledges that it may have to install or change guards, safeties, warnings or other components to ensure that the merchandise or machines purchased will conform to all laws, codes, regulations, ordinances, statutes, insurance requirements and industry standards. Purchaser agrees to defend, indemnify and hold harmless Die Cast Machinery, LLC from and against all suits, claims, costs, damages and expenses, including, but not limited to, reasonable attorneys' fees, arising out of, or in connection with, the transportation, purchase, ownership, or use of the merchandise or equipment sold hereunder. Information has been obtained from sources deemed reliable, buyers should avail themselves of the opportunity to inspect the items before purchase.