



Die Cast Machinery, LLC Inventory number: 4885

We offer for sale, subject to prior sale and the terms listed below:

Used DME 1215 Inch Standard Duty, Double Unit, Cold Chamber Aluminum master unit die holder

Model: DC-1215-A

Status: Available

Specifications:

Metric / U.S. Standard

Overall Width:	377.825 mm / 14.875 inches
Overall Length:	755.65 mm / 29.750 inches
Overall Height (thickness):	412.75 mm / 16.250 inches
Cover Half Thickness:	158.75 mm / 6.25 inches
Ejector Half Thickness:	254 mm / 10 inches
Insert Size - Cover Side:	301.625 x 377.825 x 98.425 mm / 11.875 x 14.875 x 3.875 inches
Insert Size - Ejector Side:	301.625 x 377.825 x 98.425 mm / 11.875 x 14.875 x 3.875 inches
Approximate Weight:	425 kg / 935 pounds

Features & Accessories:

Quick Die Change
Standard Duty Design
Cold Chamber Configuration

Terms of Sale:

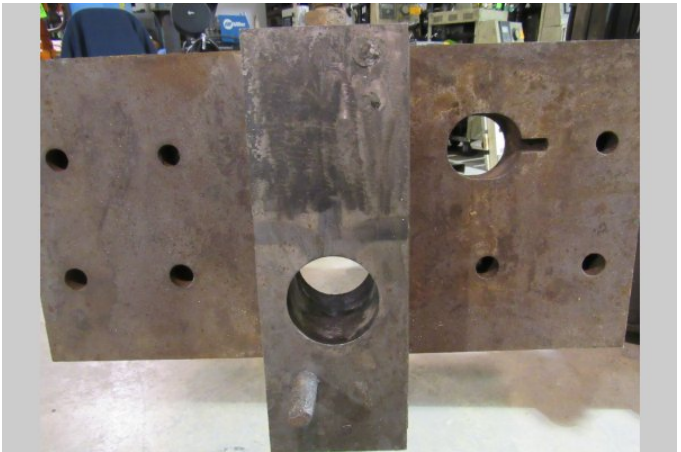
Price: [request quotation](#)

Shipping Terms: F.O.B. Warehouse

Product Photos:

Click on any image for a larger view





Description: Used, DME Model DC-1215-A 1215 Inch Standard Duty, Double Unit, Cold Chamber Aluminum master unit die holder For Sale, Features include: Quick Die Change, Standard Duty Design, Cold Chamber Configuration, , , , Controls, Second Hand, DCM-4885

PURCHASER'S (Buyer's) RESPONSIBILITY AND INDEMNITY: Used machines, equipment or any part thereof, may not incorporate approved activating mechanisms, operator safety devices or safety guards as required by OSHA or otherwise. It shall be a Purchaser's (Buyer's) responsibility to ensure that any and all merchandise or equipment purchased from Die Cast Machinery, LLC or its affiliates is installed and operated in a proper and safe manner. Purchaser (Buyer) also acknowledges that it may have to install or change guards, safeties, warnings or other components to ensure that the merchandise or machines purchased will conform to all laws, codes, regulations, ordinances, statutes, insurance requirements and industry standards. Purchaser agrees to defend, indemnify and hold harmless Die Cast Machinery, LLC from and against all suits, claims, costs, damages and expenses, including, but not limited to, reasonable attorneys' fees, arising out of, or in connection with, the transportation, purchase, ownership, or use of the merchandise or equipment sold hereunder. Information has been obtained from sources deemed reliable, buyers should avail themselves of the opportunity to inspect the items before purchase.