



Die Cast Machinery, LLC Inventory number ??: 5081

We offer for sale, subject to availability, prior sale and the terms listed below:

Used Ex-Cell-O B&T 1600 Ton Horizontal Cold Chamber Aluminum High Pressure Die Casting Machine

Model: DC-1600

Updated in 2015 with Die Cast Press Shot End with Visi-Trak Sure-Trak 2 Shot Control System with full Servo Shot Control

Status: Sold

Specifications:

Metric / U.S. Standard

Factory Rated Tonnage:	1454 / 1600
Tie Bar Diameter:	279.4 mm / 11 inches
Clearance Between Tie bars:	1295.4 mm / 51 inches
Front Platen Size (T x W x H):	508 x 2108.2 x 2438.4 mm / 21 x 84 x 98 inches
Moving Platen Size (T x W x H):	482.25 x 2108.2 x 2108.2 mm / 20 x 84 x 84 inches
Die Thickness (min. - max.):	762 - 1574.8 mm / 30 - 62 inches
Die Stroke (adjustable):	685 - 863 mm / 27 - 34 inches
Ejection Stroke:	254 mm / 10 inches
Motor Size	93.25 kw / 125 hp
Machine Size (L x W x H)	12.1 x 3.3 x 3.6 m / 40 x 11 x 12 feet
Machine Weight	118 MT / 260,000 pounds

Features & Accessories:

Allen Bradley SLC 5/03 Solid State Controls

Twin Cylinder Hydraulic Bumper Plate Ejection System with Pull-Back

Three (3) Core Circuits on Moving Platen and One (1) Core Circuit on Front Platen

Inserted Shot Position (Shot Block) with Center to -15 below center shot positions

Air Safety Ratchet Device, Automatic Lubrication System, Motorized Die Height Adjustment System

Power Operator Side and Power Helper Side Doors

Optional Equipment Available with Machine at additional cost: (click on item to view)

[B&T 1600 Ton High Pressure Cold Chamber Die Cast Machine](#)

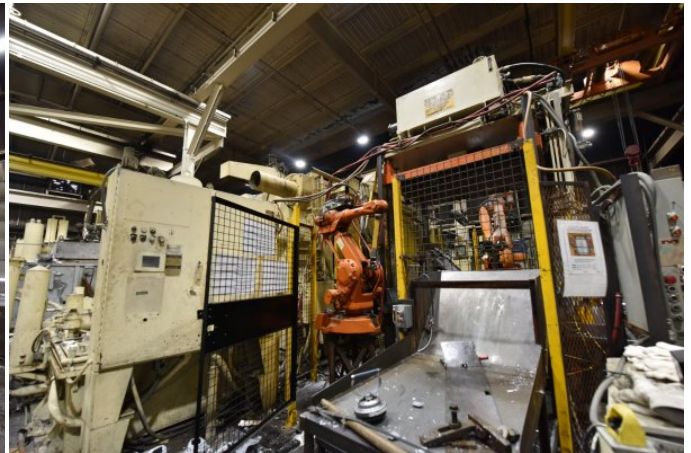
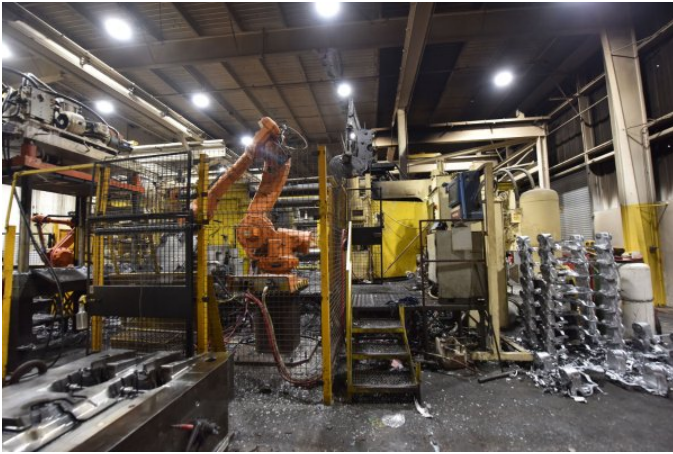
Terms of Sale:

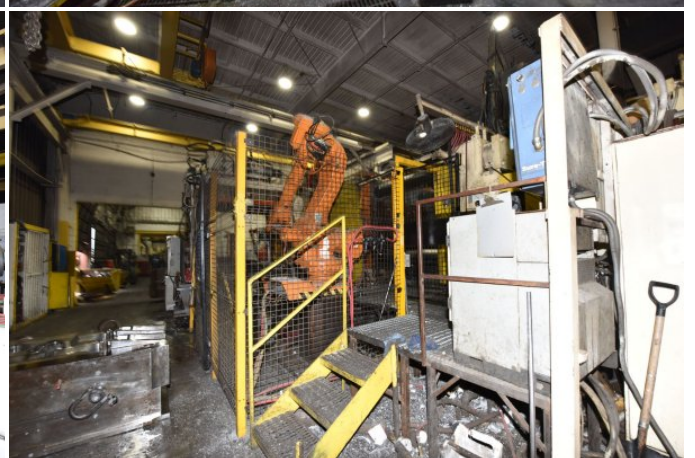
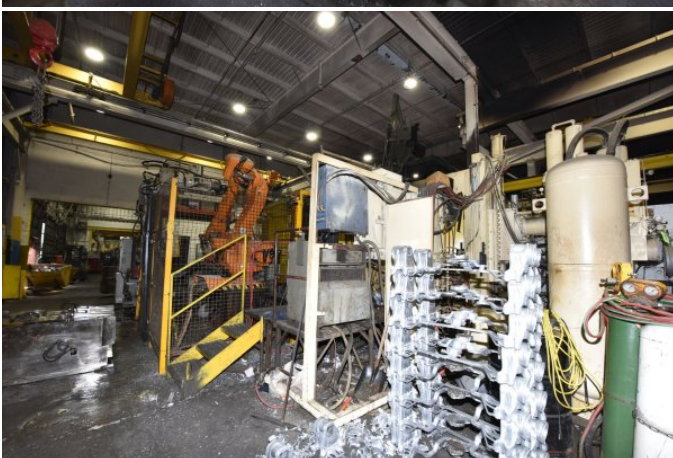
Price: [request quotation](#)

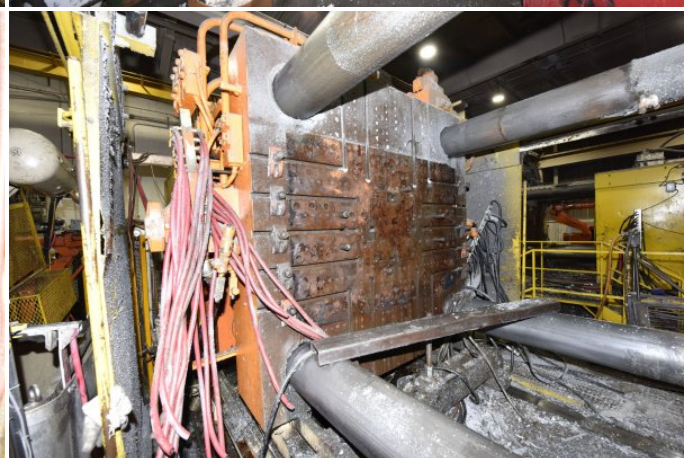
Shipping Terms: Ex-works

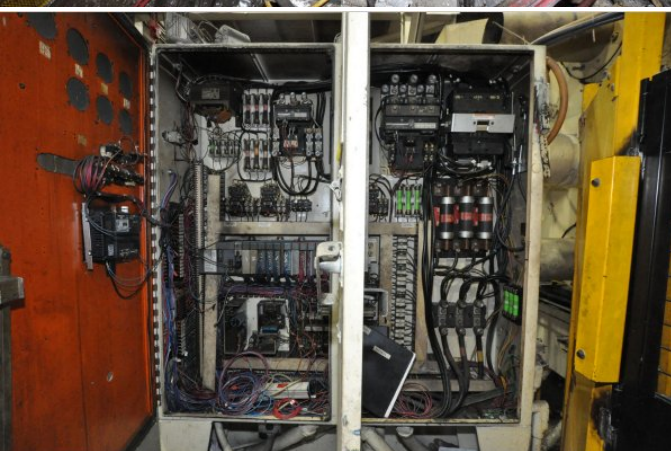
Product Photos:

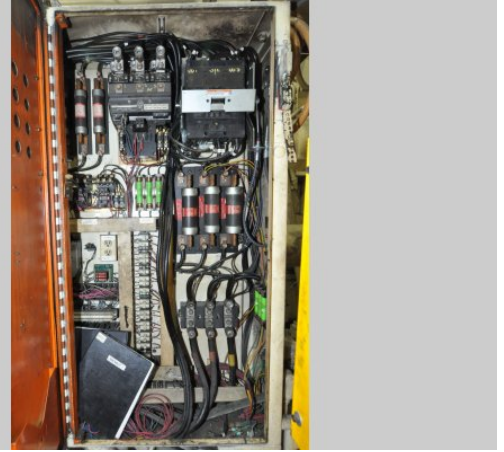
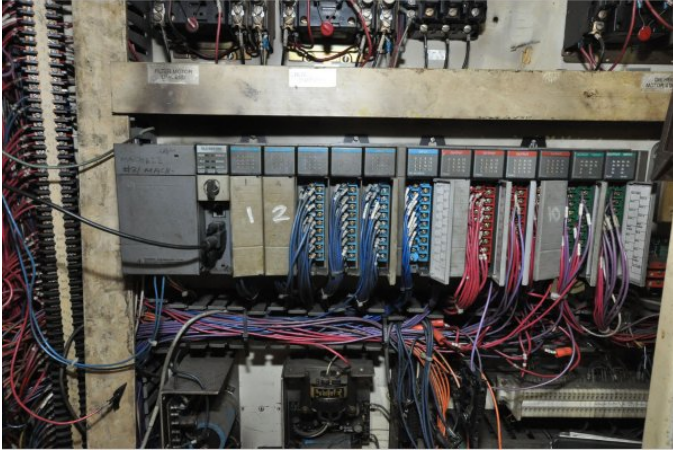
Click on any image for a larger view











Description: Used, Ex-Cell-O B&T Model DC-1600 1600 Ton Horizontal Cold Chamber Aluminum High Pressure Die Casting Machine For Sale, Features include: Allen Bradley SLC 5/03 Solid State Controls, Twin Cylinder Hydraulic Bumper Plate Ejection System with Pull-Back, Three (3) Core Circuits on Moving Platen and One (1) Core Circuit on Front Platen, Inserted Shot Position (Shot Block) with Center to -15 below center shot positions, Air Safety Ratchet Device, Automatic Lubrication System, Motorized Die Height Adjustment System, Power Operator Side and Power Helper Side Doors, Allen Bradley SLC 5/03 Controls with Visi-Trak Sure-Trak 2 Shot Control System Controls, Second Hand, DCM-5081

PURCHASER'S (Buyer's) RESPONSIBILITY AND INDEMNITY: Used machines, equipment or any part thereof, may not incorporate approved activating mechanisms, operator safety devices or safety guards as required by OSHA or otherwise. It shall be a Purchaser's (Buyer's) responsibility to ensure that any and all merchandise or equipment purchased from Die Cast Machinery, LLC or its affiliates is installed and operated in a proper and safe manner. Purchaser (Buyer) also acknowledges that it may have to install or change guards, safeties, warnings or other components to ensure that the merchandise or machines purchased will conform to all laws, codes, regulations, ordinances, statutes, insurance requirements and industry standards. Purchaser agrees to defend, indemnify and hold harmless Die Cast Machinery, LLC from and against all suits, claims, costs, damages and expenses, including, but not limited to, reasonable attorneys' fees, arising out of, or in connection with, the transportation, purchase, ownership, or use of the merchandise or equipment sold hereunder. Information has been obtained from sources deemed reliable, buyers should avail themselves of the opportunity to inspect the items before purchase.