

DIE CAST MACHINERY LLC

3246 West Monroe Street
Waukegan, IL 60085-3029 USA
1-847-360-9170 Phone
www.diecastmachinery.com

Die Cast Machinery, LLC Inventory number DCM: 5642

We offer for sale, subject to availability, prior sale and the terms listed below:

Used Ex-Cell-O B&T Model: DC850 850 Ton Horizontal Cold Chamber Aluminum/Magnesium Capable High Pressure Die Casting Machine

Model: DC850

Status: Available

Specifications:

Metric / U.S. Standard

Locking Force:	850 tons / 850 tons
Tie Bar Diameter:	228 mm / 9 inches
Clearance Between Tie Bars:	1143 x 1143 mm / 45 x 45 inches
Die Thickness (minimum - maximum):	609 - 1270 mm / 24 - 50 inches
Die Stroke (minimum - maximum):	609 - 762 mm / 24 - 30 inches
Moving Platen Size:	1752 x 1752 mm / 69 x 69 inches
Shot Positions (removable Insert):	Center, -228.6, -304.8 mm / Center, -9, -12 below center
Injection Cylinder Stroke:	812 - 965 mm / 32 - 38 inches
Ejector Stroke & Force:	127 mm & 29 tons / 5 inches & 31.9 tons
Main Motor Power:	56 kw / 75 HP
Machine Size:	10.97 x 3.15 x 3.81 meters / 36 x 10.3 x 12.5 feet
Machine Weight:	72,727 kg / 160,000 pounds

Features & Accessories:

Top Operator Side Automatic Tie Bar Puller System
Hydraulic Powered Motorized Die Height Adjustment
Hydraulic Bumper Plate Ejection System
Trabon Automatic Lubrication System
Auxiliary Hydraulic Side Core Circuits

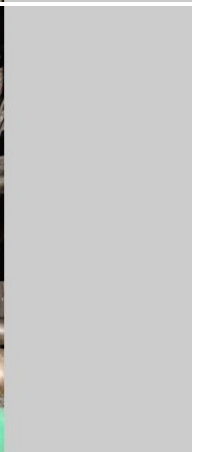
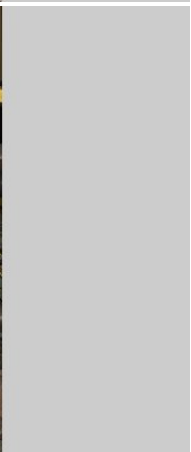
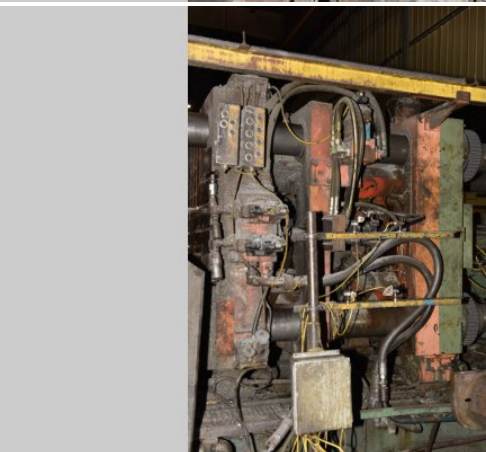
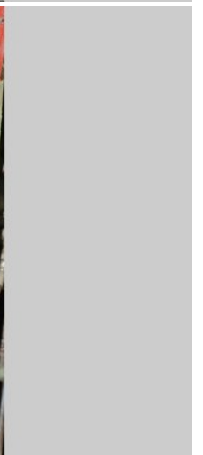
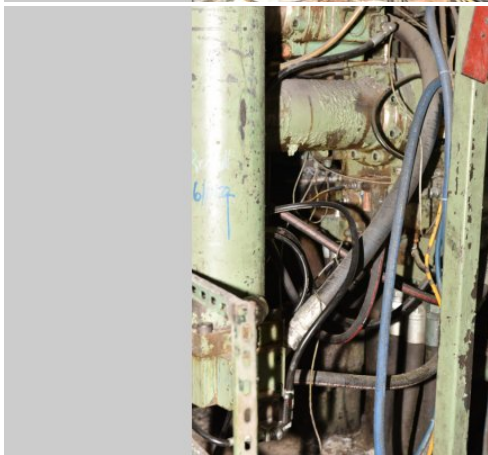
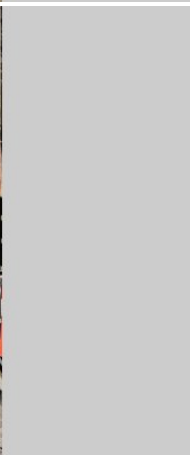
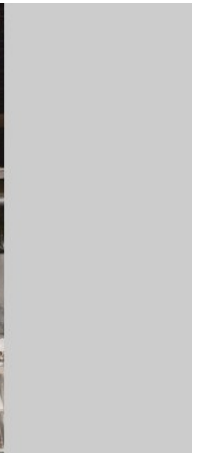
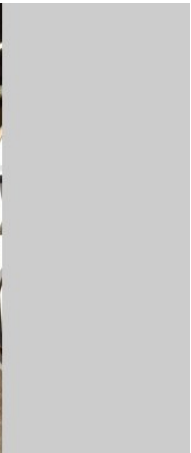
Terms of Sale:

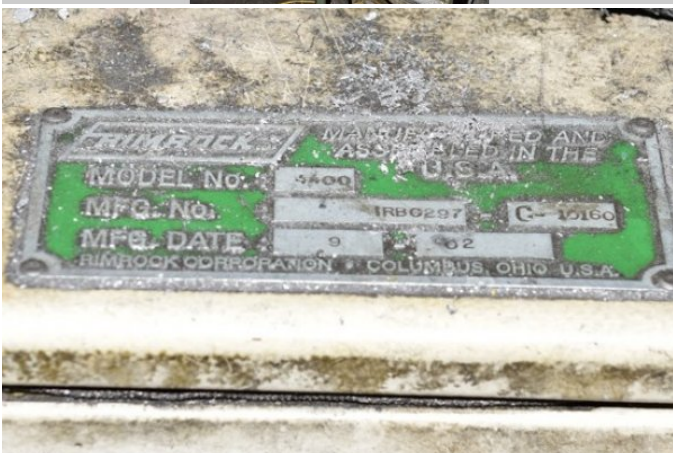
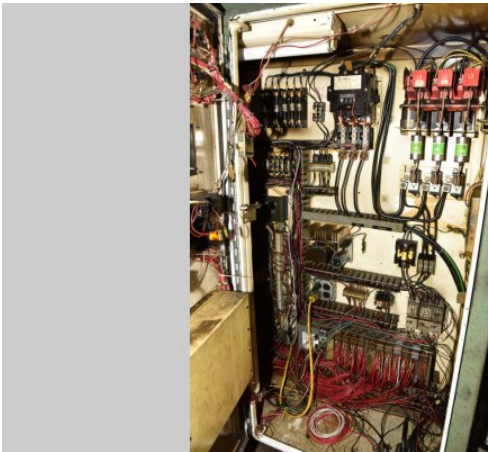
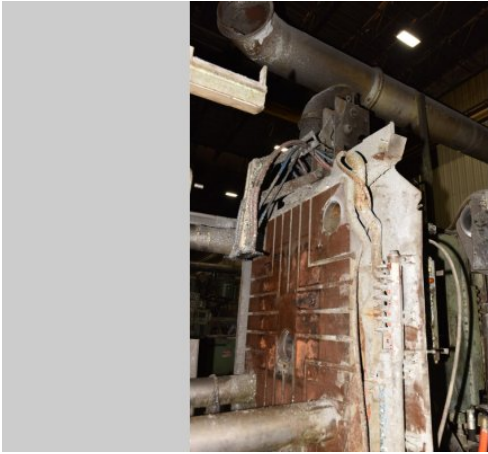
Price: [request quotation](#)

Shipping Terms: Ex-works

Product Photos:

Click on any image for a larger view





Description: Used, Ex-Cell-O B&T Model DC850 850 Ton Horizontal Cold Chamber Aluminum/Magnesium Capable High Pressure Die Casting Machine For Sale, Features include: Top Operator Side Automatic Tie Bar Puller System, Hydraulic Powered Motorized Die Height Adjustment, Hydraulic Bumper Plate Ejection System, Trabon Automatic Lubrication System, Auxiliary Hydraulic Side Core Circuits, , Allen Bradley SLC 5/04 Controls, Second Hand, DCM-5642

PURCHASER'S (Buyer's) RESPONSIBILITY AND INDEMNITY: Used machines, equipment or any part thereof, may not incorporate approved activating mechanisms, operator safety devices or safety guards as required by OSHA or otherwise. It shall be a Purchaser's (Buyer's) responsibility to ensure that any and all merchandise or equipment purchased from Die Cast Machinery, LLC or its affiliates is installed and operated in a proper and safe manner. Purchaser (Buyer) also acknowledges that it may have to install or change guards, safeties, warnings or other components to ensure that the merchandise or machines purchased will conform to all laws, codes, regulations, ordinances, statutes, insurance requirements and industry standards. Purchaser agrees to defend, indemnify and hold harmless Die Cast Machinery, LLC from and against all suits, claims, costs, damages and expenses, including, but not limited to, reasonable attorneys' fees, arising out of, or in connection with, the transportation, purchase, ownership, or use of the merchandise or equipment sold hereunder. Information has been obtained from sources deemed reliable, buyers should avail themselves of the opportunity to inspect the items before purchase.