



DIE CAST MACHINERY LLC

3246 West Monroe Street
Waukegan, IL 60085-3029 USA
1-847-360-9170 Phone
www.diecastmachinery.com

Die Cast Machinery, LLC Inventory number ??: 5551

We offer for sale, subject to availability, prior sale and the terms listed below:

Used Fondarex Model: SuperVac Medio 200 - 1200 Ton Vacuum Valve for Processing Die Casting

Model: SuperVac Medio

Status: Available

Specifications:

Metric / U.S. Standard

For Die casting machine tonnage:	181.4 - 1088.6 Metric Ton / 200 - 1200 Ton
Shot weight AL:	1 -12 kg / 2.2 - 26.4 lbs
Shot weight Mg:	0.7 - 8 kg / 1.5 - 77.2 lbs
Shot weight Zn:	3 - 20 kg / 7 - 44.1 lbs
Valve Dimensions (depth x width x height):	88.9 x 100 x 127 mm / 3.5 x 3.9 x 5 inches
Compensator Dimensions (depth x width x height):	88.9 x 100 x 126 mm / 3.5 x 3.9 x 4.9 inches
Valve and Compensator Weight:	18 kg / 40 lbs

Terms of Sale:

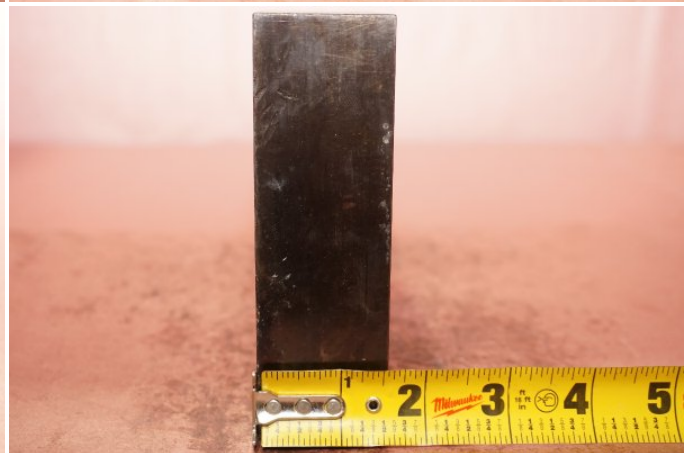
Price: [request quotation](#)

Shipping Terms: F.O.B. Warehouse

Product Photos:

Click on any image for a larger view





Description: Used, Fondarex Model SuperVac Medio 200 - 1200 Ton Vacuum Valve for Processing Die Casting For Sale, Features include: , , , , , Fondarex Controls, Second Hand, DCM-5551

PURCHASER'S (Buyer's) RESPONSIBILITY AND INDEMNITY: Used machines, equipment or any part thereof, may not incorporate approved activating mechanisms, operator safety devices or safety guards as required by OSHA or otherwise. It shall be a Purchaser's (Buyer's) responsibility to ensure that any and all merchandise or equipment purchased from Die Cast Machinery, LLC or its affiliates is installed and operated in a proper and safe manner. Purchaser (Buyer) also acknowledges that it may have to install or change guards, safeties, warnings or other components to ensure that the merchandise or machines purchased will conform to all laws, codes, regulations, ordinances, statutes, insurance requirements and industry standards. Purchaser agrees to defend, indemnify and hold harmless Die Cast Machinery, LLC from and against all suits, claims, costs, damages and expenses, including, but not limited to, reasonable attorneys' fees, arising out of, or in connection with, the transportation, purchase, ownership, or use of the merchandise or equipment sold hereunder. Information has been obtained from sources deemed reliable, buyers should avail themselves of the opportunity to inspect the items before purchase.