



Die Cast Machinery, LLC Inventory number: 4960

We offer for sale, subject to prior sale and the terms listed below:

Used Frech 592 Metric Ton Horizontal Cold Chamber Aluminum High Pressure Die Casting Machine

Model: DAK 500 H

Die Cast Machine #20

**Status: Sold**

## **Specifications:**

## **Metric / U.S. Standard**

Clamping Force:	592 Metric Tons (5,800 kN) / 652 ton
Die Thickness (minimum - maximum):	350 - 800 / 13.77 - 31.49 inches
Platen Dimensions (horizontal x vertical):	1120 x 1170 mm / 44 x 46 inches
Clearance between tie bars:	700 x 700 mm / 27.56 x 27.56 inches
Tie Bar Diameter:	139.95 mm / 5.51 inches
Closing Stroke:	680 mm / 26.77 inches
Injection Positions (inserted)	0, -70, -140, -210 / 0, -2.75, -5.50, -8-26
Injection Force:	898 kN / 100.4 tons
Recommended Injection Plunger Diameter Range:	60 - 110 mm / 2.36 - 4.3 inches
Casting Volume Range:	1101 - 3,700 Cubic Centimeters / 67 - 225 Cubic Inches
Ejector Force:	285 kN / 31.35 tons
Ejector Stroke:	160 mm / 6.3 inches

## **Features & Accessories:**

Electric Motorized Die Height Adjustment  
Hydraulic Bumper Plate Ejection  
Inserted Shot Positions (allows for multiple differ shot positions by moving the shot block)  
Retrofitted to Allen Bradley PLC Controls  
Two (2) Auxiliary Hydraulic Side Core Circuits on Moving Platen

## **Optional Equipment Available with Machine at additional cost: (click on item to view)**

[Rimrock 305 Multi-Link Automatic Ladle](#)

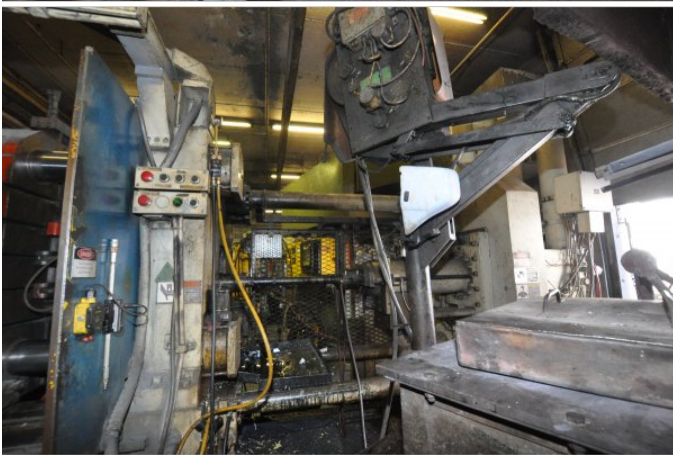
## **Terms of Sale:**

Price: [request quotation](#)

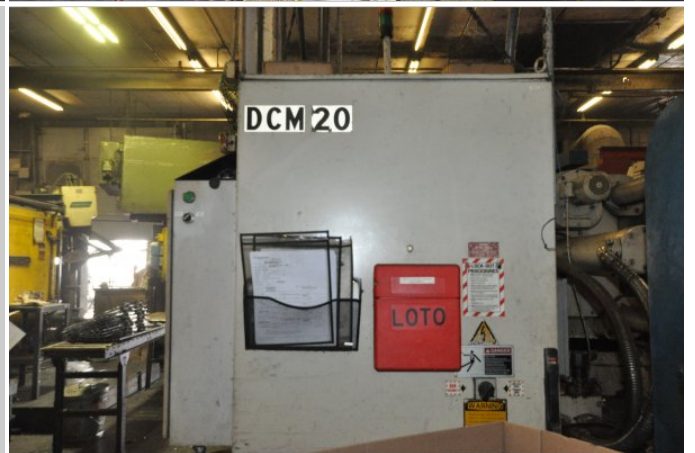
Shipping Terms: Ex-site

**Product Photos:**

*Click on any image for a larger view*







**Description:** Used, Frech Model DAK 500 H 592 Metric Ton Horizontal Cold Chamber Aluminum High Pressure Die Casting Machine For Sale, Features include: Electric Motorized Die Height Adjustment , Hydraulic Bumper Plate Ejection, Inserted Shot Positions (allows for multiple differ shot positions by moving the shot block, Retrofitted to Allen Bradley PLC Controls, Two (2) Auxiliary Hydraulic Side Core Circuits on Moving Platen, , Allen Bradley PLC Solid State Controls, Second Hand, DCM-4960

**PURCHASER'S (Buyer's) RESPONSIBILITY AND INDEMNITY:** Used machines, equipment or any part thereof, may not incorporate approved activating mechanisms, operator safety devices or safety guards as required by OSHA or otherwise. It shall be a Purchaser's (Buyer's) responsibility to ensure that any and all merchandise or equipment purchased from Die Cast Machinery, LLC or its affiliates is installed and operated in a proper and safe manner. Purchaser (Buyer) also acknowledges that it may have to install or change guards, safeties, warnings or other components to ensure that the merchandise or machines purchased will conform to all laws, codes, regulations, ordinances, statutes, insurance requirements and industry standards. Purchaser agrees to defend, indemnify and hold harmless Die Cast Machinery, LLC from and against all suits, claims, costs, damages and expenses, including, but not limited to, reasonable attorneys' fees, arising out of, or in connection with, the transportation, purchase, ownership, or use of the merchandise or equipment sold hereunder. Information has been obtained from sources deemed reliable, buyers should avail themselves of the opportunity to inspect the items before purchase.