



Die Cast Machinery, LLC Inventory number ??: 5433

We offer for sale, subject to availability, prior sale and the terms listed below:

Used Gibson Model: 48x84-SH 48 x 84 inch Indexing Two Chamber Spinner Hanger Abrasive Shot Blast & Peening Machine

Model: 48x84-SH

New in 2014 - Removed from Service in 2017 - Very Low Hour Machine

Status: Sold

Specifications:

Metric / U.S. Standard

Number of Blast Wheels & Power:	Four (4) @ 7.5 kw each / Four (4) @ 10 HP each
Number of Blast Chambers:	2 (two) 180 degree indexing / 2 (two) 180 degree indexing
Blast Wheel Slinger RPM:	Four (4) @ 3,450 RPM / Four (4) @ 3,450 RPM
Workload Capacity (Hangers):	681.8 KG / 1,500 pounds
Hanger Rotational Speed:	10.4 RPM / 10.4 RPM
Work Envelope max (optimal):	1219 x 2133 mm (914 x 1524) / 48 x 84 (36 x 60 inches)
Chamber Indexing Speed:	3.6 RPM / 3.6 RPM
Required Ventilation:	190 CMM (cubic meters/minute) / 6,700 CFM
Electrical Requirements w/o Dust Collector:	67 amps @ 480/3/60 (56 kw) / 67 amps @ 480/3/60
Abrasive Charge Required:	4,082 KG / 9,000 pounds
Machine Dimensions (width x depth x height):	5,537 x 3,861 x 5,511 mm / 218 x 152 x 217 inches
Machine Weight:	11,113 KG / 24,500 pounds

Features & Accessories:

- Four (4) Blast Wheels allow for optimal blast pattern and production rate
- Two Chamber Design Allows for unlading & loading while machine is blasting is second chamber increasing productivity
- Manganese Steel Wear-Plates in Blast Chambers
- High Hook Weight Capacity
- Adjustable Abrasive Valve/Flow Rates to optimize Finish
- Spinner-Hanger Design Allows for 360 Degree Blasting of Parts

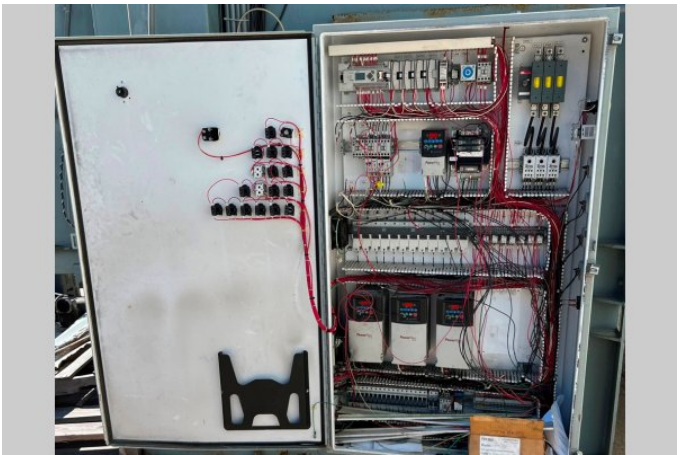
Terms of Sale:

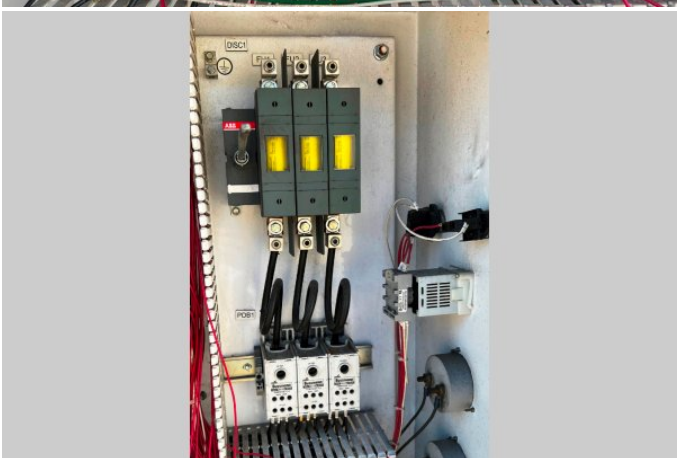
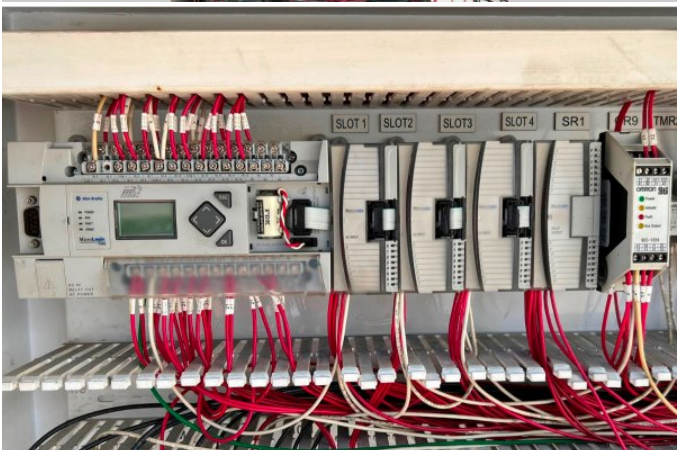
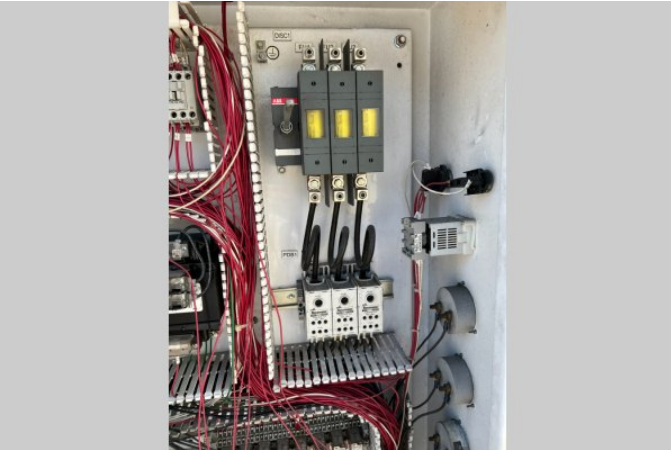
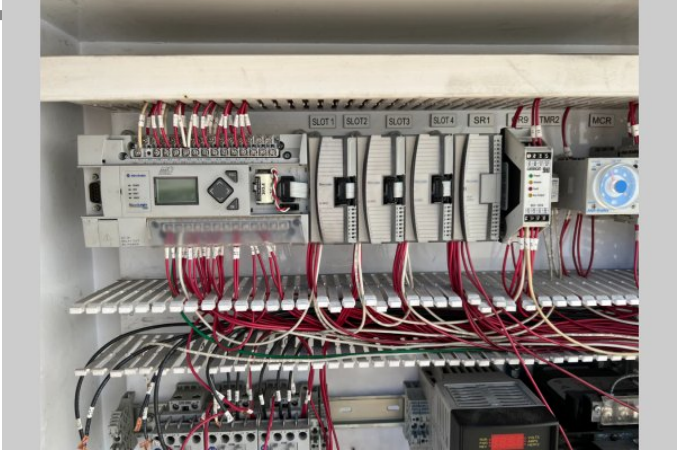
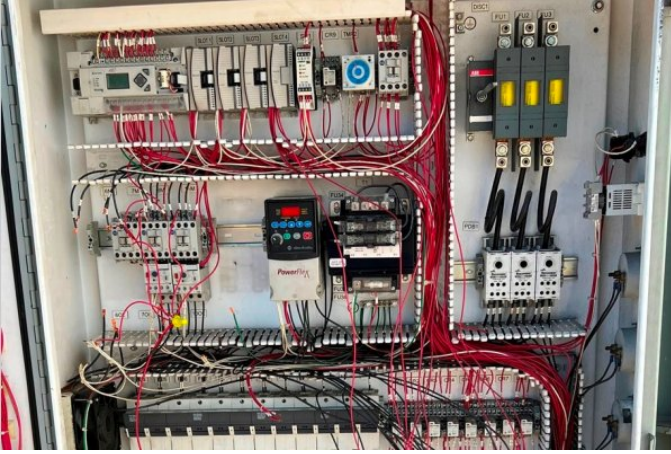
Price: [request quotation](#)

Shipping Terms: Ex-works

Product Photos:

Click on any image for a larger view





Description: Used, Gibson Model 48x84-SH 48 x 84 inch Indexing Two Chamber Spinner Hanger Abrasive Shot Blast & Peening Machine For Sale, Features include: Four (4) Blast Wheels allow for optimal blast pattern and production rate, Two Chamber Design Allows for unlading & loading while machine is blasting is second chamber increasing productivity, Manganese Steel Wear-Plates in Blast Chambers, High Hook Weight Capacity, Adjustable Abrasive Valve/Flow Rates to optimize Finish , Spinner-Hanger Design Allows for 360 Degree Blasting of Parts, Gibson Controls, Second Hand, DCM-5433

PURCHASER'S (Buyer's) RESPONSIBILITY AND INDEMNITY: Used machines, equipment or any part thereof, may not incorporate approved activating mechanisms, operator safety devices or safety guards as required by OSHA or otherwise. It shall be a Purchaser's (Buyer's) responsibility to ensure that any and all merchandise or equipment purchased from Die Cast Machinery, LLC or its affiliates is installed and operated in a proper and safe manner. Purchaser (Buyer) also acknowledges that it may have to install or change guards, safeties, warnings or other components to ensure that the merchandise or machines purchased will conform to all laws, codes, regulations, ordinances, statutes, insurance requirements and industry standards. Purchaser agrees to defend, indemnify and hold harmless Die Cast Machinery, LLC from and against all suits, claims, costs, damages and expenses, including, but not limited to, reasonable attorneys' fees, arising out of, or in connection with, the transportation, purchase, ownership, or use of the merchandise or equipment sold hereunder. Information has been obtained from sources deemed reliable, buyers should avail themselves of the opportunity to inspect the items before purchase.