



Die Cast Machinery, LLC Inventory number ??: 4092

We offer for sale, subject to availability, prior sale and the terms listed below:

Used HEAT Heat Exchange And Transfer 12 kW Single Zone Portable Hot Oil Process Heater Temperature Control Unit

Model: KM550C-12-483

Watlow 988 PID Digital Temperature Controller

**Status: Sold**

### **Specifications:**

### **Metric / U.S. Standard**

Main Heater Power (Zone #1):	12 KW / 12 KW
Pump Motor Size (Zone #1):	2.23 kW / 3 HP
Maximum Operating Temperature:	232 degrees C / 450 degrees F
Flow Rate (Zone #1):	113 liters per minute / 35 gallons per minute
Connection size/type:	25 mm NPT / 1 inch NPT
Overall Size (L x W x H):	110 x 737 x 1,930 mm / 43 x 29 x 76 inches
Power Requirement @ 20 amp	480 Volt / 3 phase / 60 cycle / 480 Volt / 3 phase / 60 cycle

### **Features & Accessories:**

Displays for Process Temperature, Return Temperature and Temperature Difference

Equipped with Load Controls Inc. Model PMP-25 Digital Load Monitor for monitoring load on Process Pump Motor

Equipped with Optional Motorized Bi-Pass Valve on Process Oil - Allows for Unit to Run Continuously when changing process connection - Faster Heat Ups

Alarms for low fluid pressure, pump rotation, over temperature

Set points for Process, High Alarm, Low Alarm

### **Terms of Sale:**

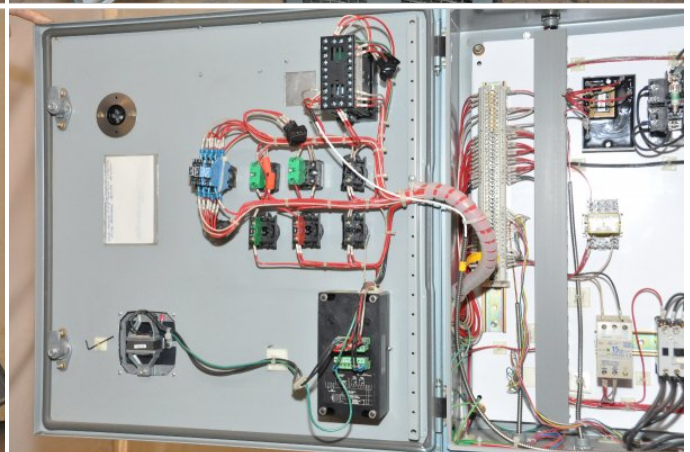
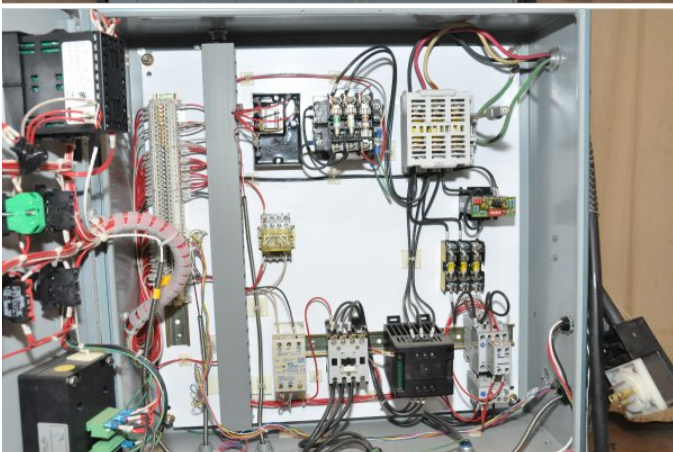
Price: [request quotation](#)

Shipping Terms: F.O.B. Warehouse

**Product Photos:**

*Click on any image for a larger view*





**Description:** Used, HEAT Heat Exchange And Transfer Model KM550C-12-483 12 kW Single Zone Portable Hot Oil Process Heater Temperature Control Unit For Sale, Features include: Displays for Process Temperature, Return Temperature and Temperature Difference , Equipped with Load Controls Inc. Model PMP-25 Digital Load Monitor for monitoring load on Process Pump Motor, Equipped with Optional Motorized Bi-Pass Valve on Process Oil - Allows for Unit to Run Continuously when changing process connection - Faster Heat Ups, Alarms for low fluid pressure, pump rotation, over temperature, Set points for Process, High Alarm, Low Alarm, , Watlow 988 PID Digital Temperature Controller Controls, Second Hand, DCM-4092

**PURCHASER'S (Buyer's) RESPONSIBILITY AND INDEMNITY:** Used machines, equipment or any part thereof, may not incorporate approved activating mechanisms, operator safety devices or safety guards as required by OSHA or otherwise. It shall be a Purchaser's (Buyer's) responsibility to ensure that any and all merchandise or equipment purchased from Die Cast Machinery, LLC or its affiliates is installed and operated in a proper and safe manner. Purchaser (Buyer) also acknowledges that it may have to install or change guards, safeties, warnings or other components to ensure that the merchandise or machines purchased will conform to all laws, codes, regulations, ordinances, statutes, insurance requirements and industry standards. Purchaser agrees to defend, indemnify and hold harmless Die Cast Machinery, LLC from and against all suits, claims, costs, damages and expenses, including, but not limited to, reasonable attorneys' fees, arising out of, or in connection with, the transportation, purchase, ownership, or use of the merchandise or equipment sold hereunder. Information has been obtained from sources deemed reliable, buyers should avail themselves of the opportunity to inspect the items before purchase.