



Die Cast Machinery, LLC Inventory number ??: 5187

We offer for sale, subject to availability, prior sale and the terms listed below:

Used HPM Model: II-400-A 400 U.S. Tons Horizontal Cold Chamber Aluminum High Pressure Die Casting Machine

Model: II-400-A

Machine Purchase Includes Rimrock 305 automatic lade, Rimrock 410 Die Sprayer and Cal-Miser SH 1600 aluminum holding furnace

**Status: Sold**

## **Specifications:**

## **Metric / U.S. Standard**

Locking Force:	362.8 tons / 400 tons
Tie Bar Diameter:	127 mm / 5 inches
Clearance Between Tie Bars:	609.6 x 609.6 mm / 24 x 24 inches
Die Thickness (minimum - maximum):	304.8 - 762 mm / 12 - 30 inches
Die Stroke:	381 mm / 15 inches
Moving Platen Size (H x V):	990.6 x 1111.25 mm / 39 x 43.75 inches
Shot Positions (Removable Insert):	Center to -152.4 mm Below Center / Center to -6 inches Below Center
Injection Cylinder Stroke:	368.3 - 469.9 mm / 14.5 - 18.5 inches
Ejector Stroke & Force:	127 mm & 11.53 tons / 5 inches & 12.72 tons
Main Motor Power:	30 kw / 40 HP
Machine Size(H x V x W):	6.5 x 2.97 x 2.03 meters / 21.4 x 9.8 x 6.7 feet
Approximate Weight:	17,236 kg / 38,000 pounds

## **Features & Accessories:**

Safety Ratchet Device, Manual Operator & Helper Safety Door

Allen Bradley SLC 5/03 Solid State Controls

Center Platen Hydraulic Ejection plus Fixed Mechanical Ejector Plate

Trabon Oil Type Automatic Lubrication System

One (1) Auxiliary Hydraulic Side Core Circuit on Moving Platen & One (1) on Stationary Platen

Hydraulic Motorized Die Height Automatic System

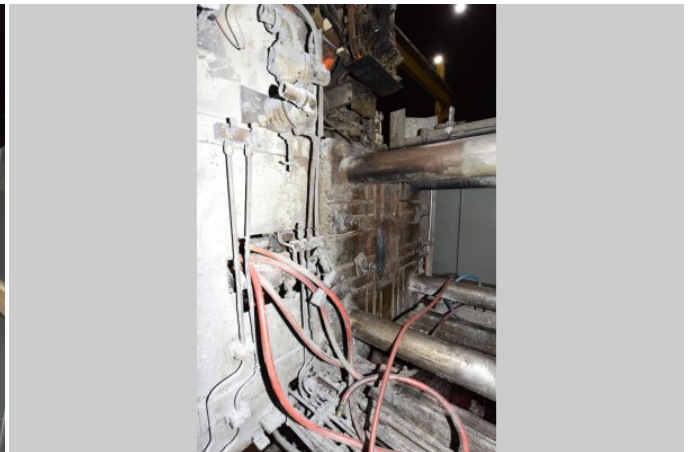
## **Terms of Sale:**

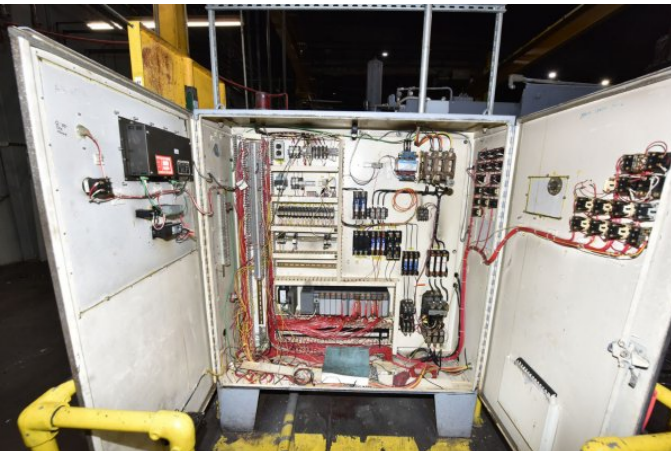
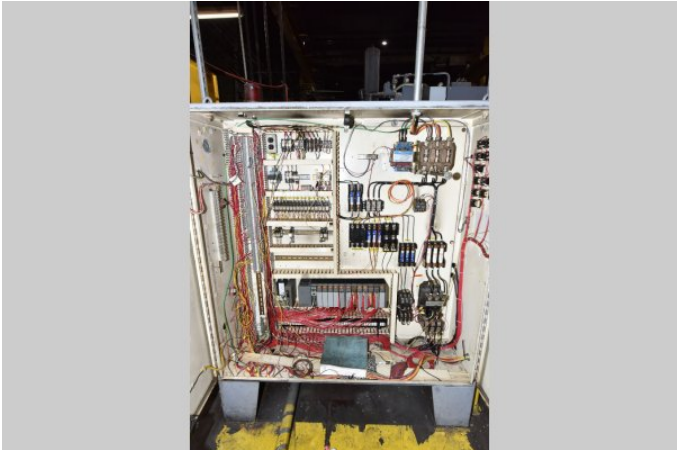
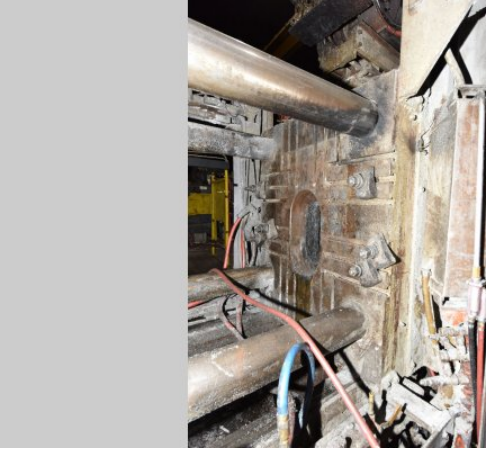
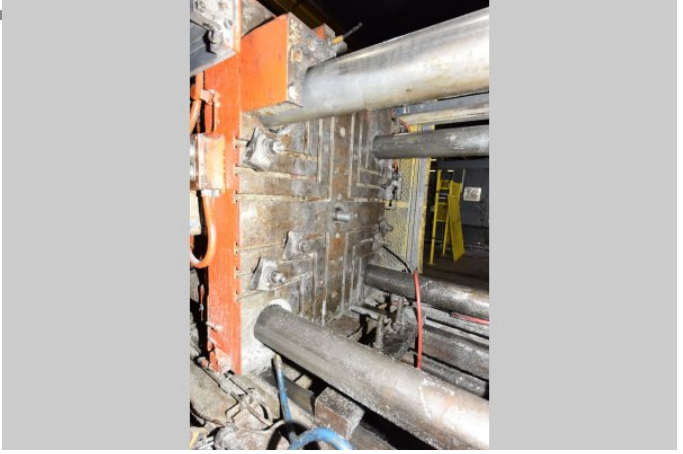
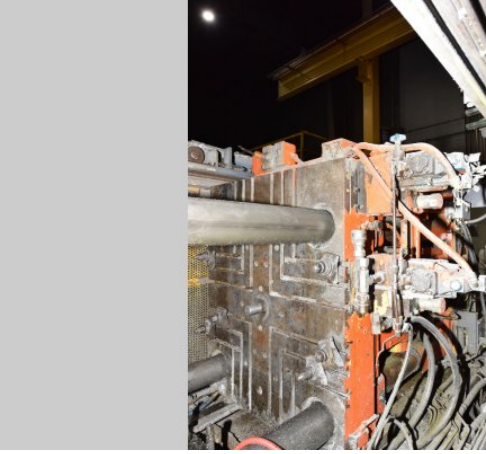
Price: [request quotation](#)

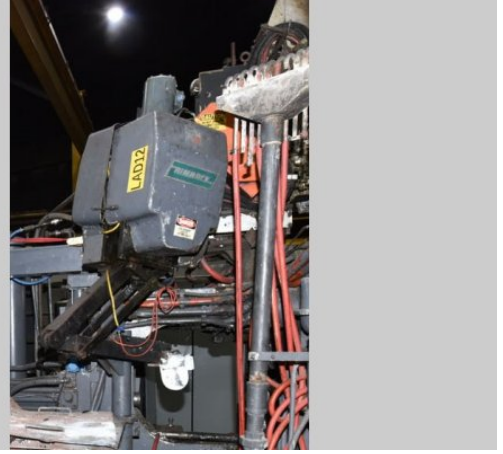
Shipping Terms: Ex-works

**Product Photos:**

*Click on any image for a larger view*







**Description:** Used, HPM Model II-400-A 400 U.S. Tons Horizontal Cold Chamber Aluminum High Pressure Die Casting Machine For Sale, Features include: Safety Ratchet Device, Manual Operator & Helper Safety Door , Allen Bradley SLC 5/03 Solid State Controls, Center Platen Hydraulic Ejection plus Fixed Mechanical Ejector Plate, Trabon Oil Type Automatic Lubrication System, One (1) Auxiliary Hydraulic Side Core Circuit on Moving Platen & One (1) on Stationary Platen, Hydraulic Motorized Die Height Automatic System , Allen Bradley SLC 5/03 Solid State Controls Controls, Second Hand, DCM-5187

**PURCHASER'S (Buyer's) RESPONSIBILITY AND INDEMNITY:** Used machines, equipment or any part thereof, may not incorporate approved activating mechanisms, operator safety devices or safety guards as required by OSHA or otherwise. It shall be a Purchaser's (Buyer's) responsibility to ensure that any and all merchandise or equipment purchased from Die Cast Machinery, LLC or its affiliates is installed and operated in a proper and safe manner. Purchaser (Buyer) also acknowledges that it may have to install or change guards, safeties, warnings or other components to ensure that the merchandise or machines purchased will conform to all laws, codes, regulations, ordinances, statutes, insurance requirements and industry standards. Purchaser agrees to defend, indemnify and hold harmless Die Cast Machinery, LLC from and against all suits, claims, costs, damages and expenses, including, but not limited to, reasonable attorneys' fees, arising out of, or in connection with, the transportation, purchase, ownership, or use of the merchandise or equipment sold hereunder. Information has been obtained from sources deemed reliable, buyers should avail themselves of the opportunity to inspect the items before purchase.