



Die Cast Machinery, LLC Inventory number ??: 5121

We offer for sale, subject to availability, prior sale and the terms listed below:

HPM 600 U.S. Tons Horizontal Cold Chamber Aluminum High Pressure Die Casting Machine

Model: II-600-A

**Status: Sold**

## **Specifications:**

## **Metric / U.S. Standard**

Locking Force:	545 tons / 600 tons
Tie Bar Diameter:	152 mm / 6 inches
Clearance Between Tie Bars (H x V):	736 mm x 736 mm / 29 x 29 inches
Die Thickness (minimum - maximum):	355 mm - 914 mm / 14 - 36 inches
Die Stroke (minimum - maximum):	304 mm - 457 mm / 12 - 18 inches
Moving Platen Size:	1219 mm x 1219 mm / 48 x 48 inches
Shot Positions:	Inserted, Center to -228.6 mm Below / Inserted, Center to -9 inches Below
Shot Cylinder Stroke:	482 mm - 584 mm / 19 - 23 inches
Shot Intensification:	Multiplier Cylinder / Multiplier Cylinder
Power:	480/3/60 / 480/3/60
Machine Size:	2.2 x 8 m / 7.1 x 26.2 feet
Machine Weight:	21,274 kg / 57,000 pounds

## **Features & Accessories:**

Hydraulic Bumper Plate Ejection System  
Hydraulic Motorized Die Height Automatic System  
Manual Operator & Helper Side Doors, Air Safety Ratchet  
Trabon Grease Type Automatic Lubrication System  
Auxiliary Hydraulic Side Core Circuit One (1) on Moving Platen & One (1) on Stationary Platten  
Allen Bradley SLC 5/03 Solid State Controls with Allen Bradley Panel View 550 HMI

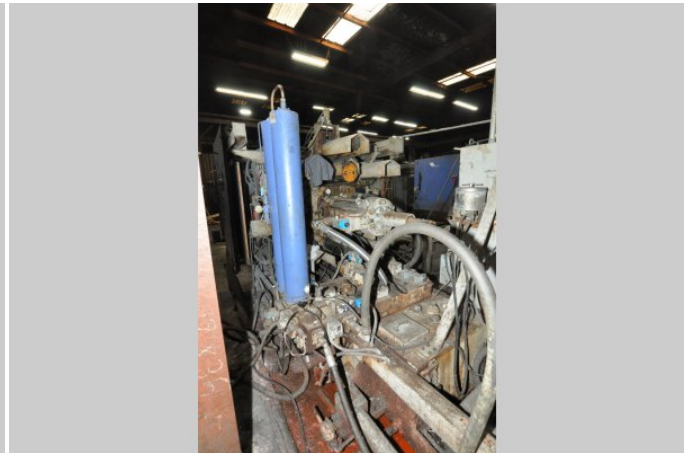
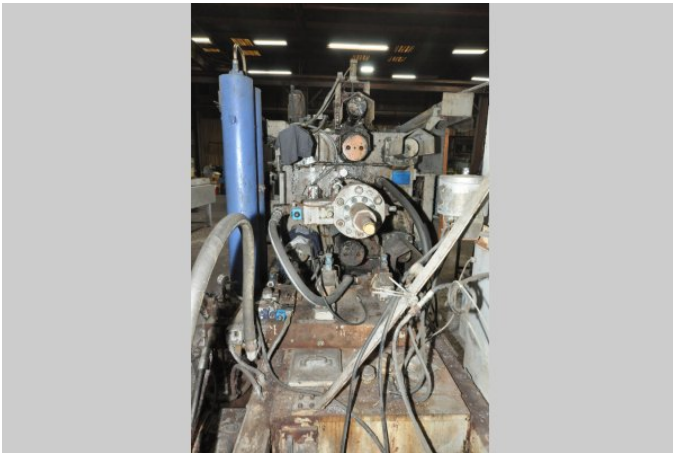
## **Terms of Sale:**

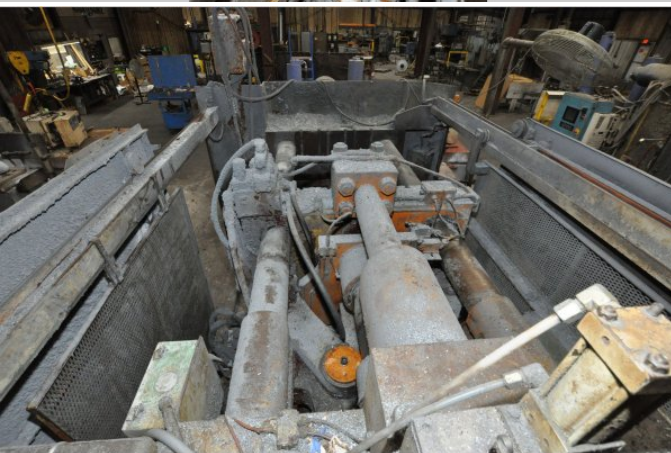
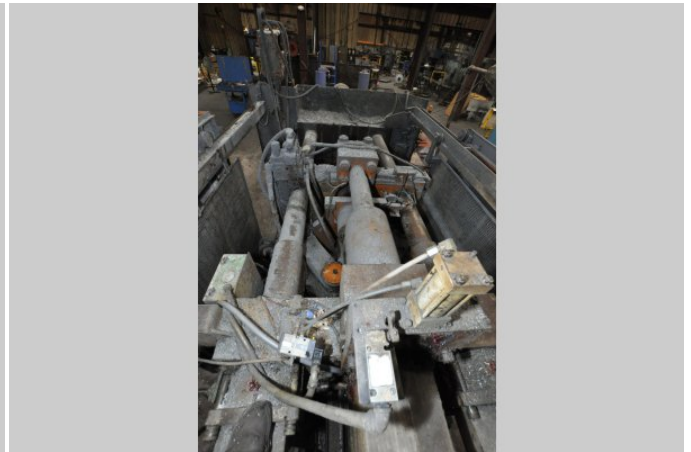
Price: [request quotation](#)

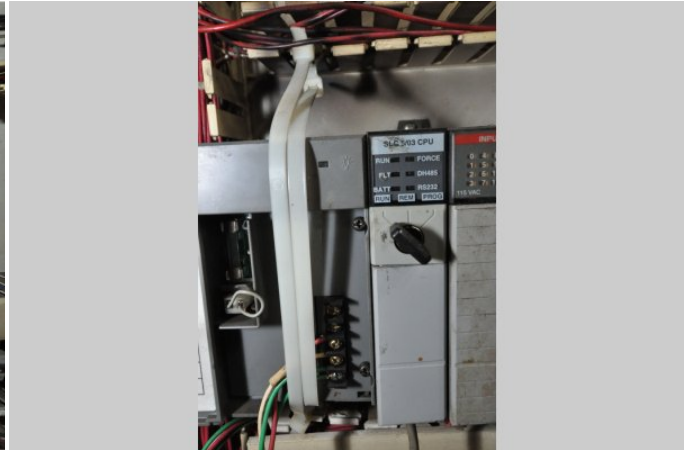
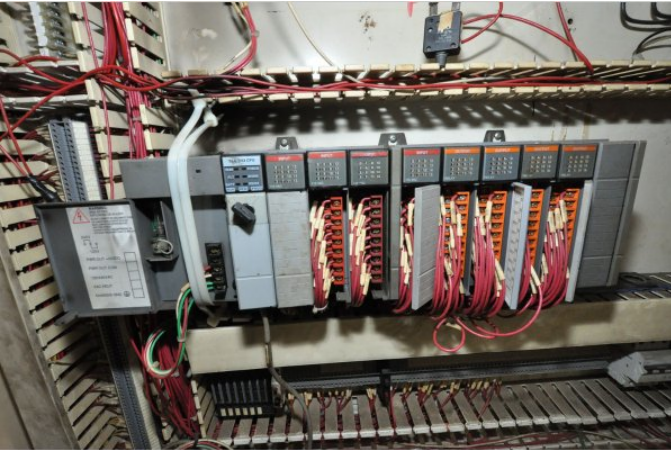
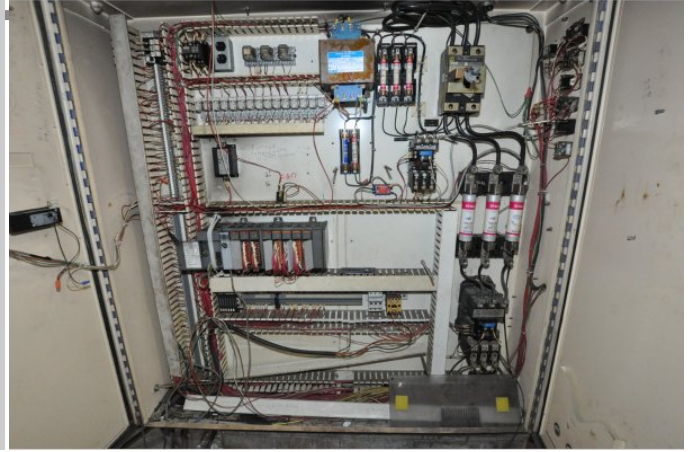
Shipping Terms: Ex-works

**Product Photos:**

*Click on any image for a larger view*







**Description:** Used, HPM Model II-600-A 600 U.S. Tons Horizontal Cold Chamber Aluminum High Pressure Die Casting Machine For Sale, Features include: Hydraulic Bumper Plate Ejection System, Hydraulic Motorized Die Height Automatic System , Manual Operator & Helper Side Doors, Air Safety Ratchet, Trabon Grease Type Automatic Lubrication System, Auxiliary Hydraulic Side Core Circuit One (1) on Moving Platen & One (1) on Stationary Platten, Allen Bradley SLC 5/03 Solid State Controls with Allen Bradley Panel View 550 HMI, Allen Bradley SLC 5/03 Solid State Control Controls, Second Hand, DCM-5121

**PURCHASER'S (Buyer's) RESPONSIBILITY AND INDEMNITY:** Used machines, equipment or any part thereof, may not incorporate approved activating mechanisms, operator safety devices or safety guards as required by OSHA or otherwise. It shall be a Purchaser's (Buyer's) responsibility to ensure that any and all merchandise or equipment purchased from Die Cast Machinery, LLC or its affiliates is installed and operated in a proper and safe manner. Purchaser (Buyer) also acknowledges that it may have to install or change guards, safeties, warnings or other components to ensure that the merchandise or machines purchased will conform to all laws, codes, regulations, ordinances, statutes, insurance requirements and industry standards. Purchaser agrees to defend, indemnify and hold harmless Die Cast Machinery, LLC from and against all suits, claims, costs, damages and expenses, including, but not limited to, reasonable attorneys' fees, arising out of, or in connection with, the transportation, purchase, ownership, or use of the merchandise or equipment sold hereunder. Information has been obtained from sources deemed reliable, buyers should avail themselves of the opportunity to inspect the items before purchase.