



Die Cast Machinery, LLC Inventory number ??: 5184

We offer for sale, subject to availability, prior sale and the terms listed below:

Used HPM Model: II-900-A 900 US Ton Horizontal Cold Chamber Aluminum High Pressure Die Casting Machine

Model: II-900-A

Machine Purchase Includes Rimrock 305 automatic lade and Rimrock 410 Die Sprayer with Epic controls

Status: Sold

Specifications:

Metric / U.S. Standard

Locking Force:	816 tons / 900 tons
Tie Bar Diameter:	203 mm / 8 inches
Clearance Between Tie Bars:	965 x 965 mm / 38 x 38 inches
Die Thickness (minimum - maximum):	406 - 1016 mm / 16 - 40 inches
Die Stroke (minimum - maximum):	884 - 736 mm / 23 - 29 inches
Moving Platen Size:	1549 x 1549 mm / 61 x 61 inches
Shot Positions (removable Insert):	Center to -76.2, -152.4, -228.8 mm / Center, -3, -6, -9 inches
Injection Cylinder Stroke:	584 - 736 mm / 23 - 29 inches
Ejector Stroke & Force:	127 mm & 21.4 tons / 5 inches & 23.6 tons
Main Motor Power:	44.76 kw / 60 HP
Machine Size:	9.48 x 2.62 x 3.51 meters / 31.1 x 8.6 x 11.5 feet
Machine Weight:	46,818 kg / 103,000 pounds

Features & Accessories:

Top Operator Side Automatic Tie Bar Puller System
Allen Bradley SLC 5/03 Series Solid State Programmable Controls
Hydraulic Center Platen Ejection System plus Mechanical Bumper Plate
Trabon Automatic Oil Type Lubrication System - Dual-Lube System with Separate Oil & Grease Systems
Two (2) Auxiliary Hydraulic Side Core Circuits on fixed platen, one Core on Moving Platen
Hydraulic Powered Motorized Die Height Adjustment

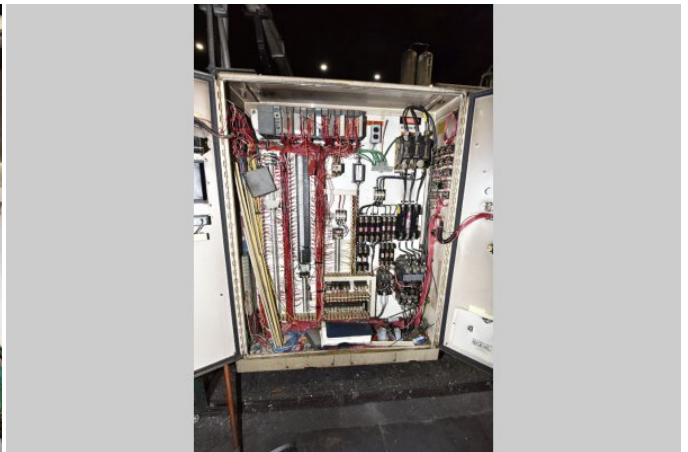
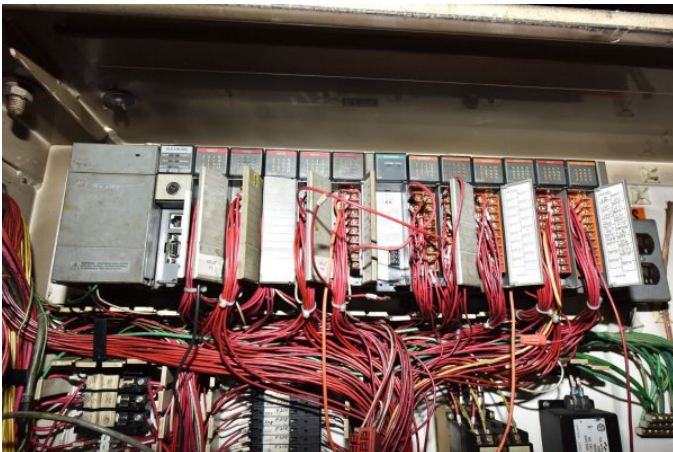
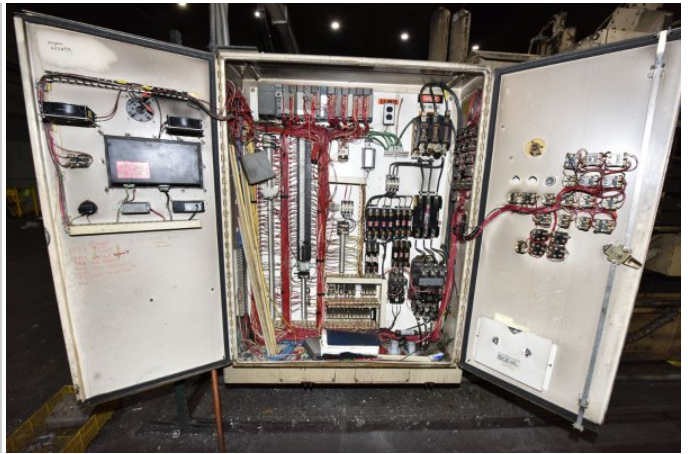
Terms of Sale:

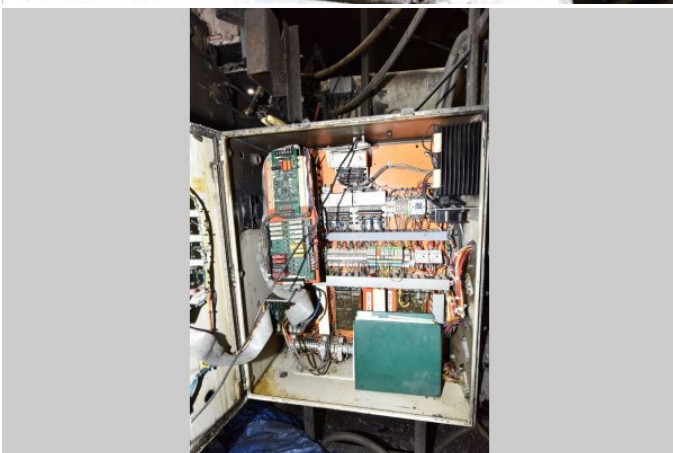
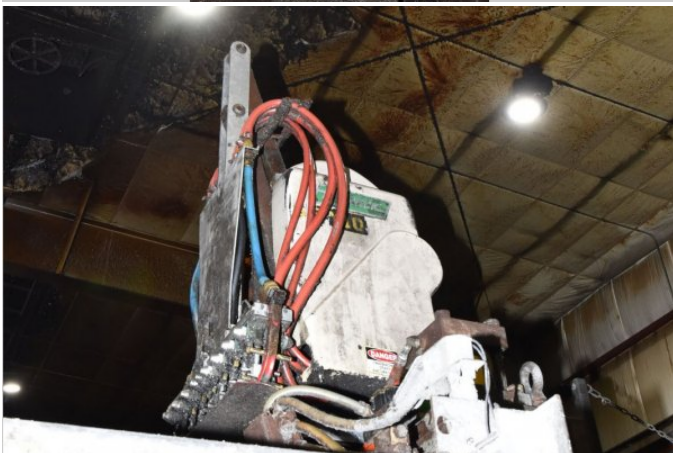
Price: [request quotation](#)

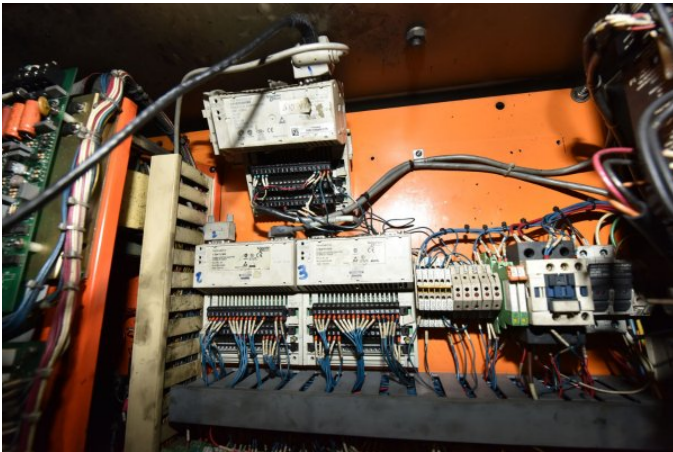
Shipping Terms: Ex-works

Product Photos:

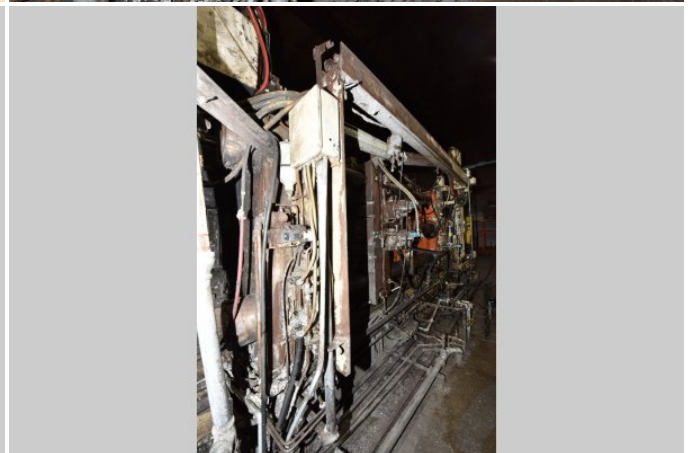
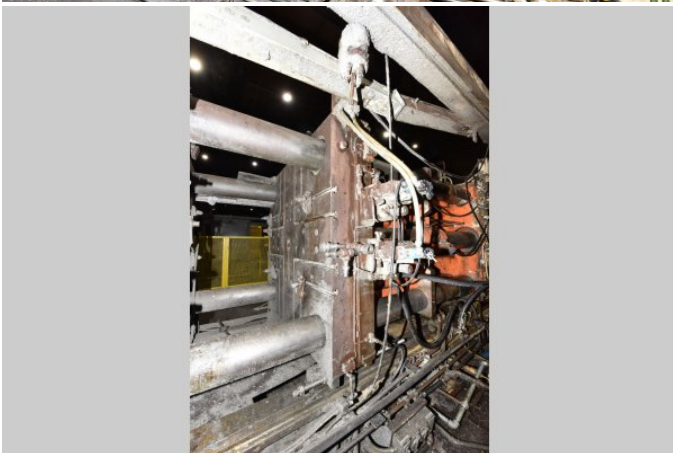
Click on any image for a larger view

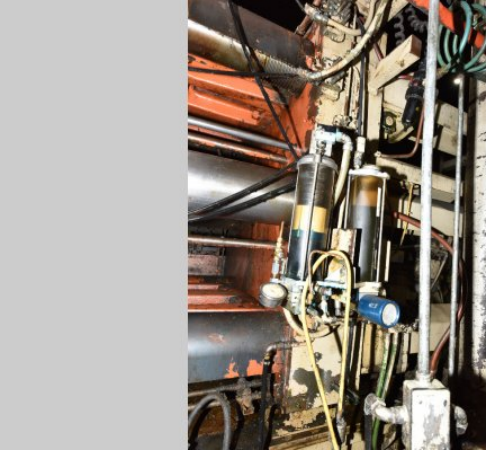






ELECTRICAL CHARACTERISTICS			
MACHINE SERIAL NO.	94573		
SUPPLY - VOLTS	460	PH. 3	FREQ. 60
FULL LOAD CURRENT	91.1		
SEPARATE SUPPLY - VOLTS		PH.	FREQ.
FULL LOAD CURRENT			
AMPERE RATING OF LARGEST MOTOR	76.0		
INTERRUPTING CAPACITY	25,000	AMPS	
WIRING DIAG. NO.	40507-0885		
OVERCURRENT PROTECTION PROVIDED AT MACHINE SUPPLY TERMINALS			
ELECTRICAL EQUIPMENT AND WIRING ON THIS MACHINE CONFORMS TO NFPA 79			
STANDARD FOR METALWORKING MACHINE TOOLS AND PLASTIC MACHINERY			
HPM CORPORATIO			98091-1431





Description: Used, HPM Model II-900-A 900 US Ton Horizontal Cold Chamber Aluminum High Pressure Die Casting Machine For Sale, Features include: Top Operator Side Automatic Tie Bar Puller System, Allen Bradley SLC 5/03 Series Solid State Programmable Controls, Hydraulic Center Platen Ejection System plus Mechanical Bumper Plate, Trabon Automatic Oil Type Lubrication System - Dual-Lube System with Separate Oil & Grease Systems, Two (2) Auxiliary Hydraulic Side Core Circuits on fixed platen, one Core on Moving Platen, Hydraulic Powered Motorized Die Height Adjustment, Allen Bradley SLC 5/03 Series Solid State Programmable Controls, Second Hand, DCM-5184

PURCHASER'S (Buyer's) RESPONSIBILITY AND INDEMNITY: Used machines, equipment or any part thereof, may not incorporate approved activating mechanisms, operator safety devices or safety guards as required by OSHA or otherwise. It shall be a Purchaser's (Buyer's) responsibility to ensure that any and all merchandise or equipment purchased from Die Cast Machinery, LLC or its affiliates is installed and operated in a proper and safe manner. Purchaser (Buyer) also acknowledges that it may have to install or change guards, safeties, warnings or other components to ensure that the merchandise or machines purchased will conform to all laws, codes, regulations, ordinances, statutes, insurance requirements and industry standards. Purchaser agrees to defend, indemnify and hold harmless Die Cast Machinery, LLC from and against all suits, claims, costs, damages and expenses, including, but not limited to, reasonable attorneys' fees, arising out of, or in connection with, the transportation, purchase, ownership, or use of the merchandise or equipment sold hereunder. Information has been obtained from sources deemed reliable, buyers should avail themselves of the opportunity to inspect the items before purchase.