



Die Cast Machinery, LLC Inventory number: 5078

We offer for sale, subject to prior sale and the terms listed below:

Used Idra 609 Metric Ton (669 U.S. Tons) Horizontal Cold Chamber Aluminum/Magnesium Capable High Pressure Die Casting Machine

Model: OL 560 PPR

Upgraded to Visi-Trak Sure-Shot 2 Closed Loop Servo Shot System

**Status: Sold**

## **Specifications:**

## **Metric / U.S. Standard**

Locking Force:	5980 KN (609 metric tons) / 669 Tons
Tie Bar Diameter:	140 mm / 5.51 inches
Clearance Between Tie Bars:	710 mm / 27.95 inches
Die Thickness (minimum - maximum):	350 - 825 mm / 13.77 - 32.48 inches
Die Stroke (maximum):	760 mm / 29.92 inches
Moving Platen Size:	1065 x 1065 / 41.92 x 41.92 inches
Shot Positions:	center to -254 mm below center (inserted) / Center to -10 inches below center (inserted)
Injection Stroke:	530 mm / 20.9 inches
Maximum Injection Force:	590 Kn (60.1 metric tons) / 66 U.S. Tons
Ejection Force:	265 KN / 29 tons
Machine Size:	7050 x 2195 x 2725 mm / 23.1 x 7.2 x 8.9 Feet
Machine Weight:	22.5 Tons / 49,500 pounds

## **Features & Accessories:**

Fully Automatic Top Operator Side Tie Bar Pulling System  
Hydraulic Motorized Die Height Adjustment  
Hydraulic Bumper Plate Ejection System  
Two (2) Auxiliary Hydraulic Side Core Circuits on Moving Platen, One (1) on Stationary Platen  
Fully Proportional Hydraulics, Power Operator Side and Power Helper Side Doors  
Air Safety Ratchet Device, Automatic Lubrication System - Pressurized Oil Type

## **Optional Equipment Available with Machine at additional cost: (click on item to view)**

[Idra Model OL-1750, 1750 Metric ton die cast machine, new 1996](#)

[Idra OL 560 PPR Cold Chamber Die Cast Machine](#)

[Idra OL-900 PRP 990 ton capacity - Complete cell available, Ladle, Sprayer, Extractor, Furnace](#)

[Idra OL 560 PPR Cold Chamber Die Cast Machine](#)

[Idra OL-900 PRP 990 ton capacity - Complete cell available, Ladle, Sprayer, Extractor, Furnace](#)

[Idra OL 560 PPR Cold Chamber Die Cast Machine](#)

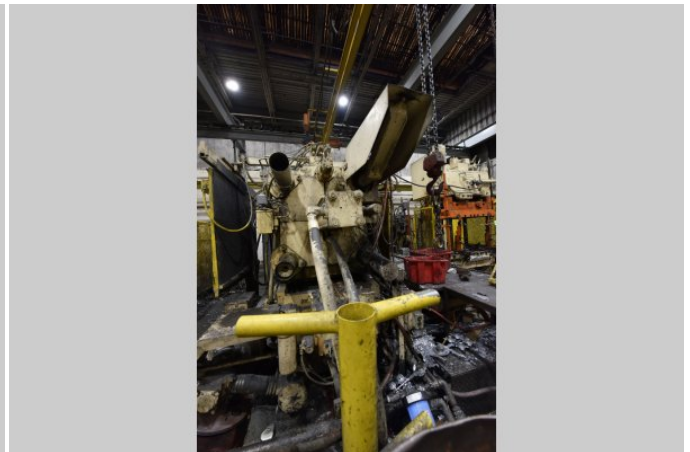
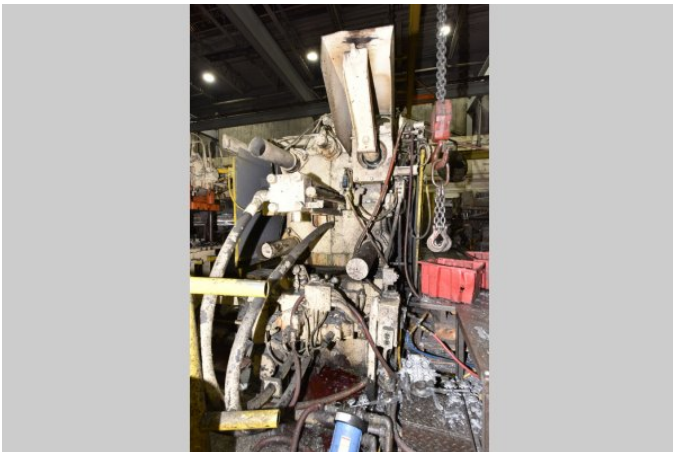
## **Terms of Sale:**

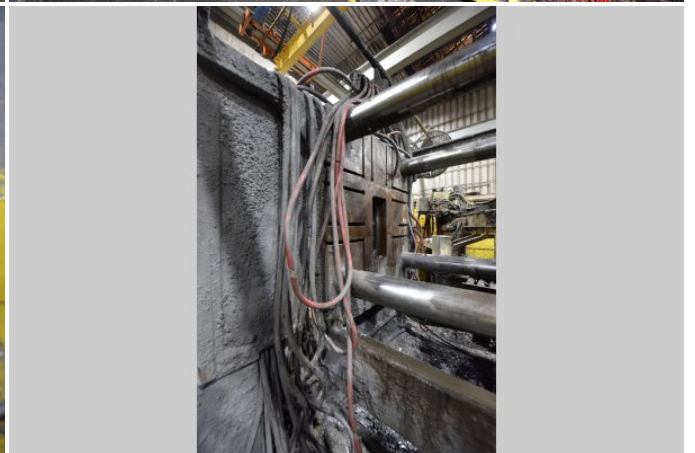
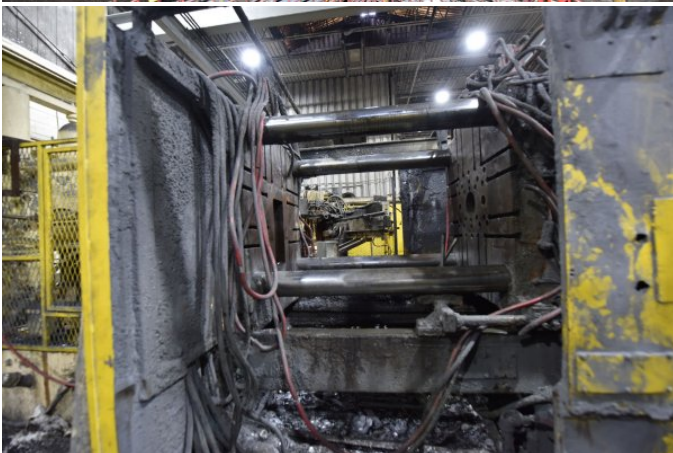
Price: [request quotation](#)

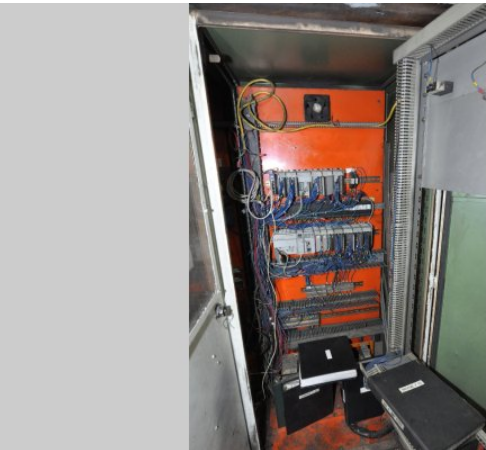
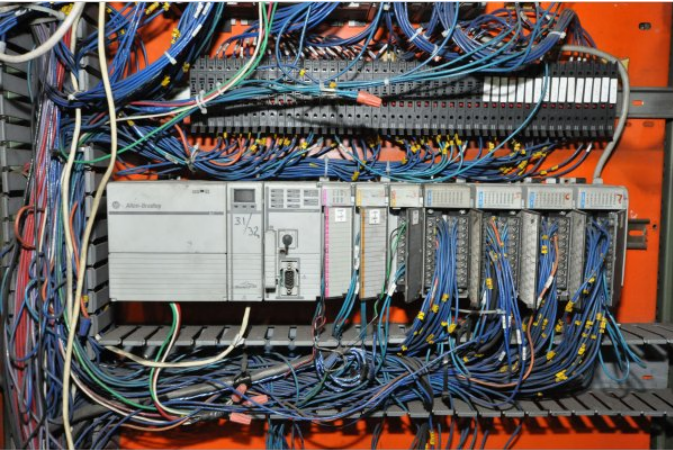
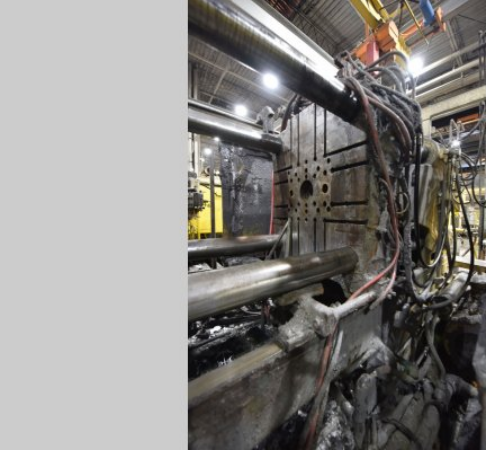
Shipping Terms: Ex-works

**Product Photos:**

*Click on any image for a larger view*







**Description:** Used, Idra Model OL 560 PPR 609 Metric Ton (669 U.S. Tons) Horizontal Cold Chamber Aluminum/Magnesium Capable High Pressure Die Casting Machine For Sale, Features include: Fully Automatic Top Operator Side Tie Bar Pulling System, Hydraulic Motorized Die Height Adjustment, Hydraulic Bumper Plate Ejection System, Two (2) Auxiliary Hydraulic Side Core Circuits on Moving Platen, One (1) on Stationary Platen, Fully Proportional Hydraulics, Power Operator Side and Power Helper Side Doors, Air Safety Ratchet Device, Automatic Lubrication System - Pressurized Oil Type, Allen Bradley ControlLogix with Visi-Trak Sure-Shot 2 Closed Loop Servo Shot System Controls, Second Hand, DCM-5078

**PURCHASER'S (Buyer's) RESPONSIBILITY AND INDEMNITY:** Used machines, equipment or any part thereof, may not incorporate approved activating mechanisms, operator safety devices or safety guards as required by OSHA or otherwise. It shall be a Purchaser's (Buyer's) responsibility to ensure that any and all merchandise or equipment purchased from Die Cast Machinery, LLC or its affiliates is installed and operated in a proper and safe manner. Purchaser (Buyer) also acknowledges that it may have to install or change guards, safeties, warnings or other components to ensure that the merchandise or machines purchased will conform to all laws, codes, regulations, ordinances, statutes, insurance requirements and industry standards. Purchaser agrees to defend, indemnify and hold harmless Die Cast Machinery, LLC from and against all suits, claims, costs, damages and expenses, including, but not limited to, reasonable attorneys' fees, arising out of, or in connection with, the transportation, purchase, ownership, or use of the merchandise or equipment sold hereunder. Information has been obtained from sources deemed reliable, buyers should avail themselves of the opportunity to inspect the items before purchase.