

Die Cast Machinery, LLC Inventory number: 5089

We offer for sale, subject to prior sale and the terms listed below:

Used Idra 938 Metric Ton (1,034 U.S. Ton) Horizontal Cold Chamber Aluminum High Pressure Die Casting Machine

Model: OL-900S

**Status: Sold**

## **Specifications:**

## **Metric / U.S. Standard**

Locking Force	938 Metric Tons (9,200 Kn) / 1,034 U.S. tons
Tie Bar Diameter	180 mm / 7 inches
Clearance Between Tie Bars	910 mm / 35.83 inches
Die Thickness (minimum - maximum)	999 - 450 mm / 39.37 - 17.72 inches
Die Stroke	899 mm / 35.43 inches
Moving Platen Size	1406 x 1406 mm / 55.35 x 55.35 inches
Maximum Injection Force	806 KN / 90 tons
Shot Positions (inserted, adjustable):	Center to - 254 / Center to -10 inches
Ejection Force	385 KN / 43.28 tons
Power	55 KW / 73 hp
Machine Size (L x W)	9.02 x 3.81 m / 29 feet 6 inches x 12 feet
Machine Weight	41.98 Metric tons / 46.29 tons

## **Features & Accessories:**

Fully Proportional Hydraulics

Top Operator Side Automatic Tie Bar Pulling System

Hydraulic Ejection, Four (4) Auxiliary Hydraulic Core Circuits on Moving Platen/ One (1) Auxiliary Hydraulic Core Circuits on Stationary Platen

Air Safety Ratchet Device, Oil Type Central Automatic Lubrication System

Hydraulic Motorized Die Height Adjustment

Power Operator Side and Power Helper Side Doors

## **Optional Equipment Available with Machine at additional cost: (click on item to view)**

[Idra OL-900S 990 ton capacity - Complete cell available, Ladle, Sprayer, Extractor, Furnace](#)

[Idra OL-560S Cold Chamber Die Cast Machine](#)

## **Terms of Sale:**

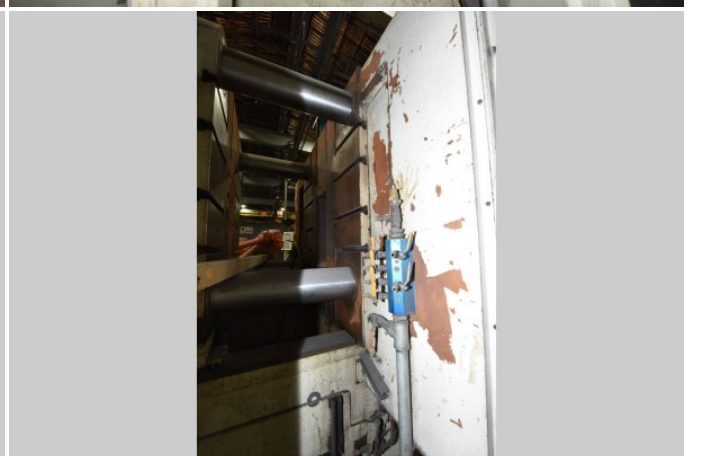
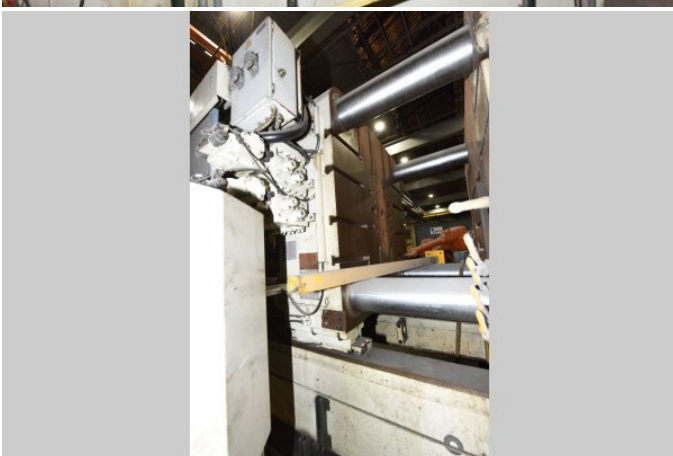
Price: [request quotation](#)

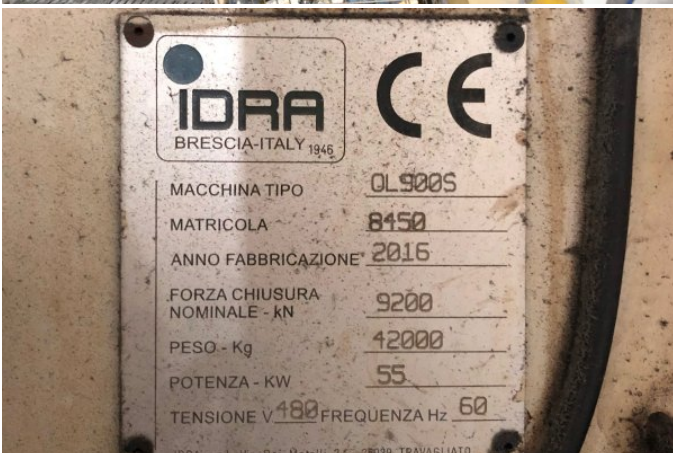
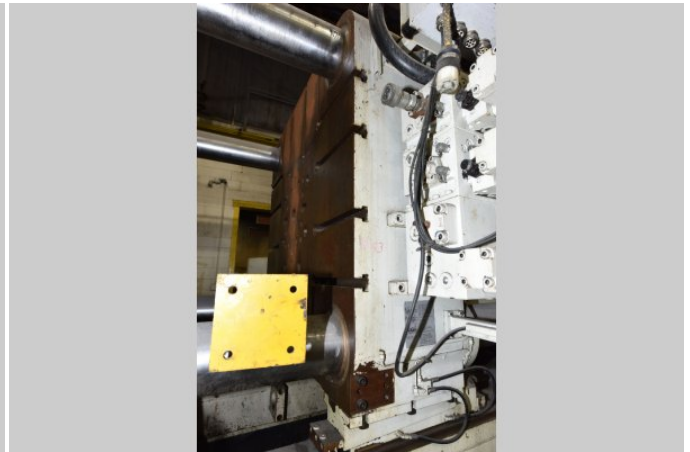
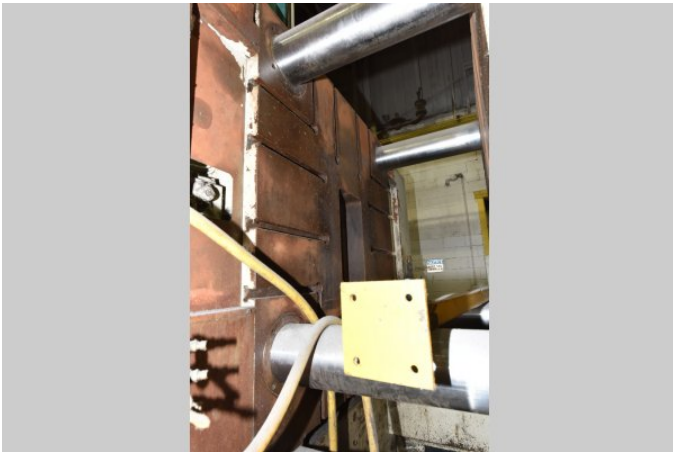
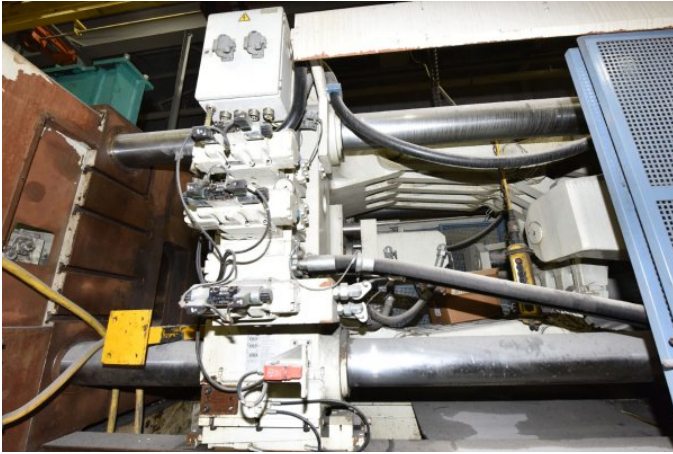
Shipping Terms: Ex-works

**Product Photos:**

*Click on any image for a larger view*









**Description:** Used, Idra Model OL-900S 938 Metric Ton (1,034 U.S. Ton) Horizontal Cold Chamber Aluminum High Pressure Die Casting Machine For Sale, Features include: Fully Proportional Hydraulics, Top Operator Side Automatic Tie Bar Pulling System, Hydraulic Ejection, Four (4) Auxiliary Hydraulic Core Circuits on Moving Platen/ One (1) Auxiliary Hydraulic Core Circuits on Stationary Platen , Air Safety Ratchet Device, Oil Type Central Automatic Lubrication System, Hydraulic Motorized Die Height Adjustment, Power Operator Side and Power Helper Side Doors, Siemens S5 Solid State PLC Controls Controls, Second Hand, DCM-5089

**PURCHASER'S (Buyer's) RESPONSIBILITY AND INDEMNITY:** Used machines, equipment or any part thereof, may not incorporate approved activating mechanisms, operator safety devices or safety guards as required by OSHA or otherwise. It shall be a Purchaser's (Buyer's) responsibility to ensure that any and all merchandise or equipment purchased from Die Cast Machinery, LLC or its affiliates is installed and operated in a proper and safe manner. Purchaser (Buyer) also acknowledges that it may have to install or change guards, safeties, warnings or other components to ensure that the merchandise or machines purchased will conform to all laws, codes, regulations, ordinances, statutes, insurance requirements and industry standards. Purchaser agrees to defend, indemnify and hold harmless Die Cast Machinery, LLC from and against all suits, claims, costs, damages and expenses, including, but not limited to, reasonable attorneys' fees, arising out of, or in connection with, the transportation, purchase, ownership, or use of the merchandise or equipment sold hereunder. Information has been obtained from sources deemed reliable, buyers should avail themselves of the opportunity to inspect the items before purchase.