

Die Cast Machinery, LLC Inventory number ??: 5486

We offer for sale, subject to availability, prior sale and the terms listed below:

Used Imprex Model: 36X48RA 36 inches Wet Process Vacuum Pressure Impregnation (VPI) System for Metal Casting Impregnation

Model: 36X48RA

Status: Sold

Specifications:

Metric / U.S. Standard

Tank Interior dimensions:	914.4 mm DVI system / 36 inches DVI system
Square tanks dimensions (length x width x depth):	1143 x 1066.8 x 1371.6 mm / 45 x 42 x 54 inches
Autoclave approx dimensions:	914.4 mm diameter / 36 inches Diameter
Centrifuge approx dimensions:	1270 mm depth / 50 inches Depth

Features & Accessories:

Optional - Approximately 4 drums of UltraSeal available for \$4,000.00

Equipped with free-standing steel craine and hoist. Dimensions are (length x width x height) 40 x 14 x 14 feet

System can fit one basket per cycle. There are 5 large baskets. Each basket dimension are 34 inches diameter x 31 inches in height

Each tank minus the cure tank have rotation. The cure tank uses aeration.

Rinse and Cure tanks are stainless lined and autoclave, roll recovery tank, centrifuge, and drain tank are carbon steel

Upgraded with BUSCH 165D pump

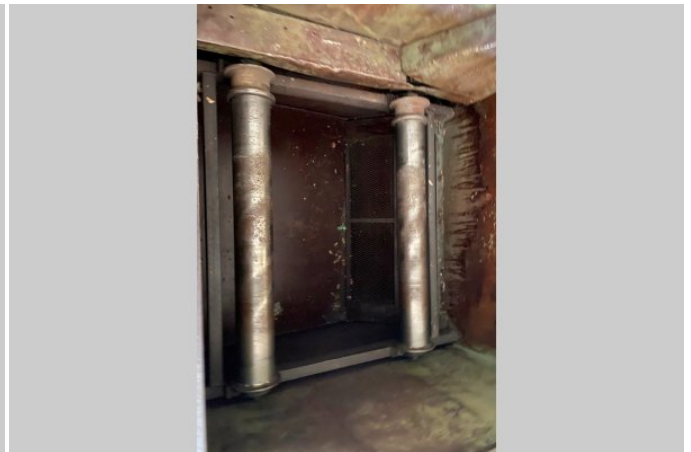
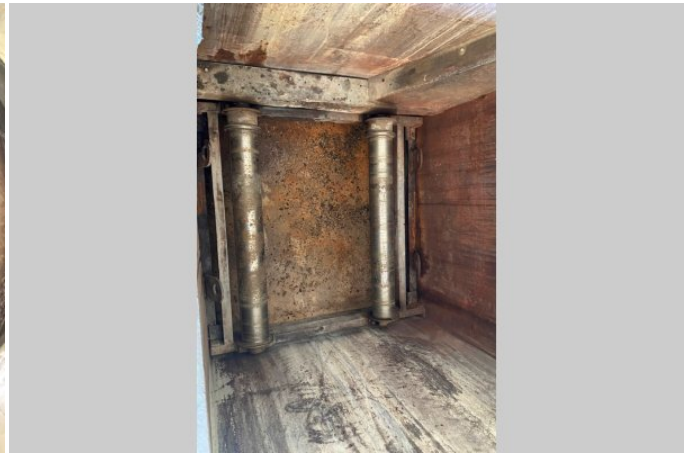
Terms of Sale:

Price: [request quotation](#)

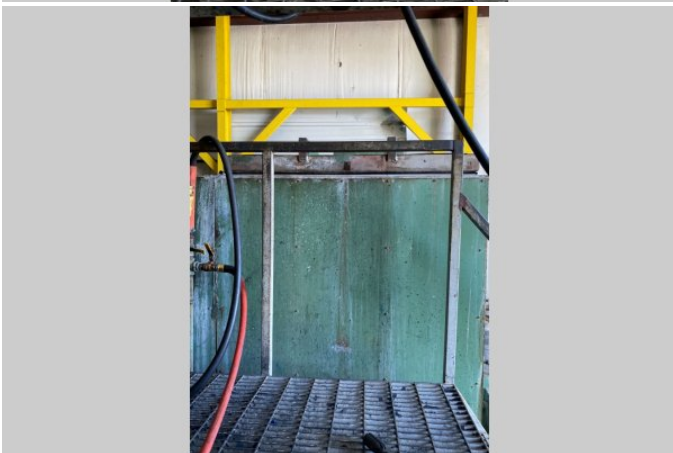
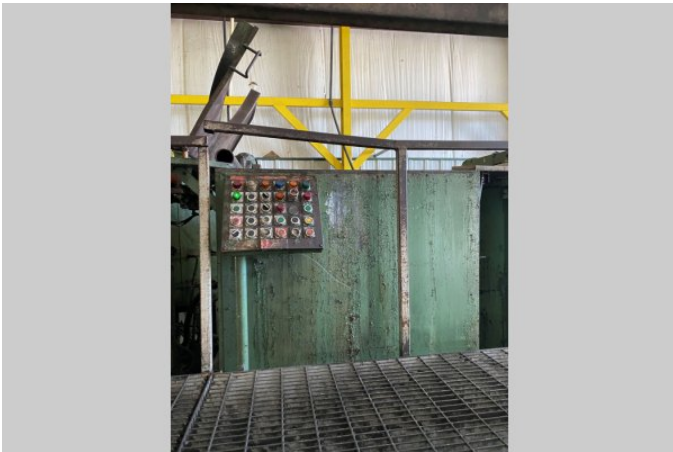
Shipping Terms: Ex-works

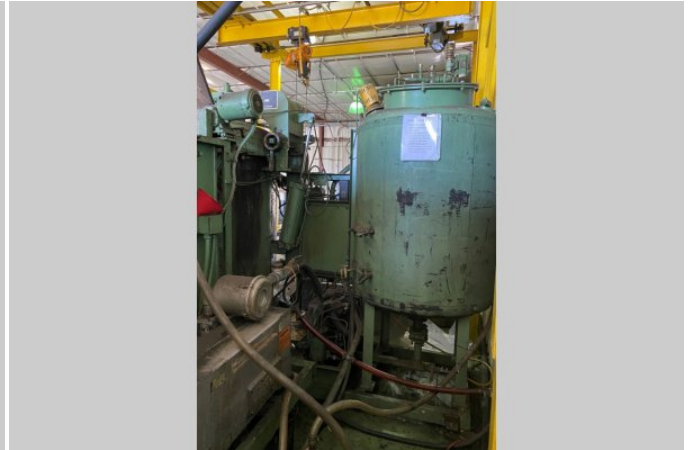
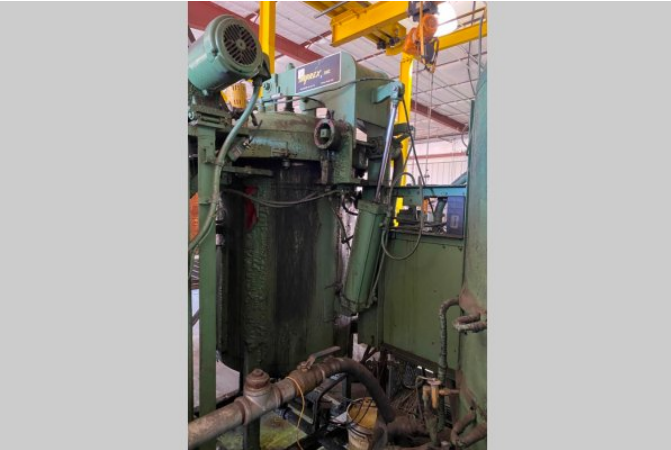
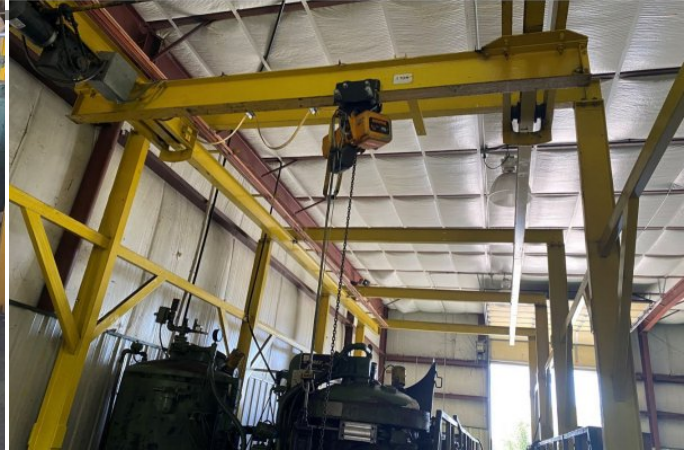
Product Photos:

Click on any image for a larger view









Description: Used, Imprex Model 36X48RA 36 inches Wet Process Vacuum Pressure Impregnation (VPI) System for Metal Casting Impregnation For Sale, Features include: Optional - Approximately 4 drums of UltraSeal available for \$4,000.00, Equipped with free-standing steel craine and hoist. Dimensions are (length x width x height) 40 x 14 x 14 feet, System can fit one basket per cycle. There are 5 large baskets. Each basket dimension are 34 inches diameter x 31 inches in height, Each tank minus the cure tank have rotation. The cure tank uses aeration. , Rinse and Cure tanks are stainless lined and autoclave, roll recovery tank, centrifuge, and drain tank are carbon steel, Upgraded with BUSCH 165D pump, Imprex Controls, Second Hand, DCM-5486

PURCHASER'S (Buyer's) RESPONSIBILITY AND INDEMNITY: Used machines, equipment or any part thereof, may not incorporate approved activating mechanisms, operator safety devices or safety guards as required by OSHA or otherwise. It shall be a Purchaser's (Buyer's) responsibility to ensure that any and all merchandise or equipment purchased from Die Cast Machinery, LLC or its affiliates is installed and operated in a proper and safe manner. Purchaser (Buyer) also acknowledges that it may have to install or change guards, safeties, warnings or other components to ensure that the merchandise or machines purchased will conform to all laws, codes, regulations, ordinances, statutes, insurance requirements and industry standards. Purchaser agrees to defend, indemnify and hold harmless Die Cast Machinery, LLC from and against all suits, claims, costs, damages and expenses, including, but not limited to, reasonable attorneys' fees, arising out of, or in connection with, the transportation, purchase, ownership, or use of the merchandise or equipment sold hereunder. Information has been obtained from sources deemed reliable, buyers should avail themselves of the opportunity to inspect the items before purchase.