

Die Cast Machinery, LLC Inventory number: 4797

We offer for sale, subject to prior sale and the terms listed below:

Used Kawasaki 80 Kilogram Six Axis Foundry Rated Industrial Robot

Model: RS-080N

Available as a complete die cast cell including: Die Cast Machine, Rimrock 305 ladle, Cal-Miser low energy aluminum holding furnace, Kawasaki RS-080N six axis robot for die spray and part extract. Premier Die Casting Company Die Cast Cell #15

Status: Sold

Specifications:	Metric / U.S. Standard
Number of Axis:	6 / 6
Payload Capacity:	80 kg / 176.37 pounds
Reach:	2.100 meter / 82.6 inches
Axis 1 Rotation Motion:	+/- 180 degrees - 180 °/second / +/- 180 degrees - 180 °/second
Axis 2 Arm Out-in:	+140/-105 degrees - 180 °/second / +140/-105 degrees - 180 °/second
Axis 3 Arm Up-down:	+135/-155 degrees - 160 °/second / +135/-155 degrees - 160 °/second
Axis 4 Wrist Swivel:	+/- 360 degrees - 185 °/second / +/- 360 degrees - 185 °/second
Axis 5 Wrist Bend:	+/- 145 degrees - 165 °/second / +/- 145 degrees - 165 °/second
Axis 6 Wrist Twist:	+/- 360 degrees - 280°/second / +/- 360 degrees - 280°/second
Power:	460/3/60 / 460/3/60
Approximate Machine Weight:	555 KG / 1,223 pounds

Features & Accessories:

- Compact Arm Design
- Fast maneuverability
- Heavy Payload Capability
- Renowned Kawasaki Parts and Service

Optional Equipment Available with Machine at additional cost: (click on item to view)

[Prince 850 Ton Die Casting Machine - Cell #15](#)

[Cal-Miser SO-2600 Low Energy Aluminum Holding Furnace - Cell #15](#)

[Rimrock 305 Automatic ladle upgraded to Allen Bradley Controls by DieKast - Cell #15](#)

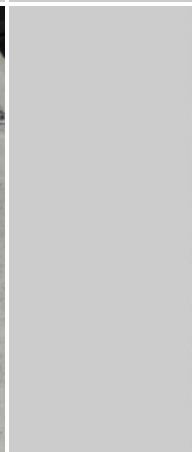
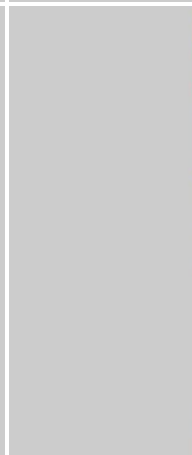
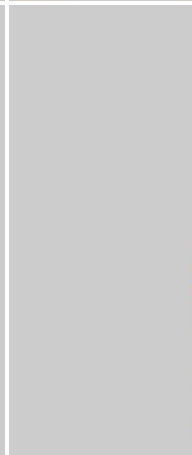
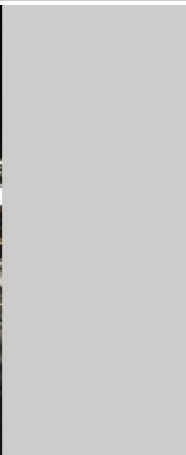
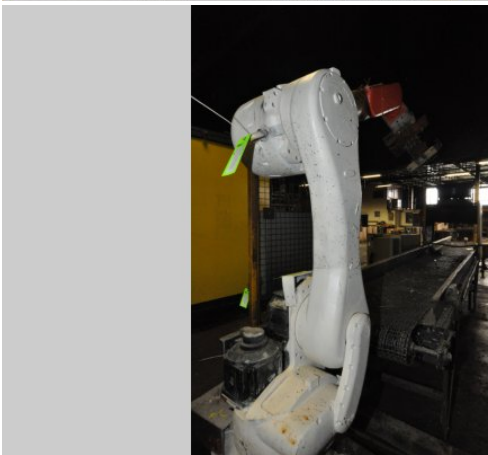
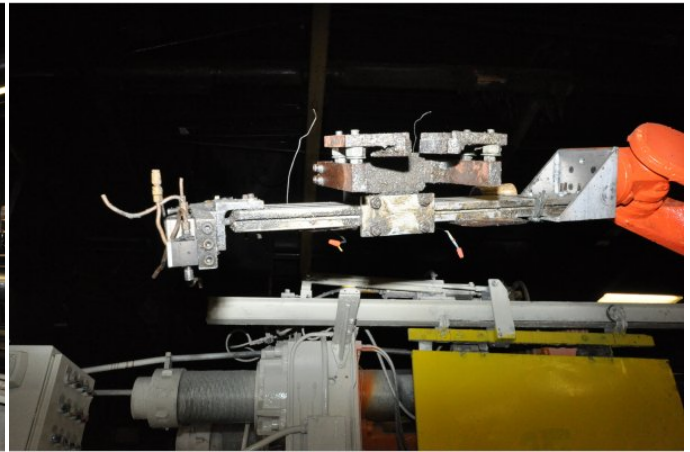
Terms of Sale:

Price: [request quotation](#)

Shipping Terms: Ex-works

Product Photos:

Click on any image for a larger view



Description: Used, Kawasaki Model RS-080N 80 Kilogram Six Axis Foundry Rated Industrial Robot For Sale, Features include: Compact Arm Design, Fast maneuverability, Heavy Payload Capability, Renowned Kawasaki Parts and Service, , , Controls, Second Hand, DCM-4797

PURCHASER'S (Buyer's) RESPONSIBILITY AND INDEMNITY: Used machines, equipment or any part thereof, may not incorporate approved activating mechanisms, operator safety devices or safety guards as required by OSHA or otherwise. It shall be a Purchaser's (Buyer's) responsibility to ensure that any and all merchandise or equipment purchased from Die Cast Machinery, LLC or its affiliates is installed and operated in a proper and safe manner. Purchaser (Buyer) also acknowledges that it may have to install or change guards, safeties, warnings or other components to ensure that the merchandise or machines purchased will conform to all laws, codes, regulations, ordinances, statutes, insurance requirements and industry standards. Purchaser agrees to defend, indemnify and hold harmless Die Cast Machinery, LLC from and against all suits, claims, costs, damages and expenses, including, but not limited to, reasonable attorneys' fees, arising out of, or in connection with, the transportation, purchase, ownership, or use of the merchandise or equipment sold hereunder. Information has been obtained from sources deemed reliable, buyers should avail themselves of the opportunity to inspect the items before purchase.