

Die Cast Machinery, LLC Inventory number ??: 5188

We offer for sale, subject to availability, prior sale and the terms listed below:

Used Lester Model: HP-600X-SF 600 Ton Horizontal Cold Chamber Aluminum High Pressure Die Casting Machine

Model: HP-600X-SF

Machine Purchase Includes Rimrock 410 Die Sprayer, Kawasaki UX120G six axis robot extractor and Cal-Miser SH 2700 aluminum holding furnace

Status: Available

Specifications:

Metric / U.S. Standard

Maximum Die Locking Pressure:	545 tons / 600 tons
Die Height Adjustment (with die spacer rings):	711 - 330 mm / 28 - 13 inches
Die Stroke (adjustable)	254 - 457 mm / 10 - 18 inches
Clearance between beams (Hor x Vert):	723 by 723 mm / 28.5 inches by 28.5 inches
Moving Platen Size (Hor x Vert):	1270 mm by 1206 mm / 40 inches by 47.5 inches
Ejector Cylinder Stroke (adjustable):	1016 by 723 mm / 0 - 3.5 inches
Ejector Cylinder Force:	0 - 88 mm / 24 tons
Shot Positions (inserted, adjustable):	21 tons / Center to -6 inches
Machine Controls:	Allen Bradley SLC 5/03 / Allen Bradley SLC 5/03
Main Motor Size:	30 KW / 40 HP
Approximate Machine Weight:	22,452 KG / 49,500 pounds

Features & Accessories:

Olmsted Prefill Shot Control System
T-Slotted Moving & Stationary Platens
Two Auxiliary Hydraulic Side Core Circuits
Trabon Pressurized Oil Type Central Lubrication System
Hydraulic Center Platen Ejection System
Air Safety Ratchet

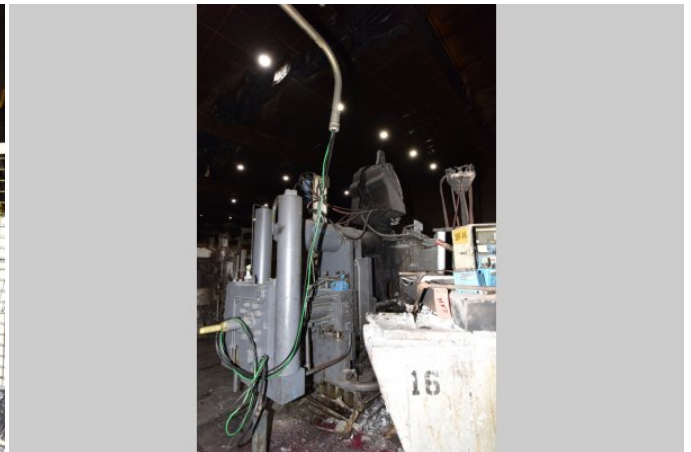
Terms of Sale:

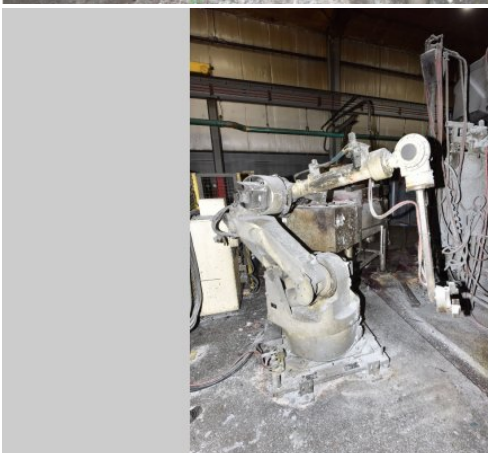
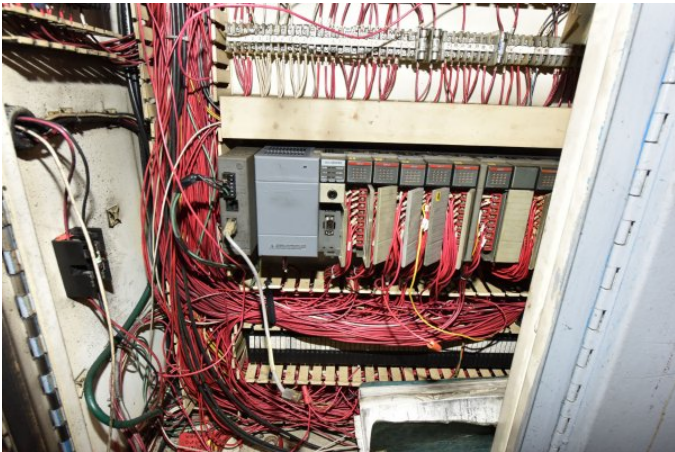
Price: [request quotation](#)

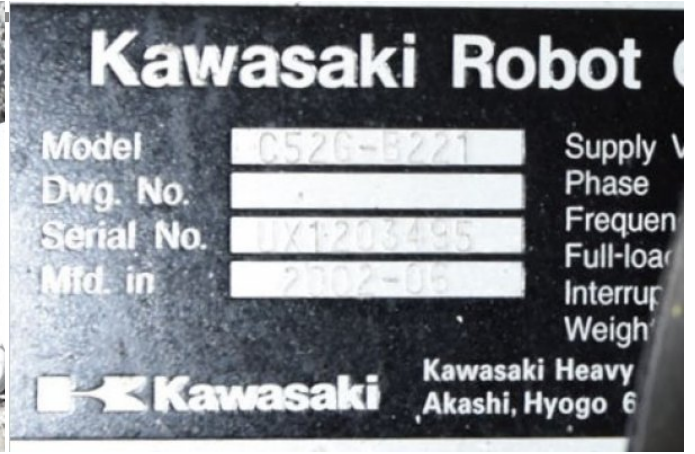
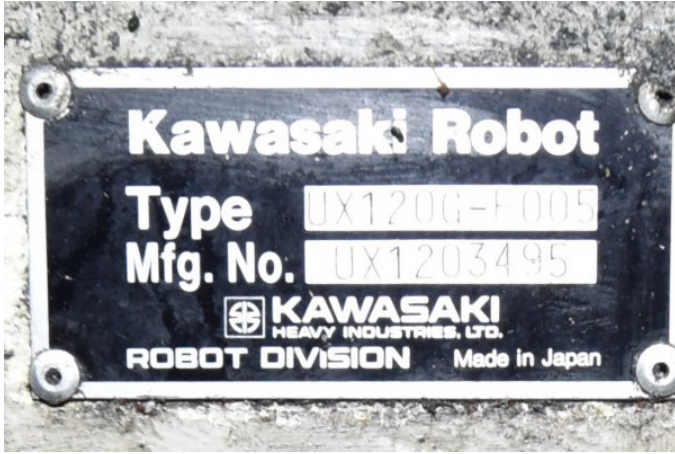
Shipping Terms: Ex-works

Product Photos:

Click on any image for a larger view







Description: Used, Lester Model HP-600X-SF 600 Ton Horizontal Cold Chamber Aluminum High Pressure Die Casting Machine For Sale, Features include: Olmsted Prefill Shot Control System, T-Slotted Moving & Stationary Platens, Two Auxiliary Hydraulic Side Core Circuits, Trabon Pressurized Oil Type Central Lubrication System, Hydraulic Center Platen Ejection System, Air Safety Ratchet, Allen Bradley SLC 5/03 Series Solid State Programmable Controls, Second Hand, DCM-5188

PURCHASER'S (Buyer's) RESPONSIBILITY AND INDEMNITY: Used machines, equipment or any part thereof, may not incorporate approved activating mechanisms, operator safety devices or safety guards as required by OSHA or otherwise. It shall be a Purchaser's (Buyer's) responsibility to ensure that any and all merchandise or equipment purchased from Die Cast Machinery, LLC or its affiliates is installed and operated in a proper and safe manner. Purchaser (Buyer) also acknowledges that it may have to install or change guards, safeties, warnings or other components to ensure that the merchandise or machines purchased will conform to all laws, codes, regulations, ordinances, statutes, insurance requirements and industry standards. Purchaser agrees to defend, indemnify and hold harmless Die Cast Machinery, LLC from and against all suits, claims, costs, damages and expenses, including, but not limited to, reasonable attorneys' fees, arising out of, or in connection with, the transportation, purchase, ownership, or use of the merchandise or equipment sold hereunder. Information has been obtained from sources deemed reliable, buyers should avail themselves of the opportunity to inspect the items before purchase.