

Die Cast Machinery, LLC Inventory number: 4829

We offer for sale, subject to prior sale and the terms listed below:

Used Metal Mechanics 35 U.S. Ton

Model: DCT-35

Premier Die Casting Company Press #14

**Status: Sold**

## **Specifications:**

## **Metric / U.S. Standard**

Model:	DCT-35 / DCT-35
Pressing Tonnage:	31.75 tons / 35 tons
Number of Columns:	4 / 4
Column Diameter:	76.2 mm / 3 inches
Daylight:	762 mm / 30 inches
Stroke:	406 mm / 16 inches
Shut Height:	355 mm / 14 inches
Clearance between Tie Bars (Left to Right):	1,016 mm / 40 inches
Clearance between Tie Bars (Front to Back):	673 mm / 26.5 inches
Bed Size (Left to Right by Front to Back):	1,270 x 939 mm / 50 x 37 inches
Cut out Size in Bed:	304 x 254 mm / 12 x 10 inches
Approximate Footprint (L/R x F/B):	1676.4 x 1422.4mm / 66 x 56 inches

## **Features & Accessories:**

- Dual Pull-Out Bar Operation
- T-Slotted Bed, Drilled & Tapped Moving Platen
- Allen Bradley SLC Controls
- Full Electrical and Hydraulic Documents including Schematics
- One (1) Auxiliary Side Core Punch
- Air Safety Ratchet

## **Optional Equipment Available with Machine at additional cost: (click on item to view)**

[Metal Mechanics 35 ton trim press](#)

[Metal Mechanics 35 ton trim press](#)

[Metal Mechanics 35 ton trim press](#)

[B&T Greenlee 28 Ton Vertical Hydraulic Trim Press](#)

[B&T Greenlee 20 Ton Vertical Hydraulic Trim Press](#)

[B&T Greenlee 28 Ton Vertical Hydraulic Trim Press](#)

## **Terms of Sale:**

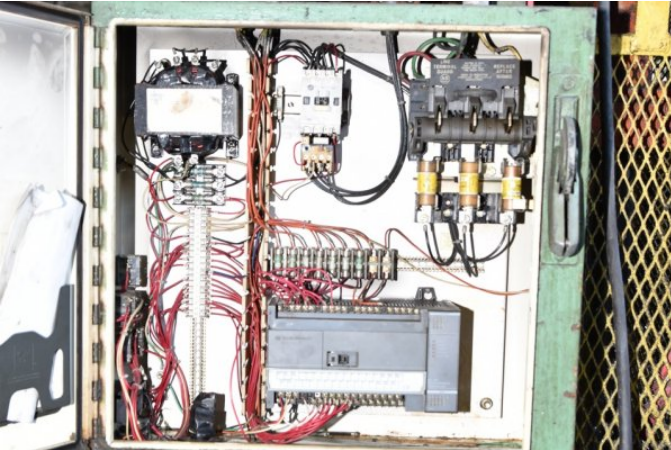
Price: **request quotation**

Shipping Terms: Ex-works

**Product Photos:**

*Click on any image for a larger view*





**METAL MECHANICS, INC.**  
Schoolcraft, Michigan  
Phone (516) 679-2125  
Fax (616) 679-2127

35	Date	6 97
48,0		2091
26		18
		12

**Description:** Used, Metal Mechanics Model DCT-35 35 U.S. Ton For Sale, Features include: Dual Pull-Out Bar Operation, T-Slotted Bed, Drilled & Tapped Moving Platen, Allen Bradley SLC Controls, Full Electrical and Hydraulic Documents including Schematics, One (1) Auxiliary Side Core Punch, Air Safety Ratchet, Allen Bradley Solid State Controls, Second Hand, DCM-4829

**PURCHASER'S (Buyer's) RESPONSIBILITY AND INDEMNITY:** Used machines, equipment or any part thereof, may not incorporate approved activating mechanisms, operator safety devices or safety guards as required by OSHA or otherwise. It shall be a Purchaser's (Buyer's) responsibility to ensure that any and all merchandise or equipment purchased from Die Cast Machinery, LLC or its affiliates is installed and operated in a proper and safe manner. Purchaser (Buyer) also acknowledges that it may have to install or change guards, safeties, warnings or other components to ensure that the merchandise or machines purchased will conform to all laws, codes, regulations, ordinances, statutes, insurance requirements and industry standards. Purchaser agrees to defend, indemnify and hold harmless Die Cast Machinery, LLC from and against all suits, claims, costs, damages and expenses, including, but not limited to, reasonable attorneys' fees, arising out of, or in connection with, the transportation, purchase, ownership, or use of the merchandise or equipment sold hereunder. Information has been obtained from sources deemed reliable, buyers should avail themselves of the opportunity to inspect the items before purchase.