



Die Cast Machinery, LLC Inventory number: 4143

We offer for sale, subject to prior sale and the terms listed below:

Used Modern Equipment 3000 Pounds/Hour Stack (tower/shaft) Type Stationary Aluminum Melting and Holding Furnace

Model: AL-3000 Jet Melter

Status: Sold

Specifications:	Metric / U.S. Standard
Melting Capacity (Aluminum):	1,360 KG per hour / 3,000 pounds per hour
Bath Capacity:	3,681 KG / 8,100 pounds
Maximum Bath Temperature:	760 C / 1400 F
Burner System:	2 Melting - 1 Holding / 2 Melting - 1 Holding
Type of Burner:	Medium Speed Gas Burner / Medium Speed Gas Burner
Fuel:	Natural Gas / Natural Gas
Total Burner Rating Melting Burners/Holding Burner:	2,520,000/1,080,000 BTU / 2,520,000/1,080,000 BTU
Ingot/Scrap Charging Unit:	yes / Yes
Ingot Carts	yes / Yes
Furnace Design:	Aluminum Stack Melting Furnace / Aluminum Stack Melting Furnace
Power Metal Tap & Flow Rate:	Yes/204 KG per minute / Yes/450 pounds per minute

Features & Accessories:

Equipped with Modern Equipment Company Ingot and Scrap Charging Elevator
Includes Ingot and scrap carts
High Efficiency Shaft Melting Furnace Design
High Melt Rate to Bath Size Ratio
Waste Gas Hood with Waste Gas Baffle
Very Low Dross Loss Rate

Optional Equipment Available with Machine at additional cost: (click on item to view)

[Modern Equipment Molten Metal Transfer Ladle](#)

[Modern Equipment Transfer Ladle Natural Gas Preheater](#)

[Thermtronix Rotary De-Gassing Unit](#)

[Modern Equipment AL-1500 Jet Melter 1,500 pound per hour melting furnace](#)

Terms of Sale:

Price: [request quotation](#)

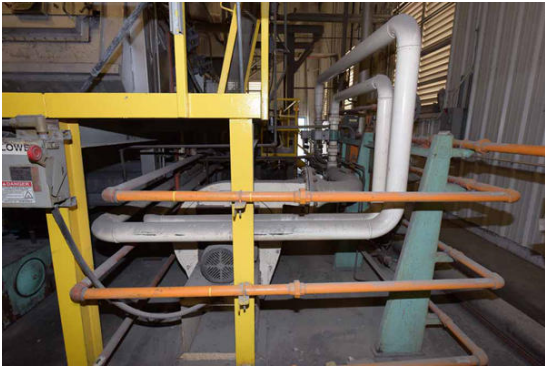
Shipping Terms: Ex-warehouse

Product Photos:

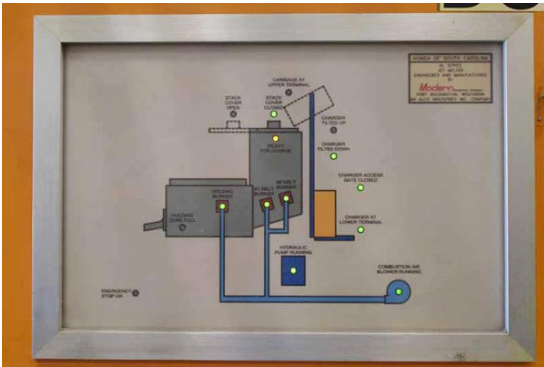
Click on any image for a larger view











MODERN EQUIPMENT COMPANY
MODEL # AL-3000
SERIAL # JM557
SUPPLY VOLTAGE 480VAC
PHASE 30 PH
FREQUENCY 60 HZ
FULL LOAD CURRENT 30A
LARGEST LOAD 12.5A
DRAWING # 5390-5157-2



Description: Used, Modern Equipment Model AL-3000 Jet Melter 3000 Pounds/Hour Stack (tower/shaft) Type Stationary Aluminum Melting and Holding Furnace For Sale, Features include: Equipped with Modern Equipment Company Ingot and Scrap Charging Elevator, Includes Ingot and scrap carts, High Efficiency Shaft Melting Furnace Design, High Melt Rate to Bath Size Ratio, Waste Gas Hood with Waste Gas Baffle, Very Low Dross Loss Rate, Allen Bradley SLC 5/04 Solid State Programmable Controls, Second Hand, DCM-4143

PURCHASER'S (Buyer's) RESPONSIBILITY AND INDEMNITY: Used machines, equipment or any part thereof, may not incorporate approved activating mechanisms, operator safety devices or safety guards as required by OSHA or otherwise. It shall be a Purchaser's (Buyer's) responsibility to ensure that any and all merchandise or equipment purchased from Die Cast Machinery, LLC or its affiliates is installed and operated in a proper and safe manner. Purchaser (Buyer) also acknowledges that it may have to install or change guards, safeties, warnings or other components to ensure that the merchandise or machines purchased will conform to all laws, codes, regulations, ordinances, statutes, insurance requirements and industry standards. Purchaser agrees to defend, indemnify and hold harmless Die Cast Machinery, LLC from and against all suits, claims, costs, damages and expenses, including, but not limited to, reasonable attorneys' fees, arising out of, or in connection with, the transportation, purchase, ownership, or use of the merchandise or equipment sold hereunder. Information has been obtained from sources deemed reliable, buyers should avail themselves of the opportunity to inspect the items before purchase.