



Die Cast Machinery, LLC Inventory number: 4055

We offer for sale, subject to prior sale and the terms listed below:

Used Prince 700 Ton Horizontal Cold Chamber Aluminum High Pressure Die Casting Machine

Model: 633 CCA

Status: Sold

Specifications:

Metric / U.S. Standard

Rated Tonnage:	636 tons / 700 tons
Tie Bar Diameter:	171 mm / 6.75 inches
Clearance between Tie Bars:	831 x 831 mm / 32.75 x 32.75 inches
Front Platen Size (T x W x H):	298 x 1384 x 1562 mm / 11.75 x 54 x 61.50 inches
Moving Platen Size (T x W x H):	273 x 1384 x 1384 mm / 10.75 x 54.50 x 54.50 inches
Die Thickness (minimum to maximum):	457 - 965 mm / 18 - 38 inches
Die Stroke:	508 mm / 20 inches
Shot Position Standard:	Center to 250 mm below / Center to 10 inches bellow
Shot Cylinder Stroke:	482 - 609 mm / 19 - 24 inches
Motor Size:	44.76 Kw / 60 HP
Machine Size (L x W x H):	7.92 x 2.44 x 3.05 meters / 26 x 8 x 10 feet
Machine Weight:	31,820 kg / 70,000 pounds

Features & Accessories:

C-Frame Shot End with Prince Binary II shot system with Prince Low-Impact System and Hydraulic Shot Position Adjustment

Allen Bradley PLC 5/30 Controls with Prince ProManager

Twin Cylinder Hydraulic Bumper Plate Ejection System

Fully Automatic Top Helper Side Tie Bar Pulling System

Hydraulic Motorized Die Height Adjustment System with Individual Tie Bar Adjustment System

Two (2) auxiliary hydraulic side core circuits one (1) on moving platen one (1) on stationary platen

Terms of Sale:

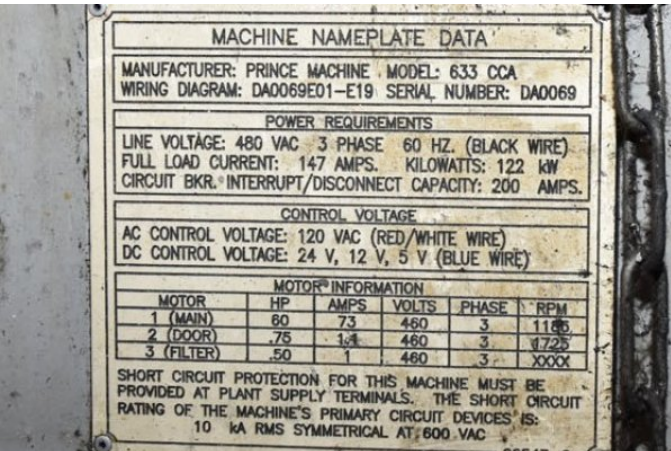
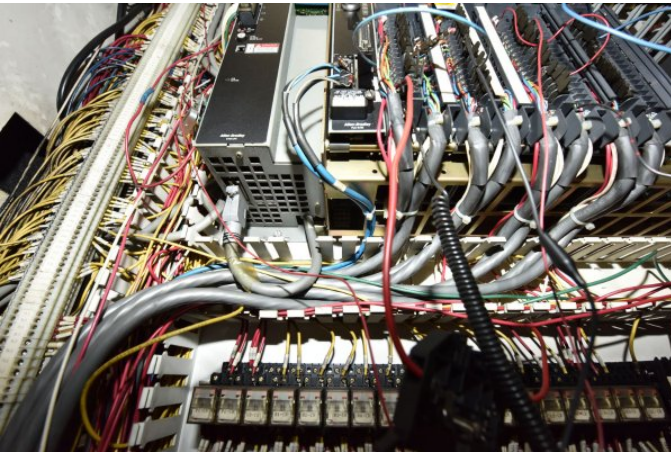
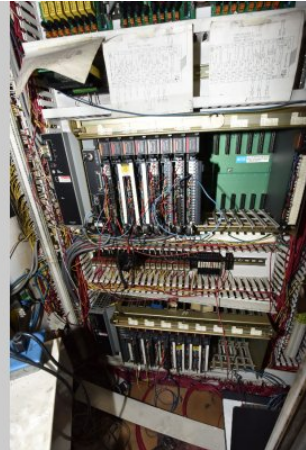
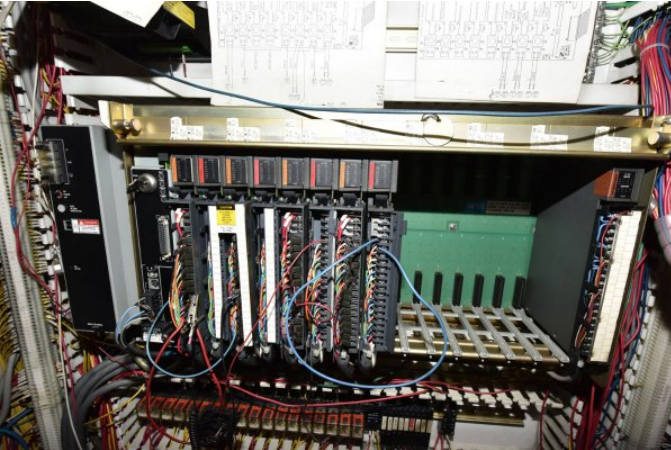
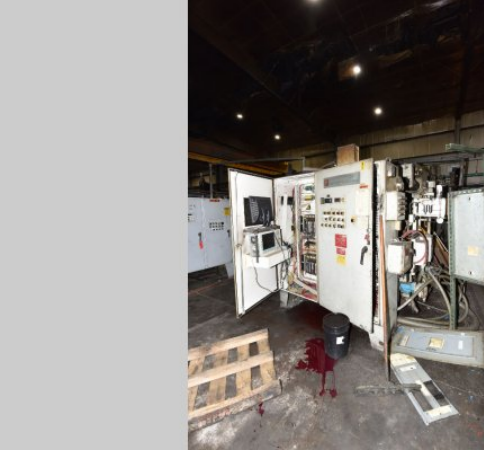
Price: [request quotation](#)

Shipping Terms: Ex-works

Product Photos:

Click on any image for a larger view





Description: Used, Prince Model 633 CCA 700 Ton Horizontal Cold Chamber Aluminum High Pressure Die Casting Machine For Sale, Features include: C-Frame Shot End with Prince Binary II shot system with Prince Low-Impact System and Hydraulic Shot Position Adjustment, Allen Bradley PLC 5/30 Controls with Prince ProManager , Twin Cylinder Hydraulic Bumper Plate Ejection System, Fully Automatic Top Helper Side Tie Bar Pulling System, Hydraulic Motorized Die Height Adjustment System with Individual Tie Bar Adjustment System, Two (2) auxiliary hydraulic side core circuits one (1) on moving platen one (1) on stationary platen, Allen Bradley PLC 5/30 with Prince ProManager Controls, Second Hand, DCM-4055

PURCHASER'S (Buyer's) RESPONSIBILITY AND INDEMNITY: Used machines, equipment or any part thereof, may not incorporate approved activating mechanisms, operator safety devices or safety guards as required by OSHA or otherwise. It shall be a Purchaser's (Buyer's) responsibility to ensure that any and all merchandise or equipment purchased from Die Cast Machinery, LLC or its affiliates is installed and operated in a proper and safe manner. Purchaser (Buyer) also acknowledges that it may have to install or change guards, safeties, warnings or other components to ensure that the merchandise or machines purchased will conform to all laws, codes, regulations, ordinances, statutes, insurance requirements and industry standards. Purchaser agrees to defend, indemnify and hold harmless Die Cast Machinery, LLC from and against all suits, claims, costs, damages and expenses, including, but not limited to, reasonable attorneys' fees, arising out of, or in connection with, the transportation, purchase, ownership, or use of the merchandise or equipment sold hereunder. Information has been obtained from sources deemed reliable, buyers should avail themselves of the opportunity to inspect the items before purchase.