



Die Cast Machinery, LLC Inventory number ??: 5630

We offer for sale, subject to availability, prior sale and the terms listed below:

Used Prince Model: 836 CCA 900 U.S. Tons Horizontal Cold Chamber Aluminum High Pressure Die Casting Machine

Model: 836 CCA

Visi-Trak Sure Shot Servo Shot Control System

Status: Available

Specifications:

Metric / U.S. Standard

Rated Tonnage:	816.5 tons / 900 tons
Tie Bar Diameter:	190.5 mm / 7.5 inches
Clearance Between Tie bars:	927.1 x 927.1 mm / 36.5 x 36.5 inches
Front Platen Size (T x W x H):	323.9 x 1524 x 1524 / 12.75 x 60 x 70 inches
Moving Platen Size (T x W x H):	298.5 x 1524 x 1524 / 11.75 x 60 x 60 inches
Die Thickness (min. - max.):	508 - 1016 mm / 20 - 40 inches
Die Stroke:	558.8 mm / 22 inches
Ejection Stroke:	152.4 / 6 inches
Injection Cylinder Bore/Stroke:	203.2 mm x 762 mm / 8 x 30 inches
Motor Size:	55.16 kw / 75 HP
Machine Size (L x W x H):	8.5 x 2.4 x 3.4 meters / 28 x 8 x 11 feet

Features & Accessories:

Equipped with Visi-Trak Sure Shot Closed Loop Shot Control System

Allen Bradley SLC 5/04 Programmable Controller

Twin Cylinder Hydraulic Bumper Plate Ejection System

Fully Automatic Top Helper Side Tie Bar Pulling System

Hydraulic Motorized Die Height Adjustment System with Individual Tie Bar Tonnage Adjustment System

Two (2) auxiliary hydraulic side core circuits one (1) on moving platen one (1) on stationary platen, Hydraulic Shot Position Adjustment

Terms of Sale:

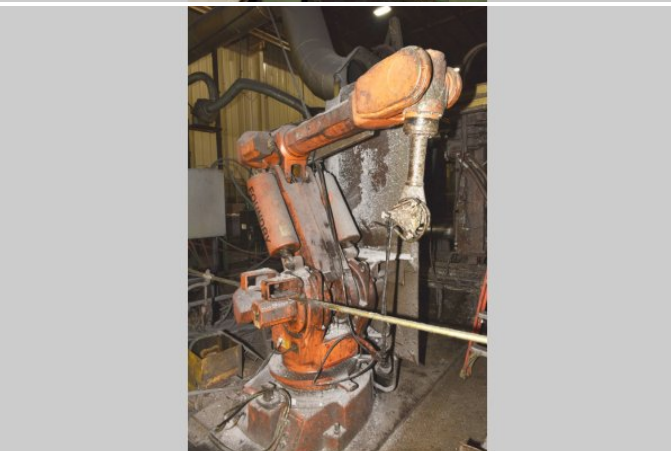
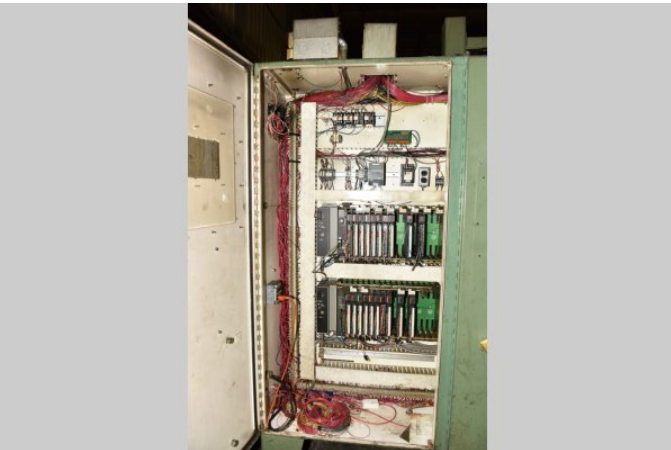
Price: [request quotation](#)

Shipping Terms: Ex-works

Product Photos:

Click on any image for a larger view







Description: Used, Prince Model 836 CCA 900 U.S. Tons Horizontal Cold Chamber Aluminum High Pressure Die Casting Machine For Sale, Features include: Equipped with Visi-Trak Sure Shot Closed Loop Shot Control System , Allen Bradley SLC 5/04 Programmable Controller, Twin Cylinder Hydraulic Bumper Plate Ejection System, Fully Automatic Top Helper Side Tie Bar Pulling System, Hydraulic Motorized Die Height Adjustment System with Individual Tie Bar Tonnage Adjustment System, Two (2) auxiliary hydraulic side core circuits one (1) on moving platen one (1) on stationary platen, Hydraulic Shot Position Adjustment , Allen Bradley PLC 5/30 Controls, Second Hand, DCM-5630

PURCHASER'S (Buyer's) RESPONSIBILITY AND INDEMNITY: Used machines, equipment or any part thereof, may not incorporate approved activating mechanisms, operator safety devices or safety guards as required by OSHA or otherwise. It shall be a Purchaser's (Buyer's) responsibility to ensure that any and all merchandise or equipment purchased from Die Cast Machinery, LLC or its affiliates is installed and operated in a proper and safe manner. Purchaser (Buyer) also acknowledges that it may have to install or change guards, safeties, warnings or other components to ensure that the merchandise or machines purchased will conform to all laws, codes, regulations, ordinances, statutes, insurance requirements and industry standards. Purchaser agrees to defend, indemnify and hold harmless Die Cast Machinery, LLC from and against all suits, claims, costs, damages and expenses, including, but not limited to, reasonable attorneys' fees, arising out of, or in connection with, the transportation, purchase, ownership, or use of the merchandise or equipment sold hereunder. Information has been obtained from sources deemed reliable, buyers should avail themselves of the opportunity to inspect the items before purchase.