



Die Cast Machinery, LLC Inventory number: 4059

We offer for sale, subject to prior sale and the terms listed below:

Used Remu SPA 1800 Metric Ton Horizontal Cold Chamber Aluminum High Pressure Die Casting Machine

Model: DCM-1800

Status: **Available**

| <b>Specifications:</b>              | <b>Metric / U.S. Standard</b>                       |
|-------------------------------------|---|
| Clamping Force:                     | 1,800 Metric Ton / 1,980 Tons                       |
| Tie Bar Diameter:                   | 290 mm / 11.41 inches                               |
| Clearance between tie bars (H x V): | 1,220 x 1230 mm / 48.030 x 48.425 inches            |
| Moving Platen Stroke (maximum):     | 1050 mm / 41.33 inches                              |
| Injection Positions:                | Inserted, multi-position / Inserted, multi-position |
| Machine Controls:                   | Viper/S7 Compatible / Viper/S7 Compatible           |
| Machine Dimensions:                 | 12.7 x 4.0 x 4.40 meters / 41.7 x 13.2 x 14.5 feet  |
| Machine Weight                      | 110,000 kg / 242,000 pounds                         |

### **Features & Accessories:**

Fully Rebuilt and Update in 2012 with CE Certification - Full Documentation Available

PLC Vipa/Siemens S-7 Compatible

Automatic Tie Bar Puller of Top Operator Tie Bar, Twin Cylinder Hydraulic Bumper Plate Ejection

Central Motorized Die Height Adjustment System

Six (6) Auxiliary Hydraulic Side Core Circuits - Four (4) on Moving Platen, Two (2) on Fixed Platen

Also including Fergal 2,000 KG (4,400 pound) Aluminum Melting/Holding Furnace, Automatic Ladle, Dual Zone 48 KW Hot Oil Unit, Package Cooling Tower, Die Lube Mixer and ABB Robot for Extracting

### **Terms of Sale:**

Price: [request quotation](#)

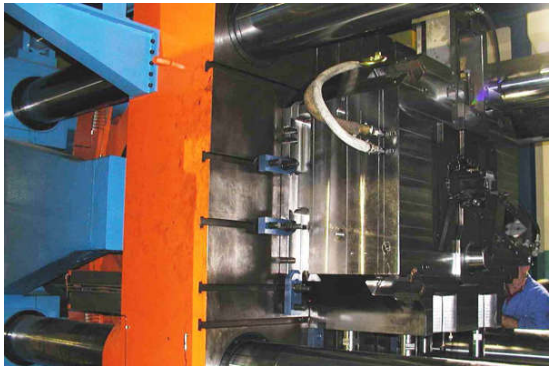
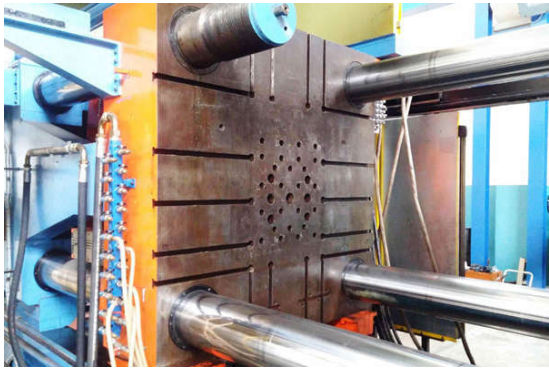
Shipping Terms: Ex-works

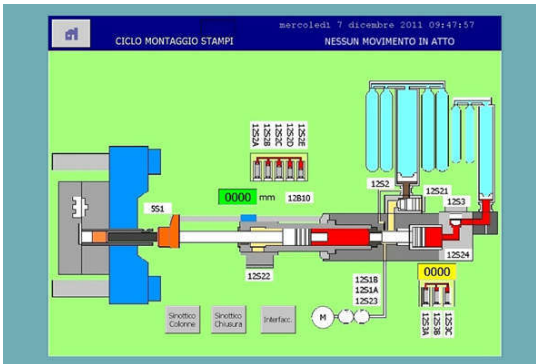
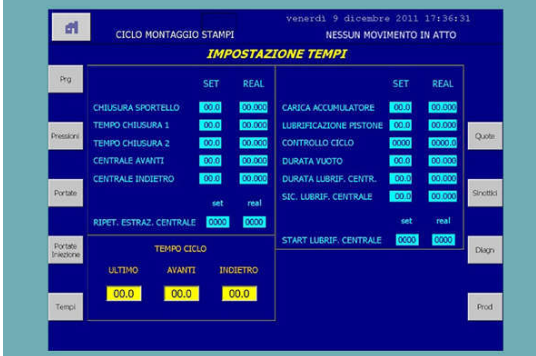
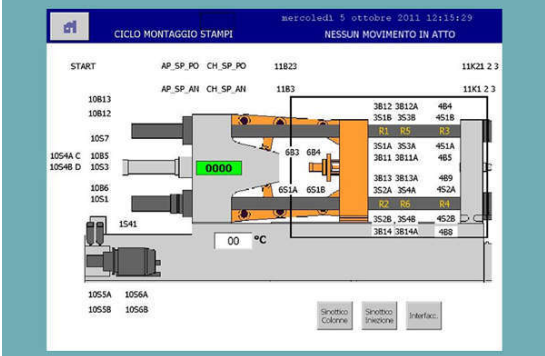
**Product Photos:**

*Click on any image for a larger view*









**Description:** Used, Remu SPA Model DCM-1800 1800 Metric Ton Horizontal Cold Chamber Aluminum High Pressure Die Casting Machine For Sale, Features include: Fully Rebuilt and Update in 2012 with CE Certification - Full Documentation Available, PLC Vipa/Siemens S-7 Compatible, Automatic Tie Bar Puller of Top Operator Tie Bar, Twin Cylinder Hydraulic Bumper Plate Ejection, Central Motorized Die Height Adjustment System, Six (6) Auxiliary Hydraulic Side Core Circuits - Four (4) on Moving Platen, Two (2) on Fixed Platen, Also including Fergal 2,000 KG (4,400 pound) Aluminum Melting/Holding Furnace, Automatic Ladle, Dual Zone 48 KW Hot Oil Unit, Package Cooling Tower, Die Lube Mixer and ABB Robot for Extracting, Viper/Siemens S-7 Compatible with 15 inch Touch-Screen HMI Controls, Second Hand, DCM-4059

**PURCHASER'S (Buyer's) RESPONSIBILITY AND INDEMNITY:** Used machines, equipment or any part thereof, may not incorporate approved activating mechanisms, operator safety devices or safety guards as required by OSHA or otherwise. It shall be a Purchaser's (Buyer's) responsibility to ensure that any and all merchandise or equipment purchased from Die Cast Machinery, LLC or its affiliates is installed and operated in a proper and safe manner. Purchaser (Buyer) also acknowledges that it may have to install or change guards, safeties, warnings or other components to ensure that the merchandise or machines purchased will conform to all laws, codes, regulations, ordinances, statutes, insurance requirements and industry standards. Purchaser agrees to defend, indemnify and hold harmless Die Cast Machinery, LLC from and against all suits, claims, costs, damages and expenses, including, but not limited to, reasonable attorneys' fees, arising out of, or in connection with, the transportation, purchase, ownership, or use of the merchandise or equipment sold hereunder. Information has been obtained from sources deemed reliable, buyers should avail themselves of the opportunity to inspect the items before purchase.