



Die Cast Machinery, LLC Inventory number ??: 5594

We offer for sale, subject to availability, prior sale and the terms listed below:

Used Thermtronix Model: GS-700 350 Pound Per Hour Melt Capacity in Aluminum Natural Gas Heated Silicon Carbide Crucible Type Aluminum Melting-Holding Furnace

Model: GS-700

**Status: Sold**

### **Specifications:**

### **Metric / U.S. Standard**

Melting Rate - Batch Melt - Covered Lid:	158 Kg Per Hour - Aluminum / 350 pounds per hour Aluminum
Melting Rate - Open Lid Operation	108 Kg Per Hour - Aluminum / 240 pound per hour
Bath Capacity:	317 Kg Aluminum / 700 pounds Aluminum
Heating Source:	Natural Gas / Natural Gas
Furnace Design:	Silcon Carbide Crucible / Silcon Carbide Crucible
Operating Temperature:	704 degrees Celsius / 1,300 degrees Fahrenheit
Burner Size BTU & Cubic Feet per Hour	1,000,000 BTU - 28.3 Cubic Meters/Hour / 1,000,000 BTU - 1,000 CFH
Overall Size (L x W x H):	2,336 x 2,489 x 2,743 mm / 92 x 98 x 108 inches (height includes stack)
Power Requirements:	480/3/60 / 480/3/60
Power Lid to cover Crucible:	Yes / Yes

### **Features & Accessories:**

Uses Silicon Carbide Crucibles For Aluminum Alloys

Crucible Design Allows for Quick Change-Over from One Alloy to the Next

Power-Lid to Cover Furnace Bath/Crucible - Saves Energy during Aluminum Melting and Holding Operations

Compact Furnace Design - High Melt Rate vs Size of Furnace

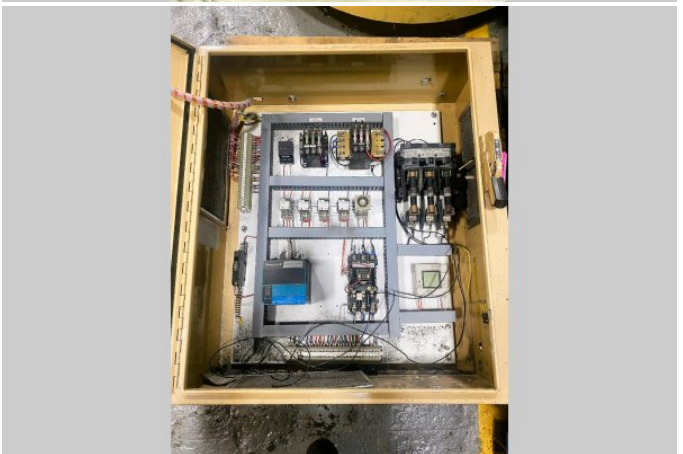
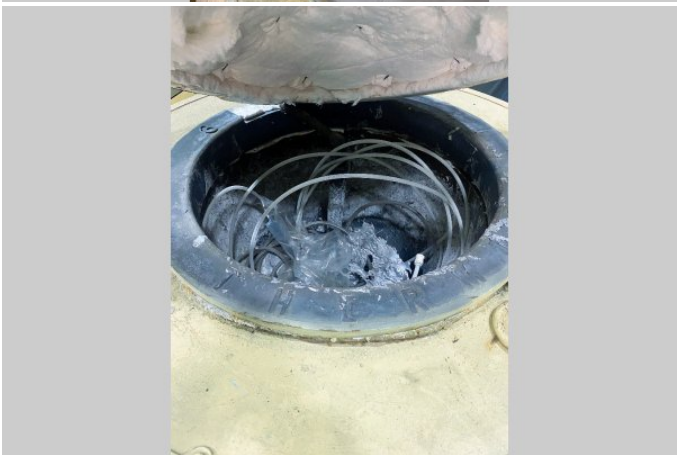
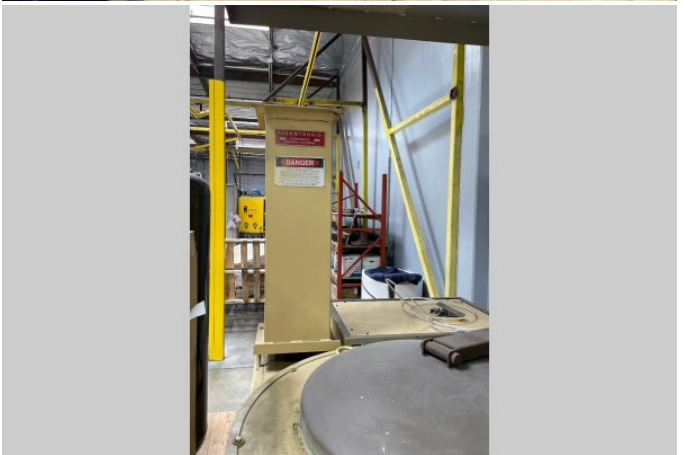
### **Terms of Sale:**

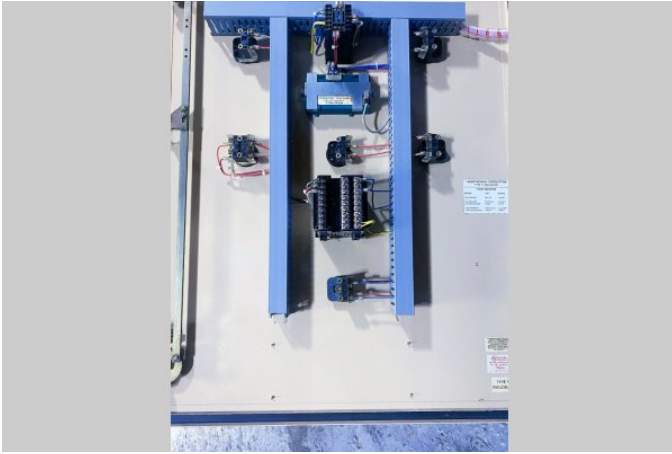
Price: [request quotation](#)

Shipping Terms: Ex-works

**Product Photos:**

*Click on any image for a larger view*





**Description:** Used, Thermtronix Model GS-700 350 Pound Per Hour Melt Capacity in Aluminum Natural Gas Heated Silicon Carbide Crucible Type Aluminum Melting-Holding Furnace For Sale, Features include: Uses Silicon Carbide Crucibles For Aluminum Alloys, Crucible Design Allows for Quick Change-Over from One Alloy to the Next, Power-Lid to Cover Furnace Bath/Crucible - Saves Energy during Aluminum Melting and Holding Operations, Compact Furnace Design - High Melt Rate vs Size of Furnace, , Thermtronix Solid State Controller Controls, Second Hand, DCM-5594

**PURCHASER'S (Buyer's) RESPONSIBILITY AND INDEMNITY:** Used machines, equipment or any part thereof, may not incorporate approved activating mechanisms, operator safety devices or safety guards as required by OSHA or otherwise. It shall be a Purchaser's (Buyer's) responsibility to ensure that any and all merchandise or equipment purchased from Die Cast Machinery, LLC or its affiliates is installed and operated in a proper and safe manner. Purchaser (Buyer) also acknowledges that it may have to install or change guards, safeties, warnings or other components to ensure that the merchandise or machines purchased will conform to all laws, codes, regulations, ordinances, statutes, insurance requirements and industry standards. Purchaser agrees to defend, indemnify and hold harmless Die Cast Machinery, LLC from and against all suits, claims, costs, damages and expenses, including, but not limited to, reasonable attorneys' fees, arising out of, or in connection with, the transportation, purchase, ownership, or use of the merchandise or equipment sold hereunder. Information has been obtained from sources deemed reliable, buyers should avail themselves of the opportunity to inspect the items before purchase.