



Die Cast Machinery, LLC Inventory number: 4072

We offer for sale, subject to prior sale and the terms listed below:

Used Toshiba 350 Metric Ton Horizontal Cold Chamber Aluminum High Pressure Die Casting Machine

Model: DC350 CL-T

Status: **Available**

<b>Specifications:</b>	<b>Metric / U.S. Standard</b>
Locking Force:	350 tons / 385 tons
Platen Size:	935 x 935 mm / 36.81 x 36.81 inches
Tie Bar Diameter:	125 mm / 4.92 inches
Clearance Between Tie Bars (V x H):	650 x 650 mm / 25.59 x 25.59 inches
Die Thickness (max - min):	700 - 300 mm / 27.56 - 11.81 inches
Die Stroke:	420 mm / 16.54 inches
Injection Stroke:	480 mm / 18.9 inches
Injection Positions:	0 and -125 mm / 0 and -4.92 inches
Ejection Stroke:	20 - 90 mm / .79 - 3.54 inches
Main Motors:	22 kw / 16.4 hp
Machine Weight:	11,700 kg / 25,794 pounds

#### **Features & Accessories:**

With Olmsted servo valve controlled by VisiTrak control system

Toshiba Die Sprayer

Toshiba Auto Ladle

Automatic Top Operator Tie Bar Puller

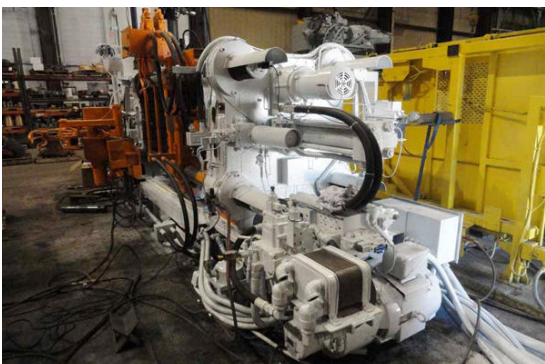
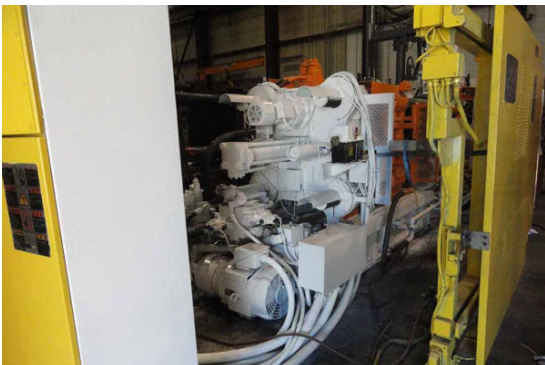
#### **Terms of Sale:**

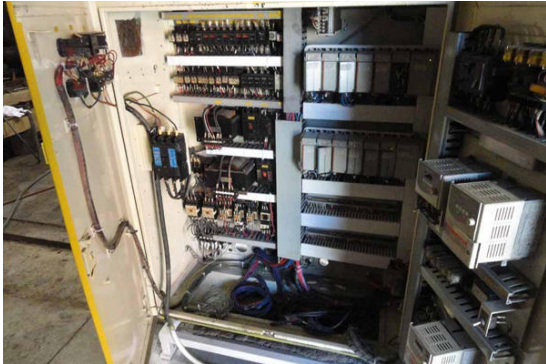
Price: [request quotation](#)

Shipping Terms: Ex-works

**Product Photos:**

*Click on any image for a larger view*







**Description:** Used, Toshiba Model DC350 CL-T 350 Metric Ton Horizontal Cold Chamber Aluminum High Pressure Die Casting Machine For Sale, Features include: With Olmsted servo valve controlled by VisiTrak control system, Toshiba Die Sprayer, Toshiba Auto Ladle, Automatic Top Operator Tie Bar Puller, , , Allen Bradley Compact Logix Controls, Second Hand, DCM-4072

**PURCHASER'S (Buyer's) RESPONSIBILITY AND INDEMNITY:** Used machines, equipment or any part thereof, may not incorporate approved activating mechanisms, operator safety devices or safety guards as required by OSHA or otherwise. It shall be a Purchaser's (Buyer's) responsibility to ensure that any and all merchandise or equipment purchased from Die Cast Machinery, LLC or its affiliates is installed and operated in a proper and safe manner. Purchaser (Buyer) also acknowledges that it may have to install or change guards, safeties, warnings or other components to ensure that the merchandise or machines purchased will conform to all laws, codes, regulations, ordinances, statutes, insurance requirements and industry standards. Purchaser agrees to defend, indemnify and hold harmless Die Cast Machinery, LLC from and against all suits, claims, costs, damages and expenses, including, but not limited to, reasonable attorneys' fees, arising out of, or in connection with, the transportation, purchase, ownership, or use of the merchandise or equipment sold hereunder. Information has been obtained from sources deemed reliable, buyers should avail themselves of the opportunity to inspect the items before purchase.